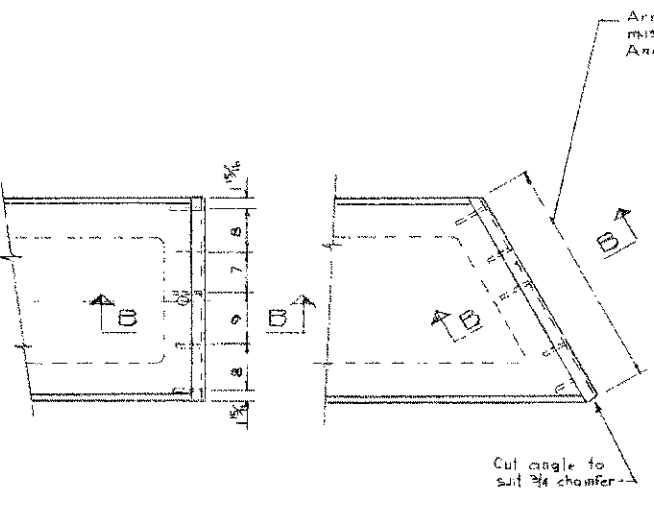
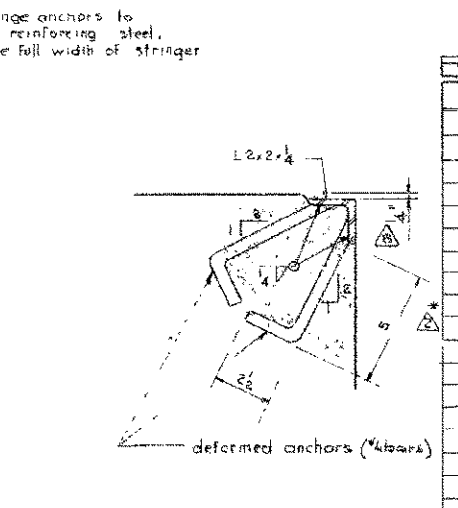


PLAN VIEW
Scale 3/4" = 1'-0"

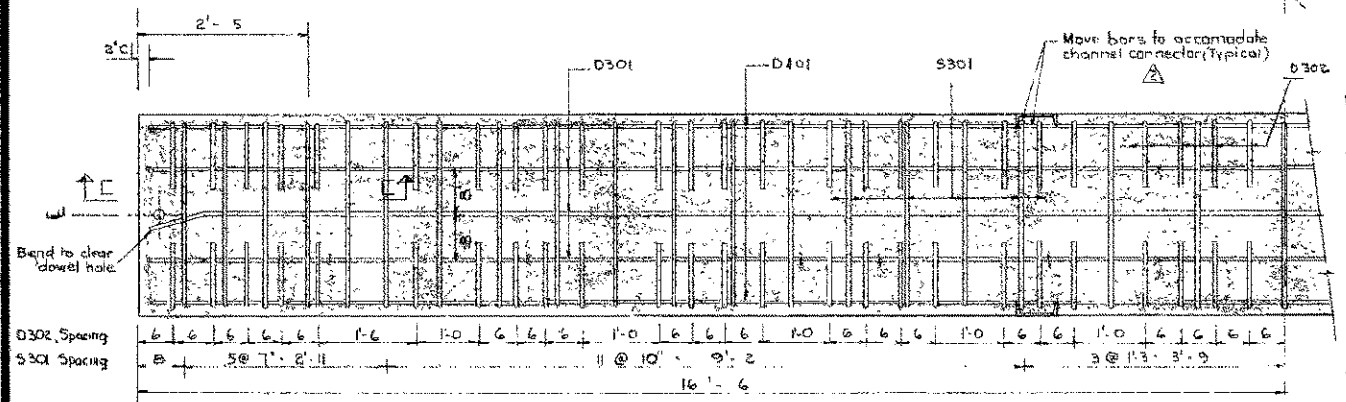


PROTECTION ANGLES
Scale 3/4" = 1'-0"

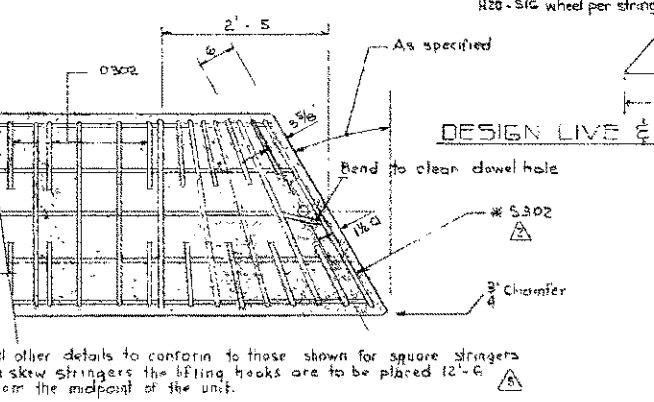


SECTION B-B
Scale 3" = 1'-0"

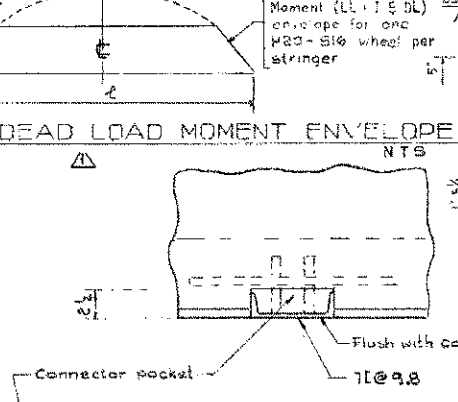
BAR LIST						
MARK	SIZE	NO	TYPE	X	LENGTH	WEIGHT
D301	3	3	Str		32'-8"	57
D302	3	100	A		1'-8"	53
S301	3	39	B		3'-4"	137
D401	4	2	Str		32'-8"	44
D501	5	33	Str		2'-8"	92
G1001	10	2	Str		28'-0"	241
G1002	10	2	Str		32'-0"	275
G1003	10	2	D		34'-1"	293
S302	3	2	E	Varies		
G301	3	4	C		3'-4"	5
D303	3	32	Str		2'-8"	32
Total weight						1209



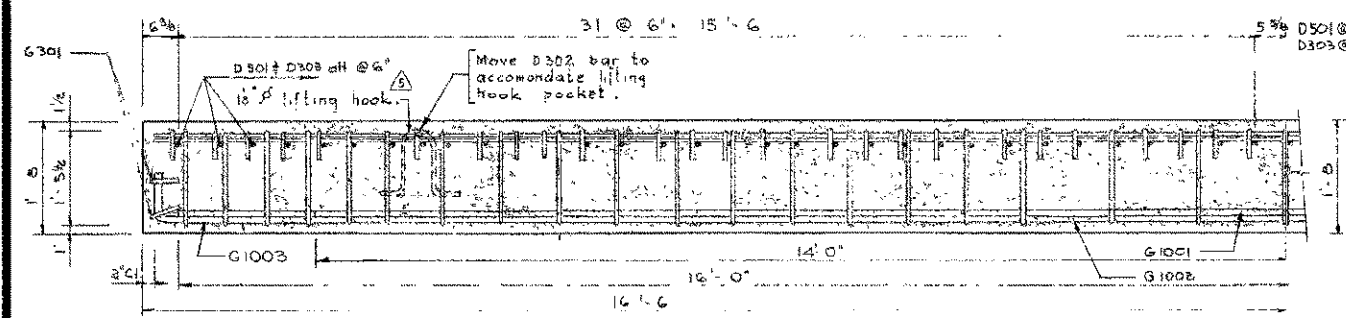
REINFORCEMENT PLAN
Scale 3/4" = 1'-0"



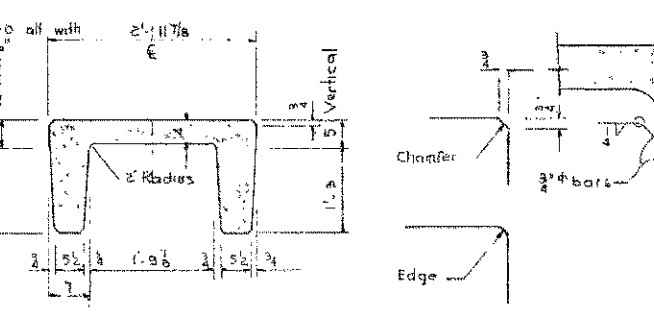
SKEW STRINGER
Scale 3/4" = 1'-0"



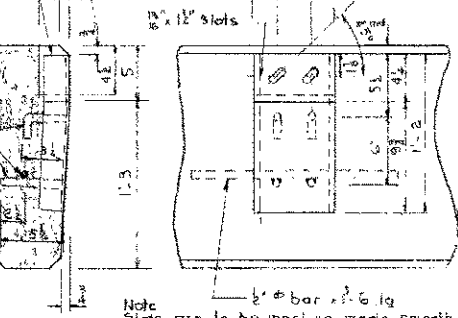
DESIGN LIVE & DEAD LOAD MOMENT ENVELOPE



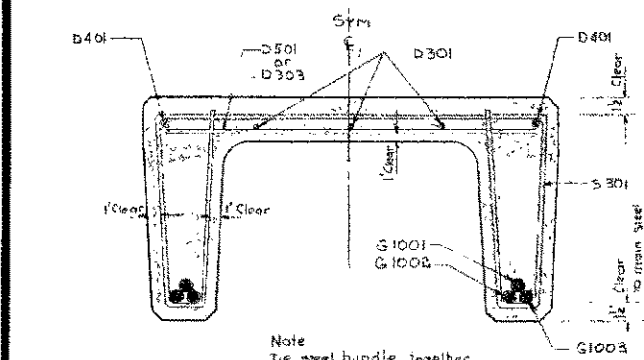
REINFORCEMENT ELEVATION
Scale 3/4" = 1'-0"



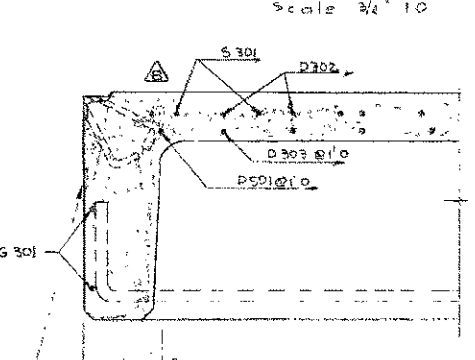
SECTION A-A
Scale 3/4" = 1'-0"



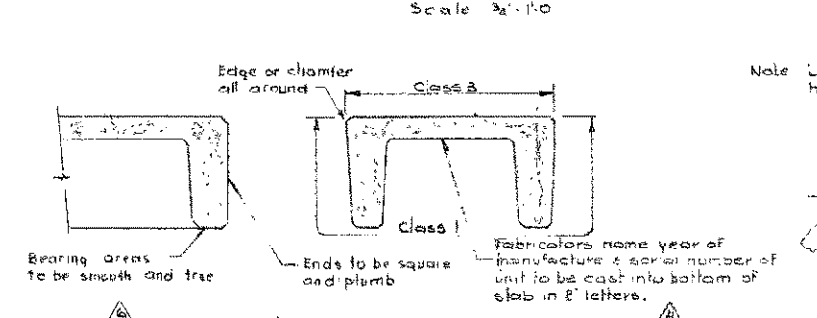
STRINGER CONNECTORS
Scale 1 1/2" = 1'-0"



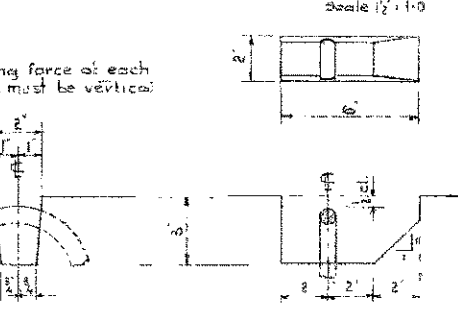
SECTION A-A
Scale 1 1/2" = 1'-0"



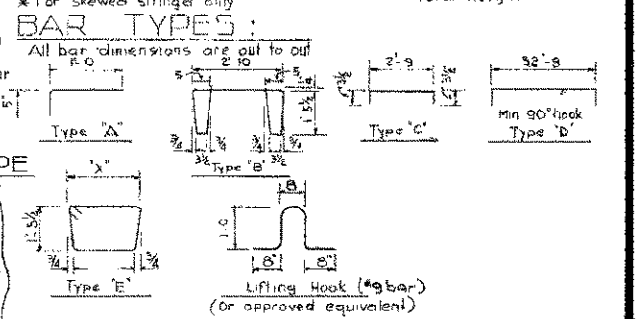
SECTION C-C
Scale 1 1/2" = 1'-0"



STRINGER FINISHES
Scale 3/4" = 1'-0"



LIFTING HOOK POCKET
Scale 1 1/2" = 1'-0"



GENERAL NOTES
DESIGN
Live Load - A.A.S.H.O. H20 - S16 modified as shown.
Dead Load - includes allowance for 2" wearing surface.
Concrete - to be standard weight aggregates with maximum aggregate size of 1/2" inch. Minimum 28 day compressive strength to be 4000 p.s.i.
CONSTRUCTION
Entrained Air shall be not less than 5%.
Diameters of all bends shall conform to the recommended minimums and all hooks, unless otherwise noted shall conform to the recommended sizes detailed in the A.C.I. Manual of Standard Practice for Detailing Reinforced Concrete Structures.
Each stringer shall have a cast chamfer of 3/4" inch.
All acute angles on skewed stringers shall have 1/2" inch chamfer.
Concrete shall attain at least 30% of the specified 28 day compressive strength before the units are stripped from the forms or lifted.
Each connector is to be 3/4" dia. one 3/8" x 2" F.T. bolt, one heavy hex small finished nut and three hardened washers. (Supplied by Dept.)
Units are to conform to the requirements of the Alberta Government Specification for the Manufacture of Precast Concrete Bridge Units.
ERECTOR
Any free space between the connectors shall be filled with washers.

SUPERSEDED

PRECAST CONCRETE
33 FT. SPAN TYPE "HC"
INTERIOR STRINGER

GOVERNMENT OF THE PROVINCE OF ALBERTA
DEPARTMENT OF HIGHWAYS
BRIDGE BRANCH, EDMONTON

FILE NO. _____ HWY. NO. _____
LOCATION SCALE: as shown DWG. NO. 5-784
STREAM SHEET OF _____

No	Date	Description	By
1	Jan. 1966	Buffer angle lowered	L.K.
2	March 1964	Entrained air	R.Ch

No.	DATE	DESCRIPTION	BY
1	Sept 16/63	General notes & finishes	R.E.
2	June 26/63	Moved Lifting Hook	B.W.S.
3	Jan. 29/63	General notes revised	R.E.
4	Sept 26/62	H.T. bolt note added	R.E.
5	Sept. 20/62	Connector clearance	L.K.
6	Aug. 28/62	General revision	L.K.

DESIGNED BY: _____
DATE: May 16 62
CHECKED BY: _____
DATE: May 16 62
REVISIONS: _____
DATE: _____