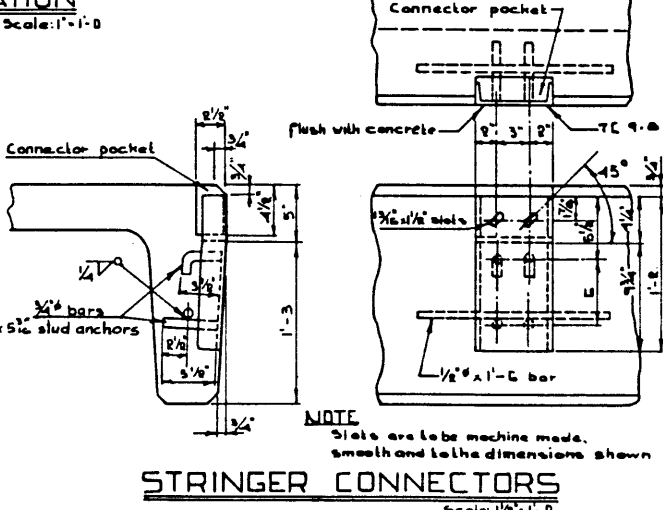
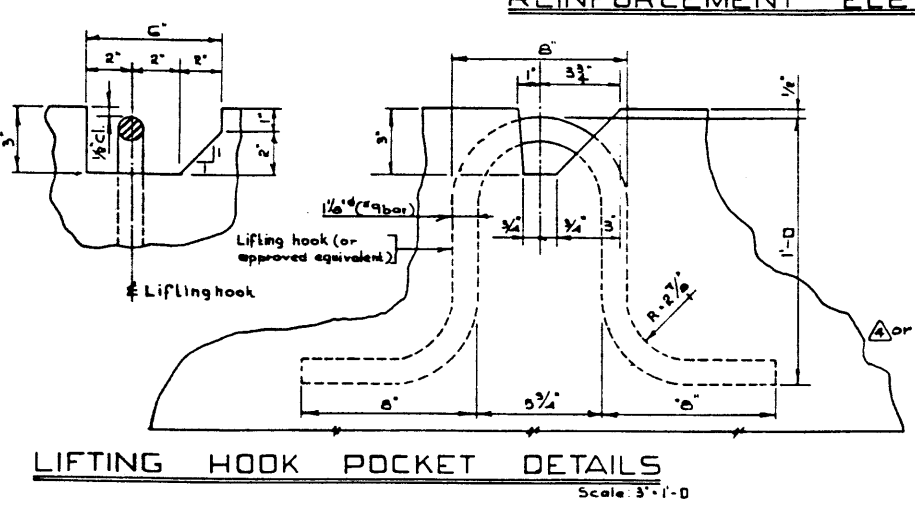
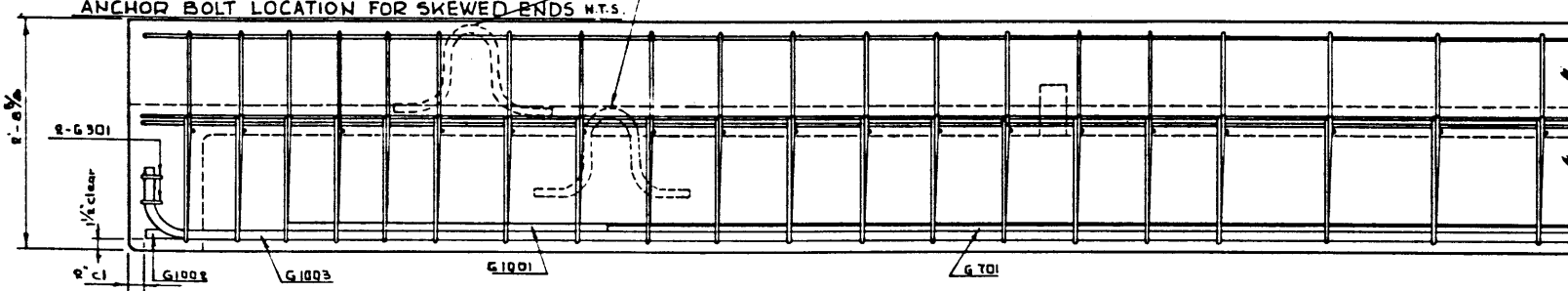
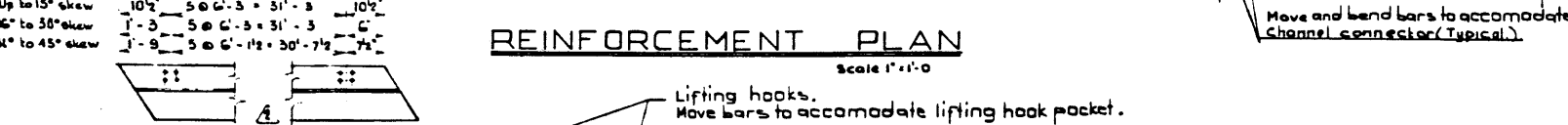
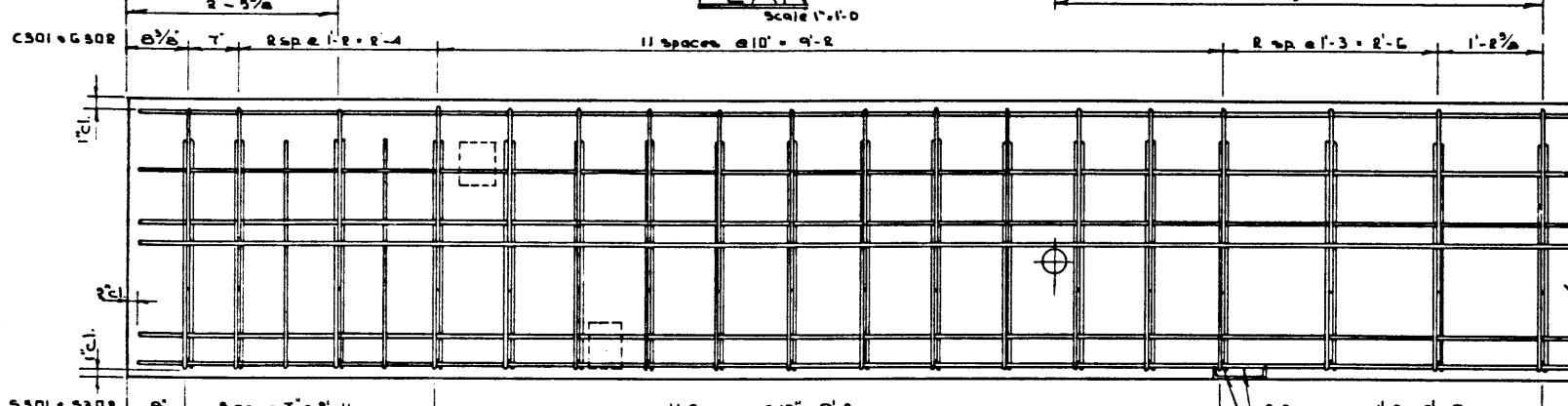
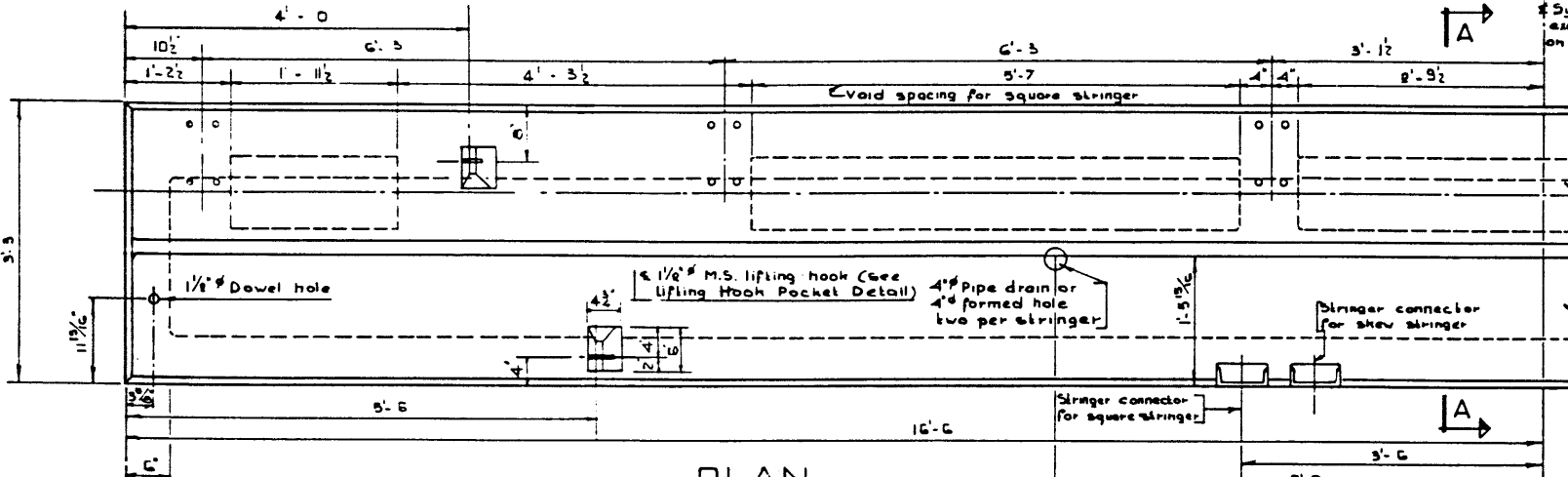
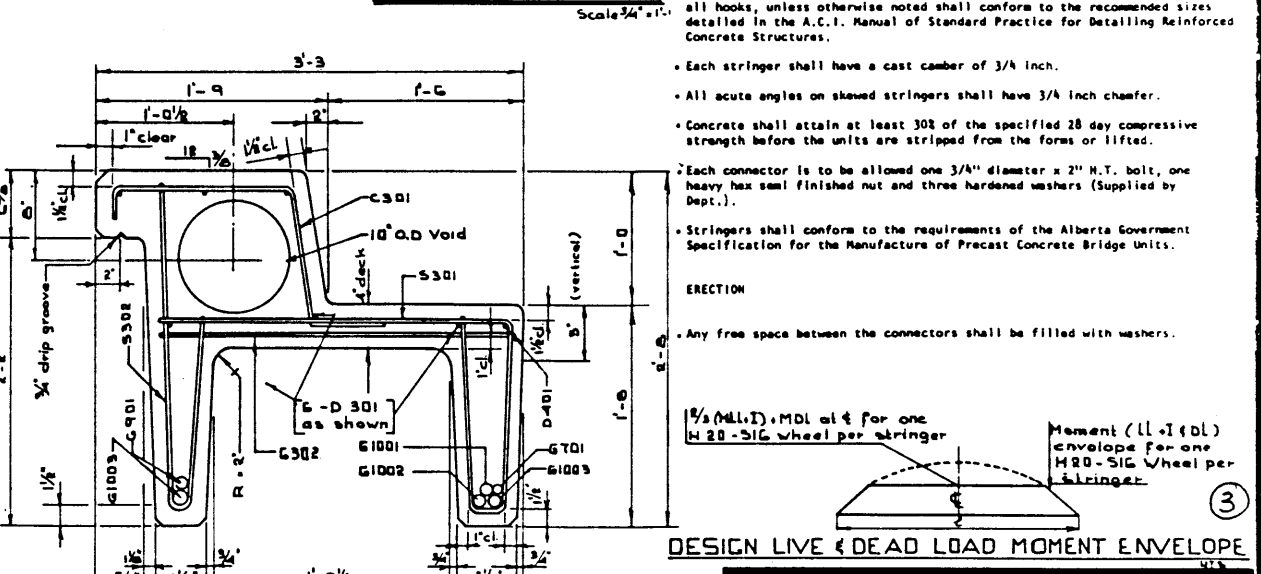
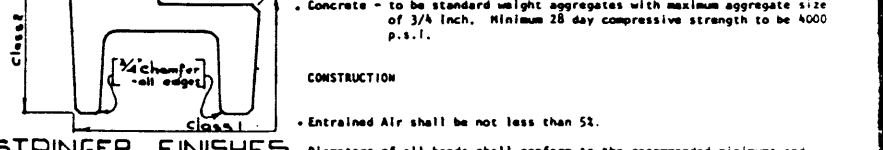
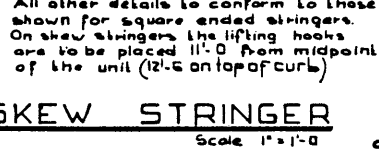
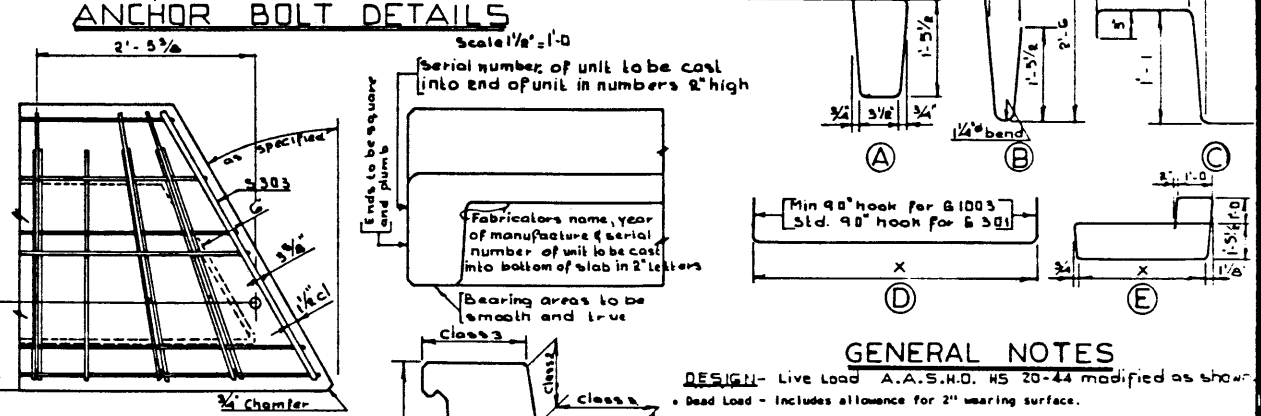


DESIGNED BY R.E. Boller 19CR
DATE May 1968
CHECKED BY D.H. Quapp 19CR
DATE June 1968
DATE May 1968



Mark	SIZE	No	Type	X	Length	Weight
C301	3	35	C		3'-3"	43
D301	3	6	Str		32'-8"	74
D401	4	1	Str		32'-8"	22
G301	3	4	D	2'-7"	3'-6"	5
G302	3	35	Str		2'-8"	35
G701	7	1	Str		22'-6"	46
G901	9	1	Str		29'-6"	100
G1001	10	1	Str		30'-0"	129
G1002	10	1	Str		32'-8"	141
G1003	10	2	D	32'-8"	34'-1"	293
5301	3	39	A		6'-0"	88
5302	3	39	B		4'-1"	60
5303	3	2	E		Skew ends only	



DESIGN LIVE & DEAD LOAD MOMENT ENVELOPE

PRECAST CONCRETE
33FT. SPAN TYPE 'HC'
CURB STRINGER

GOVERNMENT OF THE PROVINCE OF ALBERTA
DEPARTMENT OF HIGHWAYS
BRIDGE BRANCH, EDMONTON

FILE NO. _____ HWY. NO. _____ DWS. NO. _____
LOCATION SCALE as shown SHEET 5-785
STREAM _____

NO.	DATE	DESCRIPTION	BY
A	Jan 27/71	Stud anchors - alternate added	R.W.K.
B	Apr 16/70	B' dimension removed	J.C.Y.
C	Jan 1969	Anchor bolt location (as shown)	P.S.Z.
		Redrawn	