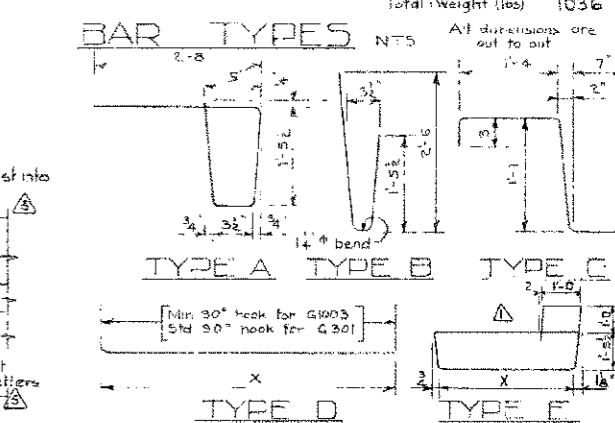
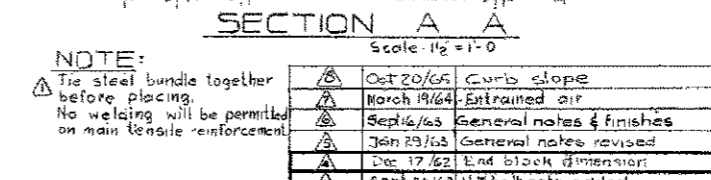
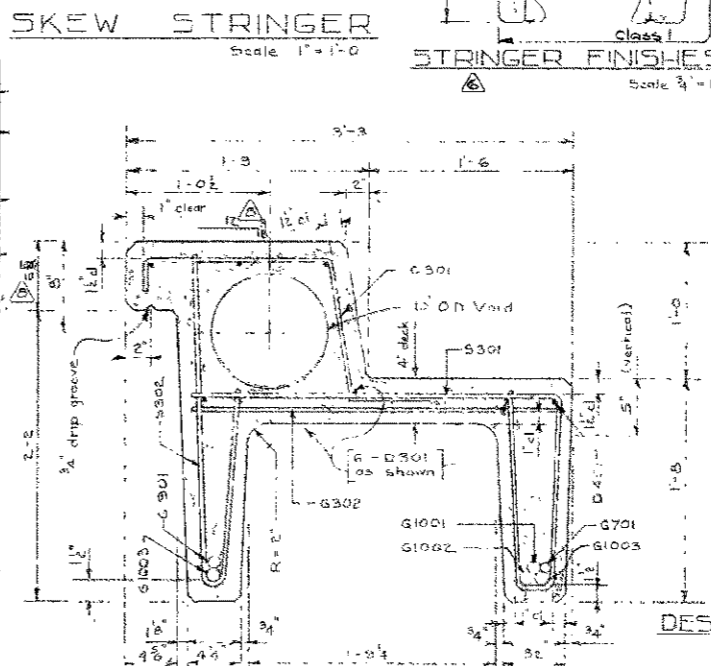
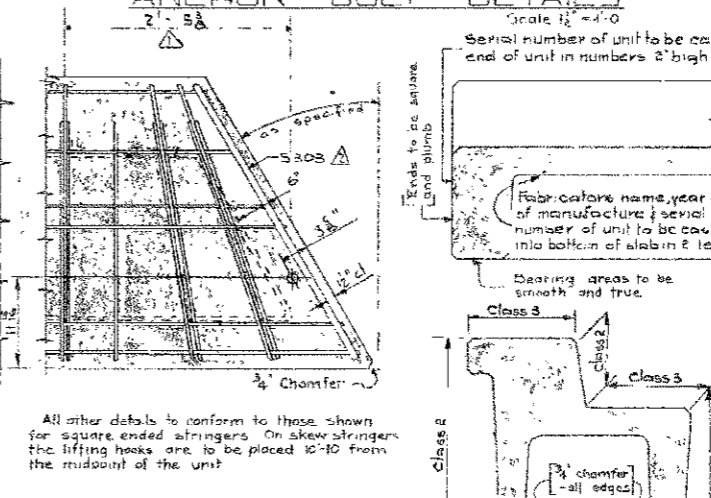
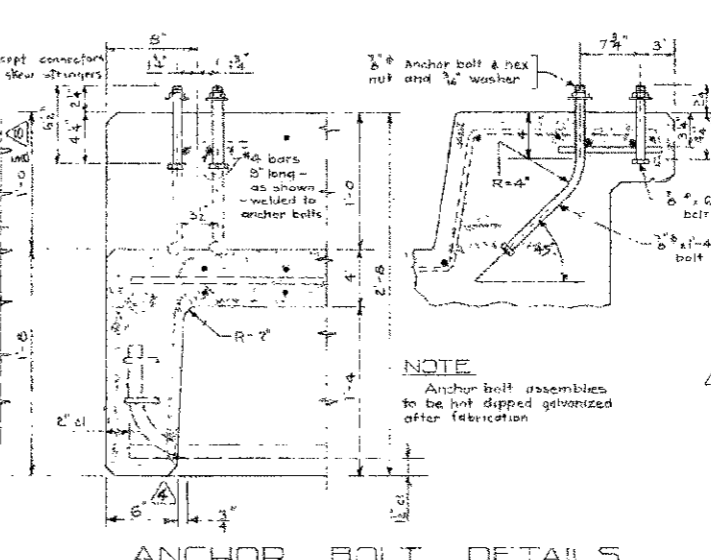
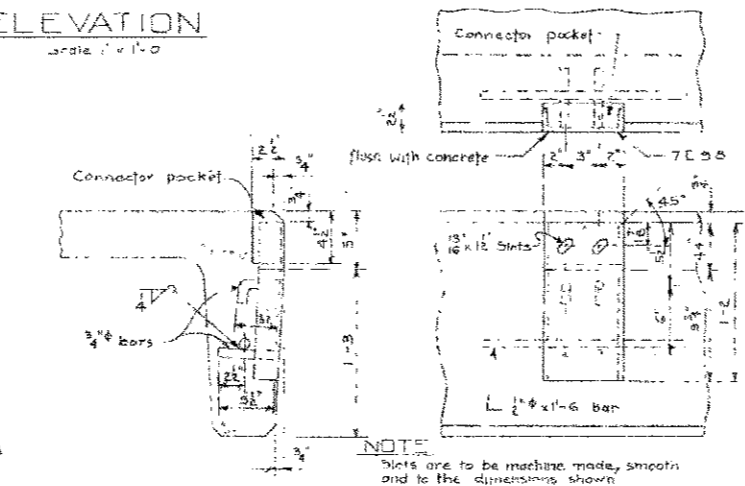
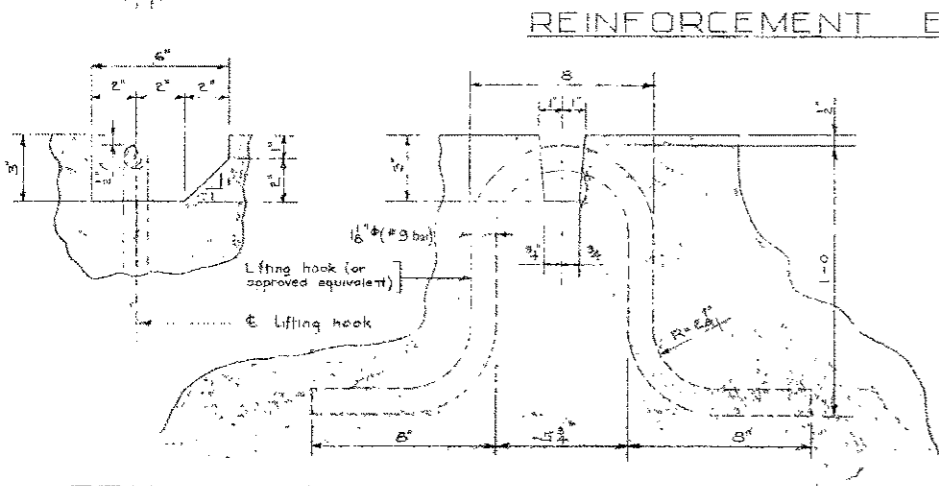
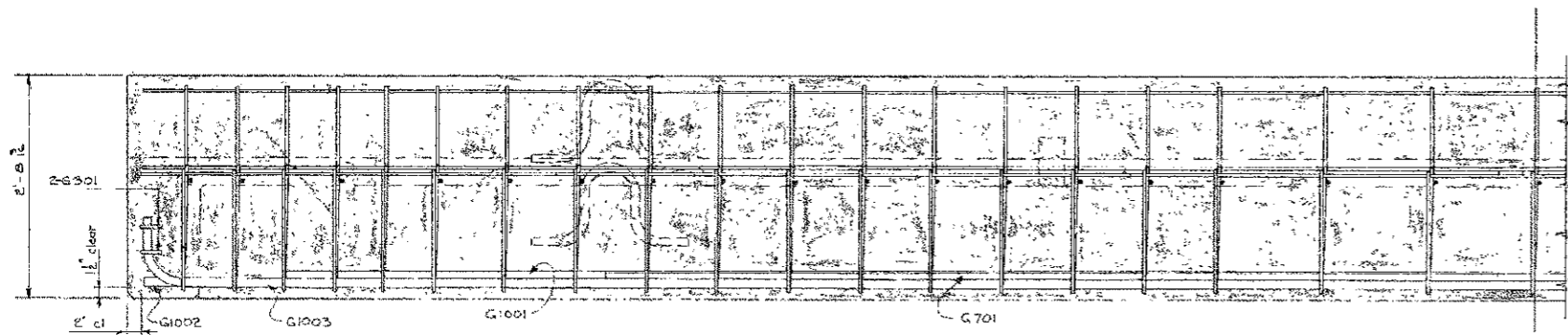
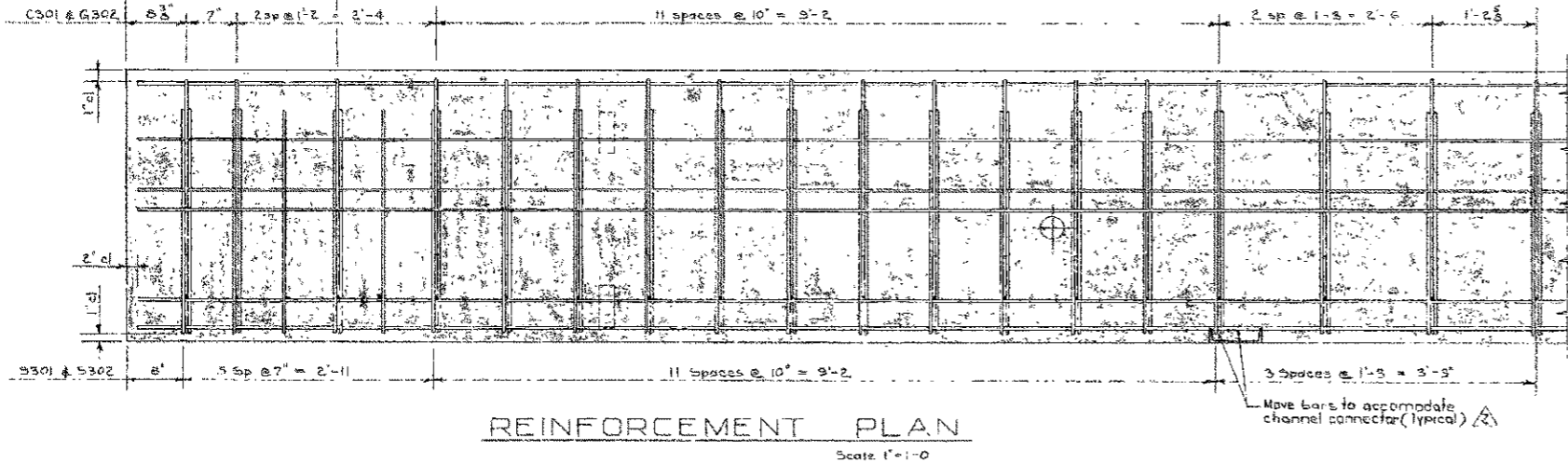
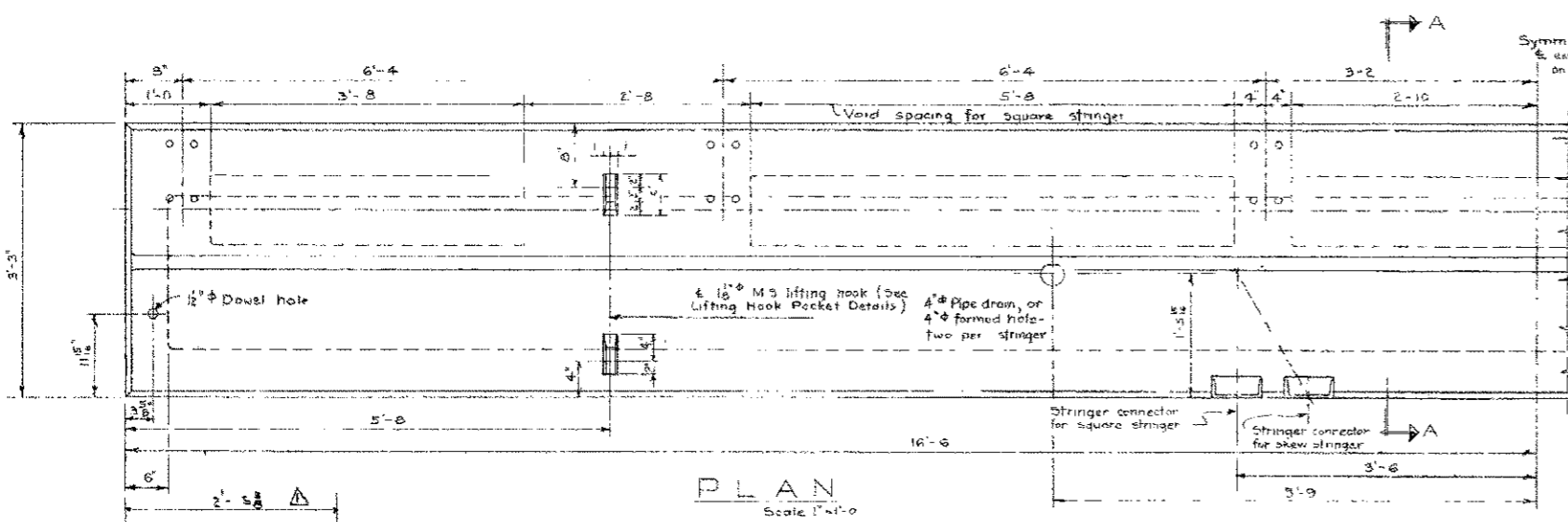


Mark	Size	No	Type	X	Length	Weight
G301	3	35	C		3'-5"	43
D301	3	6	Str		32'-5"	74
D401	4	1	Str		32'-5"	22
G301	3	4	D	2'-7"	3'-6"	5
G302	3	35	Str		2'-8"	35
G701	7	1	Str		22'-6"	46
G901	9	1	Str		28'-6"	100
G1001	10	1	Str		30'-0"	129
G1002	10	1	Str		32'-5"	141
G1003	10	2	D	32'-8"	34'-1"	293
S301	3	39	A		6'-0"	89
S302	3	39	B		4'-1"	60
S303	3	2	E		Skew ends only	
Total Weight (lbs)						1036



GENERAL NOTES
DESIGN

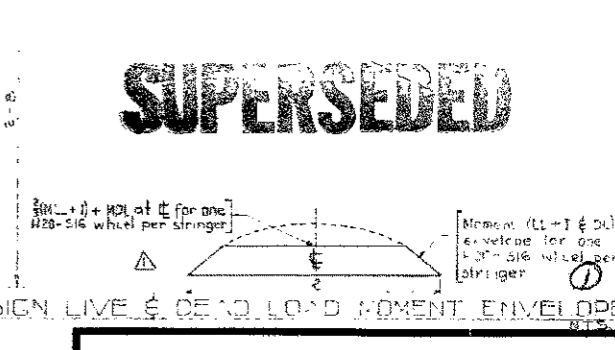
Live load - A.A.S.H.O. H20 - 316 modified as shown.
Dead load - includes allowance for 2" wearing surface.
Concrete - to be standard weight aggregates with maximum aggregate size of 1/2 inch. Minimum 28 day compressive strength to be 4000 p.s.i.

CONSTRUCTION

Entrained air shall be not less than 5%.
Disasters of all bars shall conform to the requirements minimum and all hooks, unless otherwise noted shall conform to the recommended sizes detailed in the A.C.I. Manual of Standard Practices for Detailing Reinforced Concrete Structures.
Each stringer shall have a cast center of 1/2 inch.
All acute angles on skewed stringers shall have 1/2 inch chamfer.
Concrete shall attain at least 30% of the specified 28 day compressive strength before the units are placed from the forms or lifted.
Each connector is to be allowed one 1/2 x 2" A.T. bolt, one heavy hex cast finished nut and three hardened washers. (Supplied by Dept.)

ERECTION

Any free space between the connectors shall be filled with washers.



PRECAST CONCRETE
33 FT SPAN TYPE HL
CURB STRINGER

NO.	DATE	DESCRIPTION	BY
1	Oct 20/65	Curve slope	UQ
2	March 19/64	Entrained air	RCH
3	Sept 6/63	General notes & finishes	RE
4	Jan 29/63	General notes revised	RE
5	Dec 17/62	End block dimension	WJH
6	Sept 26/62	H.T. bolt note added	RE
7	Sept 20/62	Connector clearance	LK
8	Aug 28/62	General revision	LK

DESIGNED BY: Robert E. Bolter
DATE: May 19 62
CHECKED BY: R. V. Lynch
DATE: May 19 62
CHECKED BY: A. G. ...
DATE: June 19 62

SUPERSEDED

FILE NO.	HWY. NO.	DWG. NO.
	5	5-785