

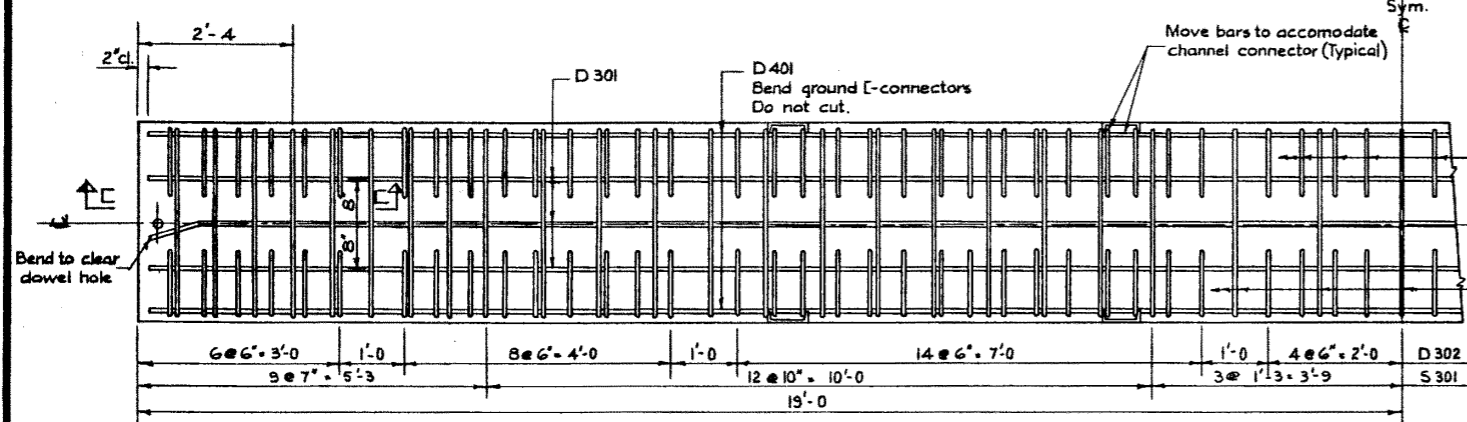
PLAN VIEW
Scale 3/4"=1'-0"

PROTECTION ANGLES
Scales 3/4"=1'-0"
To be supplied both ends of all stringers

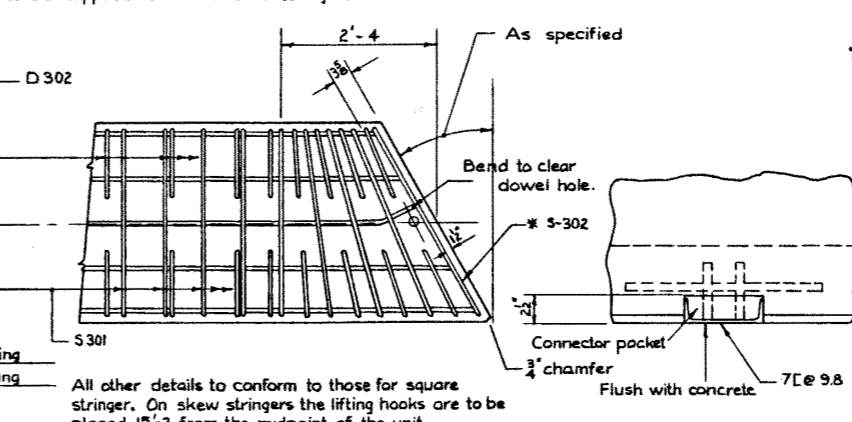
SECTION 'B-B'
Scale 3/4"=1'-0"

BAR LIST						
MARK	SIZE	NO.	TYPE	'X'	LENGTH	WEIGHT
D 301	3	3	Str.		37'-8	42*
D 302	3	136	"A"		1'-5	72*
D 303	3	37	Str.		2'-8	37*
S 301	3	47	"B"		9'-4	165*
G 301	3	4	"C"		3'-4	5*
D 401	4	2	Str.		37'-8	50*
D 501	5	38	Str.		2'-8	106*
S 302	3	2	"E"			
G 1001	10	2	Str.		30'-0	258*
G 1002	10	2	Str.		34'-0	293*
G 1003	10	4	"D"		39'-1	673*

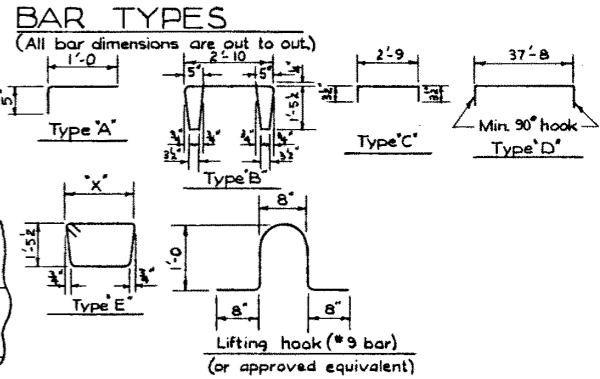
* For skewed stringer only. Total weight: 1701*



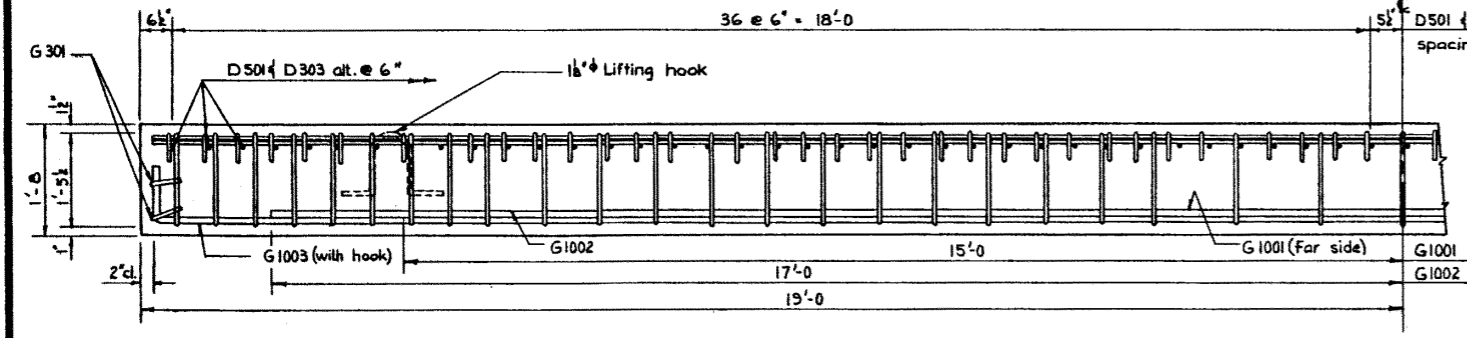
REINFORCEMENT PLAN
Scale 3/4"=1'-0"



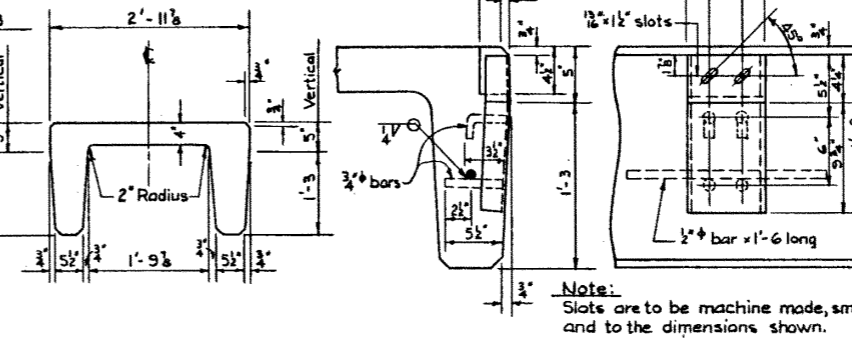
SKEW STRINGER
Scale 3/4"=1'-0"



BAR TYPES
Scale 3/4"=1'-0"

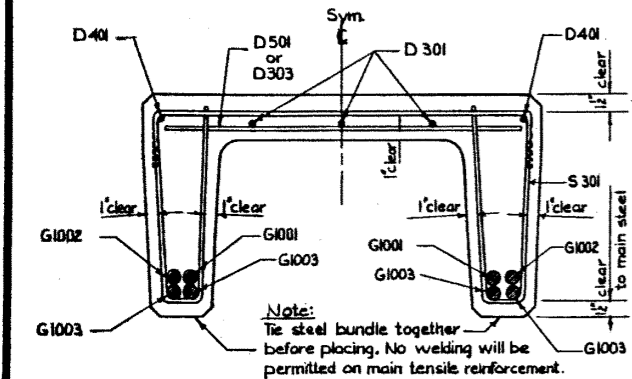


REINFORCEMENT ELEVATION
Scale 3/4"=1'-0"

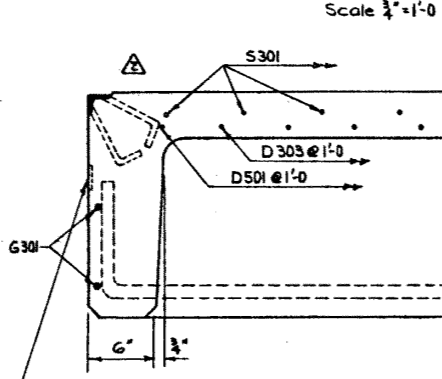


SECTION 'A-A'
Scale 3/4"=1'-0"

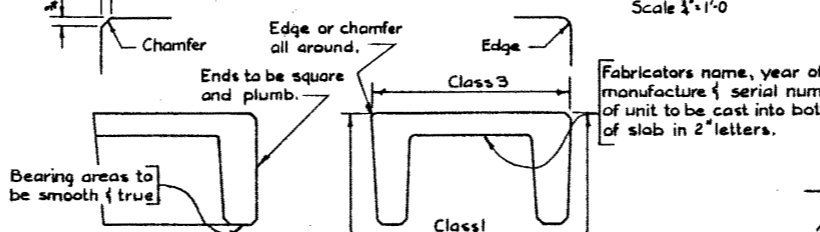
STRINGER CONNECTORS
Scale 1 1/2"=1'-0"



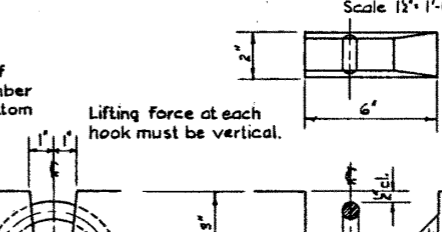
SECTION 'A-A'
Scale 1 1/2"=1'-0"



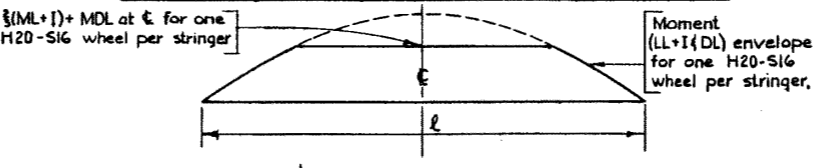
SECTION 'C-C'
Scale 1 1/2"=1'-0"



STRINGER FINISHES
Scale 3/4"=1'-0"



LIFTING HOOK POCKET
Scale 3"=1'-0"



DESIGN LIVE & DEAD LOAD MOMENT ENVELOPE
N.T.S.

- GENERAL NOTES:**
- DESIGN:**
- Live Load - A.A.S.H.O. H5-20-44 modified as shown.
 - Dead Load - includes allowance for 2" wearing surface.
 - Concrete - to be standard weight aggregates with maximum aggregate size of 3/4 inch. Minimum 28 day compressive strength to be 4500 p.s.i.
- CONSTRUCTION:**
- Entrained air shall be not less than 5%.
 - Diameters of all bends shall conform to the recommended minimums and all hooks, unless otherwise noted shall conform to the recommended sizes detailed in the A.C.I. Manual of Standard Practice for Detailing Reinforced Concrete Structures.
 - Each stringer shall have a cast camber of 3/4 inch.
 - All acute angles on skewed stringers shall have 3/4 inch chamfer.
 - Concrete shall attain at least 30% of the specified 28 day compressive strength before the units are stripped from the forms or lifted.
 - Each connector is to be allowed one 3/4 x 2" H.T. bolt, one heavy hex semi finished nut and three hardened washers. (Supplied by Dept.)
 - Units are to conform to the requirements of the Alberta Government Specification for the Manufacture of Precast Concrete Bridge Units.
- ERECTION:**
- Any free space between the connectors shall be filled with washers.

SUPERSEDED

PRECAST CONCRETE
38 FT. SPAN TYPE 'HC'
INTERIOR STRINGER

GOVERNMENT OF THE PROVINCE OF ALBERTA
DEPARTMENT OF HIGHWAYS
BRIDGE BRANCH, EDMONTON

FILE NO. _____ HWY. NO. _____ DWS. NO. _____
LOCATION SCALE as shown 5-186
STREAM SHEET OF _____

NO.	DATE	DESCRIPTION	BY
1	Jan. 18 1966	Buffer angle lowered	L.K.
2	Sept. 7, 1963	Redrawn by	V.G.B.

REVISIONS

DESIGNED BY Robert E. Bolter, 1962
DATE May 1962
CHECKED BY L. Kohlmann, 1962
DATE May 1962
R. E. B.
DATE JUNE 15 1962