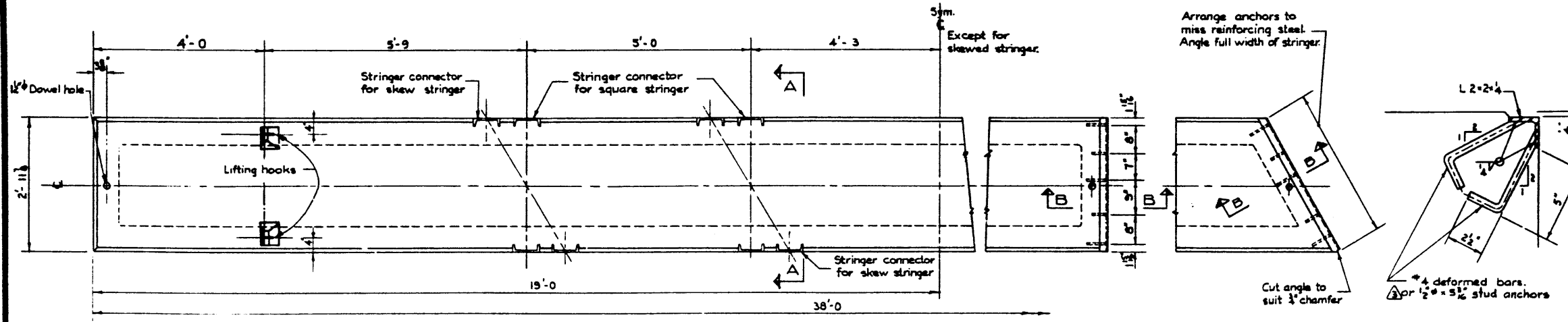
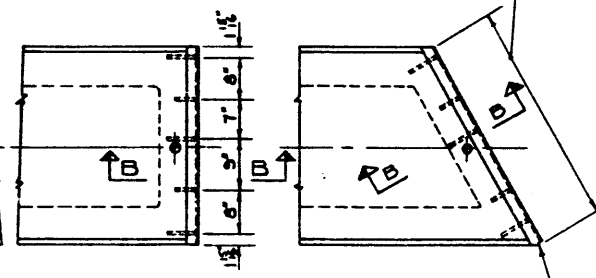


DESIGNED BY: Robert E. Bolter
 DATE: May 1962
 CHECKED BY: L. Kohlmann
 DATE: May 1962
 REVISIONS: R.E.B.
 DATE: June 15 1962



PLAN VIEW
Scale 3/4"=1'-0"

Arrange anchors to miss reinforcing steel. Angle full width of stringer.



PROTECTION ANGLES
Scales 3/4"=1'-0"
To be supplied both ends of all stringers

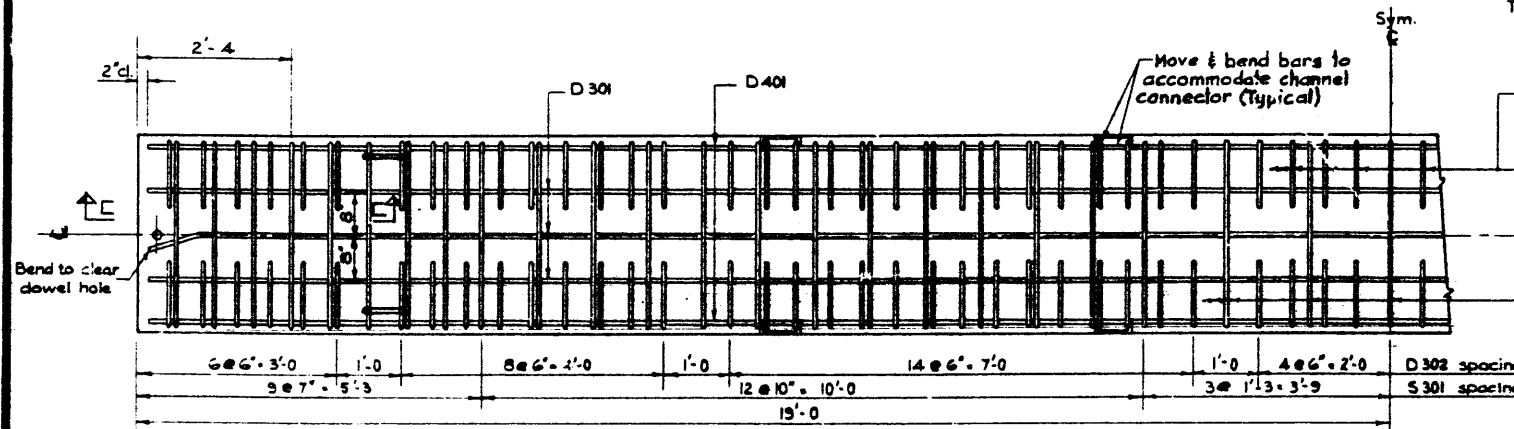
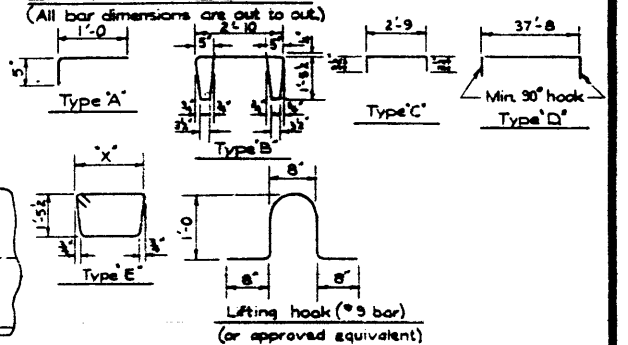
SECTION 'B-B'
Scale 3/4"=1'-0"

BAR LIST

MARK	SIZE	NO.	TYPE	'X'	LENGTH	WEIGHT
D 301	3	3	Str.		37'-8	44 ⁰
D 302	3	136	'A'		1'-5	72 ⁰
D 303	3	37	Str.		2'-8	37 ⁰
S 301	3	47	'B'		9'-4	165 ⁰
G 301	3	4	'C'		3'-4	5 ⁰
D 401	4	2	Str.		37'-8	30 ⁰
D 501	5	38	Str.		2'-8	106 ⁰
S 302	3	2	'E'		-	-
G 1001	10	2	Str.		30'-0	258 ⁰
G 1002	10	2	Str.		34'-0	293 ⁰
G 1003	10	4	'D'		39'-1	673 ⁰

* For skewed stringer only. Total weight: 1701⁰

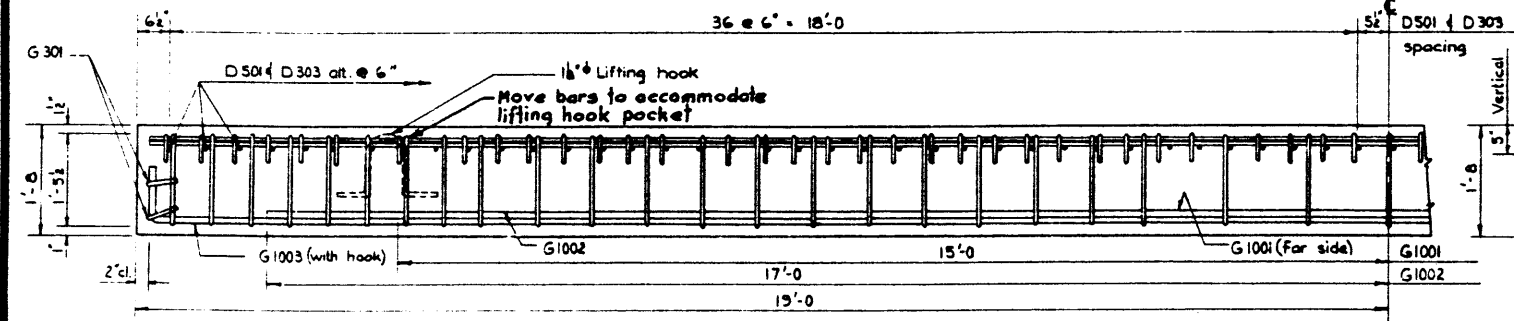
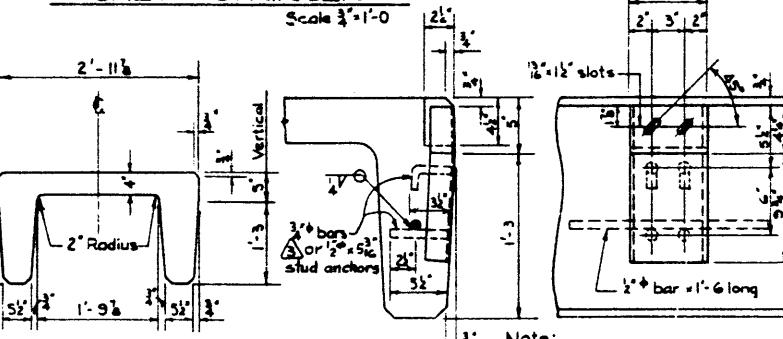
BAR TYPES



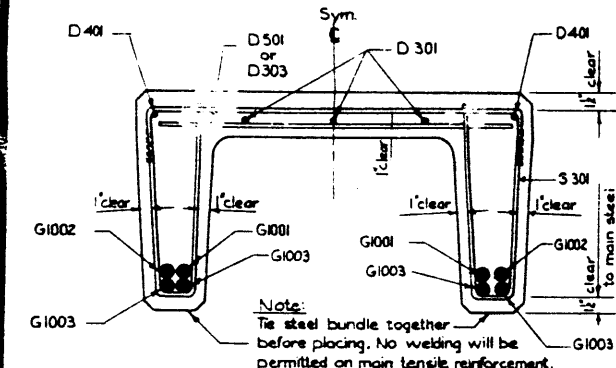
REINFORCEMENT PLAN
Scale 3/4"=1'-0"

All other details to conform to those for square stringer. On skew stringers the lifting hooks are to be placed 15'-0 from the midpoint of the unit.

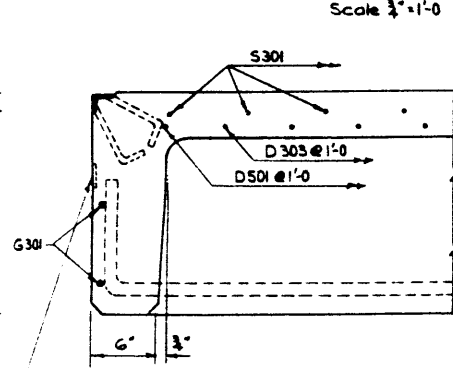
SKIEW STRINGER



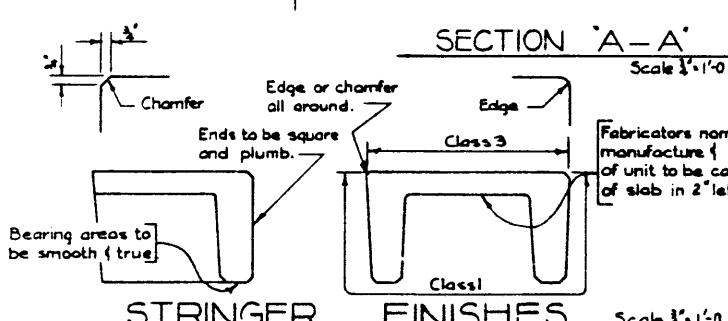
REINFORCEMENT ELEVATION
Scale 3/4"=1'-0"



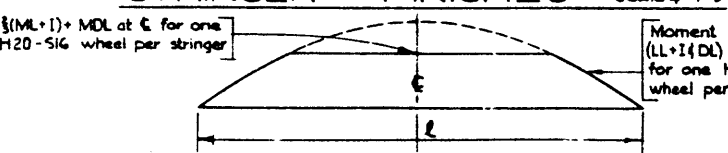
SECTION 'A-A'
Scale 1 1/2"=1'-0"



SECTION 'C-C'
Scale 1 1/2"=1'-0"

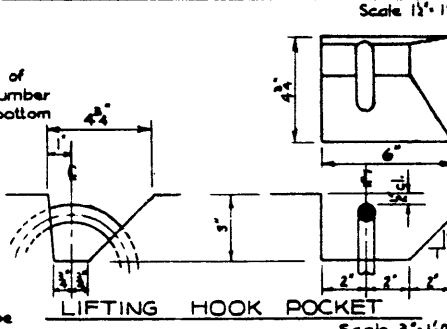


STRINGER FINISHES
Scale 3/4"=1'-0"



DESIGN LIVE & DEAD LOAD MOMENT ENVELOPE
N.T.S.

STRINGER CONNECTORS



LIFTING HOOK POCKET
Scale 3/4"=1'-0"

GENERAL NOTES:

- DESIGN:**
- Live Load - A.A.S.H.O. HS-20-44 modified as shown.
 - Dead Load - includes allowance for 2" wearing surface.
 - Concrete - to be standard weight aggregates with maximum aggregate size of 3/4" inch. Minimum 28 day compressive strength to be 4500 p.s.i.
- CONSTRUCTION:**
- Entrained air shall be not less than 5%.
 - Diameters of all bars shall conform to the recommended minimums and all hooks, unless otherwise noted shall conform to the recommended sizes detailed in the A.C.I. Manual of Standard Practice for Detailing Reinforced Concrete Structures.
 - Each stringer shall have a cast camber of 3/4" inch.
 - All acute angles on skewed stringers shall have 3/4" inch chamfer.
 - Concrete shall attain at least 30% of the specified 28 day compressive strength before the units are stripped from the forms or lifted.
 - Each connector is to be allowed one 3/4" x 2" H.T. bolt, one heavy hex semi finished nut and three hardened washers. (Supplied by Dept.)
 - Stringers shall conform to the requirements of the Alberta Government Specification for the Manufacture of Precast Concrete Bridge Units.
- ERECTION:**
- Any free space between the connectors shall be filled with washers.

PRECAST CONCRETE
 38 FT. SPAN TYPE 'HC'
 INTERIOR STRINGER

GOVERNMENT OF THE PROVINCE OF ALBERTA
 DEPARTMENT OF HIGHWAYS
 BRIDGE BRANCH, EDMONTON

FILE NO. _____ HWY. NO. _____
 LOCATION _____ SCALE _____ OR SHOWN _____
 STREAM _____ DIST. OF _____

REVISED BY: _____
 DATE: _____
 DESCRIPTION: _____
 BY: _____

5-786