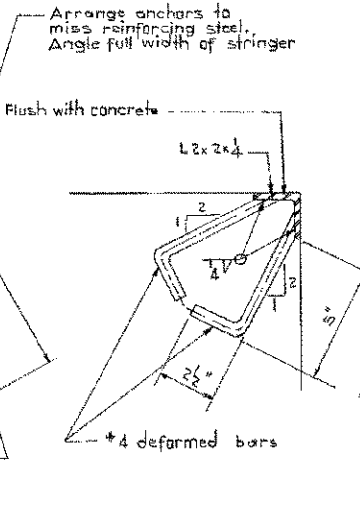


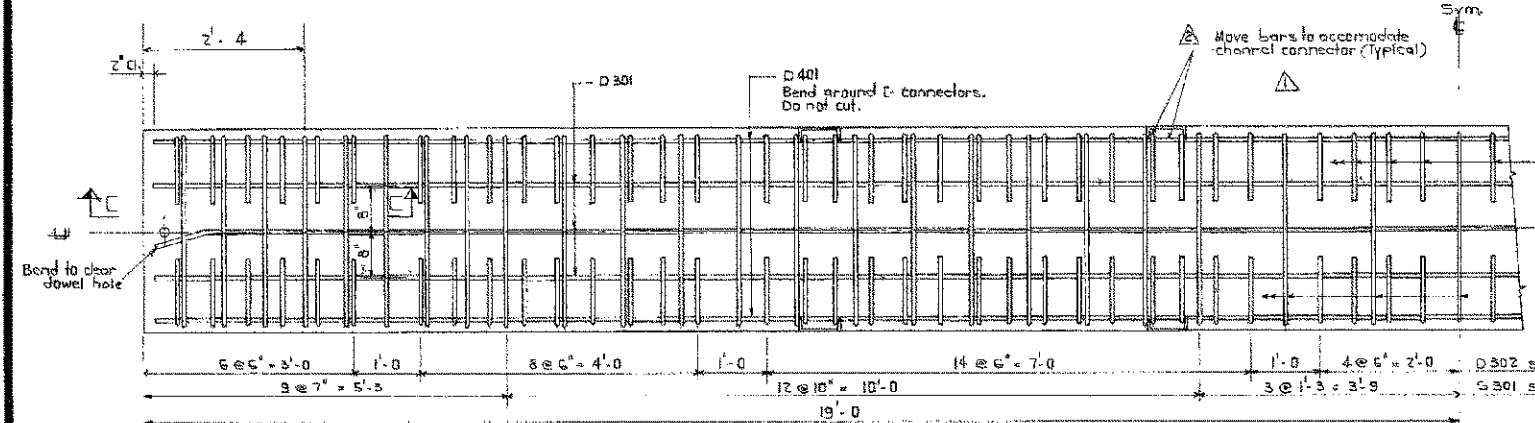
PLAN VIEW  
Scale 3/4" = 1'-0"

PROTECTION ANGLES  
Scale 3/4" = 1'-0"  
To be supplied both ends of all stringers

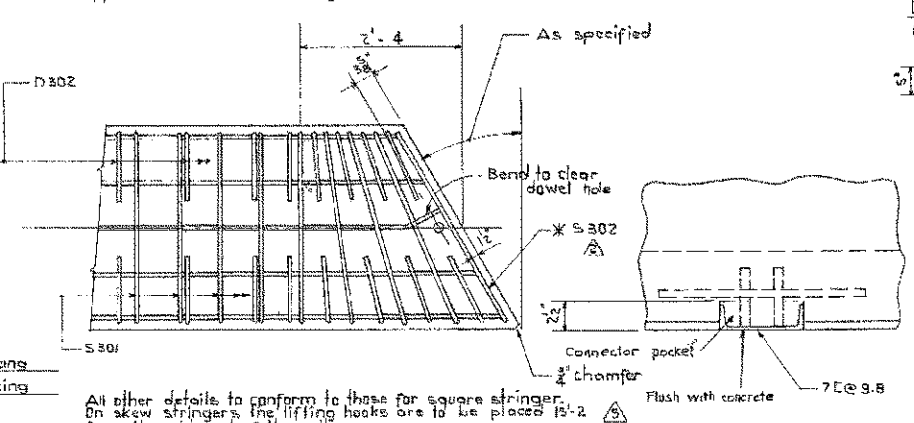
SECTION 'B-B'  
Scale 3/4" = 1'-0"



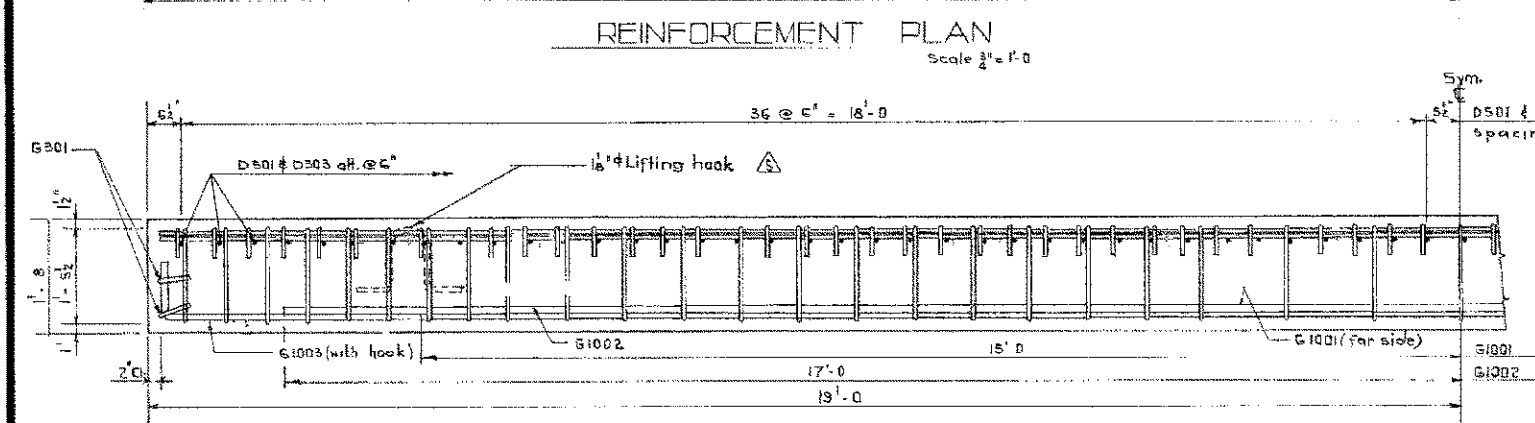
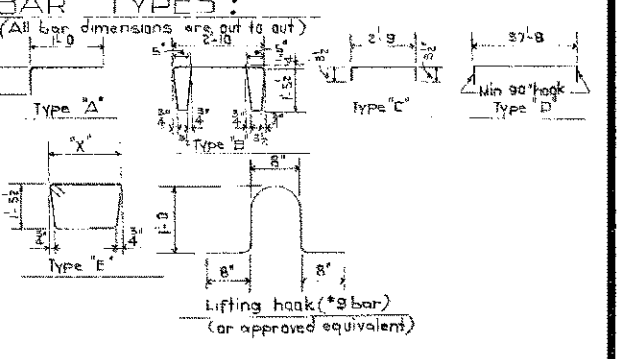
MARK	SIZE	NO	TYPE	"X"	LENGTH	WEIGHT
D 301	3	3	Str.		37'-8	42*
D 302	3	136	"A"		1'-5	72*
D 303	3	37	Str.		2'-8	37*
S 301	3	47	"B"		9'-4	155*
G 301	3	4	"C"		3'-4	5*
D 401	4	2	Str.		37'-8	50*
D 501	5	38	Str.		2'-8	106*
S 302	3	2	"E"			
G 1001	10	2	Str.		30'-0	258*
G 1002	10	2	Str.		34'-0	293*
G 1003	10	4	"D"		33'-1	673*
Total weight						1701*



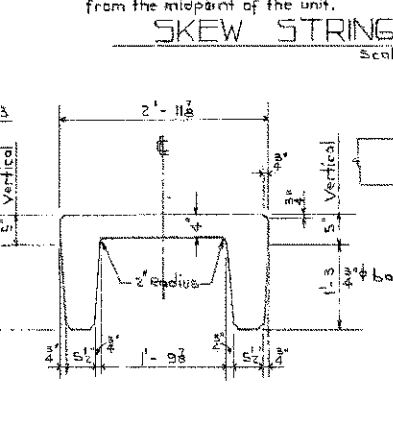
REINFORCEMENT PLAN  
Scale 3/4" = 1'-0"



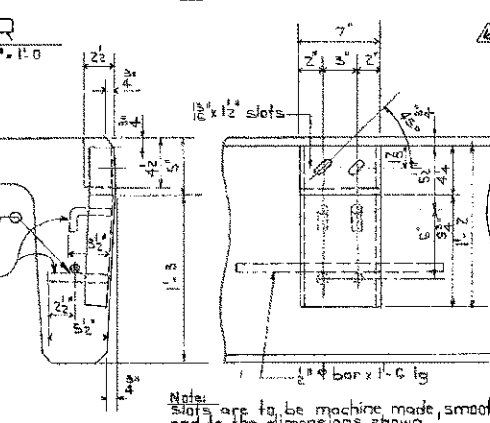
SKEW STRINGER  
Scale 3/4" = 1'-0"



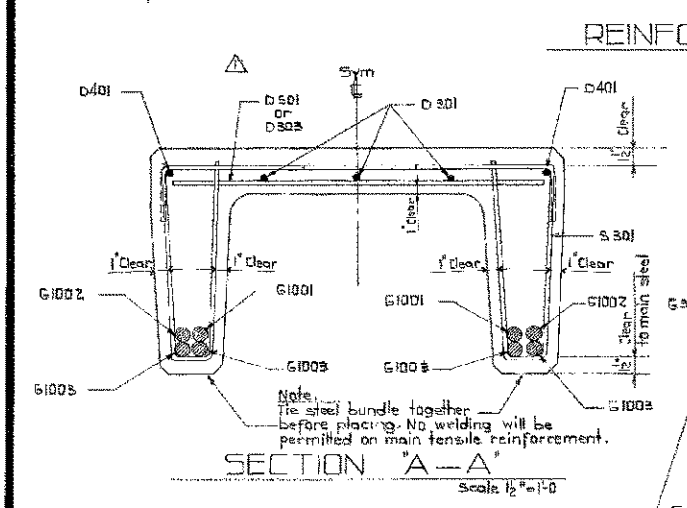
REINFORCEMENT ELEVATION  
Scale 3/4" = 1'-0"



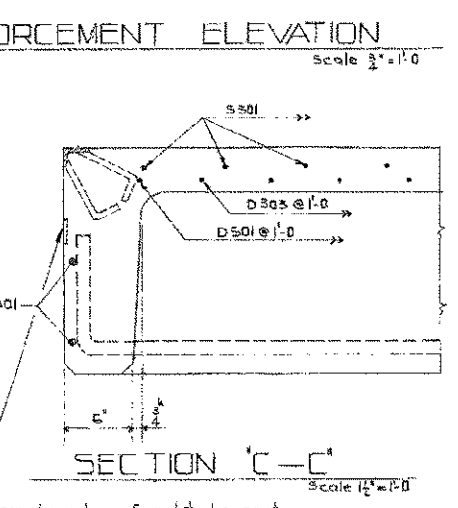
SECTION 'A-A'  
Scale 3/4" = 1'-0"



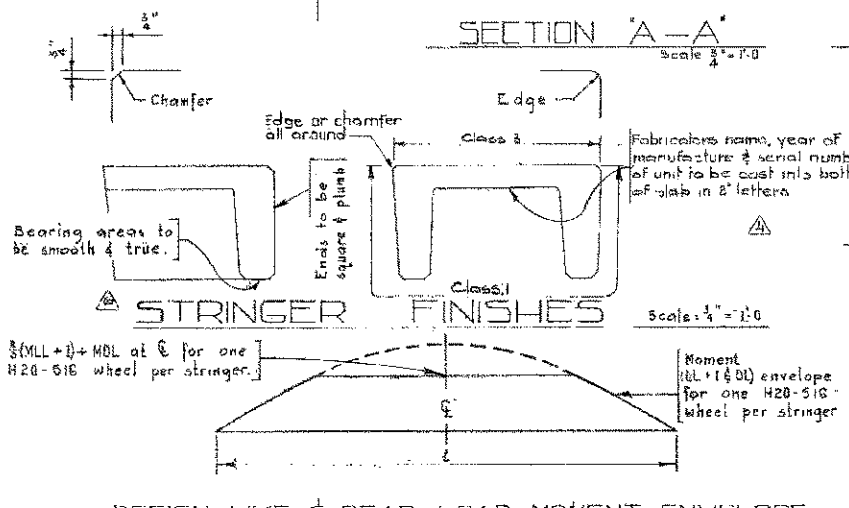
STRINGER CONNECTORS  
Scale 1 1/2" = 1'-0"



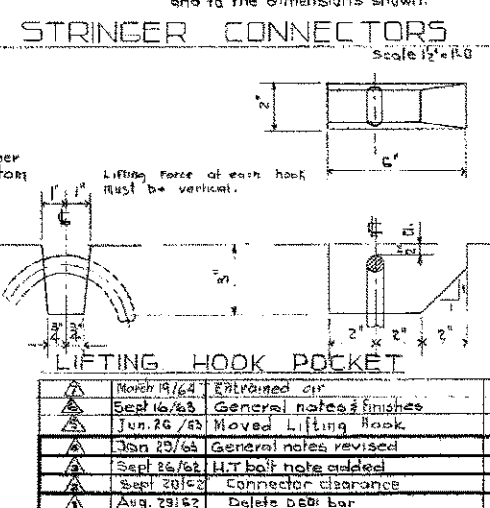
SECTION 'A-A'  
Scale 1/2" = 1'-0"



SECTION 'C-C'  
Scale 1/2" = 1'-0"



DESIGN LIVE & DEAD LOAD MOMENT ENVELOPE  
NTS.



NO.	DATE	DESCRIPTION	BY
1	March 19/64	Entrained air	R.C.H.
2	Sept 16/63	General notes & finishes	R.E.
3	Jun 26/63	Moved Lifting Hook	B.W.S.
4	Jan 29/63	General notes revised	R.E.
5	Sept 25/62	L.H.T. bolt note added	R.E.
6	Sept 30/62	Connector clearance	L.K.
7	Aug 29/62	Delete D 301 bar	L.K.

**GENERAL NOTES :**

**DESIGN**  
Live Load - A.A.S.H.O. H20 - S16 modified as shown.  
Dead Load - includes allowance for 2" wearing surface.  
Concrete - to be standard weight aggregates with maximum aggregate size of 3/4 inch. Minimum 28 day compressive strength to be 4500 p.s.i.

**CONSTRUCTION**  
Entrained Air shall be not less than 5%.  
Blunders of all bends shall conform to the recommended maximum and all hooks, unless otherwise noted shall conform to the recommended sizes detailed in the A.C.I. Manual of Standard Practice for Detailing Reinforced Concrete Structures.  
Each stringer shall have a cast chamfer of 3/8 inch.  
All acute angles on skewed stringers shall have 3/8 inch chamfer.  
Concrete shall attain at least 50% of the specified 28 day compressive strength before the units are straggled from the forms or lifted.  
Each connector is to be allowed one 1/2" x 2" A.T. bolt, one heavy hex seal finished nut and three hardened washers. (Supplied by Dept)

Units are to conform to the requirements of the Alberta Government Specification for the Manufacture of Precast Concrete Bridge Units.

**ERECTION**  
Any free space between the connectors shall be filled with washers.

**SUPERSEDED**  
Sept. 7/65

PRECAST CONCRETE  
38 FT. SPAN TYPE "HC"  
INTERIOR STRINGER

GOVERNMENT OF THE PROVINCE OF ALBERTA  
DEPARTMENT OF HIGHWAYS  
BRIDGE BRANCH, EDMONTON

FILE NO. \_\_\_\_\_ HWY. NO. \_\_\_\_\_ DWG. NO. 5-786  
LOCATION \_\_\_\_\_ SCALE as shown  
STREAM \_\_\_\_\_ SHEET \_\_\_\_\_ OF \_\_\_\_\_

DESIGNED BY: Noel E. Boller  
CHECKED BY: L. Koblmann  
DATE: May 19 62  
DATE: June 15 62