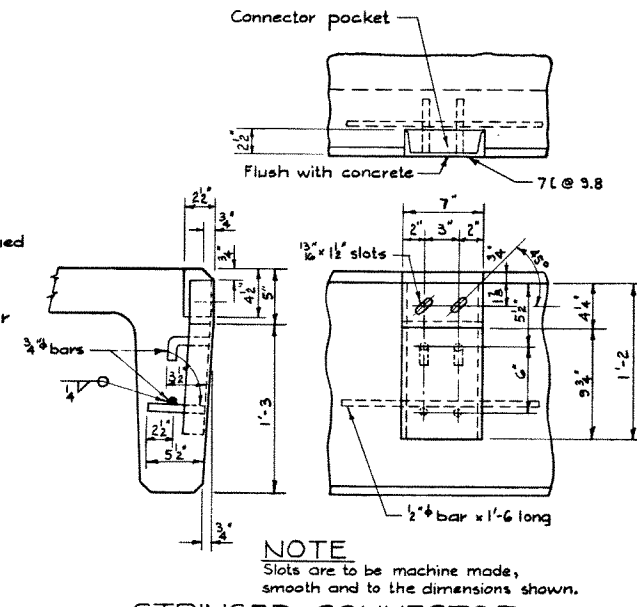
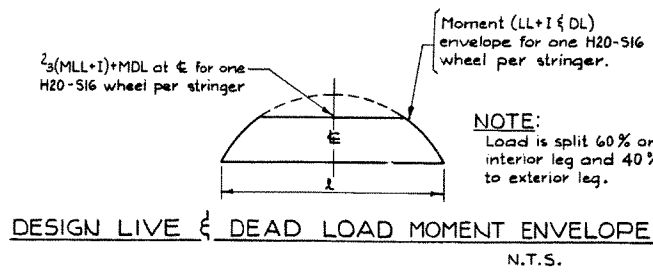
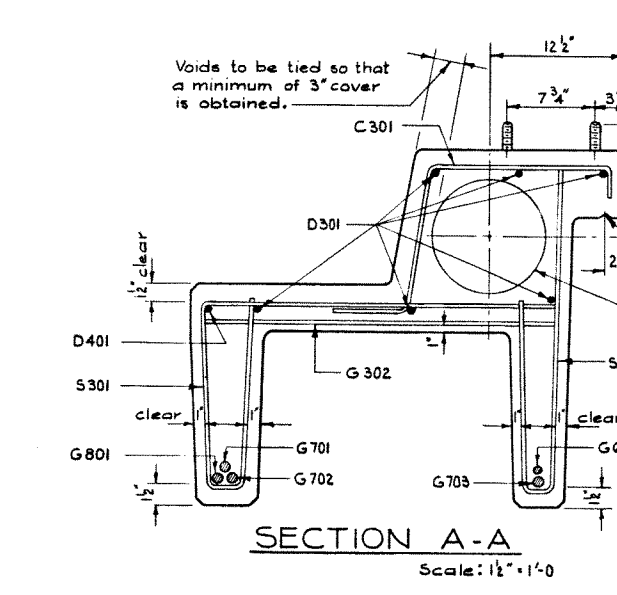
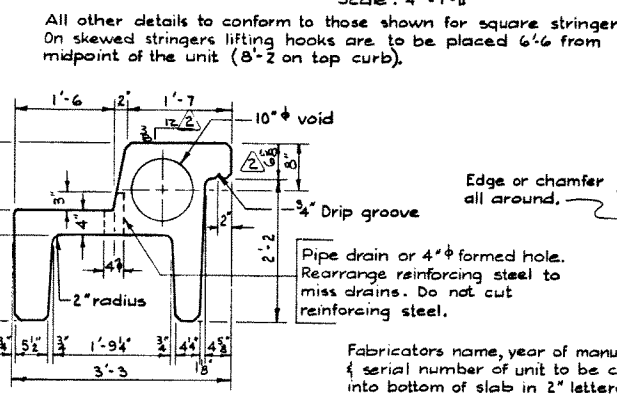
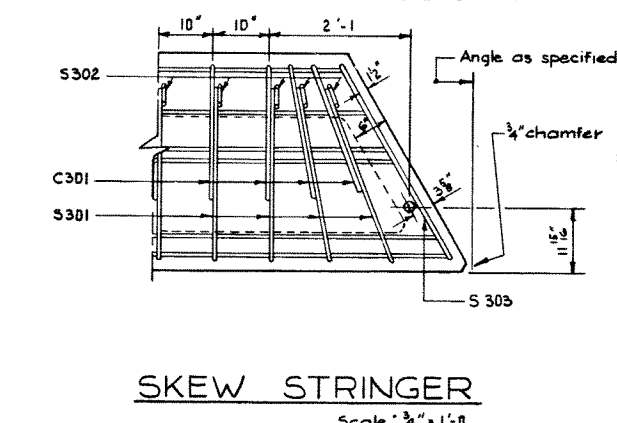
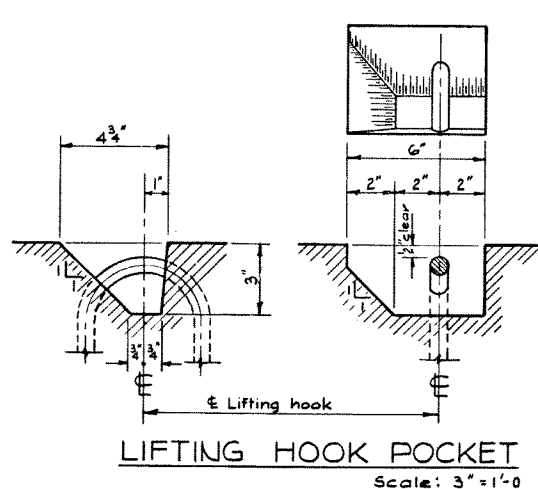
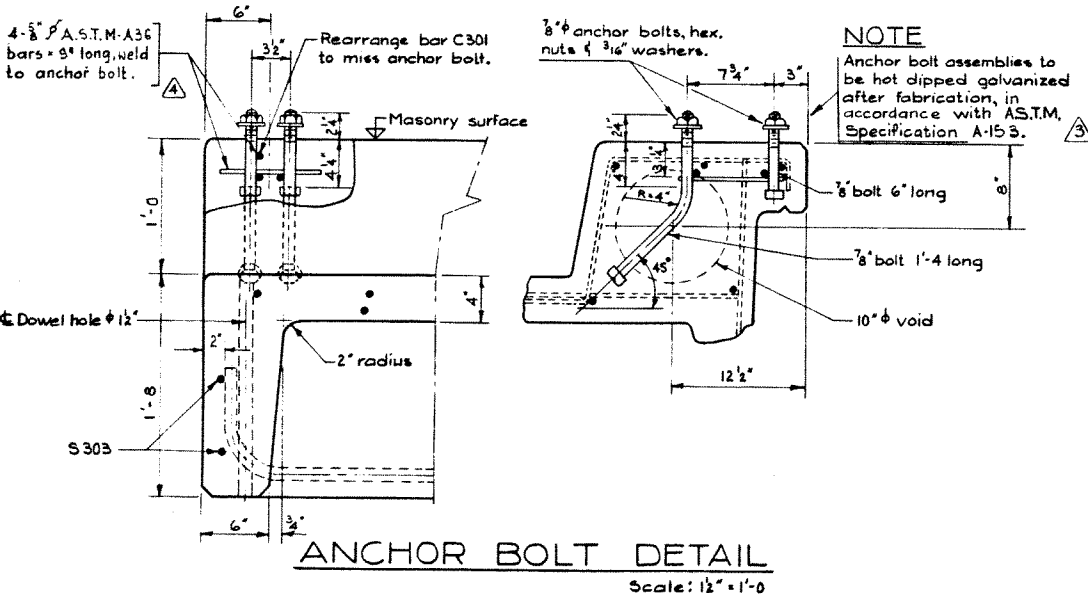
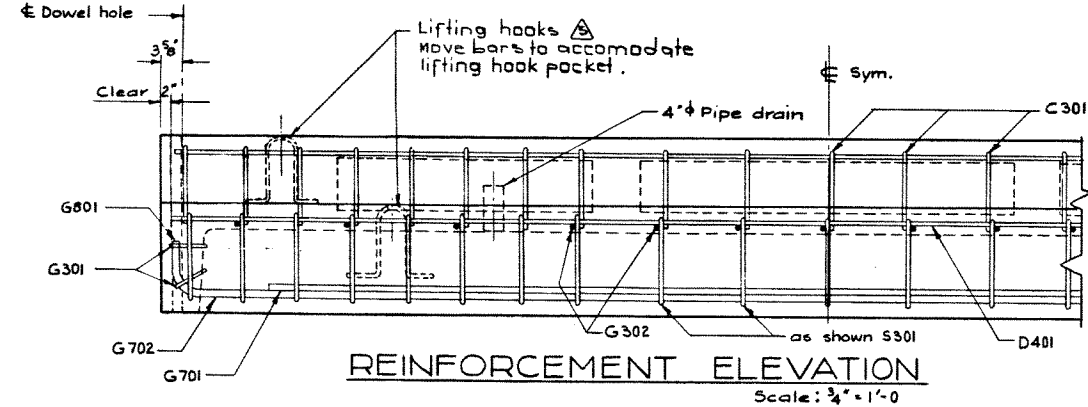
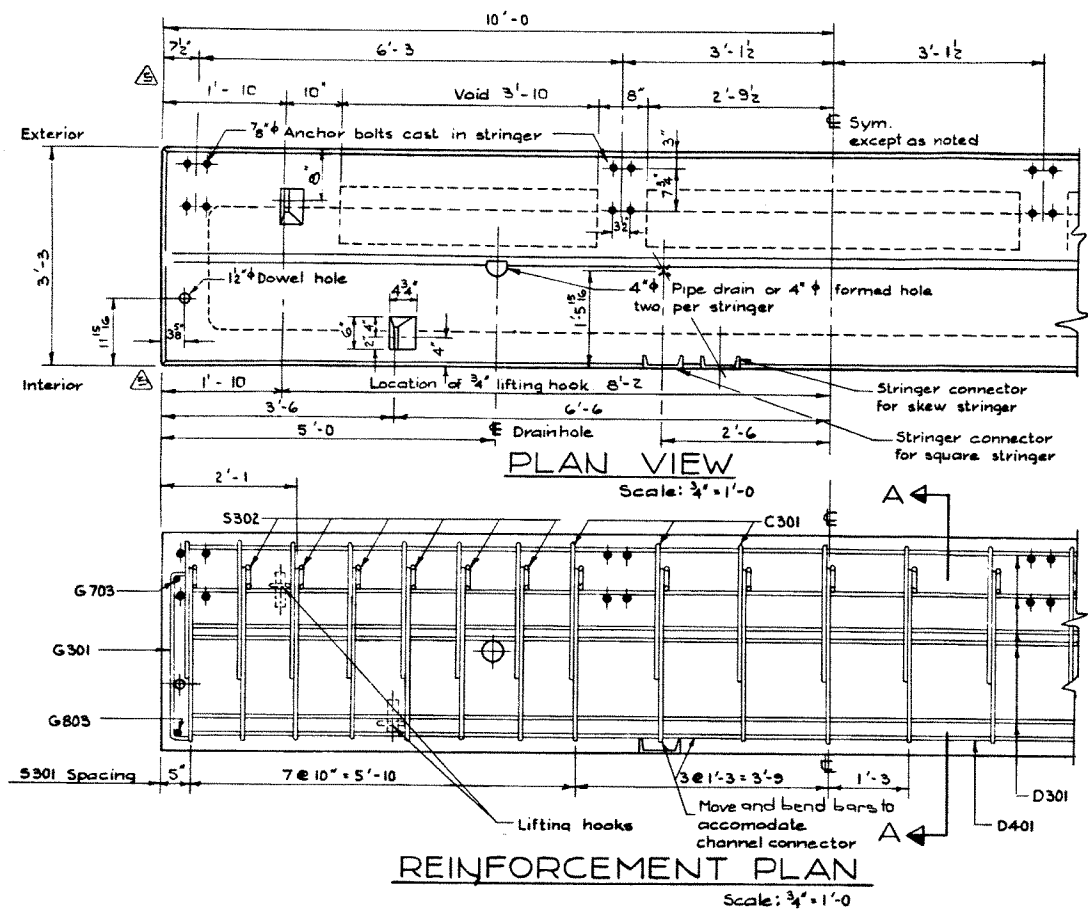


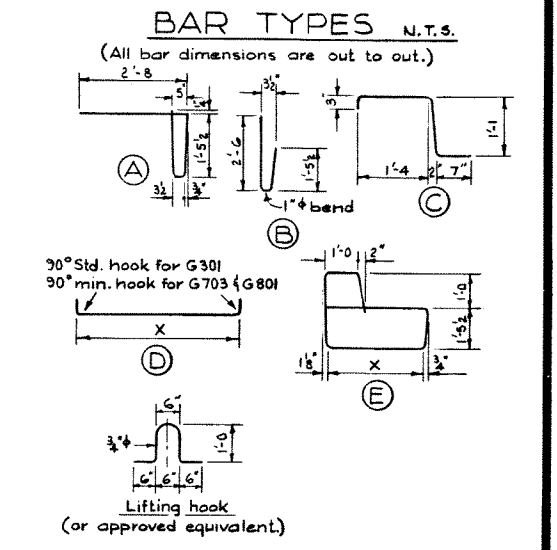
DESIGNED BY Robert E. Bolter
 DETAILED BY R. Christ
 CHECKED BY R.E.B.

DATE July 1962
 DATE July 1962
 DATE July 1962



BAR LIST						
Mark	Size	Number	Type	X	Length	Weight
S 301	3	21	A		6'-0	47
S 302	3	21	B		4'-1	32
G 301	3	4	D	2'-7	3'-6	5
G 302	3	13	Str.		2'-8	13
C 301	3	21	C		3'-3	26
D 301	3	6	Str.		19'-8	44
D 401	4	1	Str.		19'-8	13
G 801	8	1	D	19'-8	20'-9	55
G 701	7	1	Str.		16'-9	34
G 702	7	1	Str.		19'-0	39
G 703	7	1	D	19'-8	20'-7	42
G 601	6	1	Str.		17'-6	26
* S 303	3	2	E			

* For skewed stringers only. Total: 376 lbs.



GENERAL NOTES

DESIGN

- Live Load - A.A.S.H.O. HS-20-44 modified as shown.
- Dead Load - includes allowances for 2" wearing surface.
- Concrete - to be standard weight aggregates with maximum aggregate size of 3/4 inch. Minimum 28 day compressive strength to be 4000 p.s.i.

CONSTRUCTION

- Entrained air shall be not less than 5%.
- Diameters of all bends shall conform to the recommended minimums and all hooks, unless otherwise noted shall conform to the recommended sizes detailed in the A.C.I. Manual of Standard Practice for Detailing Reinforced Concrete Structures.
- Each stringer shall have a cast chamber of 3/4 inch.
- All acute angles on skewed stringers shall have 3/4 inch chamfer.
- Concrete shall attain at least 30% of the specified 28 day compressive strength before the units are stripped from the forms or lifted.
- Each connector is to be allowed one 3/4 x 2" H.T. bolt, one heavy hex semi finished nut and three hardened washers. (Supplied by Dept.)

ERECTION

- Stringers shall conform to the requirements of the Alberta Government Specification for the manufacture of Precast Concrete Bridge Units.
- Any free space between the connectors shall be filled with mortar.

SUPPLEMENTED

**PRECAST CONCRETE
 20 FT. SPAN TYPE 'HC'
 CURB STRINGER**

GOVERNMENT OF THE PROVINCE OF ALBERTA
 DEPARTMENT OF HIGHWAYS
 BRIDGE BRANCH, EDMONTON

FILE NO.	HWY. NO.	DWS. NO.
LOCATION	SCALE As shown	S-791
STREAM	SHEET	OF

NO.	DATE	DESCRIPTION	BY
1	Dec. 91 68	Location of lifting hooks & notes added	L. K.
2	Oct 26/67	Anchor bolt assembly.	S.W.S.
3	Feb. 14/67	ASTM Spec. added	DA
4	Oct 20/65	Curb slope	DC
5	Sept. 1, 1965	Redrawn	V.G.B.