

Mark	Size	No.	Type	X	Length	Weight
S301	3	37	A		6'-0	83
S302	3	37	B		4'-1	57
C301	3	31	C		3'-3	38
G301	4	4	D	2-7	3'-6	5
G302	3	31	str		2'-8	31
D301	3	6			27'-8	62
D401	4	1			27'-8	18
G1001	10	1	str		27'-8	114
G1002	10	1	D	27'-8	24'-1	125
G901	9	1	D	27'-8	28'-11	98
G801	8	1	str		25'-0	67
G701	7	1	str		22'-6	46
S303	3	2	E			

* For skewed stringer only. Total: 749 lbs.

GENERAL NOTES DESIGN

Live Load - A.A.S.H.O. H20 - S16 modified as shown.

Dead Load - includes allowance for 2" wearing surface.

Concrete - to be light weight aggregates with maximum aggregate size of 3/4 inch. Minimum 28 day compressive strength to be 4000 p.s.i. The unit weight of the concrete shall be 105 pounds per cubic foot plus or minus 5% when unit weight is determined in conformity with the requirements of the specification A.S.T.M. C330.

CONSTRUCTION

Entrained Air shall be between 5% & 8%.

Diameters of all bends shall conform to the recommended minimums and all hooks, unless otherwise noted shall conform to the recommended sizes detailed in the A.C.I. Manual of Standard Practice for Detailing Reinforced Concrete Structures.

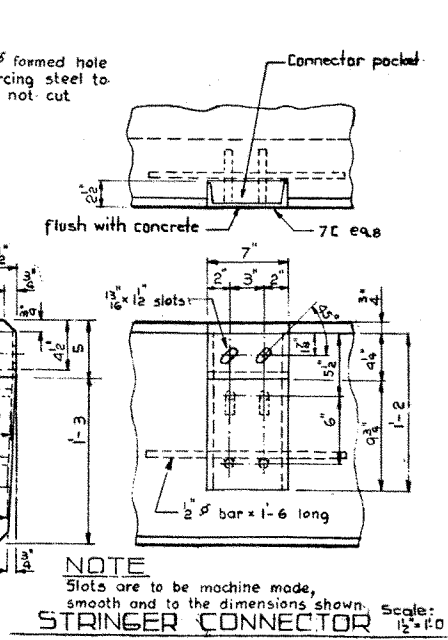
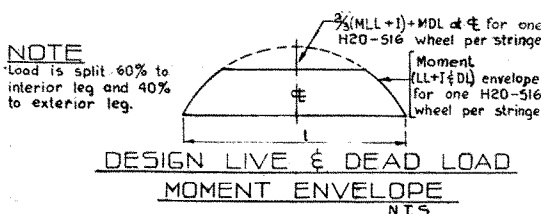
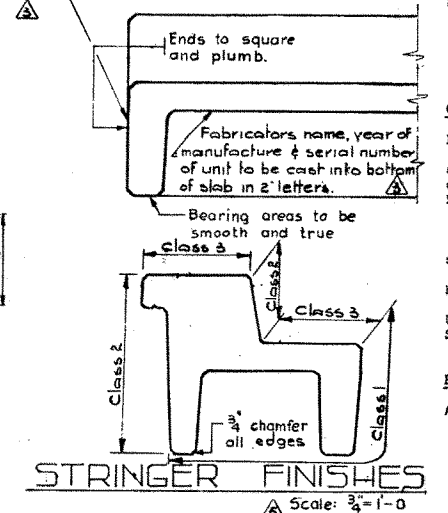
Each stringer shall have a cast chamfer of 1/4 inch. All acute angles on skewed stringers shall have 3/8 inch chamfer. Concrete shall attain at least 30% of the specified 28 day compressive strength before the units are stripped from the forms or lifted.

Each connector is to be allowed one 1/2" x 2" H.T. bolt, one heavy hex semi finished nut and three hardened washers. (Supplied by Dept.)

Units are to conform to the requirements of the Alberta Government Specification for the Manufacture of Precast Concrete Bridge Units.

ERECTION

Any free space between the connectors shall be filled with washers.



NOTE: Slots are to be machine made, smooth and to the dimensions shown.

NO.	DATE	DESCRIPTION	BY
1	Sept 16/63	General notes & finishes	R.E.
2	July 2/63	Detail slot cut out for Main Unit	VLF
3	Jan 23/63	General notes revised	R.E.
4	Sept 26/62	H.T. bolt note added	R.E.
5	Sept 20/62	Connector clearance	L.K.
6	July 14/64	Round voids added	L.K.
7	June 30/64	Lifting hook dimensions	B.T.

SUPERSEDED
Sept. 7/65

PRECAST CONCRETE
28FT. SPAN TYPE "HC"
CURB STRINGER

GOVERNMENT OF THE PROVINCE OF ALBERTA
DEPARTMENT OF HIGHWAYS
BRIDGE BRANCH, EDMONTON

FILE NO. _____ HWY. NO. _____ DWG. NO. 5-792
LOCATION _____ SCALE As shown
STREAM _____ SHEET _____ OF _____

DESIGNED BY Robert E. Butler
DATE August 1962
DETAILED BY Richard Chwist
DATE August 1962
CHECKED BY _____
DATE _____