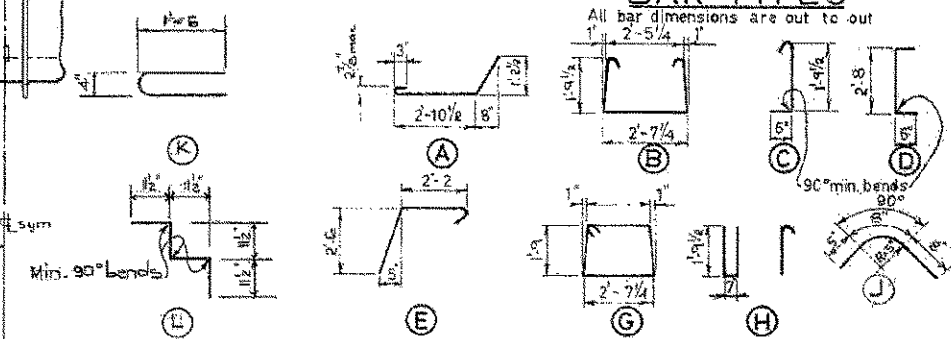


BAR LIST

Mark	Size	No.	Type	Length	Weight
CS 301	3	88	A	4'-7"	152
S 302	4	65	B	6'-10"	167
S 303	4	65	C	2'-7"	63
S 304	3	32	L	3'-10"	48
S 305	3	4	D	3'-8"	6
S 501	5	44	E	5'-2"	237
S 401	4	2	G	9'-4"	12
S 402	4	6	Str.	28'-0"	112
E 501	5	4	H	5'-2"	22
S 507	3	22	J	1'-9"	14
S 403	4	6	K	3'-0"	11
Total lbs.:					842

BAR TYPES



GENERAL NOTES

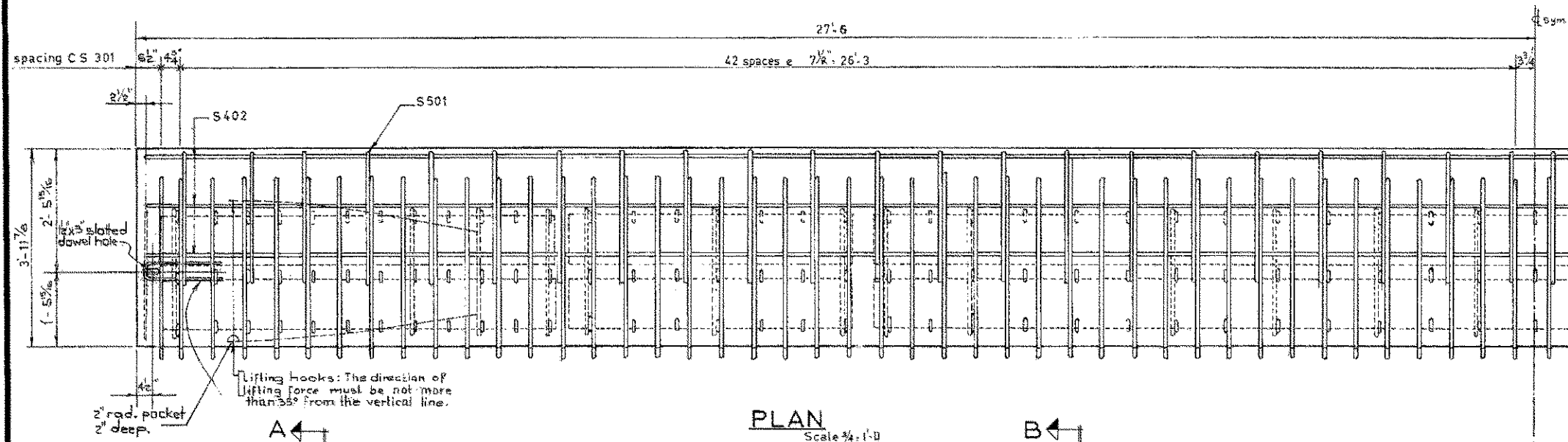
DESIGN
A.A.S.H.O. 1961 Specifications except allowable initial concrete stress = 285 p.s.i. in tension.
Loading: 3/5 of one wheel line of an H20-S16-44 truck plus full dead load plus 2' wearing surface.

MATERIALS
Concrete shall be of standard weight aggregate with a maximum size of 3/4". Minimum compressive strength shall be 5000 p.s.i. at 28 days. Air entrainment shall be not less than 5%.

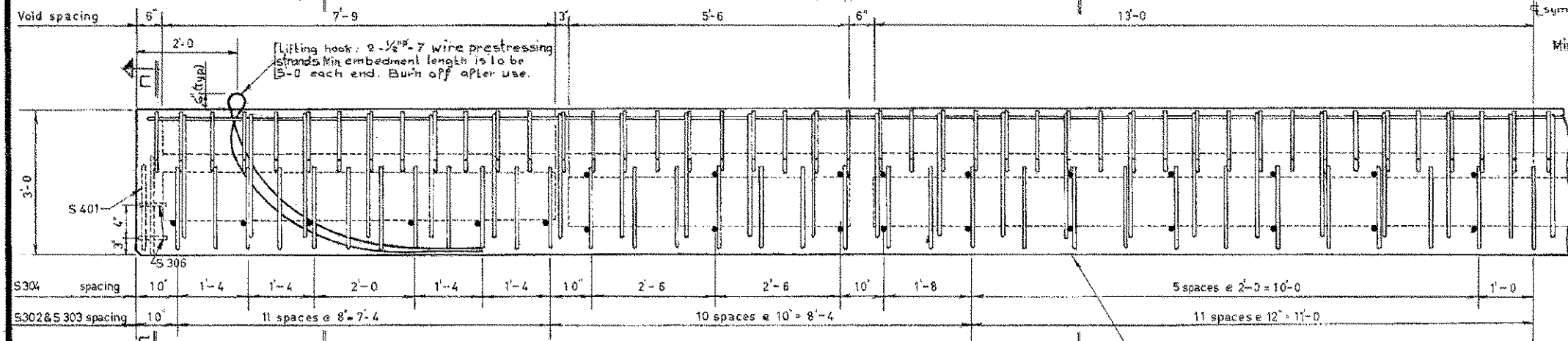
FABRICATION
Reinforcement: Diameters of all bars and details of all hooks, unless otherwise noted shall conform to the recommended sizes detailed in the A.C.I. Manual of Standard Practices for Detailing Reinforced Concrete Structures.
Prestressing Steel: Initial tensioning load = 25.2 k/strand
Design load = 20.16 k/strand
Concrete must attain 4,000 p.s.i. compressive strength before the prestressing force is transferred.
Anchor bolt assemblies are to be cast in stringer at spacings as required.

ERECTION
Units are to conform to the requirements of the Bridge Branch Specifications for Prestressed Concrete Bridge Units.
The surface of girth keys shall be sandblasted. If end blockouts are called for their surfaces shall be sandblasted.

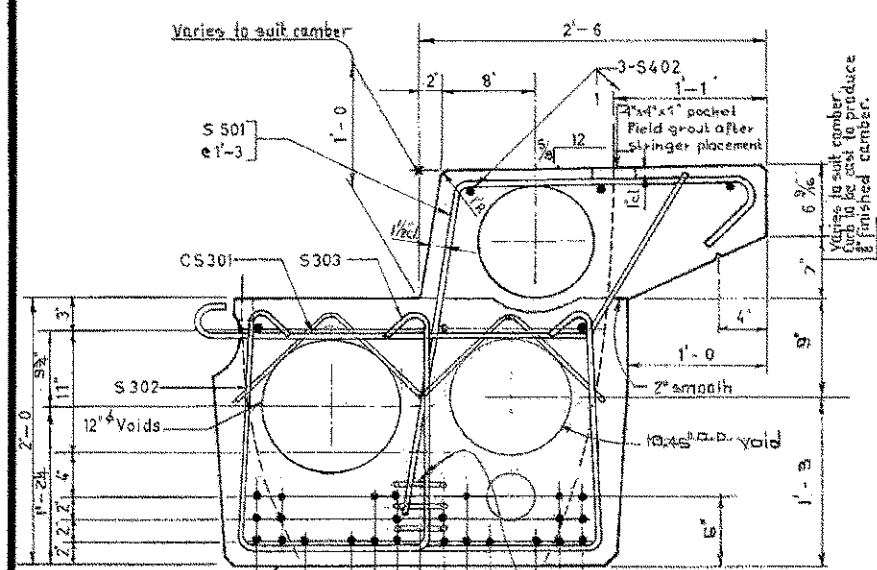
Lifting force at each hook must be not more than 35° from the vertical line at all times. Stringer surface must be level at all times.



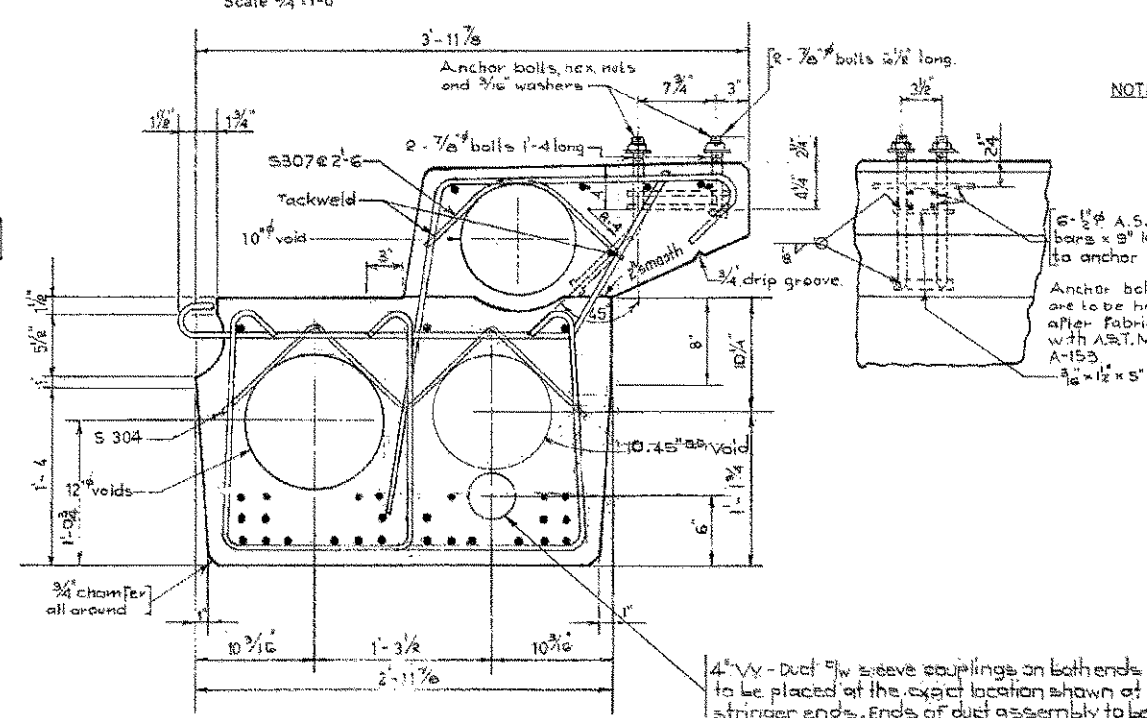
PLAN
Scale 1/4" = 1'-0"



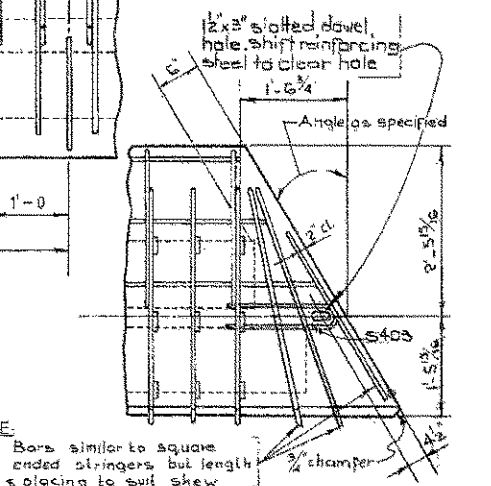
ELEVATION
Scale 3/4" = 1'-0"



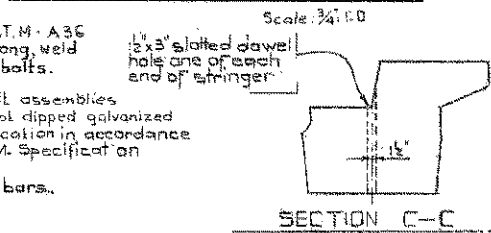
SECTION A-A
Scale 1/4" = 1'-0"



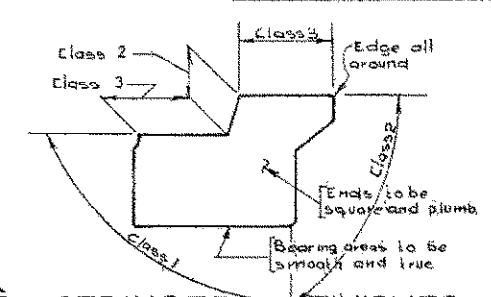
SECTION B-B
Scale 1/2" = 1'-0"



SKewed End Steel
Scale 3/4" = 1'-0"



SECTION C-C



STRINGER FINISHES

**SUPERSEDED
DRAWING IN USE
FROM OCT. 15th/70 IS
A PHOTOGRAPH OF
TRACING.**

**PRESTRESSED CONCRETE
55 FT SPAN
TYPE "M" CURB STRINGER**

GOVERNMENT OF THE PROVINCE OF ALBERTA
DEPARTMENT OF HIGHWAYS
BRIDGE BRANCH, EDMONTON

NO.	DATE	DESCRIPTION	BY
		Redrawn	S.T.
REVISIONS			

FILE NO. _____ HWY. NO. _____
LOCATION _____ SCALE SHOWN _____
STREAM _____ SHEET _____ OF _____

DESIGNED BY D.H. GUDD DATE July 1962
DETAILED BY R. Elenbas DATE July 1962
CHECKED BY _____ DATE _____