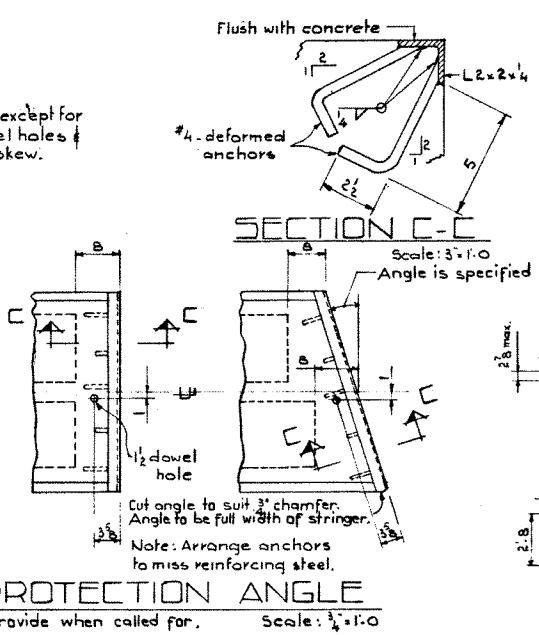
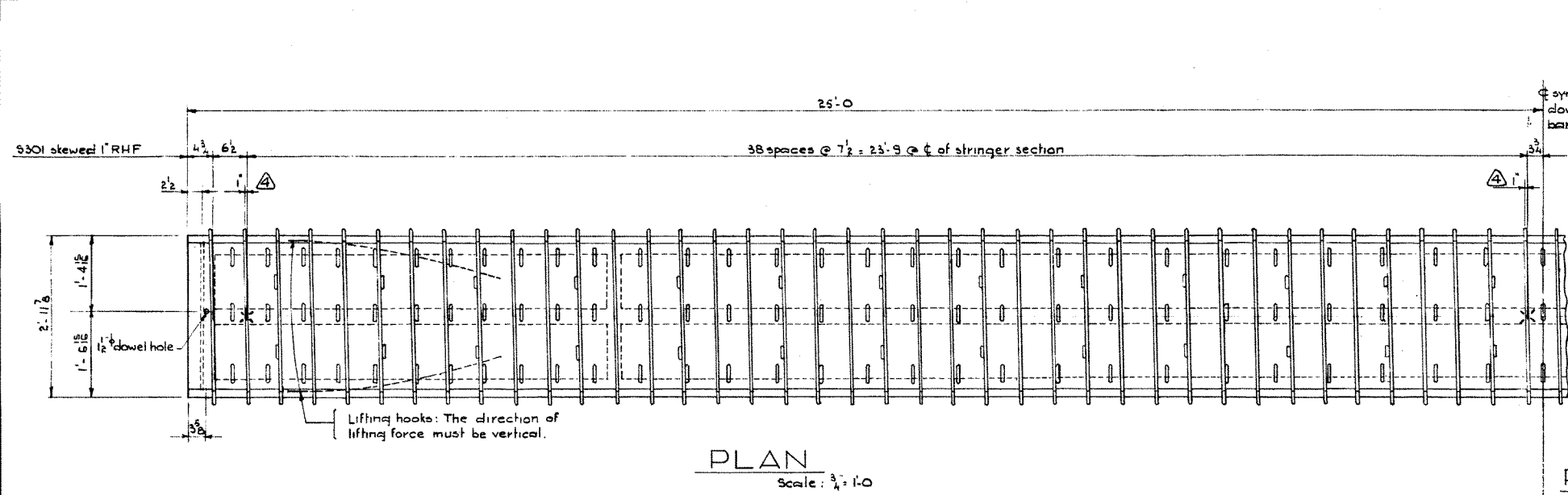
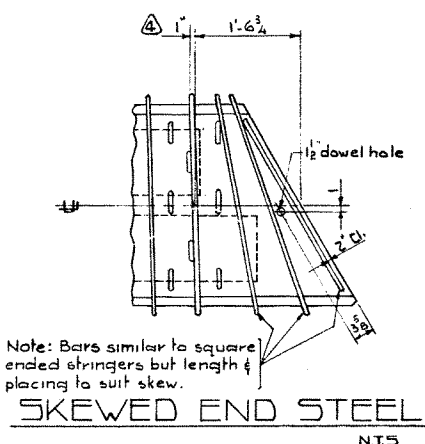
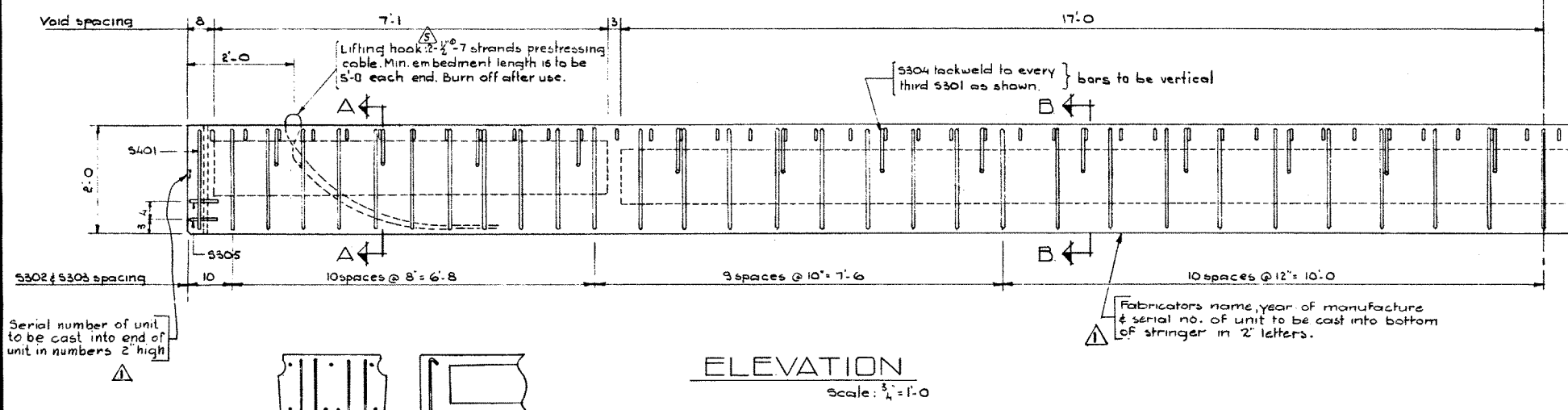
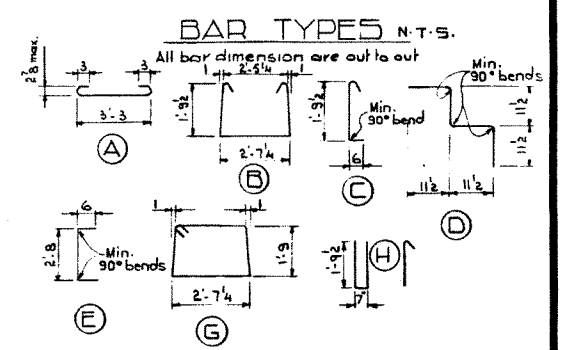


DESIGNED BY: D.H. QUARR  
 DATE: July 1962  
 DETAILED BY: R.E. SHIBAS  
 DATE: July 1962  
 CHECKED BY:  
 DATE:



BAR LIST						
Mark	Size	No	Type	Length	Weight	
S301	3	80	A	4'-0	120	
S302		59	B	6'-10	152	
S303		59	C	2'-7	57	
S304		26	D	3'-10	37	
S305	3	4	E	3'-8	6	
S401	4	2	G	9'-4	12	
E501	5	4	H	5'-2	22	
Total					406	lbs



**GENERAL NOTES**

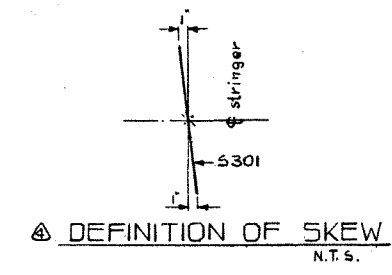
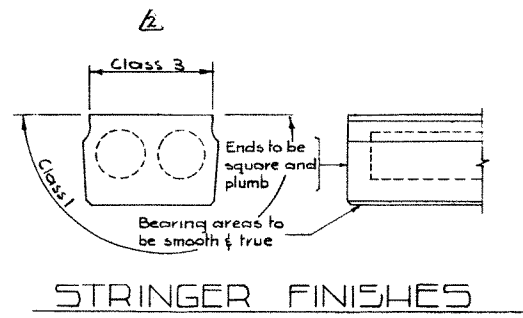
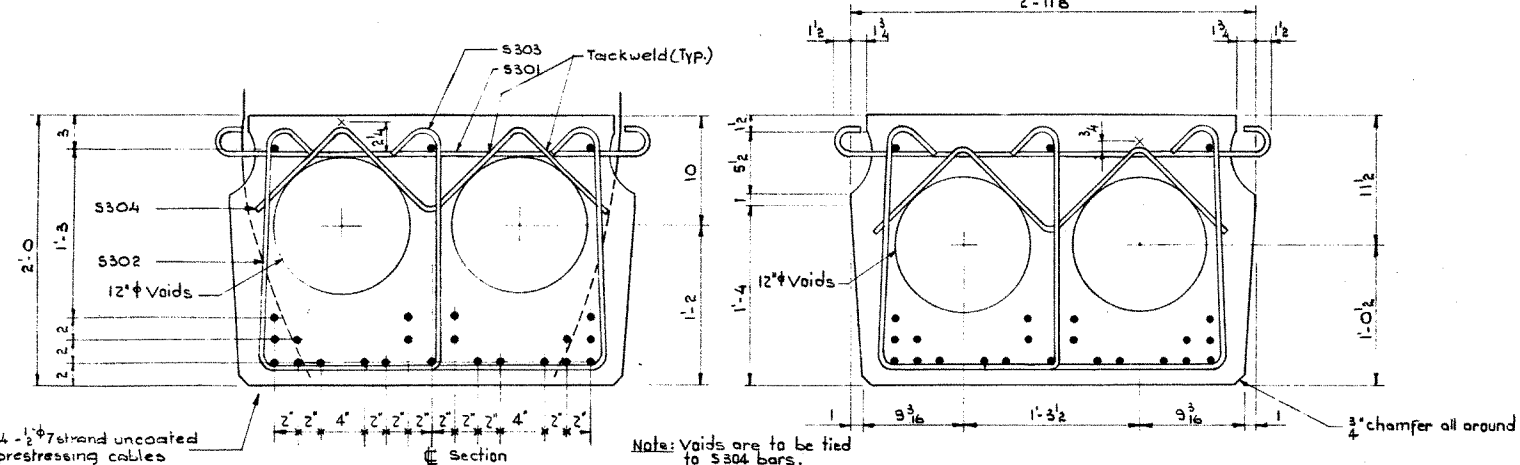
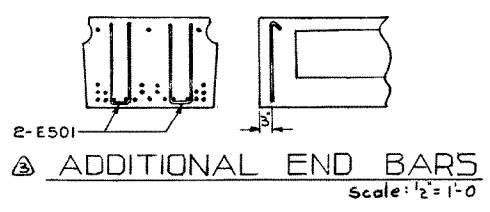
**DESIGN**  
 A.A.S.H.O. 1961 Specifications except allowable initial concrete stress = 285 p.s.i. in tension.

**Loading:** 3/5 of one wheel line of an H20-S16-44 truck plus full dead load plus 2" wearing surface.

**MATERIALS**  
 Concrete shall be of standard weight aggregate with a maximum size of 3/4". Minimum compressive strength shall be 5000 p.s.i. at 28 days. Air entrainment to be not less than 5%.

**FABRICATION**  
 Reinforcement: Diameters of all bends shall conform to the recommended sizes and all hooks, unless otherwise noted shall conform to the recommended sizes detailed in the A.C.I. Manual of Standard Practice for Detailing Reinforced Concrete Structures.  
 Prestressing steel: Initial tensioning load = 25.2 k/Cable  
 Design Load = 20.16k/Cable  
 Concrete must attain 4,500 p.s.i. compressive strength before the prestressing force is transferred.  
 Anchor bolt assemblies are to be cast in stringer at spacings as req'd. Units are to conform to the requirements of the Bridge Branch Specifications for Prestressed Concrete Bridge Units.

**ERECTION**  
 Lifting force at each hook must be vertical at all times.  
 Stringer surface must be level at all times.



**SUPERSEDED**

PRESTRESSED CONCRETE  
 50 FT SPAN  
 TYPE M STRINGER

GOVERNMENT OF THE PROVINCE OF ALBERTA  
 DEPARTMENT OF HIGHWAYS  
 BRIDGE BRANCH, EDMONTON

NO.	DATE	DESCRIPTION	BY
1	Mar 24/64	General notes	B.S.F.
2	NOV 26/63	Lifting hooks	REP.
3	Oct 17/63	Revision to skewed S301 bars	R.Ch.
4	Oct 15/63	End bars added	R.Ch.
5	Sept 18/63	Notes & finishes revised	B.S.F.
6	May 28/63	Notes	R.Ch.

FILE NO. \_\_\_\_\_ HWY. NO. \_\_\_\_\_ DWG. NO. 5-796  
 LOCATION \_\_\_\_\_ SCALE Shown \_\_\_\_\_  
 STREAM \_\_\_\_\_ SHEET \_\_\_\_\_ OF \_\_\_\_\_