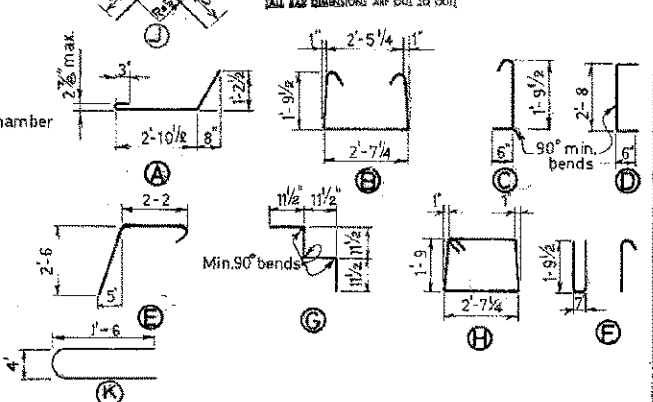


BAR LIST

Mark	Size	No	Type	Length	Weight
CS 301	3	80	A	4'-8"	138
S302	3	59	B	6'-10"	152
S303	3	59	C	2'-7"	57
S304	3	26	G	3'-10"	37
S305	3	4	D	3'-8"	6
S401	4	2	H	9'-4"	12
S402	4	6	Str.	28'-6"	102
S501	5	40	E	5'-2"	216
E501	5	4	F	5'-2"	22
S306	3	20	J	1'-9"	13
S403	4	6	K	3'-0"	11
Total =					765 lbs

BAR TYPES

ALL BAR DIMENSIONS ARE IN INCHES



GENERAL NOTES

DESIGN:
A.A.S.T.M. 1961 specifications except allowable initial concrete stress = 285 p.s.i. in tension.
Loading: 3/5 of one wheel line of an H20-S16-44 truck plus full dead load plus 2" wearing surface.

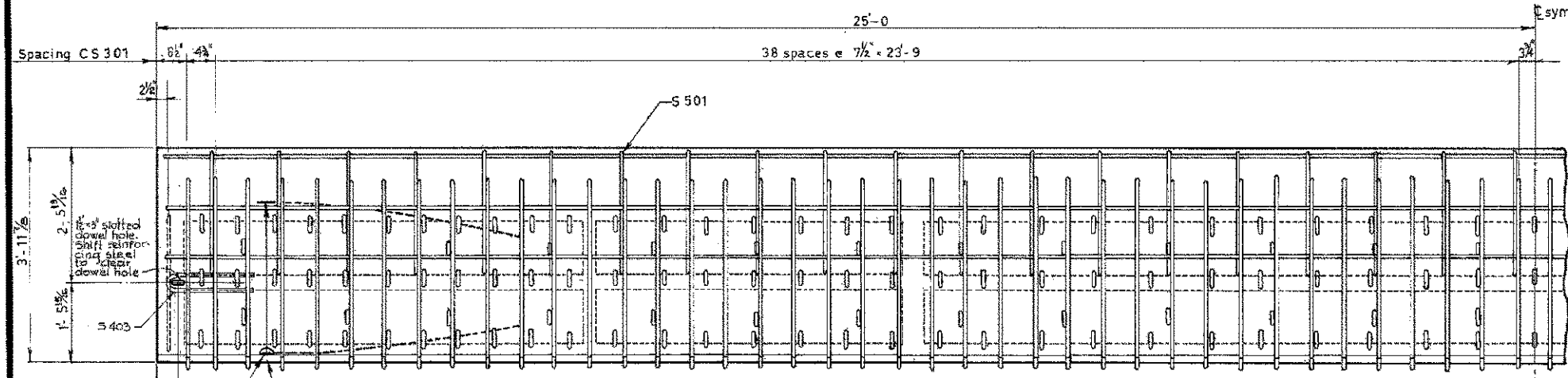
MATERIALS:
Concrete shall be of standard weight aggregate with a maximum size of 3/4". Minimum compressive strength shall be 5000 p.s.i. at 28 days. Air entrainment shall be not less than 5%.

FABRICATION:
Reinforcement: Diameters of all bends and details of all hooks unless otherwise noted shall conform to the recommended sizes detailed in the A.C.I. Manual of Standard Practice for Detailing Reinforced Concrete Structures.

Prestressing Steel: Initial tensioning load = 25.2 k/strand
Design load = 20.16 k/strand
Concrete must attain 4,000 p.s.i. compressive strength before the prestressing force is transferred.

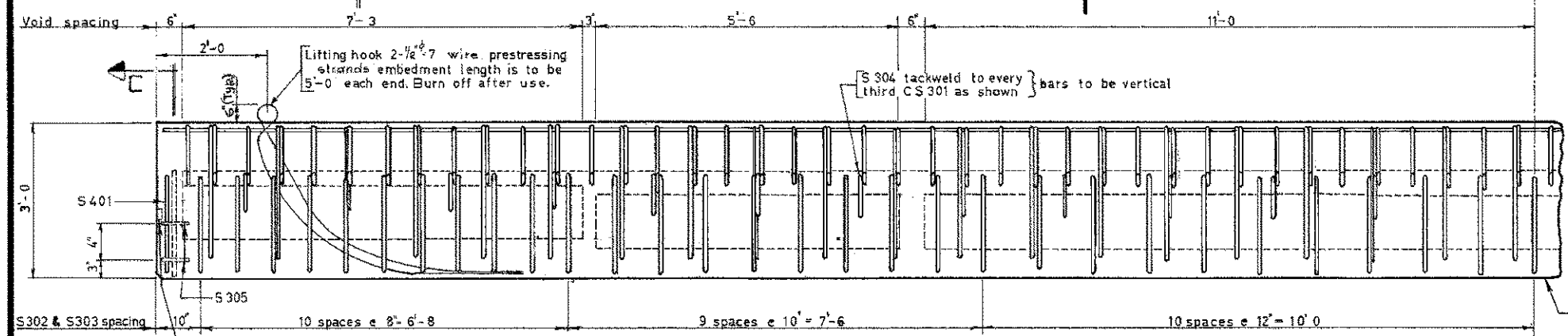
Anchor bolt assemblies are to be cast in stringer at spacings as required.
Units are to conform to the requirements of the Bridge Branch Specifications for Prestressed Concrete Bridge Units. The surface of grout keys shall be sandblasted, if and blockouts are called for their surfaces shall be sandblasted.

ERECTION:
Lifting force at each hook must be not more than 35° from the vertical line at all times. Stringer surface must be level at all times.



PLAN

Scale 3/4" = 1'-0"

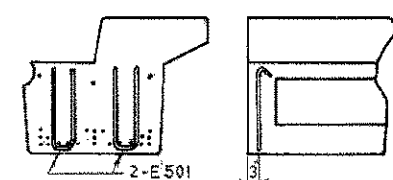


ELEVATION

Scale 3/4" = 1'-0"

NOTE: Bars similar to square ended stringers but length & spacing to suit skew & dowel hole.

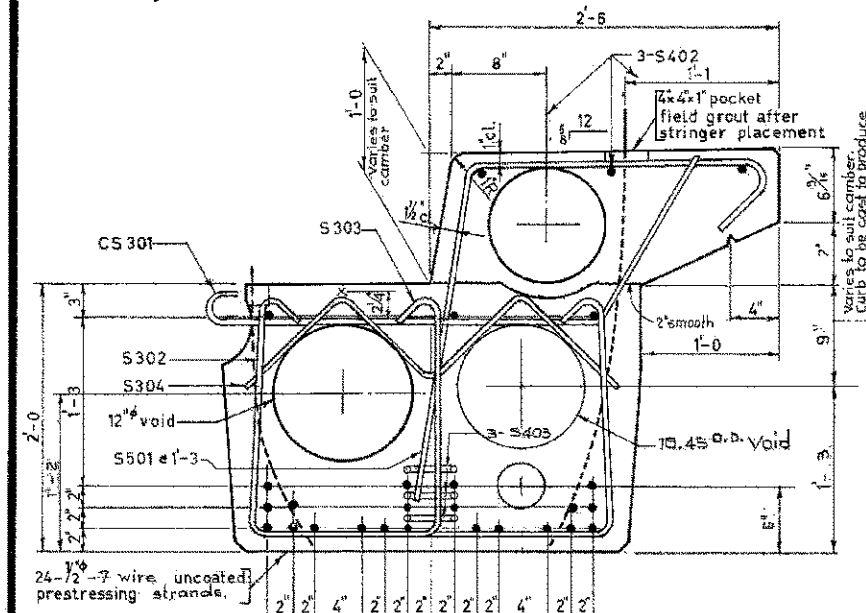
SKewed END STEEL



ADDITIONAL END BARS

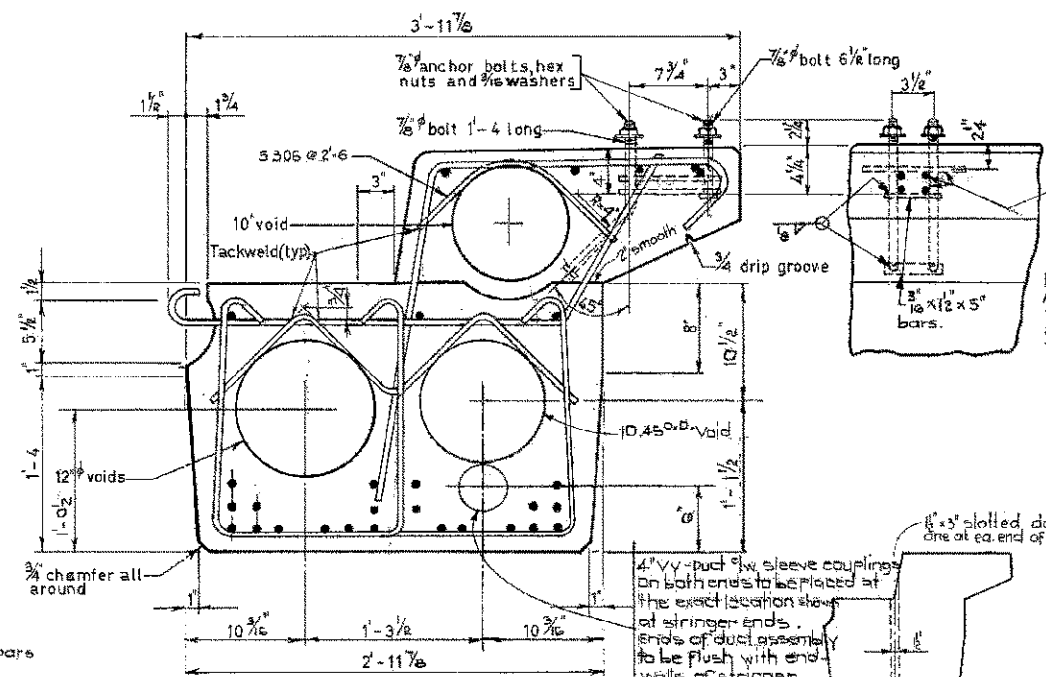
Scale: 1/2" = 1'-0"

Fabricators name, year of manufacture and serial no of unit to be cast into bottom of stringer in Z' letters.



SECTION A—A

Scale 1/2" = 1'-0"

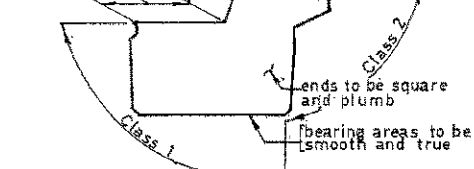


SECTION B—B

SECTION C—C

NOTE:
Anchor bolt assemblies are to be hot dipped galvanized after fabrication in accordance with A.S.T.M. Spec. A-153.

STRINGER FINISHES



**SUPERSEDED
DRAWING IN USE
FROM OCT. 15/70 IS
A PHOTOGRAPH OF
TRACING.**

**PRESTRESSED CONCRETE
50FT. SPAN
TYPE "M" CURB STRINGER**

GOVERNMENT OF THE PROVINCE OF ALBERTA
DEPARTMENT OF HIGHWAYS
BRIDGE BRANCH, EDMONTON

NO.	DATE	DESCRIPTION	BY
		Redrawn	S.L.
REVISIONS			

FILE NO.	HWY. NO.	DWG. NO.
LOCATION	SCALE	5-797-70
STREAM	SHEET	OF

DESIGNED BY D.H. Quapp 1962
DATE August 1962
CHECKED BY R. Eleftheras 1962
DATE August 1962