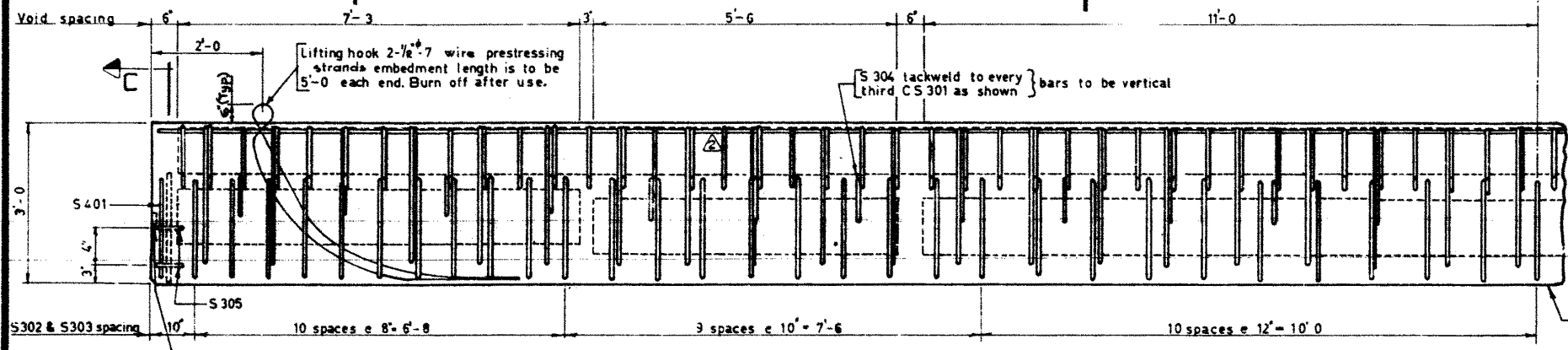
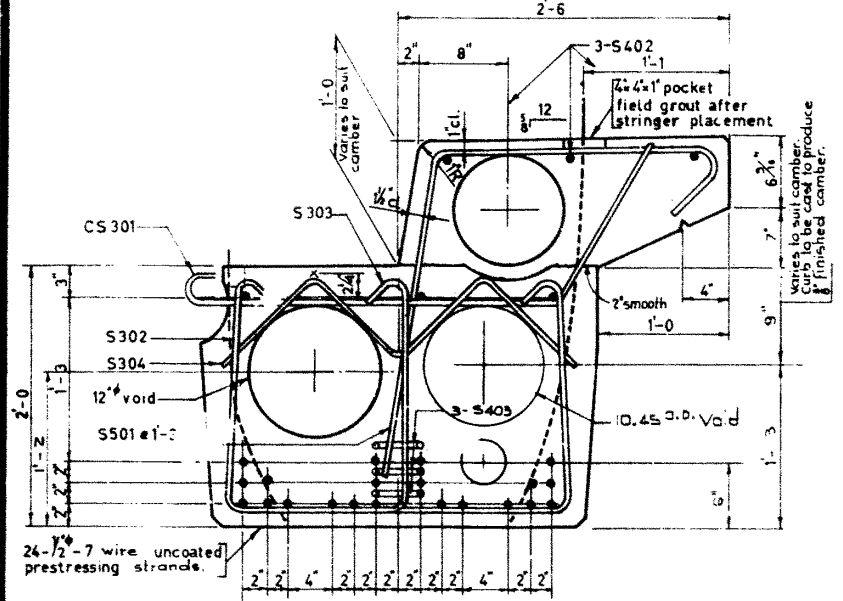


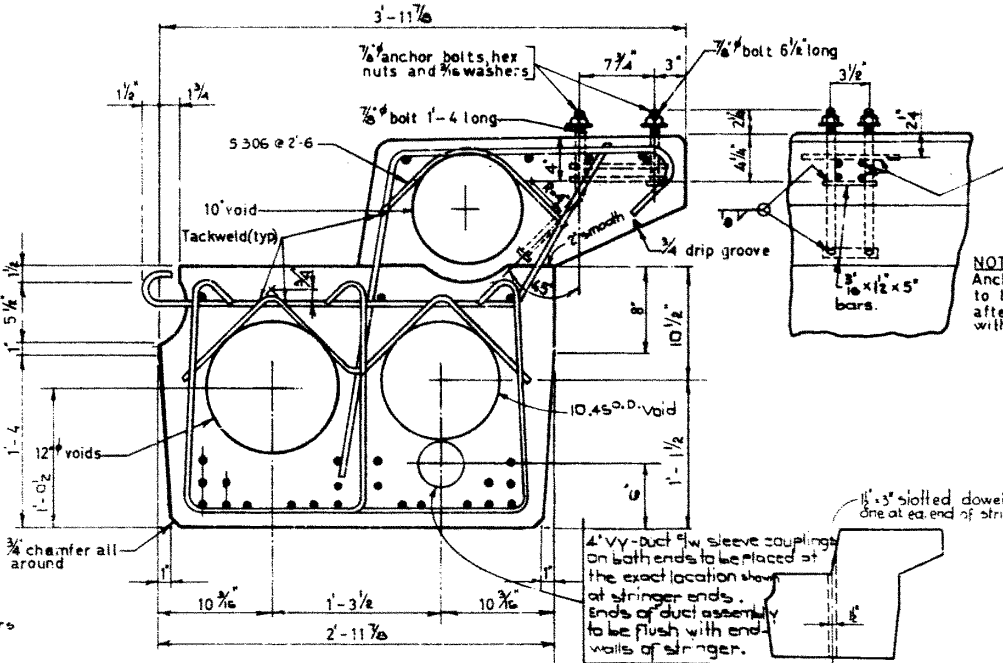
PLAN  
Scale 3/4" = 1'-0"



ELEVATION  
Scale 3/4" = 1'-0"



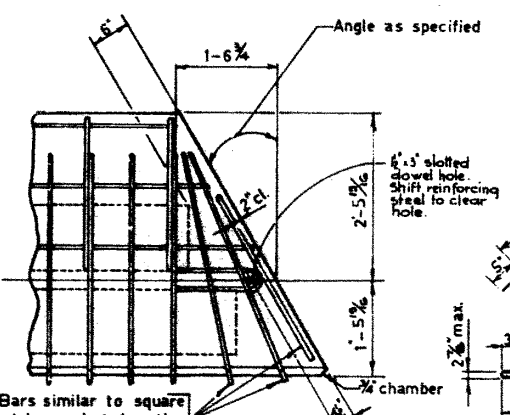
SECTION A—A  
Scale 1/2" = 1'-0"



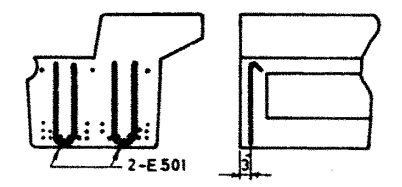
SECTION B—B

SECTION C—C

Asym. except for bar skew



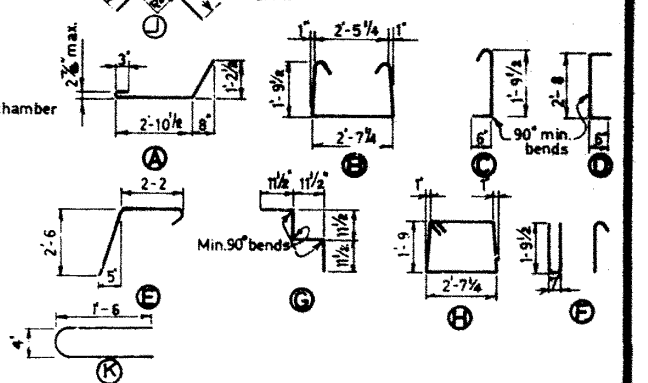
SKEWED END STEEL



ADDITIONAL END BARS  
Scale: 1/2" = 1'-0"

BAR LIST					
Mark	Size	No	Type	Length	Weight
CS 301	3	80	A	4'-8"	138
S 302	3	59	B	6'-10"	152
S 303	3	59	C	2'-7"	97
S 304	3	26	G	3'-10"	37
S 305	3	4	D	3'-8"	6
S 401	4	2	H	9'-4"	12
S 402	4	6	Str.	2'-6"	102
S 501	5	40	E	5'-2"	216
S 501	5	4	F	5'-2"	22
S 306	3	20	J	1'-9"	13
S 403	4	6	K	3'-2"	13
Total:					766 lbs.

BAR TYPES



GENERAL NOTES

DESIGN: A.A.S.H.O. 1961 Specifications except allowable initial concrete stress = 285 p.s.i. in tension. Loading: 3/5 of one wheel line of an H20-S16-44 truck plus full dead load plus 2" wearing surface.

MATERIALS: Concrete shall be of standard weight aggregate with a maximum size of 3/4". Minimum compressive strength shall be 5000 p.s.i. at 28 days. Air entrainment shall be not less than 5%.

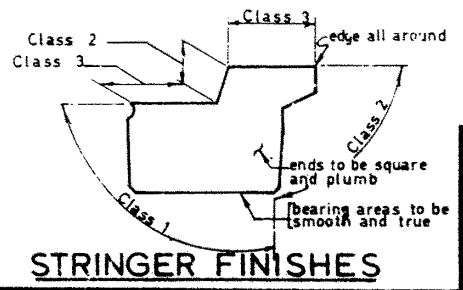
FABRICATION: Reinforcement: Diameters of all bends and details of all hooks unless otherwise noted shall conform to the recommended sizes detailed in the A.C.I. Manual of Standard Practice for Detailing Reinforced Concrete Structures. Prestressing Steel: Initial tensioning load = 25.2 k/Strand. Design load = 20.16 k/Strand. Concrete must attain 4,000 p.s.i. compressive strength before the prestressing force is transferred. Anchor bolt assemblies are to be cast in stringer as required.

Units are to conform to the requirements of the Bridge Branch Specifications for Prestressed Concrete Bridge Units. The surface of grout keys shall be sandblasted. If end blockouts are called for their surfaces shall be sandblasted.

ERECTION: Lifting force at each hook must be not more than 35° from the vertical line at all times. Stringer surface must be level at all times.

**SUPERSEDED**

APPROVED: [Signature] 12/29/70 (3A)



STRINGER FINISHES

NO.	DATE	DESCRIPTION	BY
1	8/2/62	Original design	D.H. Quapp
2	8/2/62	Revised	R.E. Lennox

PRESTRESSED CONCRETE  
50FT. SPAN  
TYPE "M" CURB STRINGER

GOVERNMENT OF THE PROVINCE OF ALBERTA  
DEPARTMENT OF HIGHWAYS  
BRIDGE BRANCH, EDMONTON

FILE NO. \_\_\_\_\_ HWY. NO. \_\_\_\_\_ BRIDGE NO. \_\_\_\_\_  
LOCATION \_\_\_\_\_ SCALE \_\_\_\_\_ SHOWN \_\_\_\_\_  
5-797-70

DESIGNED BY D.H. Quapp 1962  
CHECKED BY R.E. Lennox 1962