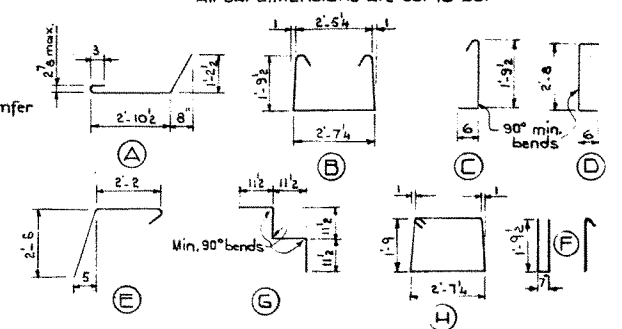


BAR LIST

Mark	Size	No.	Type	Length	Weight
C5301	3	80	A	4'-8"	138
S302	3	59	B	6'-10"	152
S303	3	59	C	2'-7"	57
S304	3	26	E	3'-10"	37
S305	3	4	D	3'-8"	6
S401	4	2	H	9'-4"	12
S402	4	6	G	25'-6"	102
S501	5	40	E	5'-2"	216
E501	5	4	F	5'-2"	22

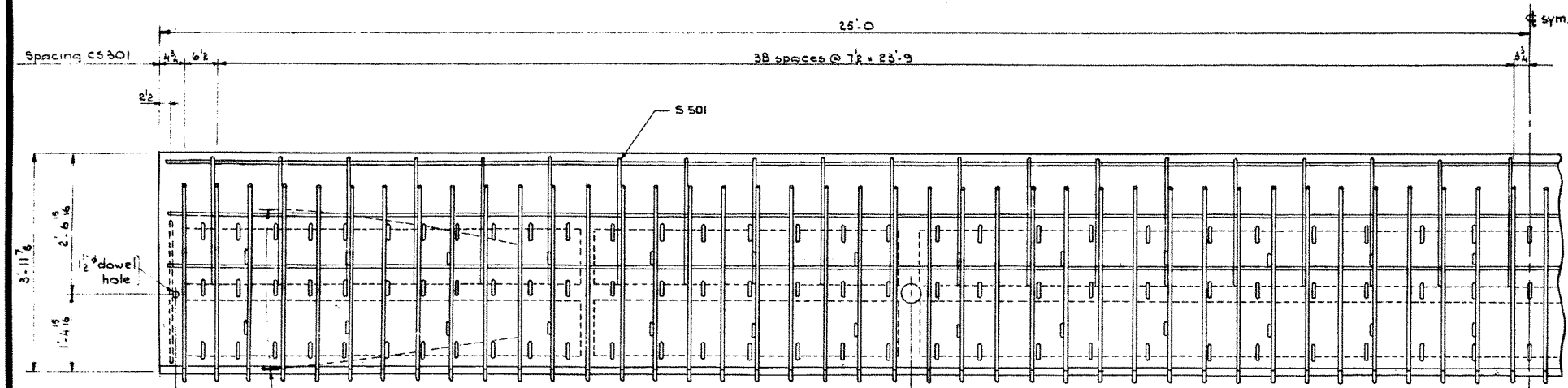
Total 742 lbs.

BAR TYPES N.T.S.
All bar dimensions are out to out

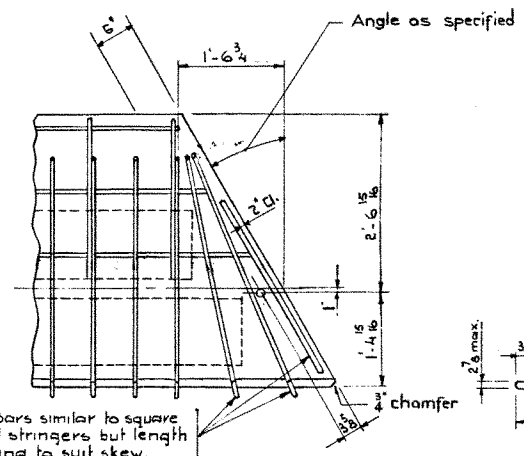


GENERAL NOTES

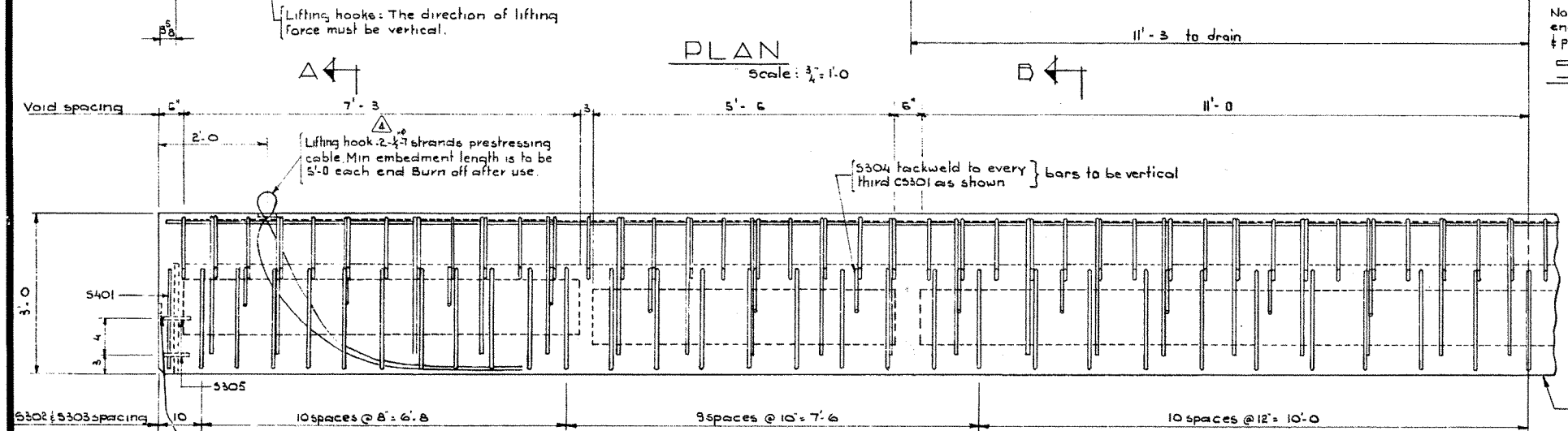
- DESIGN:** A.A.S.H.O. 1961 Specifications except allowable initial concrete stress = 285 p.s.i. in tension.
- Loading:** 3/5 of one wheel line of an H20-S16-44 truck plus full dead load plus 2" wearing surface.
- MATERIALS:** Concrete shall be of standard weight aggregate with a maximum size of 1". Minimum compressive strength shall be 5000 p.s.i. at 28 days. Air entrainment to be not less than 5%.
- FABRICATION:** Reinforcement: Diameters of all bends shall conform to the recommended sizes and all hooks, unless otherwise noted shall conform to the recommended sizes detailed in the A.C.I. Manual of Standard Practice for Detailing Reinforced Concrete Structures. Prestressing steel: Initial tensioning load = 25.2 k/cable. Design load = 20.16 k/cable. Concrete must attain 4,500 p.s.i. compressive strength before the prestressing force is transferred. Anchor bolt assemblies are to be cast in stringer at spacings as req'd. Units are to conform to the requirements of the Bridge Branch Specifications for Prestressed Concrete Bridge Units.
- ERECTION:** Lifting force at each hook must be vertical at all times. Stringer surface must be level at all times.



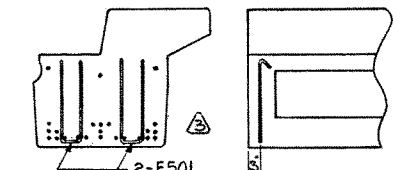
PLAN
Scale: 3/4" = 1'-0"



SKewed END STEEL

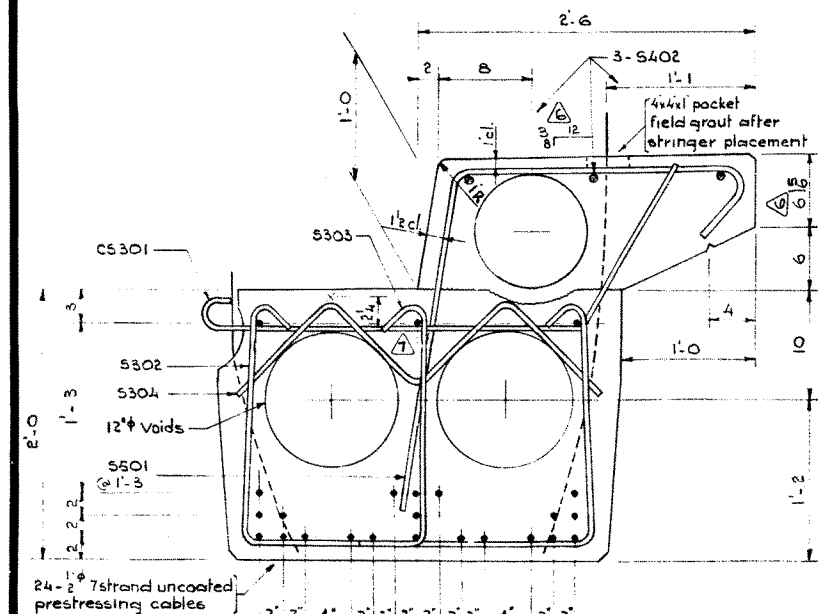


ELEVATION
Scale: 3/4" = 1'-0"

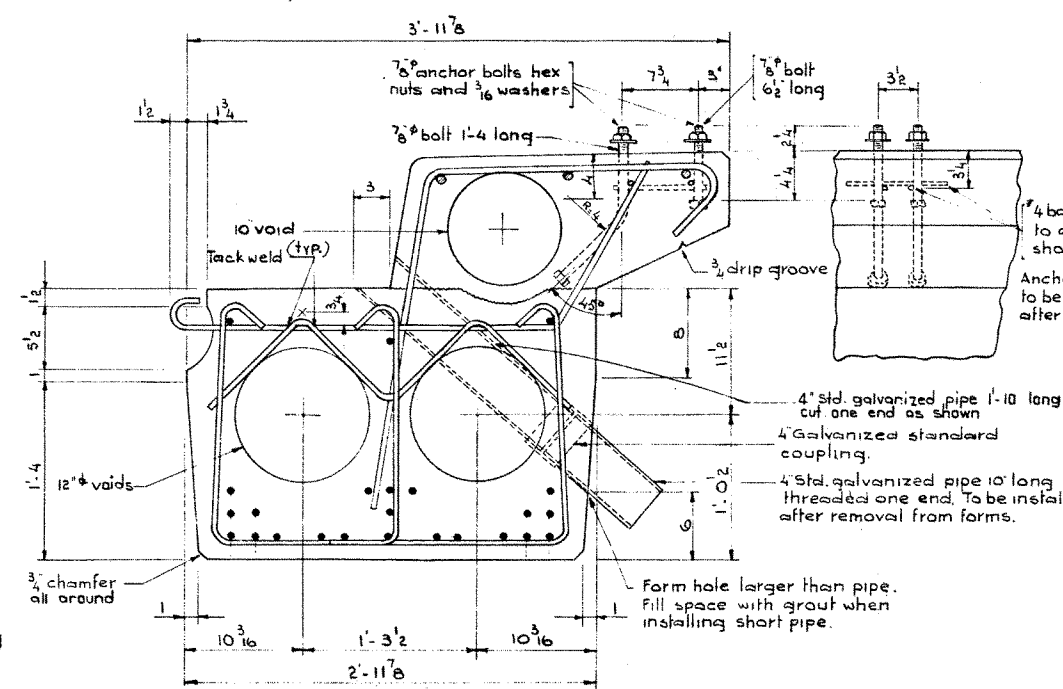


ADDITIONAL END BARS
Scale: 1/2" = 1'-0"

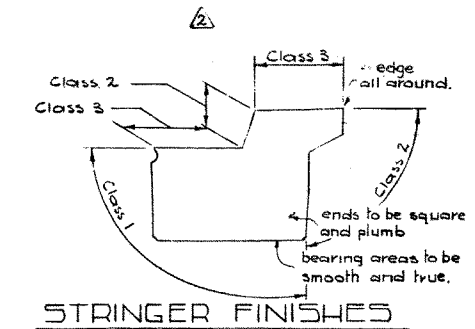
Fabricators name, year of manufacture & serial no. of unit to be cast into bottom of stringer in 2" letters.



SECTION A-A
Scale: 1/2" = 1'-0"



SECTION B-B
Scale: 1/2" = 1'-0"



STRINGER FINISHES

SUPERSEDED

**PRESTRESSED CONCRETE
50 FT SPAN
TYPE M CURB STRINGER**

GOVERNMENT OF THE PROVINCE OF ALBERTA
DEPARTMENT OF HIGHWAYS
BRIDGE BRANCH, EDMONTON

NO.	DATE	DESCRIPTION	BY
1	Aug 22/66	Moved top centre bar up 2"	V.B.
2	Oct 20/66	Curb slope	DQ
3	Mar 24/64	General notes	B.S.P.

NO.	DATE	DESCRIPTION	BY
4	Nov 20/63	Lifting hooks	REB.
5	Oct 15/63	End bars added	R.C.H.
6	Sept 18/63	Notes & finishes revised	B.S.P.
7	May 28/63	Notes	R.C.H.

FILE NO.	HWY. NO.	DWG. NO.
LOCATION	SCALE Shown	5-797
STREAM	SHEET	OF

DESIGNED BY: G.M. GURPP
DATE: Aug 1961
DETAILED BY: R. Ellenhaus
DATE: Aug 1961
CHECKED BY: _____
DATE: _____