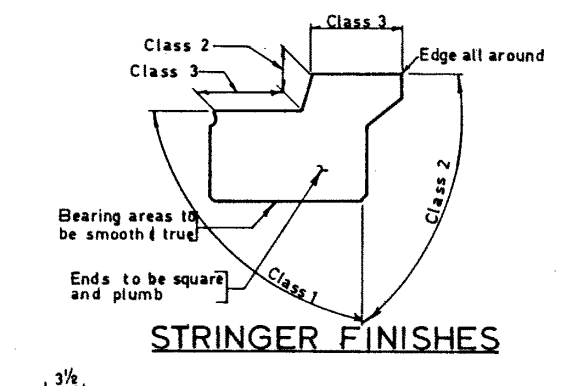
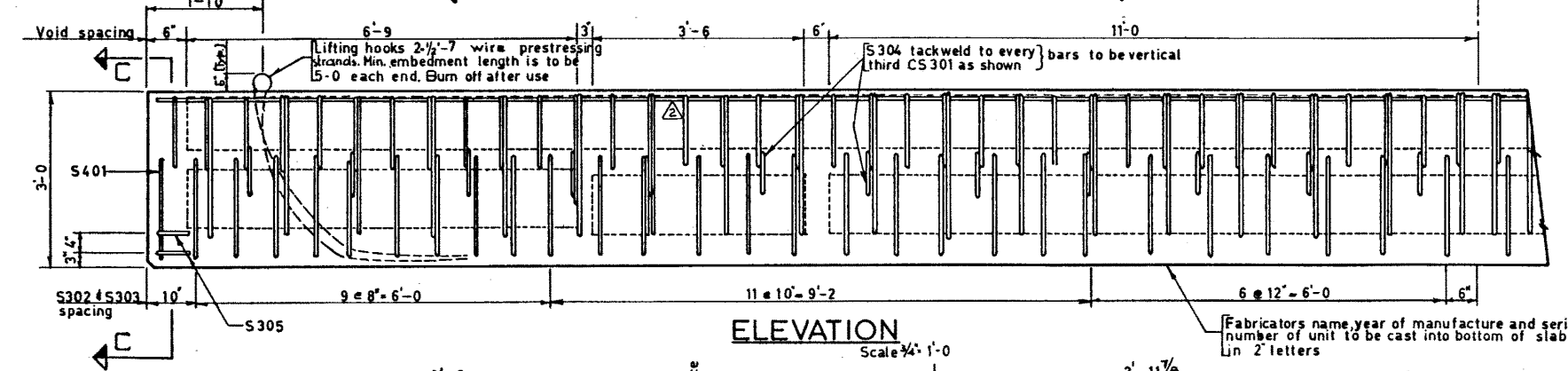
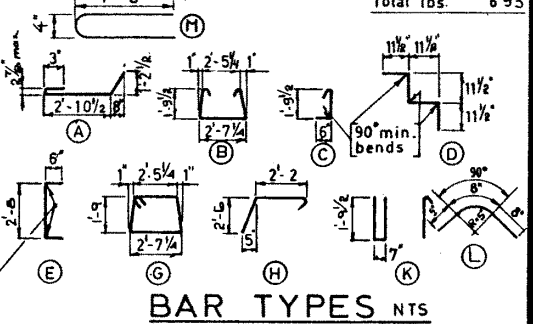
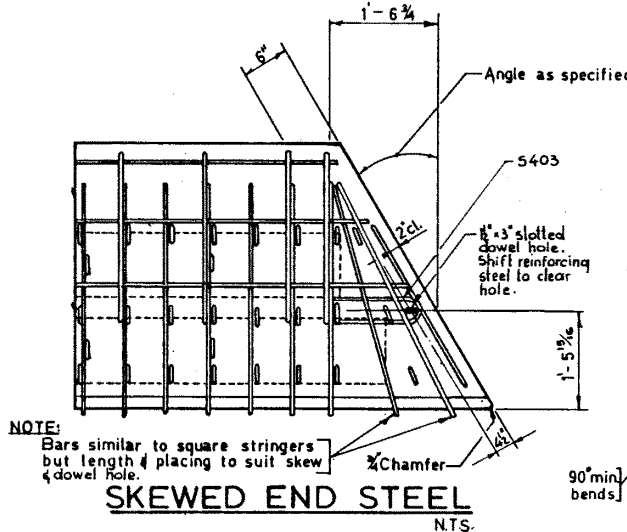
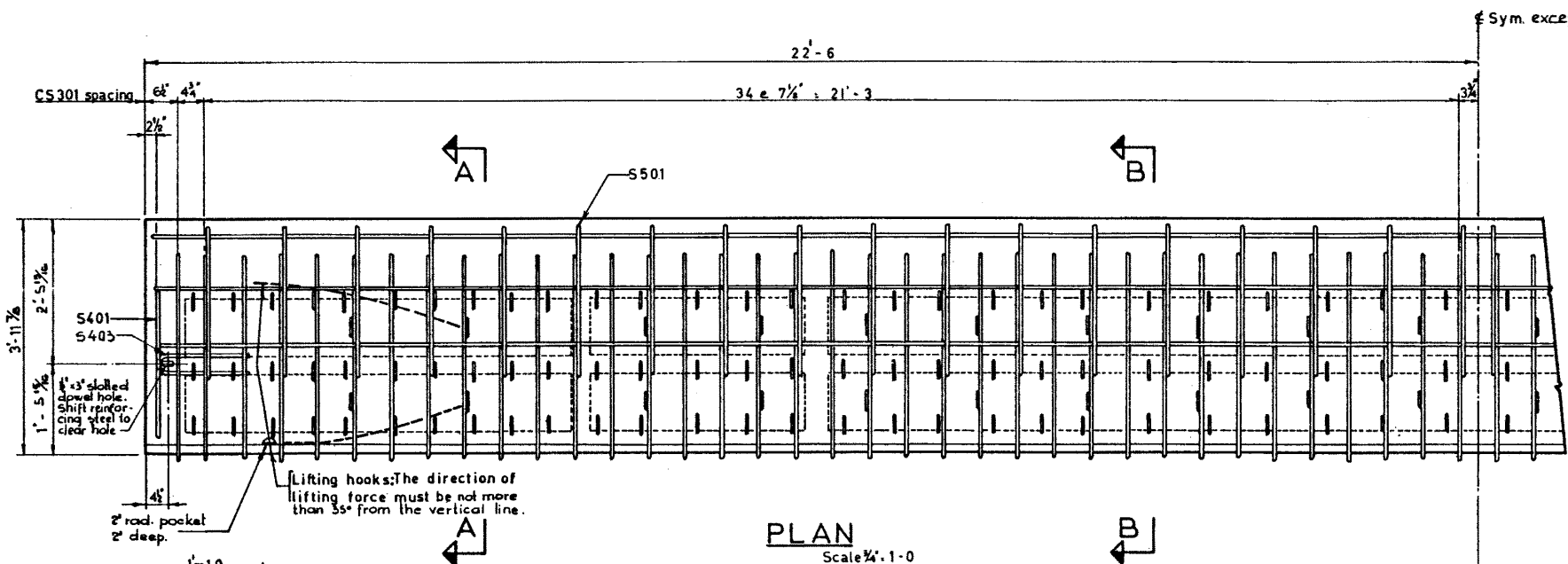


DESIGNED BY D.H. QUAPP DATE AUG. 1962
 CHECKED BY L. KOHLMANN DATE AUG. 1962

BAR LIST

Mark	Size	No	Type	Length	Weight
CS 301	3	72	A	4'-7"	124
S 302	3	54	B	6'-10"	139
S 303	3	54	C	2'-7"	52
S 304	3	24	D	3'-10"	35
S 305	3	4	E	3'-8"	6
S 401	4	2	G	9'-4"	12
S 402	4	6	Str	23'-0"	92
S 501	5	36	H	5'-2"	194
E 401	4	4	K	5'-2"	14
S 306	3	18	L	1'-9"	12
S 403	4	6	M	3'-2"	13
Total lbs.					693



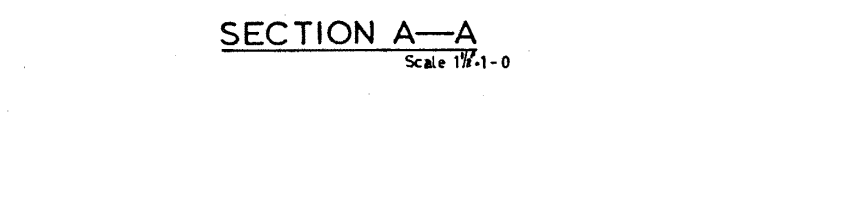
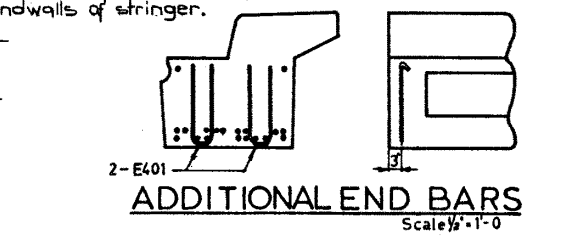
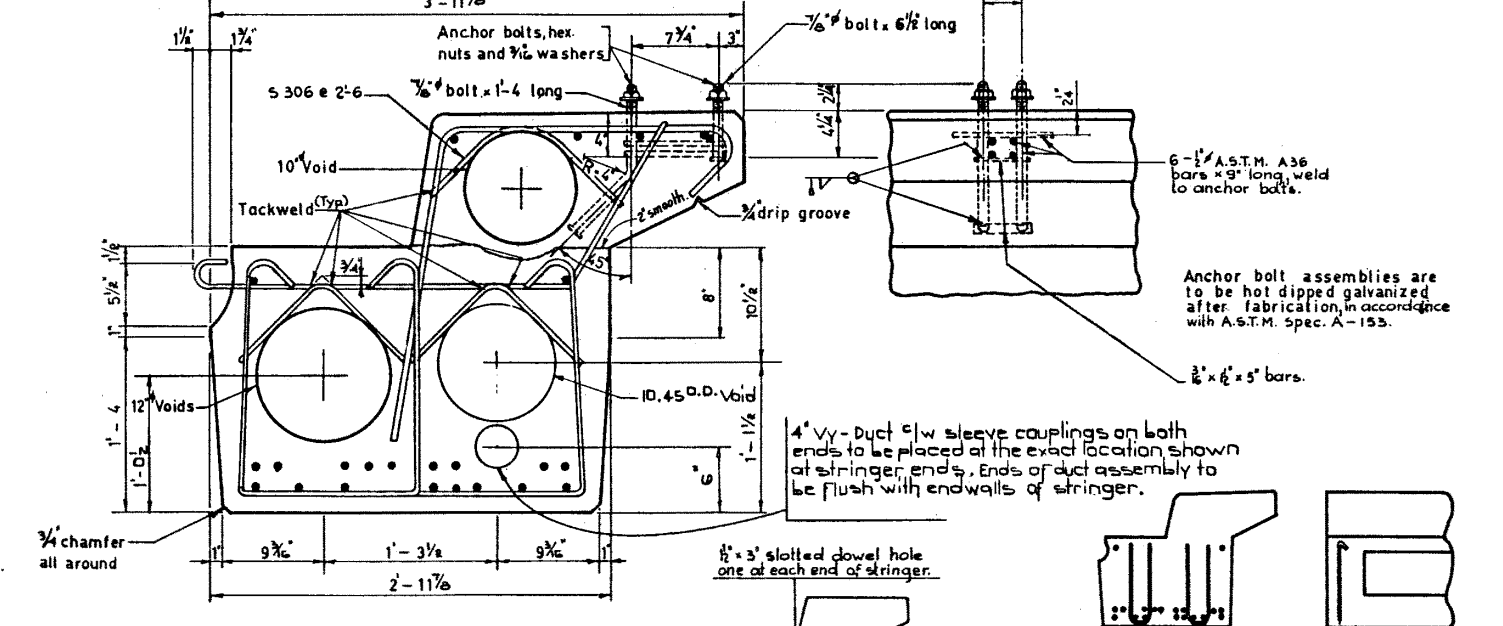
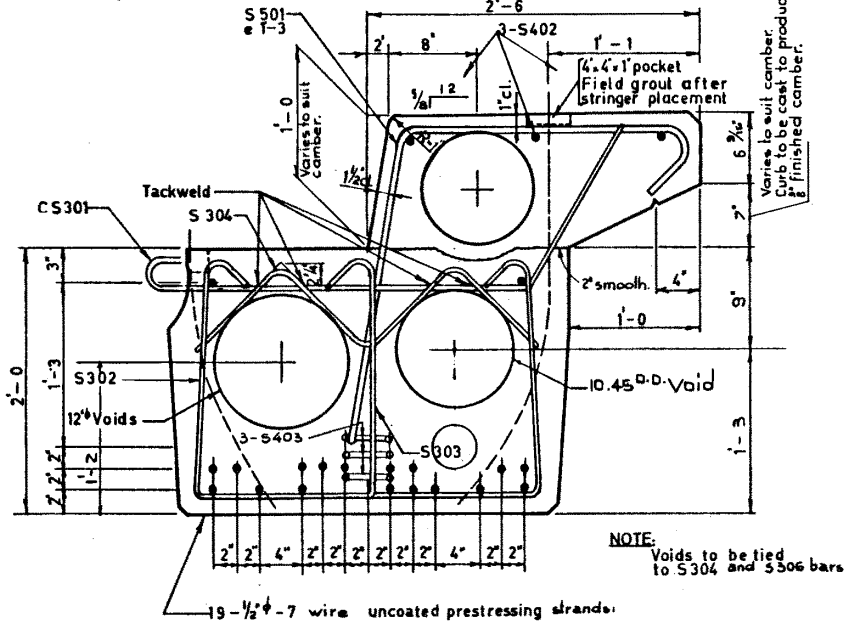
GENERAL NOTES

DESIGN
A.A.S.H.O. 1961 Specifications except allowable initial concrete stress = 285 p.s.i. in tension.
Loading: 3/5 of one wheel line of an H20-516-44 truck plus full dead load plus 2" wearing surface.

MATERIALS
Concrete shall be of standard weight aggregate with a maximum size of 3/4". Minimum compressive strength shall be 5000 p.s.i. at 28 days. Air entrainment shall be not less than 5%.

FABRICATION
Reinforcement: Diameters of all bends and details of all hooks unless otherwise noted shall conform to the recommended sizes detailed in the A.C.I. Manual of Standard Practice for Detailing Reinforced Concrete Structures.
Prestressing Steel: Initial tensioning load = 25.2 k/strand
Design load = 20.16 k/strand
Concrete must attain 4,000 p.s.i. compressive strength before the prestressing force is transferred.
Anchor bolt assemblies are to be cast in stringer at spacings as required.
Units are to conform to the requirements of the Bridge Branch Specifications for Prestressed Concrete Bridge Units.
The surface of grout keys shall be sandblasted. If end blockouts are called for their surfaces shall be sandblasted.

ERECTION
Lifting force at each hook must be not more than 35° from the vertical line at all times. Stringer surface must be level at all times.



REVISIONS

NO.	DATE	DESCRIPTION	BY
1	Aug 27, 1971	Curb void view corrected	T.B.
2	Oct 28, 1970	Redrawn	S.L.

SUPERSEDED

APPROVED *[Signature]*
 BRIDGE ENGINEER
 OCT 21/70

SUPERSEDED BY 5-799-73

PRESTRESSED CONCRETE
45 FT. SPAN
TYPE "M" CURB STRINGER

GOVERNMENT OF THE PROVINCE OF ALBERTA
 DEPARTMENT OF HIGHWAYS
 BRIDGE BRANCH, EDMONTON

FILE NO. _____ HWY. NO. _____ DWG. NO. _____
 LOCATION _____ SCALE as shown _____ 5-799-70
 STREAM _____ SHEET _____ OF _____