

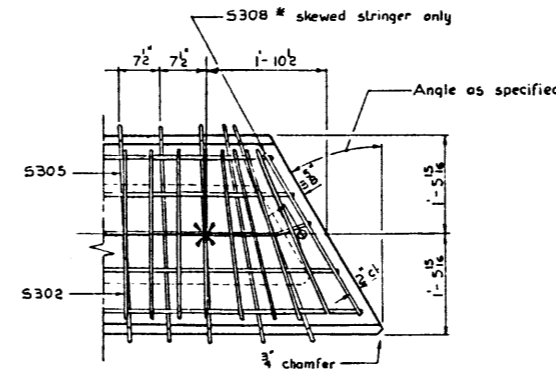
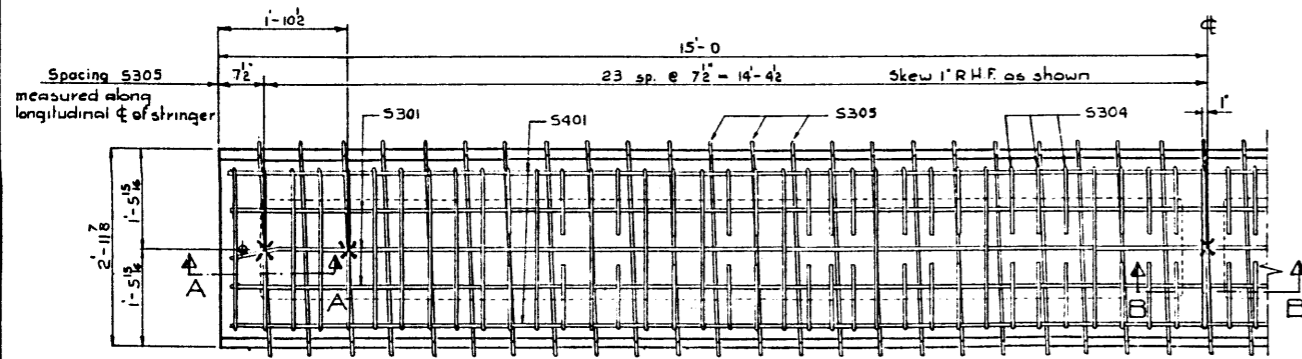
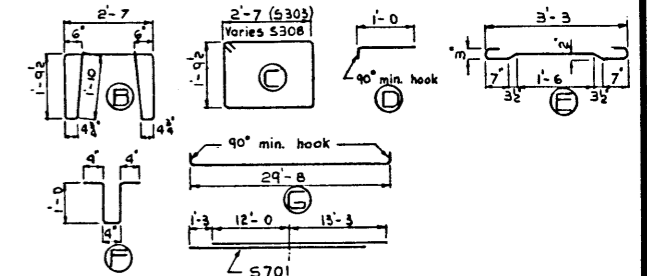
BAR LIST

Mark	Size	Number	Type	Length	Weight
S301	3	3	str	29'-8"	33
S302		33	B	10'-7"	131
S303		4	C	9'-3"	14
S304		72	D	1'-3"	34
S305		47	E	4'-1"	72
S306		2	F	3'-0"	2
S307	3	66	str	5'	10
S401	4	2	str	29'-8"	40
S501	5	2	str	2'-7"	5
S801	8	4	6	30'-9"	328
S701	7	4	str	25'-3"	206
* S308	3	2	C		

* skewed stringer only Total 875 lbs.

BAR TYPES

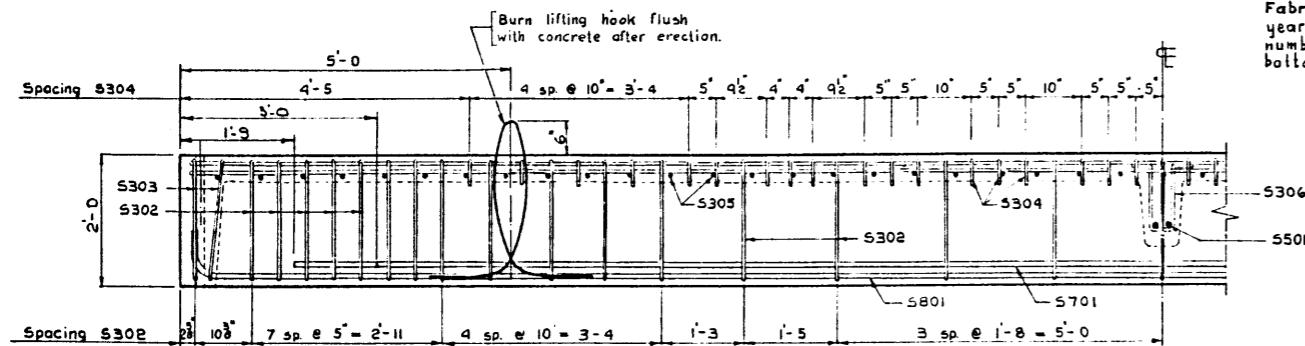
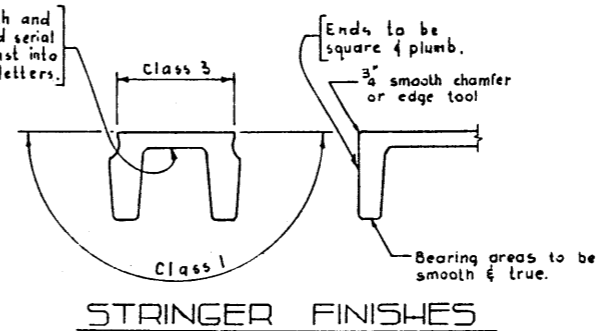
(All bar dimensions are out to out)



NOTE
All other details to conform to those shown for square stringers. (On skewed stringers, the lifting hooks are to be placed 10'-0" from the mid-point of the unit.)

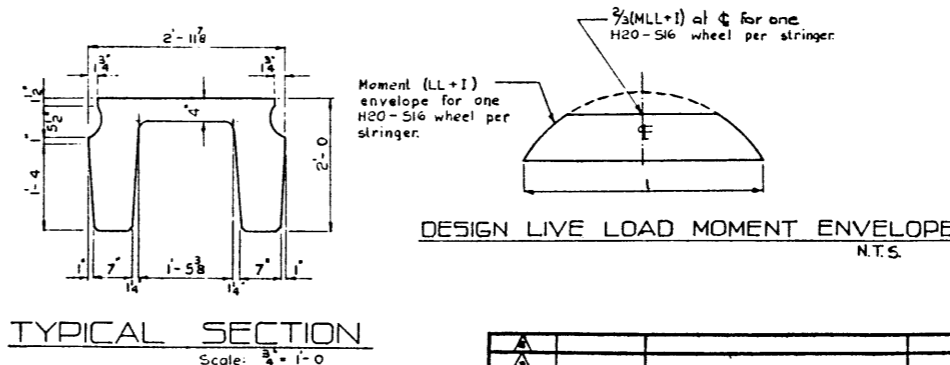
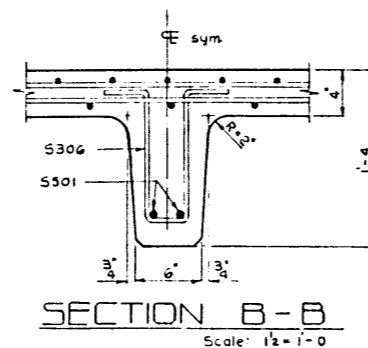
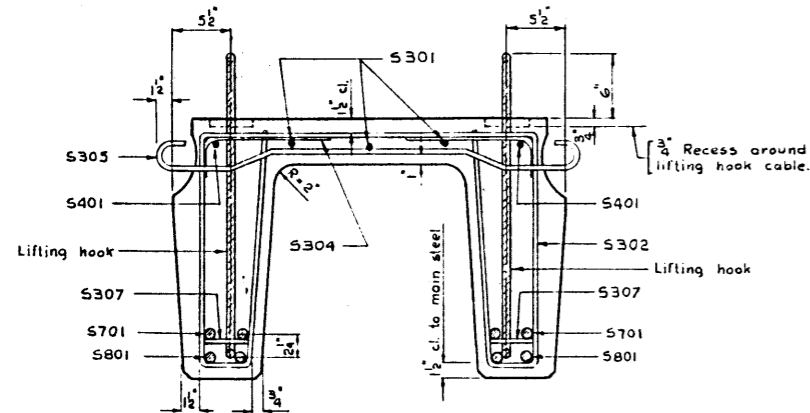
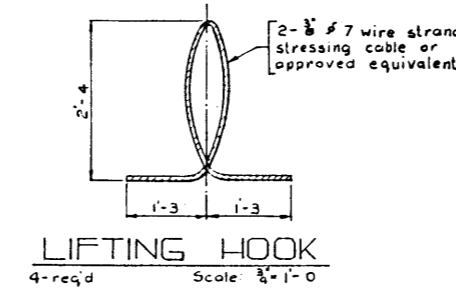
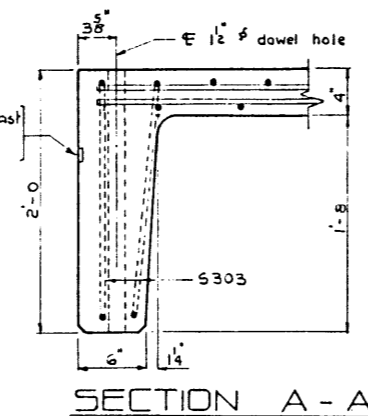
SKewed STRINGER
Scale: 3/4" = 1'-0"

Fabricator's name, month and year of manufacture and serial number of unit to be cast into bottom of the slab in 2" letters.



ELEVATION
Scale: 3/4" = 1'-0"

Serial number of unit to be cast in 2" high figures in end of stringer



GENERAL NOTES

DESIGN
Live Load - A.A.S.H.O. H20 - S16 modified as shown.
Dead Load - includes allowance for 2" wearing surface.
Concrete - to be standard weight aggregates with maximum aggregate size of 1/2 inch. Minimum 28 day compressive strength to be 4,000 p.s.i.

CONSTRUCTION
Entrained air shall be 5 1/2% ± 1%.
Diameters of all bends shall conform to the recommended minimums and all hooks, unless otherwise noted shall conform to the recommended sizes detailed in the A.C.I. Manual of Standard Practice for Detailing Reinforced Concrete Structures.
Each stringer shall have a cast chamfer of 1/4 inch.
All acute angles on skewed stringer shall have 1/2 inch chamfer.
Concrete shall attain at least 30% of the specified 28 day compressive strength before the units are stripped from the forms or lifted.
Lifting force at each hook is to be vertical at all times.
Units are to conform to the requirements of the Alberta Government Specifications for the Manufacture of Precast Concrete Bridge Units.

PRECAST CONCRETE STRINGER
TYPE E 30 FT.
LOADING H20-S16

GOVERNMENT OF THE PROVINCE OF ALBERTA
DEPARTMENT OF HIGHWAYS
BRIDGE BRANCH, EDMONTON

FILE NO. _____ HWY. NO. _____ DWG. NO. _____
LOCATION SCALE as shown 5-806
STREAM SHEET OF _____

NO.	DATE	DESCRIPTION	BY

REVISIONS

DESIGNED BY: _____ DATE: _____
 CHECKED BY: _____ DATE: _____
 DETAILED BY: Richard Chwalak DATE: October 1962