

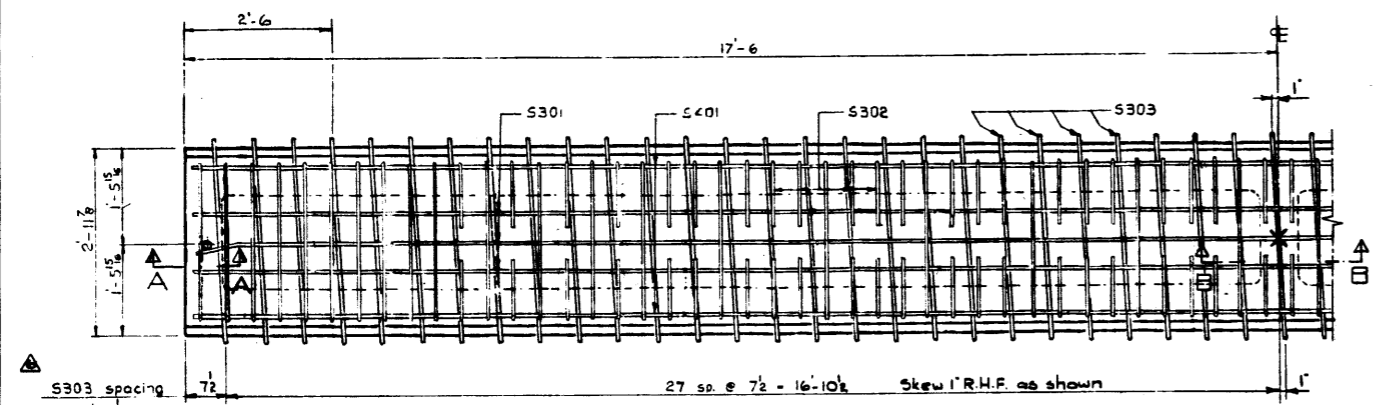
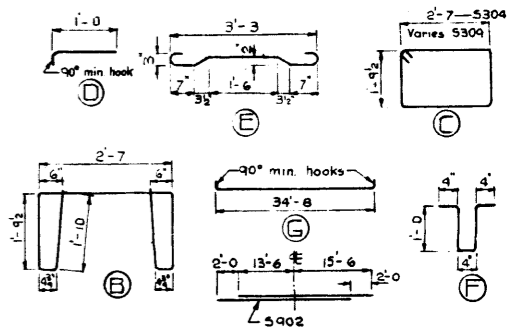
BAR LIST

Mark	Size	Number	Type	Length	Weight
S301	3	3	str.	34'-8"	39
S302	1	88	D	1'-3"	41
S303	56	E	4'-1"	84	
S304	4	C	9'-3"	14	
S305	36	B	10'-7"	143	
S307	1	2	F	3'-0"	2
S308	3	34	str.	5"	5
S401	4	2	str.	34'-8"	46
S401	5	2	str.	2'-7"	5
S401	9	4	G	35'-11"	488
S402	9	4	str.	29'-0"	394
S309	3	2	C		

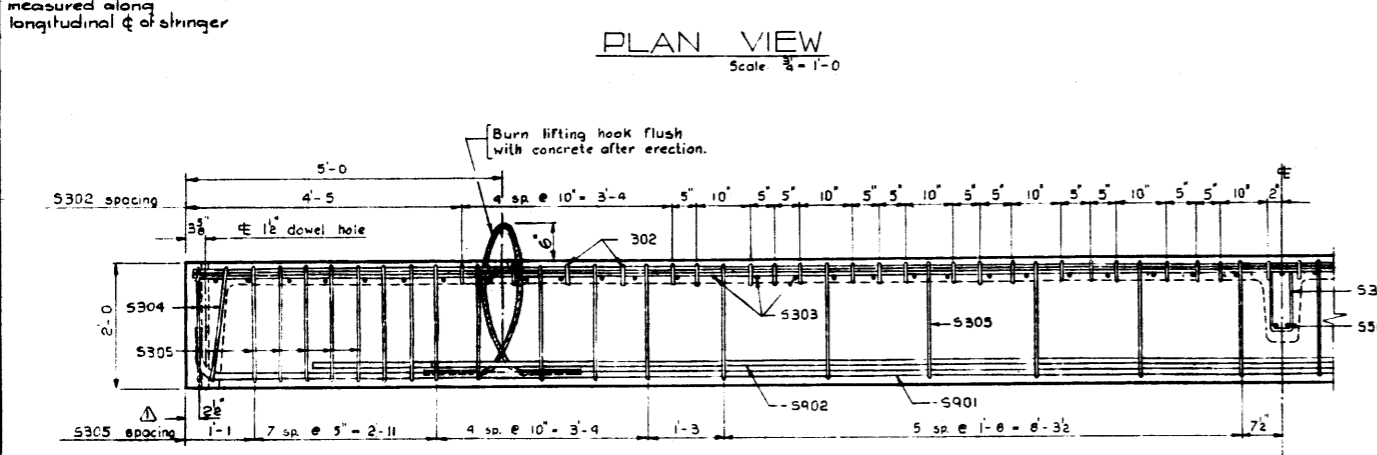
* skewed stringer only Total 1,261 lbs.

BAR TYPES

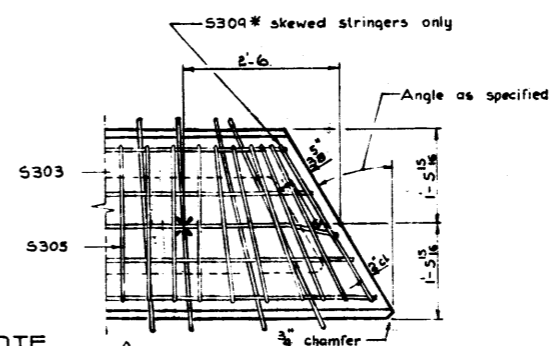
All bar dimensions are out to cut



PLAN VIEW
Scale: 3/4" = 1'-0"

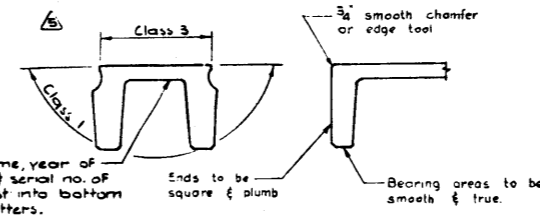


ELEVATION
Scale: 3/4" = 1'-0"



NOTE
All other details to conform to those shown for square stringers. (On skewed stringers, the lifting hooks are to be placed 12'-6" from the mid-point of the unit.)

SKewed STRINGER
Scale: 3/4" = 1'-0"

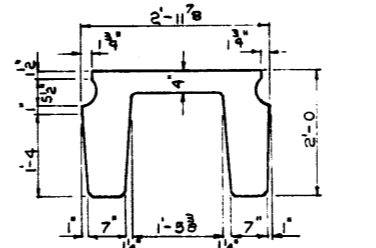


STRINGER FINISHES

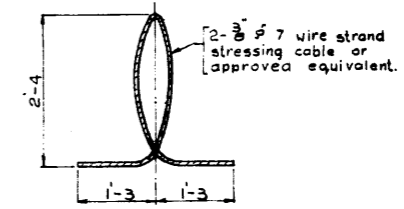
Fabricator's name, year of manufacture & serial no. of unit to be cast into bottom of slab in 2" letters.
Ends to be square & plumb
Bearing areas to be smooth & true.

GENERAL NOTES

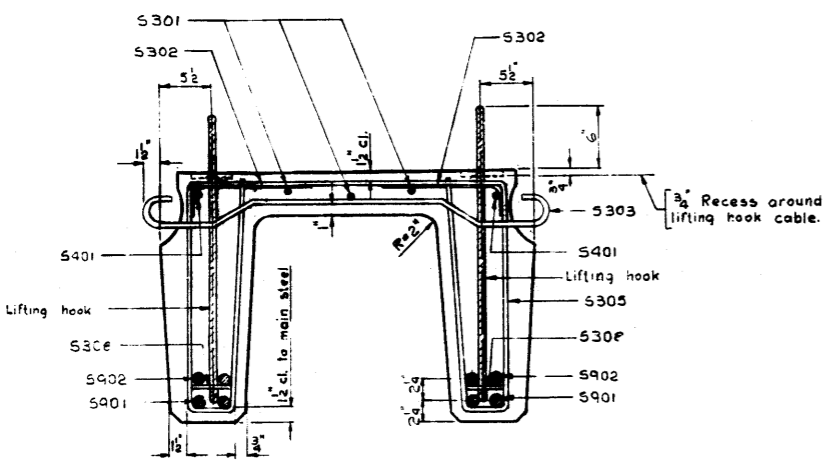
- DESIGN**
Live Load - A.A.S.H.O. H20 - S16 modified as shown.
Dead Load - includes allowance for 2" wearing surface.
Concrete - to be standard weight aggregates with maximum aggregate size of 1/2 inch. Minimum 28 day compressive strength to be 4000 p.s.i.
- CONSTRUCTION**
Entrained air shall be not less than 5%
Diameters of all bends shall conform to the recommended minimum and all hooks, unless otherwise noted shall conform to the recommended sizes detailed in the A.C.I. Manual of Standard Practice for Detailing Reinforced Concrete Structures.
Each stringer shall have a cast chamfer of 3/8 inch.
All acute angles on skewed stringers shall have 1/2 inch chamfer.
Concrete shall attain at least 30% of the specified 28 day compressive strength before the units are stripped from the forms or lifted.
Lifting force at each hook is to be vertical at all times.
Units are to conform to the requirements of the Alberta Government Specifications for the Manufacture of Precast Concrete Bridge Units.



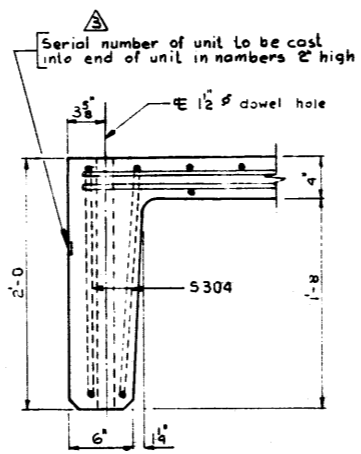
TYPICAL SECTION
Scale: 3/4" = 1'-0"



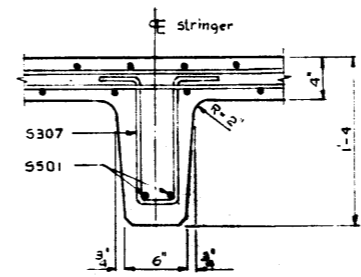
LIFTING HOOK
4- req'd Scale: 3/4" = 1'-0"



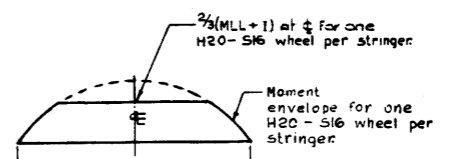
STRINGER SECTION
Scale: 1 1/2" = 1'-0"



SECTION A-A
Scale: 1 1/2" = 1'-0"



SECTION B-B
Scale: 1 1/2" = 1'-0"



DESIGN LIVE LOAD MOMENT ENVELOPE
N.T.S.

PRECAST CONCRETE STRINGER
TYPE E 35 FT
LOADING H20-S16

GOVERNMENT OF THE PROVINCE OF ALBERTA
DEPARTMENT OF HIGHWAYS
BRIDGE BRANCH, EDMONTON

NO.	DATE	DESCRIPTION	BY
6	Oct 17/63	S308 bars	R.E.
5	Sept 18/63	Notes & Finishes revised	B.S.F.
4	Sept 12/63	Notes revised	B.S.F.
3	May 20/63	Serial number	R.C.H.
2	April 1/63	General notes	R.E.
1	Jan 11/63	General Revision	R.C.H.

FILE NO. _____ HWY. NO. _____ DWG. NO. 5-808
LOCATION _____ SCALE AS SHOWN
SHEET _____ OF _____

DESIGNED BY _____
DATE August 1962
DETAILED BY Richard Chwist
CONCRETE BY _____