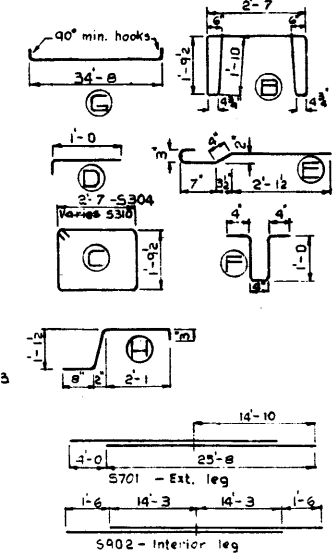


DESIGNED BY: R. CHWIST
 CHECKED BY: _____
 DATE: September 1962

BAR TYPES

All bar dimensions are out to out.



BAR LIST

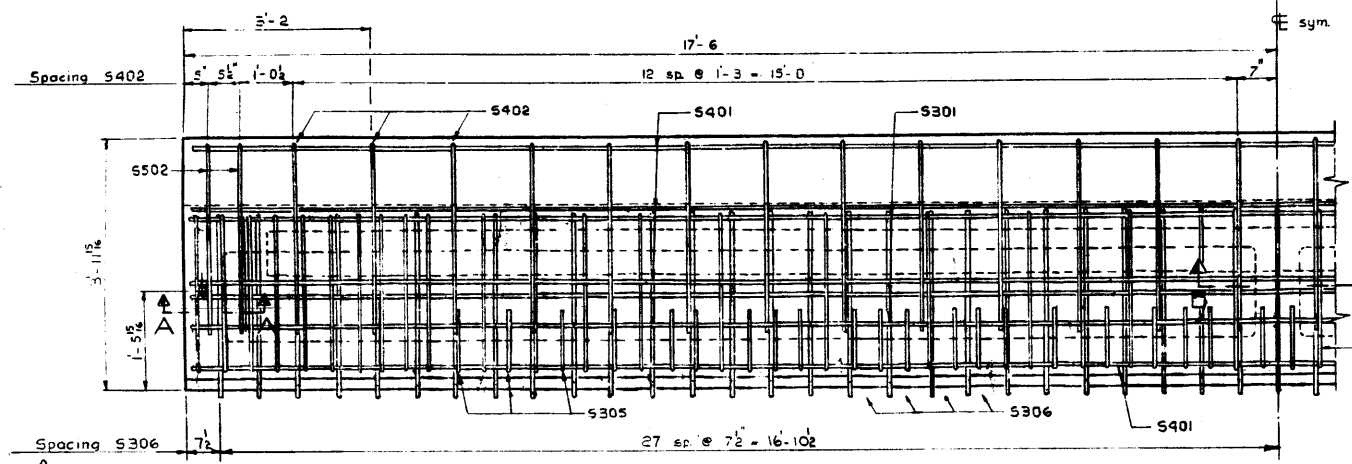
Mark	Size	Number	Type	Length	Weight
S301	3	3	str	34'-8"	39
S303	3	36	B	10'-7"	143
S304	4	4	C	9'-3"	14
S305	4	44	D	1'-3"	21
S306	5	55	E	3'-5"	71
S307	2	28	str	5'	4
S308	3	3	str	1'-6"	2
S309	3	2	F	3'-0"	2
S401	4	4	str	34'-8"	93
S402	4	26	H	4'-2"	72
S501	5	2	str	2'-7"	5
S502	5	4	H	4'-2"	17
S801	8	2	6	35'-9"	191
S701	7	2	str	25'-8"	105
S901	9	2	6	35'-11"	244
S902	9	2	str	30'-0"	204
S310	3	2	C		

* skewed stringer only Total 1,227 lbs.

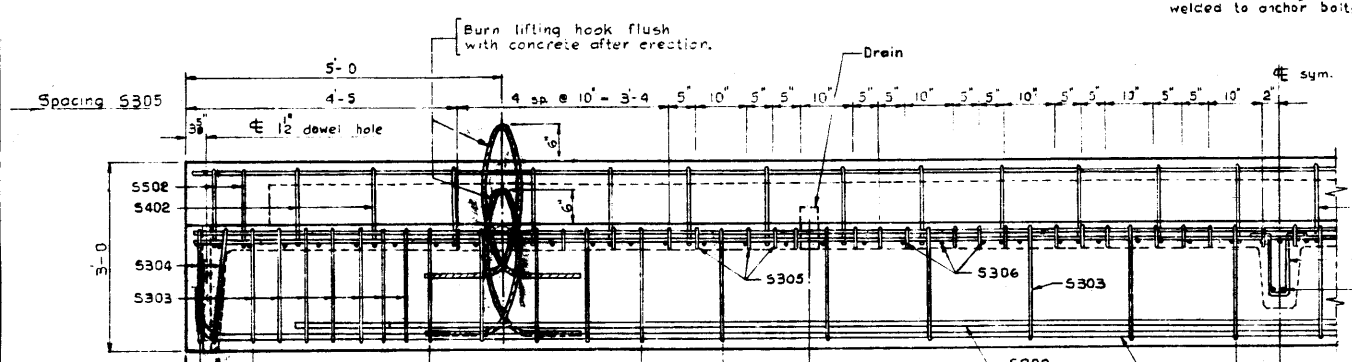
GENERAL NOTES

DESIGN
 Live load - A.A.S.H.O. H20 - S16 modified as shown.
 Dead load - includes allowance for 2" wearing surface.
 Concrete - to be standard weight aggregates with maximum aggregate size of 1/2 inch. Minimum 28 day compressive strength to be 4000 p.s.i.

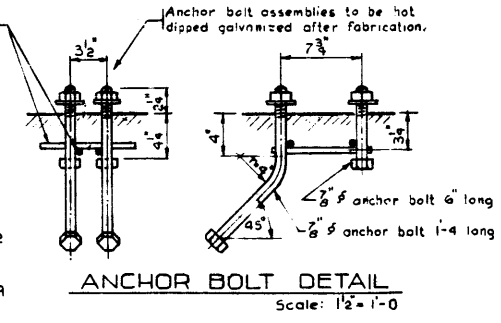
CONSTRUCTION
 Entrained air shall be not less than 5%.
 Diameters of all bends shall conform to the recommended minimum and all hooks, unless otherwise noted shall conform to the recommended sizes detailed in the A.C.I. Manual of Standard Practice for Detailing Reinforced Concrete Structures.
 Each stringer shall have a cast camber of 1/4 inch.
 All acute angles on skewed stringers shall have a 1/4 inch chamfer.
 Concrete shall attain at least 30% of the specified 28 day compressive strength before the units are stripped from the forms or lifted.
 Lifting force at each hook is to be vertical at all times.
 Units are to conform to the requirements of the Alberta Government Specifications for the Manufacture of Precast Concrete Bridge Units.



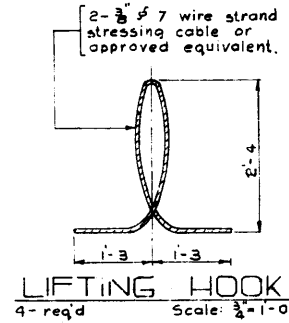
PLAN VIEW
Scale: 3/4" = 1'-0"



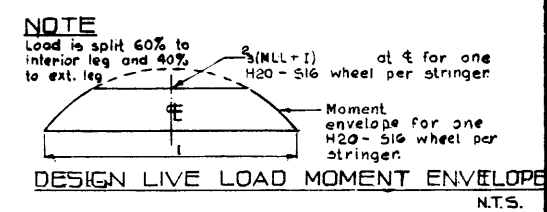
ELEVATION
Scale: 3/4" = 1'-0"



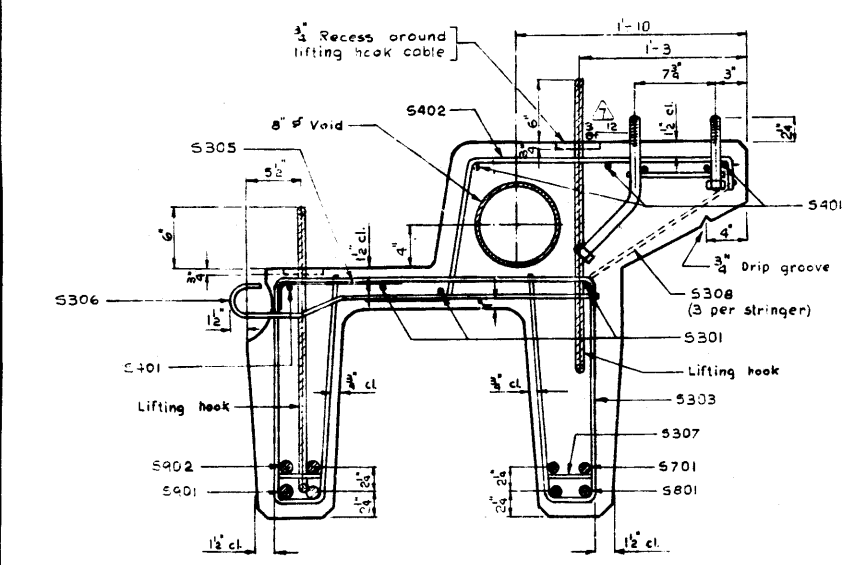
ANCHOR BOLT DETAIL
Scale: 1/2" = 1'-0"



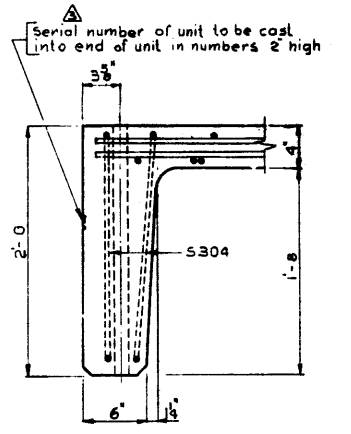
LIFTING HOOK
Scale: 3/4" = 1'-0"



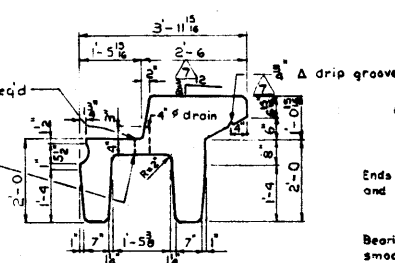
DESIGN LIVE LOAD MOMENT ENVELOPE
N.T.S.



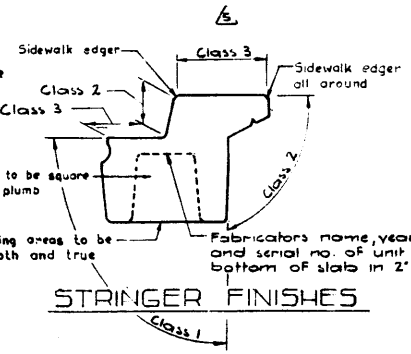
STRINGER SECTION
Scale: 1/2" = 1'-0"



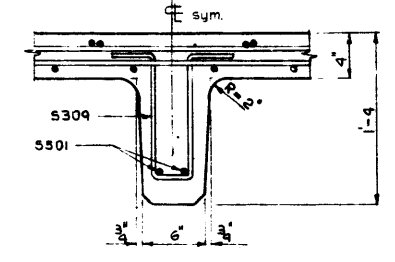
SECTION A-A
Scale: 1/2" = 1'-0"



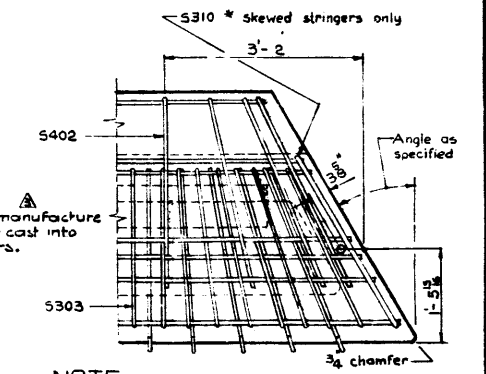
TYPICAL SECTION
Scale: 1/2" = 1'-0"



STRINGER FINISHES



SECTION B-B
Scale: 1/2" = 1'-0"



SKEWED STRINGER
Scale: 3/4" = 1'-0"

NO.	DATE	DESCRIPTION	BY
1	Oct 20/62	Curb slope	D.G.
2	Oct 17/63	S306 bars	P.E.
3	Sept 18/63	Notes & finishes revised	B.S.
4	Sept 12/63	Notes revised	B.S.
5	May 28/63	Serial number	R.C.H.
6	April 11/63	General notes	R.E.
7	Jan 11/63	General Revision	R.C.H.

PRECAST CONCRETE CURB STRINGER
 TYPE E.K. 35 FT. LOADING H20 - S16

GOVERNMENT OF THE PROVINCE OF ALBERTA
 DEPARTMENT OF HIGHWAYS
 BRIDGE BRANCH, EDMONTON

FILE NO.	HWY. NO.	DWG. NO.
LOCATION	SCALE GA. SHOWS	5-809
STREAM	SHEET	OF