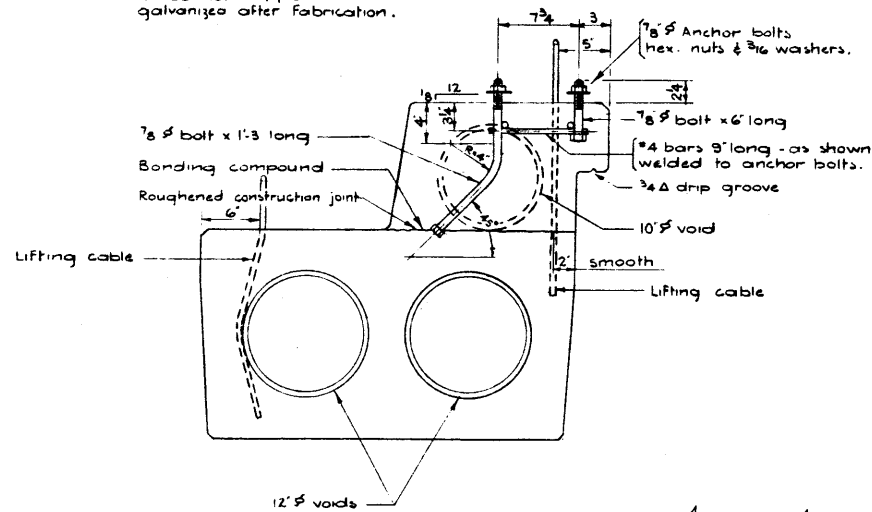


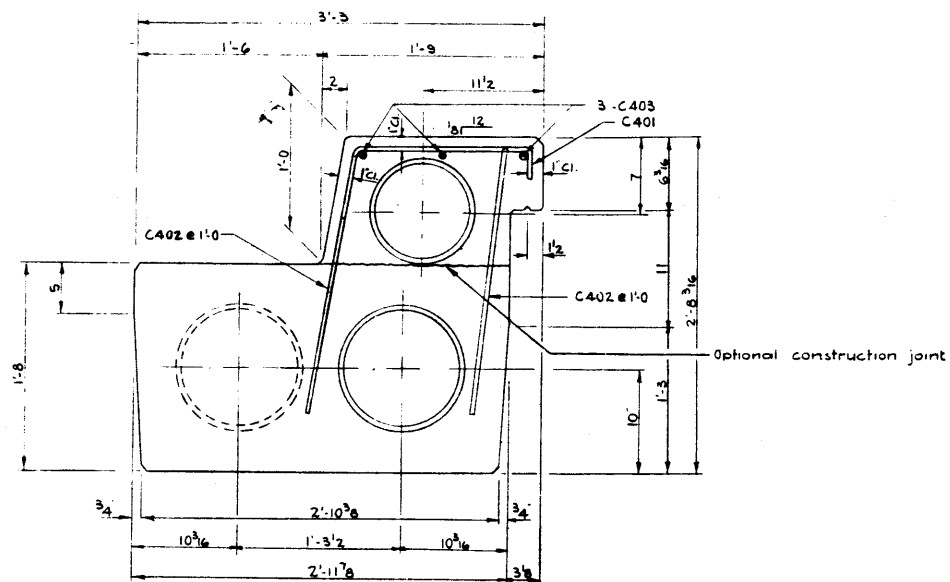
Square Stringer Skewed Stringer

PLAN
Scale: 3/4" = 1'-0"

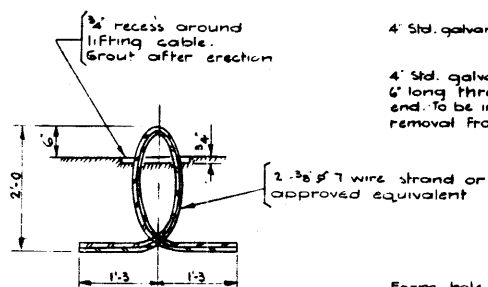
NOTE:
Anchor bolt assemblies
to be hot dipped
galvanized after fabrication.



A-A
Scale: 1/2" = 1'-0"



B-B
Scale: 1/2" = 1'-0"



LIFT HOOK

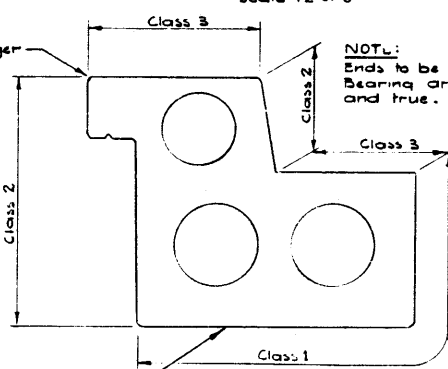
Form hole larger than pipe.
Fill space with grout when
installing short pipe.

DRAIN DETAIL

NOTE:
Place drains at the
quarter points & at
midspan of each unit

Sidewalk edger
all around.

NOTE:
Ends to be square and plumb.
Bearing areas to be smooth
and true.

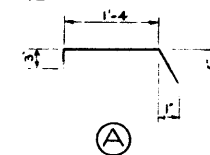


STRINGER FINISHES

Fabricator's name, serial no.,
& year of manufacture to be
cast into bottom of unit in
2" letters.

Stringer length	BAR LIST (Additional bars)							
	Mark	Size	No.	Type	X	Y	Length	Weight
35'-0	C401	4	38	A			2'-2	51
	C402	4	70	Str.			2'-1	97
	C403	4	8	Str.			39'-8	69
							Total	217
40'-0	C401	4	40	A			2'-2	58
	C402	4	8	Str.			2'-1	111
	C403	4	8	Str.			39'-8	79
							Total	248
45'-0	C401	4	45	A			2'-2	65
	C402	4	90	Str.			2'-1	125
	C403	4	8	Str.			44'-8	90
							Total	280

BAR TYPES
USE THE DIMENSIONS AS SHOWN TO CUT



GENERAL NOTES

- This drawing to be used in conjunction with the applicable stringer drawing and all details and notes not shown here shall conform to that drawing.
- Connectors are required on the interior side only and shall be spaced according to the corresponding interior stringer.
- Anchor bolts to be supplied at the spacing specified by the Department.
- Lifting force to be vertical at each hook.

PRESTRESSED CONCRETE
ROUND VOID TYPE "K"
CURB STRINGER



GOVERNMENT OF THE PROVINCE OF ALBERTA
DEPARTMENT OF HIGHWAYS
BRIDGE BRANCH, EDMONTON

NO.	DATE	DESCRIPTION	BY

FILE NO. _____ HWY. NO. _____ DWG. NO. _____
LOCATION _____ SCALE _____ SHEET _____
STREAM _____ SHEET _____ OF _____

5 812

DESIGNED BY Robert E. Bolter.
DATE _____
DETAILED BY B.W. Gawicki.
DATE _____
CHECKED BY _____
DATE _____