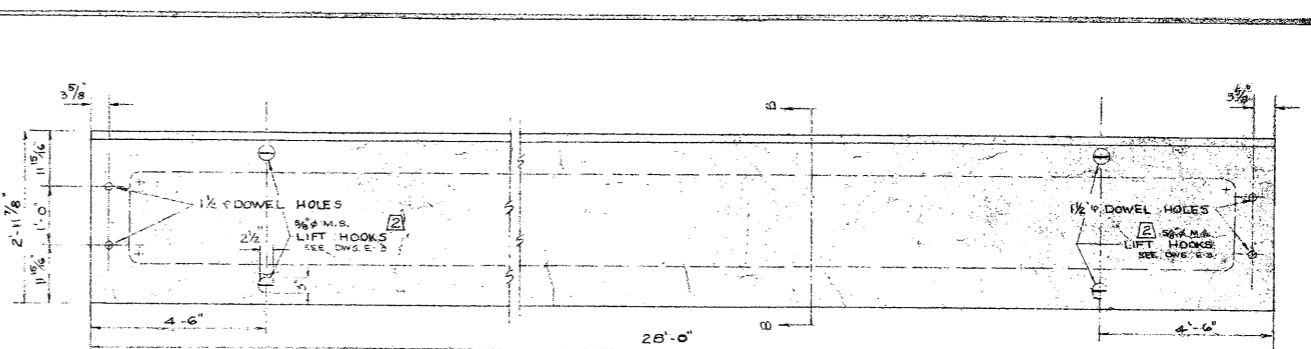
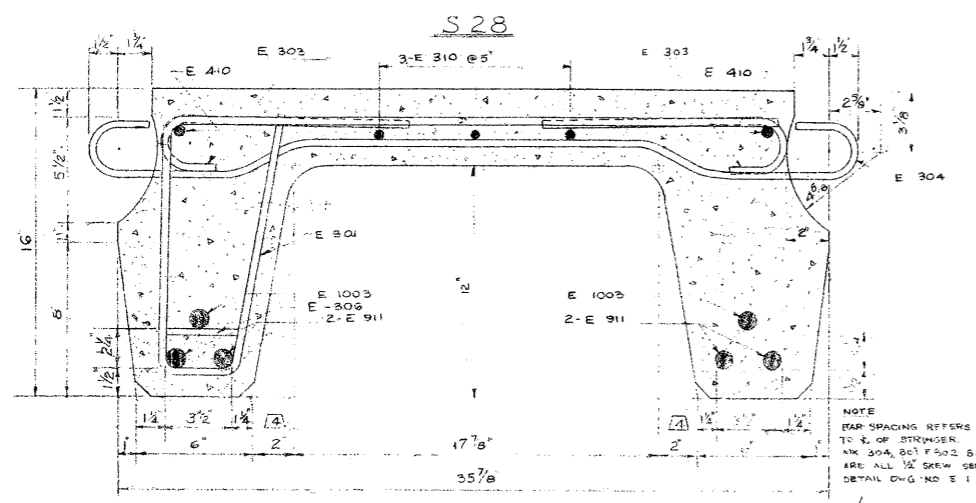


PLAN VIEW  
SCALE: 3/4" = 1'-0"

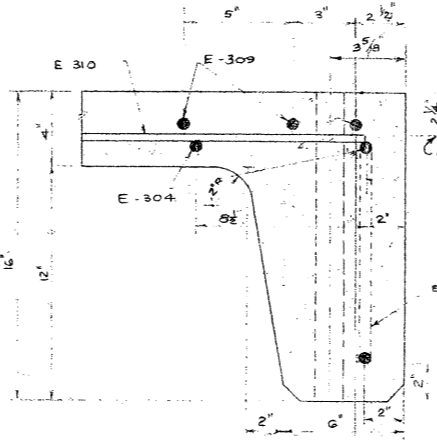


PLAN VIEW  
SCALE: 3/4" = 1'-0"

NOTE: BOOM LENGTH FOR LIFTING, 19 FT.



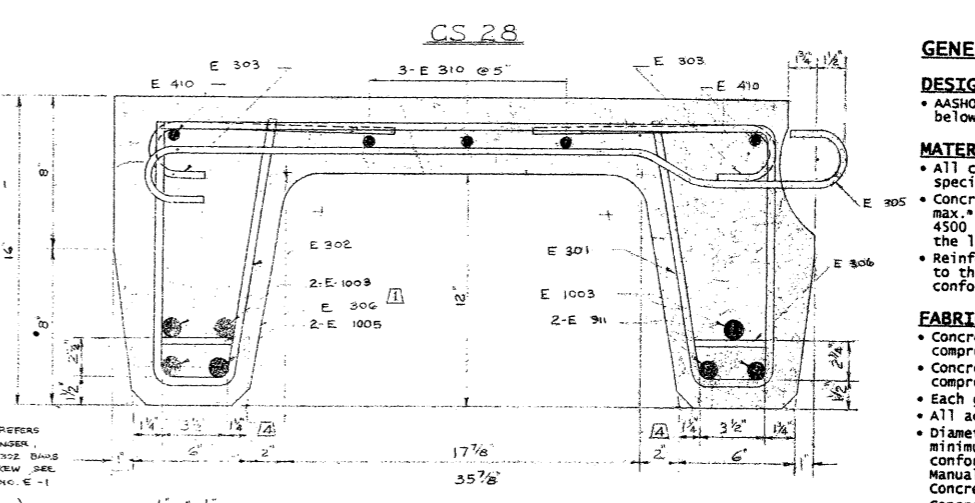
CROSS SECTION A-A  
SCALE: 3" = 1'-0"



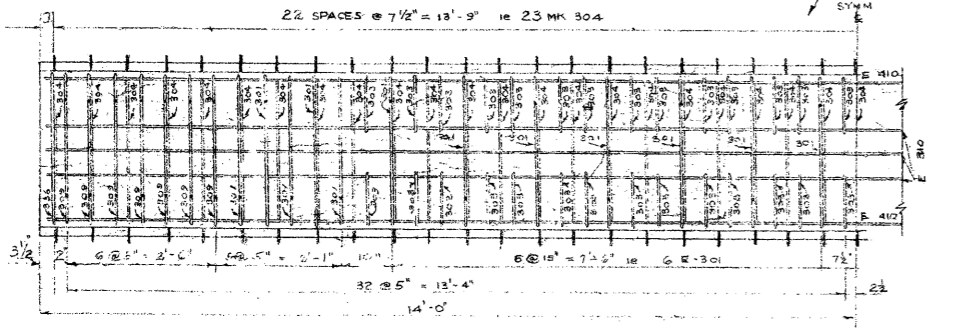
TYPICAL SECTION THRU END BULKHEAD  
SCALE: 3" = 1'-0"

NOTE: WOOD BLOCK INSERTS SEE DETAIL DWG NO. E-1

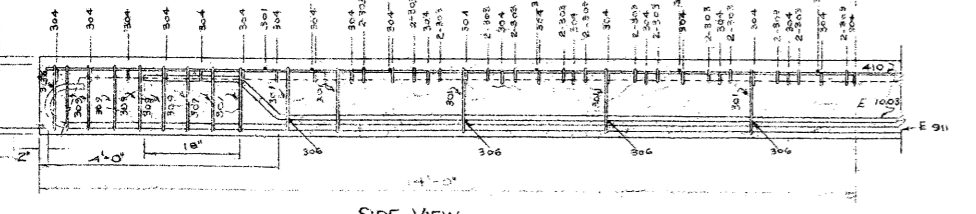
NOTE: BAR SPACING REFERS TO E OF STRINGER, MK 304, 301 & 302 BARS ARE ALL 1/2" SREW SEE DETAIL DWG NO. E-1



CROSS SECTION B-B  
SCALE: 3" = 1'-0"



PLAN VIEW  
SCALE: 3/4" = 1'-0"



SIDE VIEW  
REINFORCING ASSEMBLY  
SCALE: 3/4" = 1'-0"

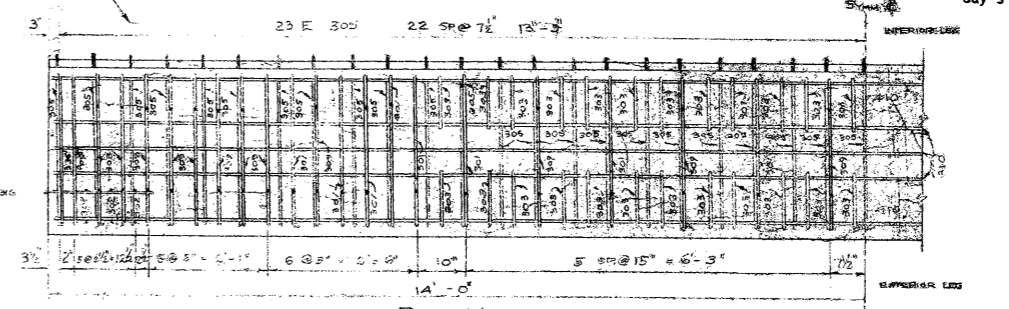
DETAILS OF INTERIOR STRINGER

HANDLING WT. 9500

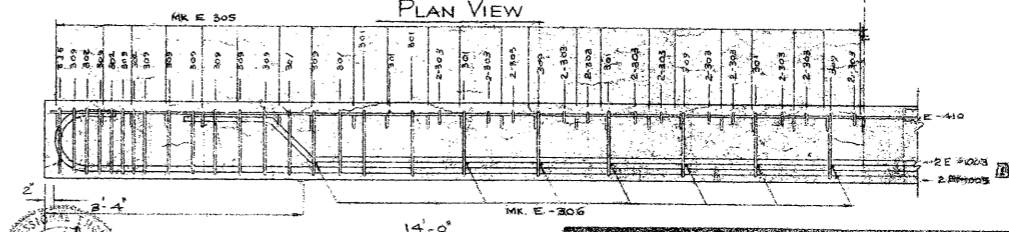
STEEL SCHEDULE

[S 28] INTERIOR STRINGER							
MARK	NO	SIZE	SKETCH	OUT TO OUT DIMENSION	LENGTH	REMARKS	WEIGHT
301	24	#3	U	2'-7 1/2"	5'-1"		42.5
303	56	#3	C	12"	1'-4"		27.9
304	45	#3	U	3'-3"	3'-10"		64.2
306	16	#3	U	4 1/2"			2.6
310	3	#3	U	27'-8"		CAN BE WELDED WITH 1/2" SREW	31.2
309	14	#3	U	2'-7 1/2"	7'-5"		39.0
336	2	#3	U	2'-8"	8'-2"		6.2
410	2	#2	U	27'-8"		CAN BE WELDED WITH 1/2" SREW	36.0
911	4	#5	C	27'-8"	30'-0"		488.0
1003	2	#4	U	24'-5"	25'-0"		215.3
TOTAL WT.							877.2

[CS 28] EXTERIOR STRINGER							
MARK	NO	SIZE	SKETCH	OUT TO OUT DIMENSION	LENGTH	REMARKS	WEIGHT
301	16	#3	U	2'-7 1/2"	5'-1"	COMBINATION OF BARS AS SHOWN	30.5
302	6	#3	U	2'-6"			3.6
303	48	#3	C	12"	1'-4"		23.9
304	45	#3	U	3'-0"	3'-7"		60.5
306	28	#3	U	4 1/2"		WELDED TO 302	3.4
309	28	#3	U	2'-7 1/2"	7'-5"		77.9
310	3	#3	U	27'-8"		CAN BE WELDED WITH 1/2" SREW	31.2
316	2	#3	U	1'-9"			2.3
336	2	#3	U	2'-0"	8'-2"		6.2
410	2	#4	U	27'-8"		CAN BE WELDED WITH 1/2" SREW	36.0
911	12	#5	C	27'-8"	30'-0"		204.0
1003	3	#4	U	24'-5"	25'-0"		322.7
1005	2	#4	U	27'-8"	30'-0"	SPECIAL ORDER - 1/2" SREW	258.2
TOTAL WT.							1063.3



SIDE VIEW  
REINFORCING ASSEMBLY  
SCALE: 3/4" = 1'-0"



PLAN VIEW  
SCALE: 3/4" = 1'-0"

DETAILS OF EXTERIOR STRINGER

NOTE: HOLES FOR CONNECTING POSTS AND CURB UNITS NOT SHOWN ON THIS DRAW.

PRECAST CONCRETE  
28 FT SPAN TYPE "E"  
INTERIOR STRINGER

GOVERNMENT OF THE PROVINCE OF ALBERTA  
DEPARTMENT OF HIGHWAYS  
BRIDGE BRANCH, EDMONTON

FILE NO. \_\_\_\_\_ HWY. NO. \_\_\_\_\_ DWG. NO. \_\_\_\_\_  
LOCATION SCALE AS SHOWN 5-815  
STREAM \_\_\_\_\_ SHEET \_\_\_\_\_ OF \_\_\_\_\_

NO. \_\_\_\_\_ DATE \_\_\_\_\_ DESCRIPTION BY \_\_\_\_\_  
REVISIONS