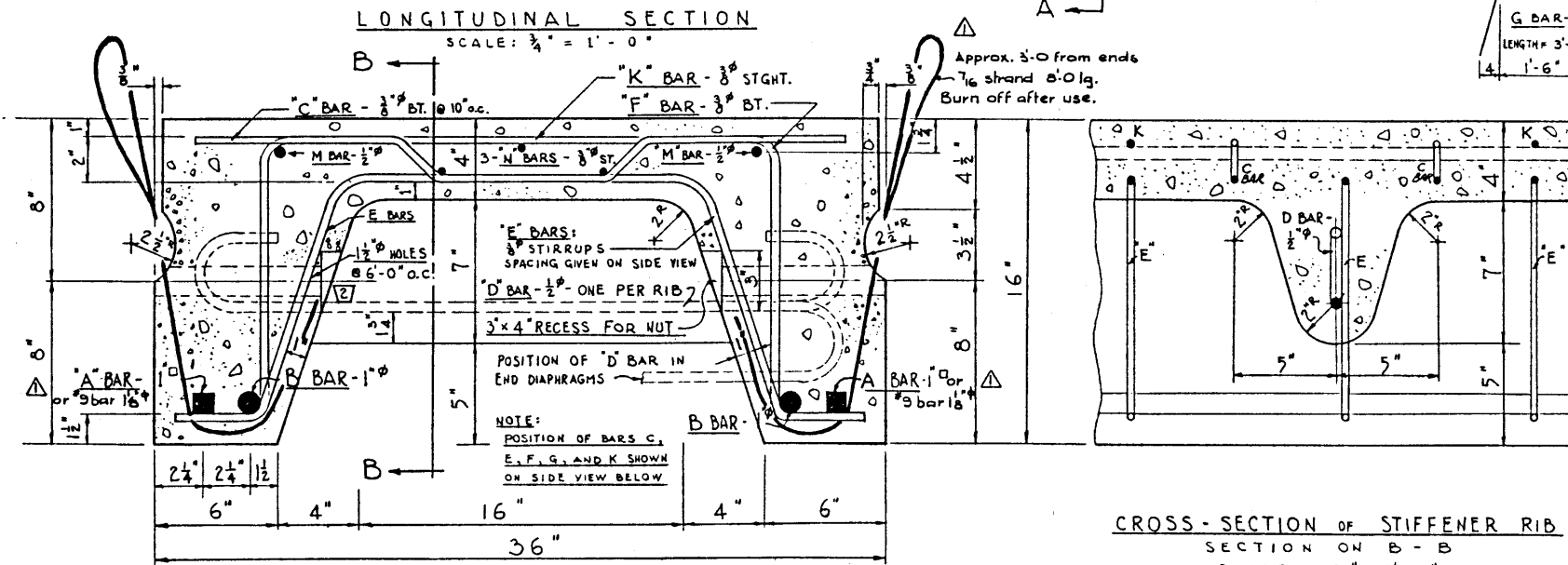
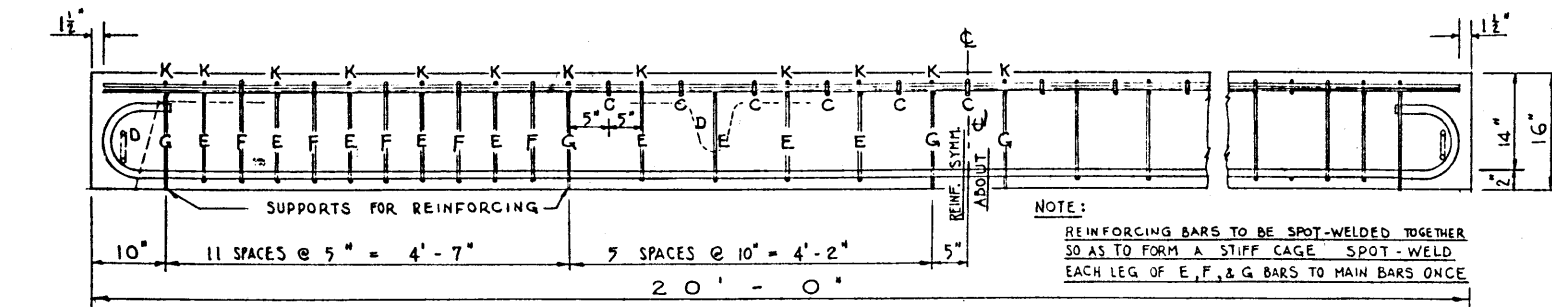


ONE 1/2" BAR IN EACH END-DIAPHRAGM LOCATION SHOWN ON SECT. A-A

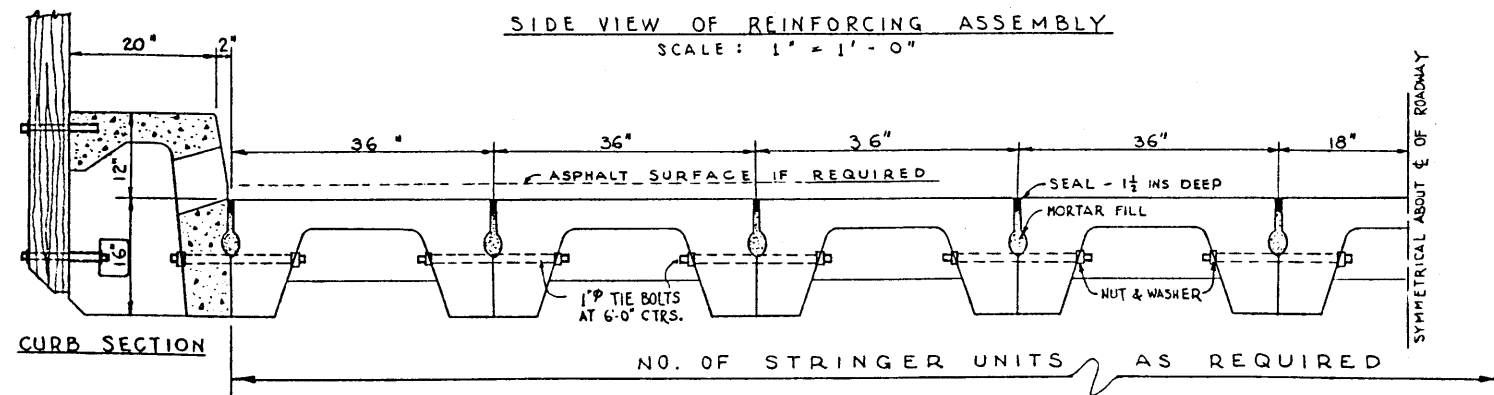


CROSS-SECTION A - A  
SCALE: 3" = 1'-0"

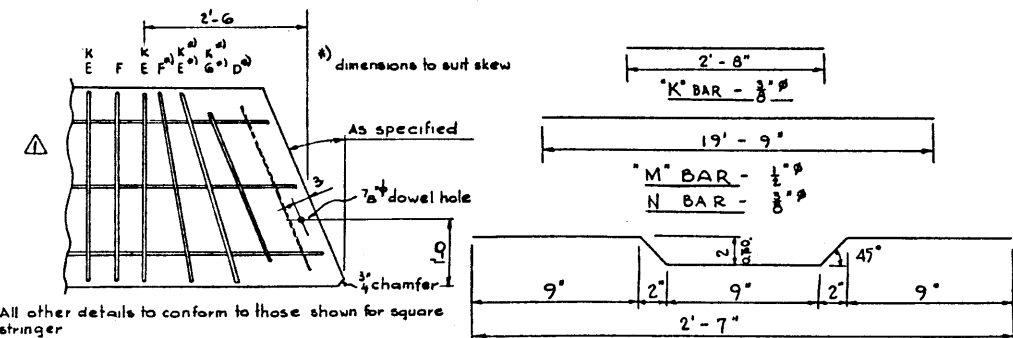
CROSS-SECTION OF STIFFENER RIB  
SECTION ON B - B  
SCALE: 3" = 1'-0"



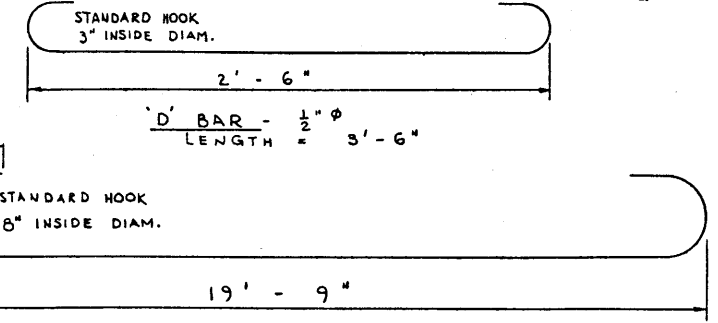
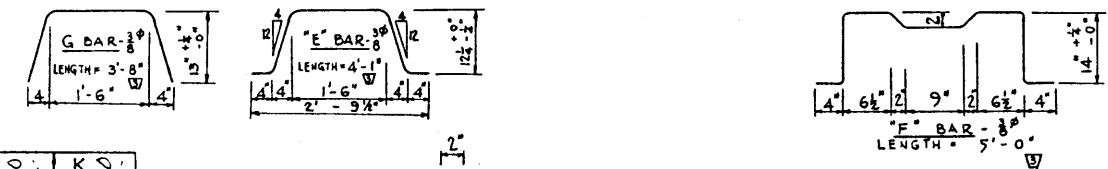
SIDE VIEW OF REINFORCING ASSEMBLY  
SCALE: 1" = 1'-0"



SECTION THROUGH ROADWAY  
SHOWING ASSEMBLY OF UNITS  
SCALE: 1" = 1'-0"



SKEW STRINGER  
SCALE: 3/4" = 1'-0"



A BAR - 1" dia, AND  
B BAR - 1" dia  
LENGTH = 21'-11" EACH

BAR BENDING DETAILS  
NOT TO SCALE.

**GENERAL NOTES**

**DESIGN**

AASHTO, R61 specifications except, live load is as shown below. Dead load includes 2" wearing surface.

**MATERIALS**

- All concrete materials shall conform to A.S.T.M. specifications.
- Concrete shall be of standard weight aggregate with max. size 3/4". Min. compressive strength shall be 4500 p.s.i. at 28 days. Entrained air shall fall between the limits of 5.5 ± 1%.
- Reinforcing steel shall be of intermediate grade conforming to the C.S.A. specification 630.1-1954, and deformed to conform to the specification 630.6-1954.

**FABRICATION**

- Concrete must reach 30% of the required 28 day compressive strength before stripping and lifting.
- Concrete must reach 65% of the required 28 day compressive strength before shipping.
- Each girder shall have a poured camber of 1/8".
- All acute corners on skewed girders to have 1/4" chamfer.
- Diameters of all bends shall conform to the recommended minimums, and all hooks, unless otherwise noted shall conform to the recommended sizes detailed in the A.C.I. Manual of Standard Practice for Detailing Reinforced Concrete Structures.
- Concrete test cylinders shall be tested by an independent testing laboratory, copies of all test results shall be forwarded to the Bridge Branch.
- Tests shall be taken at the rate of one cylinder for each two stringers, with not less than two cylinders for each day's pouring.

**NOTES**

CONCRETE TO HAVE 4500 P.S.I. STRENGTH AT 28 DAYS.  
INTERMEDIATE GRADE REINFORCING STEEL  
3/8" INCH MAX. SIZE COARSE AGGREGATE

**DESIGN FEATURES:**

ALLOWABLE CONCRETE STRESS = 1800 p.s.i. IN COMPRESSION  
ALLOWABLE STEEL STRESS = 20000 p.s.i. IN TENSION  
EACH STRINGER DESIGNED TO CARRY 1/3 OF WHEEL LOAD  
H20-516-44 LOADING WITH IMPACT INCLUDED

PRECAST CONCRETE  
20 FT. SPAN TYPE 'A'  
INTERIOR STRINGER

GOVERNMENT OF THE PROVINCE OF ALBERTA  
DEPARTMENT OF HIGHWAYS  
BRIDGE BRANCH, EDMONTON

NO.	DATE	DESCRIPTION	BY
1	Nov 30/61	Bars & lifting hooks	R.E.
REVISIONS			

FILE NO.	HWY. NO.	DWG. NO.
LOCATION	SCALE	5-816
STREAM	SHEET	OF