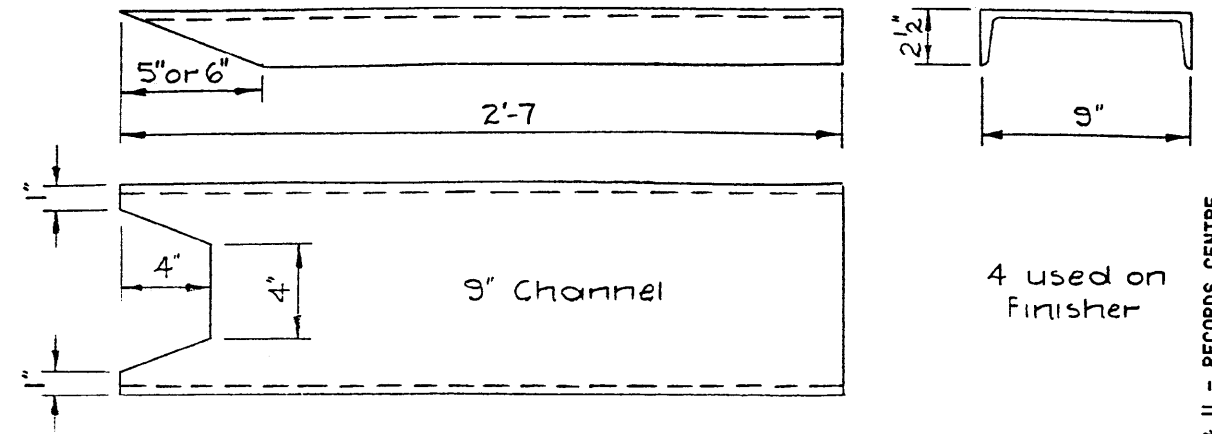


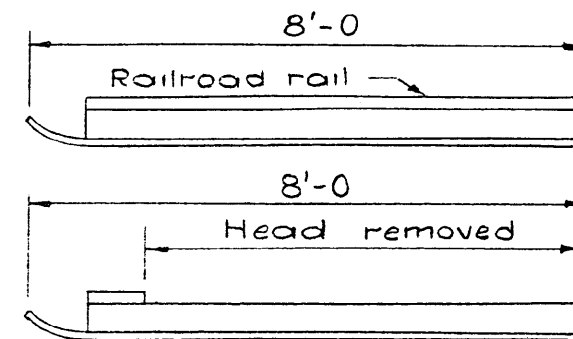
WIRE MESH HOLD-DOWN DEVICES



①

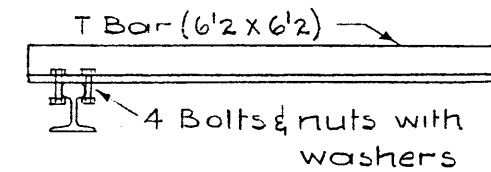
Adnun Finisher

AT & U - RECORDS CENTRE
F198943



2 used outside of cat tracks on Barber-Greene Finisher

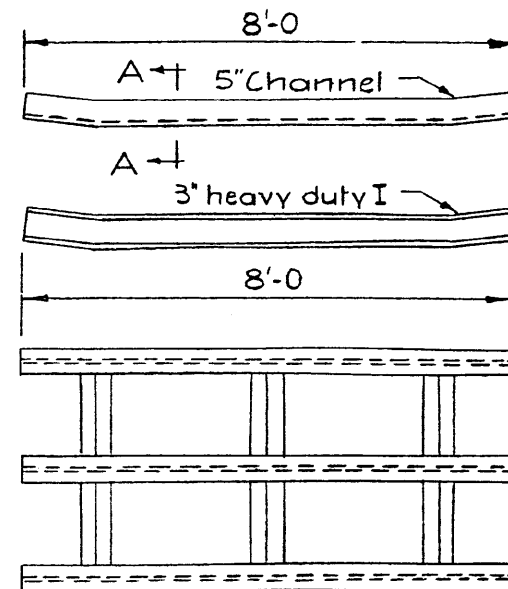
2 used between cat tracks on Barber-Greene Finisher



Bottom of Barber-Greene hopper frame slid over flange of inverted T Bar and machine pushed against T Bar stem uniformly.

②

Barber-Greene Finisher



2-Ski-shaped 5" channels outside of Barber-Greene cat tracks.
SECT. A-A

3-Ski-shaped 3" heavy duty Is between cat tracks, with 2" L bracing.

Barber-Greene Finisher

③

DWG: 5830

①