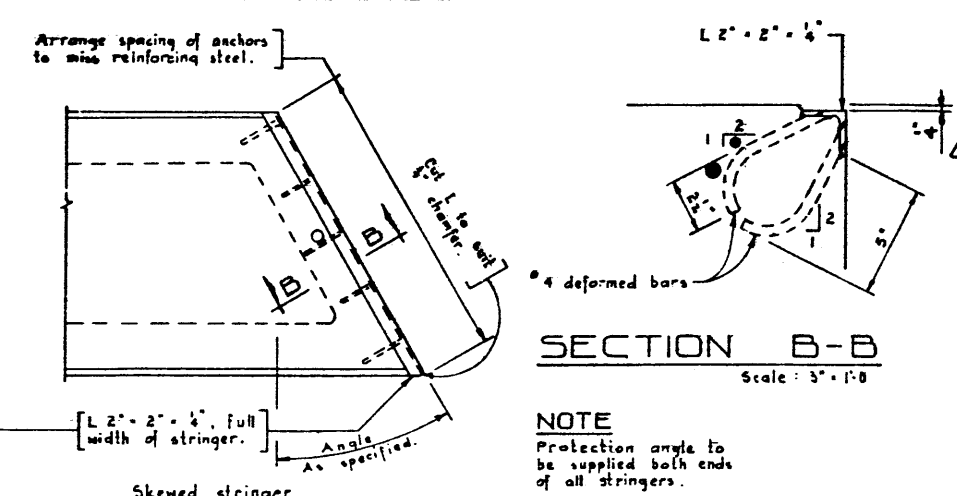
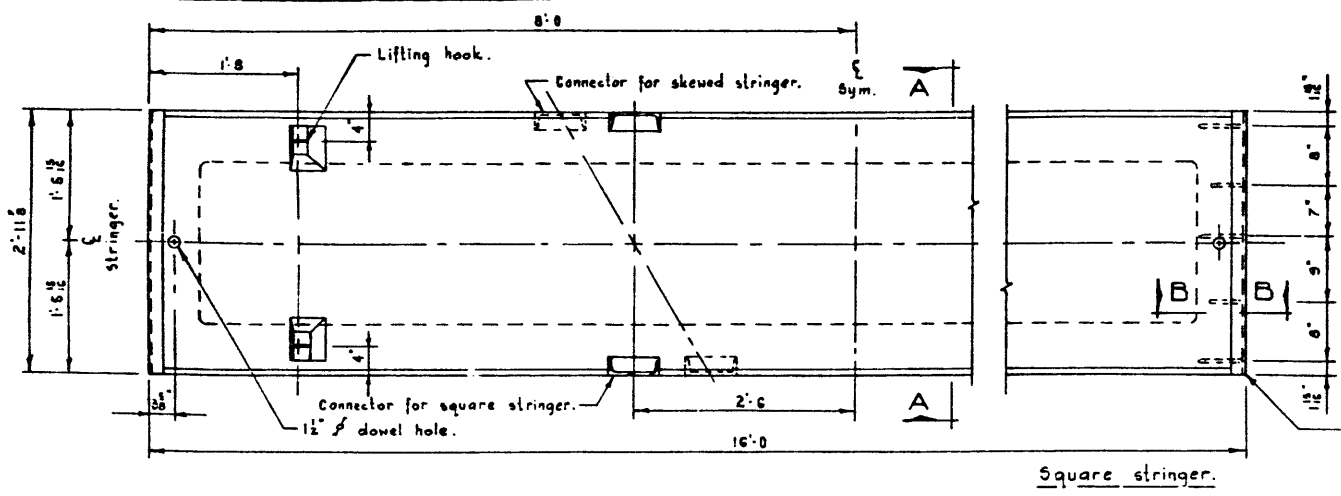
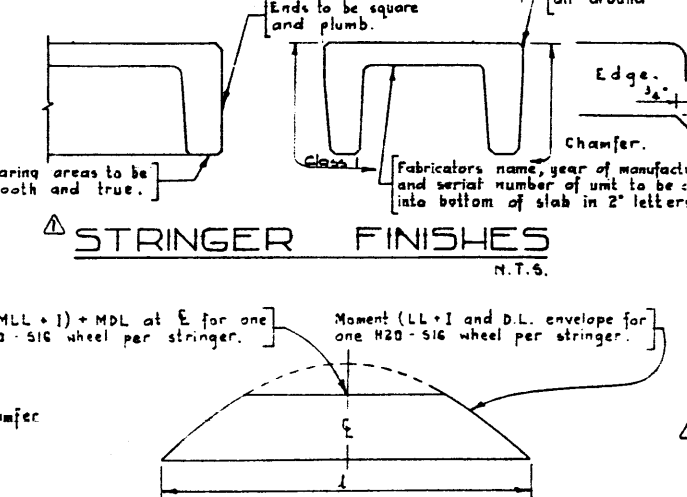
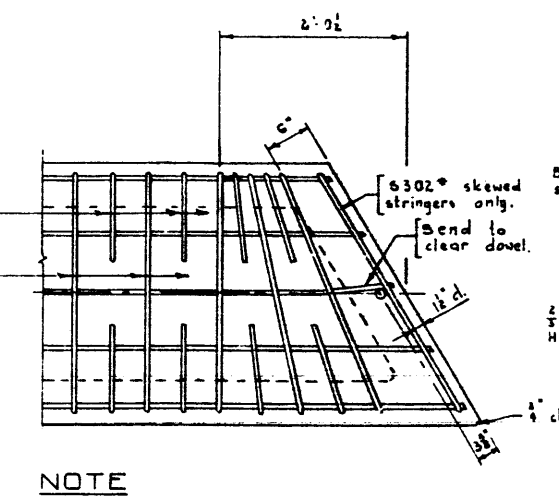
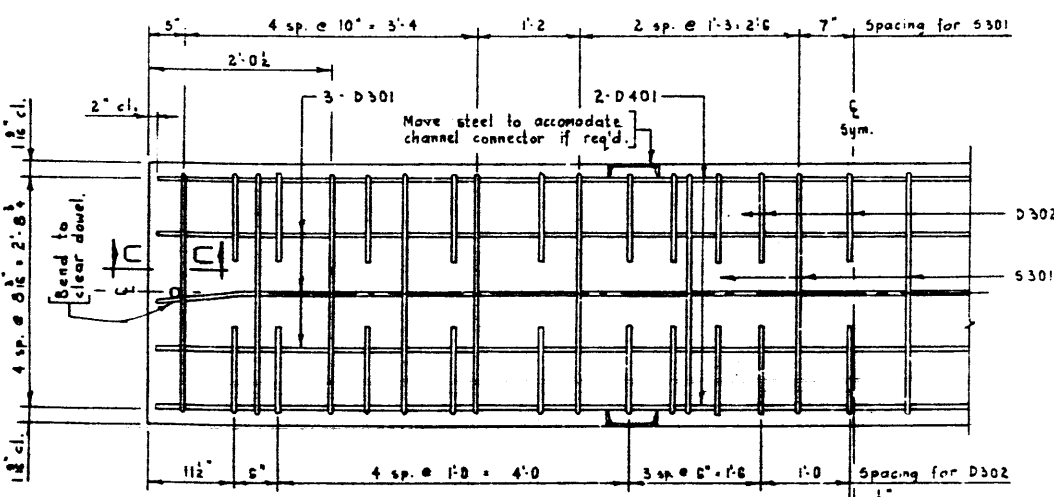


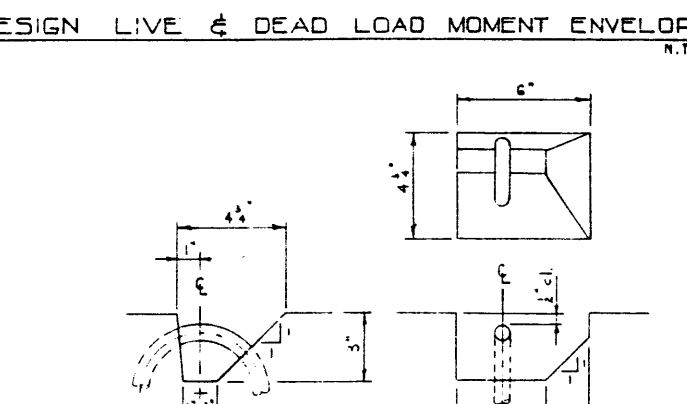
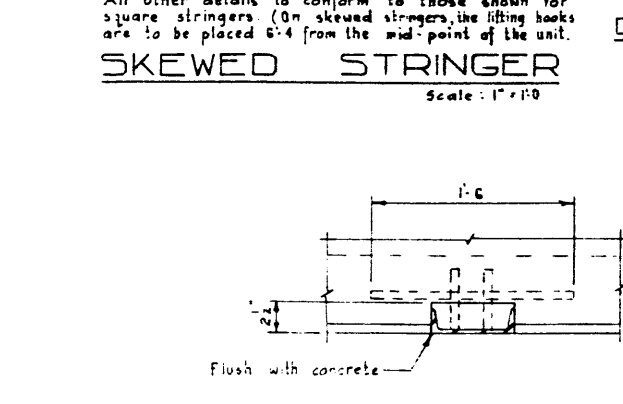
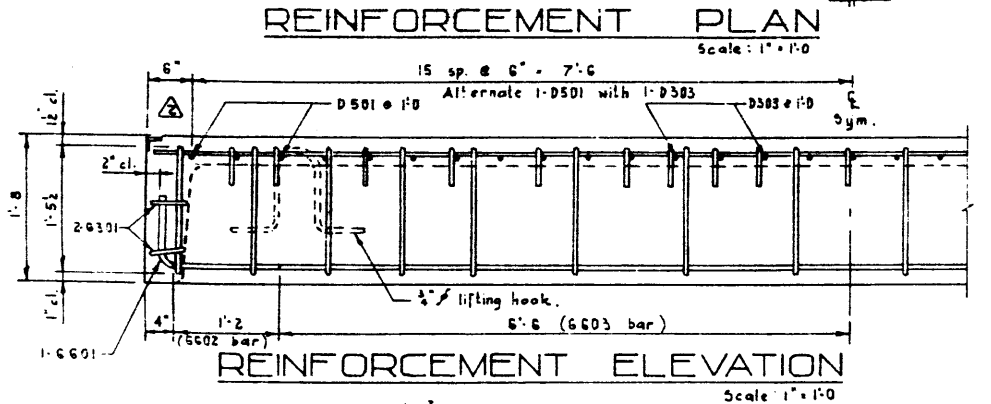
DESIGNED BY Robert E. Baller.
 CHECKED BY B. M. Sawicki.
 DATE MAY 18 63
 DATE JUNE 5 63
 DATE 18 63



BAR LIST						
Mark	Size	No.	Typs.	X	Y	Length, Weight.
D 301	3	3	Str.			15'-8 18
D 302	3	38	A			1'-5 20
D 303	3	15	Str.			2'-8 15
D 401	4	2	Str.			15'-8 21
D 501	5	16	Str.			2'-8 45
S 301	3	16	B			9'-4 56
S 302	3	2	D			
G 301	3	4	C	2'-9		3'-4 5
G 601	G	2	C	15'-8		16'-5 49
G 602	G	2	Str.			15'-4 46
G 603	G	2	Str.			13'-0 39
						Total lbs. 314



BAR TYPES N.T.S.	
(All bar dimensions are out to out.)	
Lifting hook or approved equivalent.	



GENERAL NOTES DESIGN

Live Load - A.A.S.H.O. H20 - S16 modified as shown.
 Dead Load - includes allowance for 2" wearing surface.
 Concrete - to be standard weight aggregates with maximum aggregate size of 2 inch. Minimum 28 day compressive strength to be 4000 p.s.i.

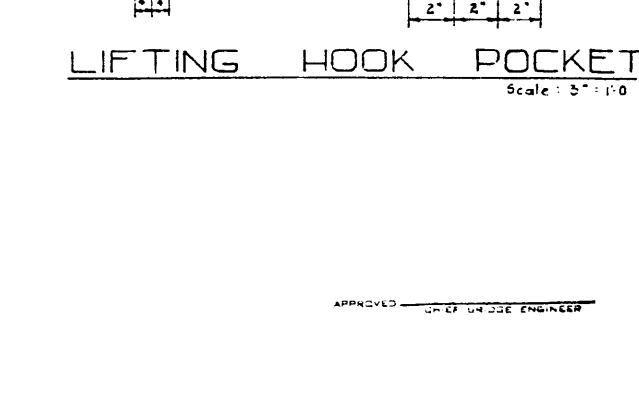
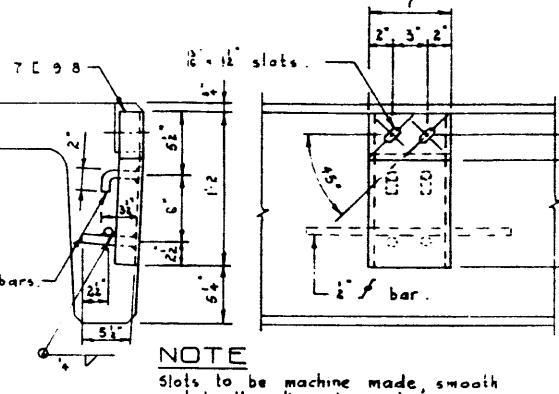
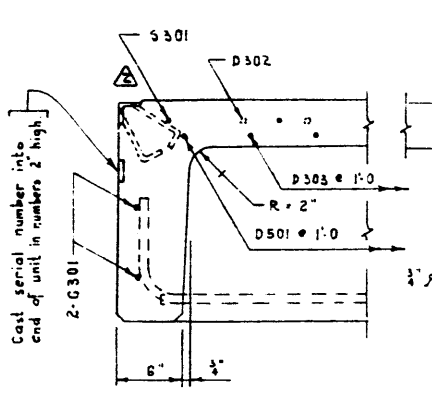
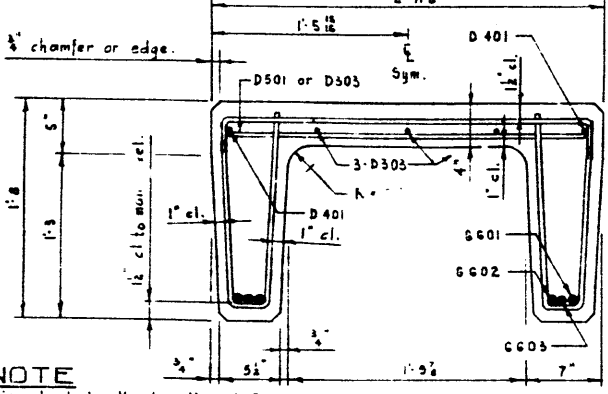
CONSTRUCTION

Reinforced air shall be 5/8" x 1/4".
 Diameters of all bends shall conform to the recommended minimum and all hooks, unless otherwise noted shall conform to the recommended sizes detailed in the A.C.I. Manual of Standard Practice for Detailing Reinforced Concrete Structures.
 Each stringer shall have a cast chamfer of 1/2 inch.
 All acute angles on skewed stringers shall have 1/2 inch chamfer.
 Concrete shall stand at least 30% of the specified 28 day compressive strength before the units are stripped from the forms or lifted.
 Each connector is to be supplied with one 1/2" x 2" H.T. bolt, one heavy hex semi finished nut and three hardened washers.

Units are to conform to the requirements of the Alberta Government Specification for the Manufacture of Precast Concrete Bridge Units.

ERECTION

Any free space between the connectors shall be filled with washers.



NOTE
 Tie the steel bundle together before placing. No welding will be permitted on main tensile reinforcement.

NOTE
 Cast serial numbers into end of unit in numbers 2" high.

NOTE
 Slots to be machine made, smooth and to the dimensions shown.

APPROVED _____
 CHIEF BRIDGE ENGINEER

NO.	DATE	DESCRIPTION	BY
1		General notes & finishes	R.E.
2		Revisions	

**PRECAST CONCRETE
 16 FT SPAN TYPE HC
 INTERIOR STRINGER**

GOVERNMENT OF THE PROVINCE OF ALBERTA
 DEPARTMENT OF HIGHWAYS
 BRIDGE BRANCH, EDMONTON

FILE NO. _____ REV. NO. _____ SHEET NO. _____
 LOCATION _____ SCALE _____ NOTED BY _____
 STREAM _____ SHEET OF 5-832-69