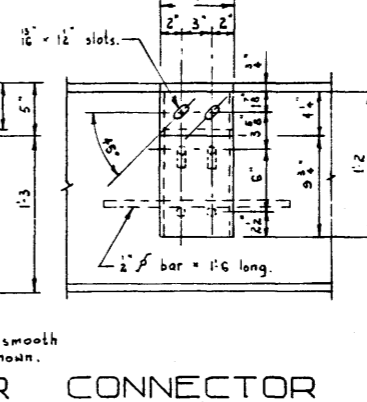
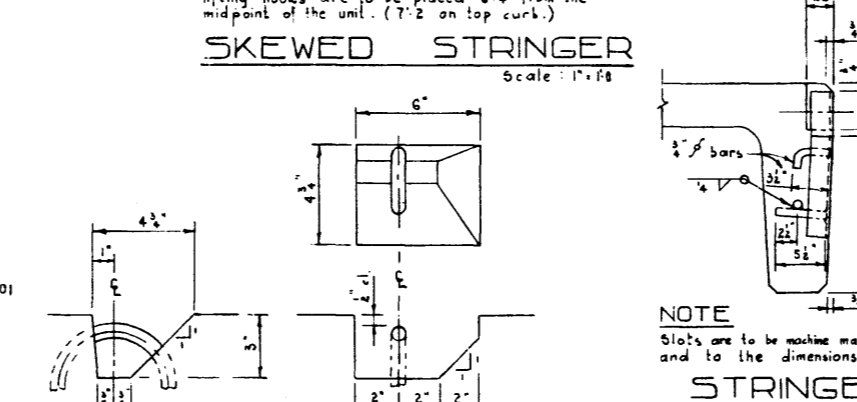
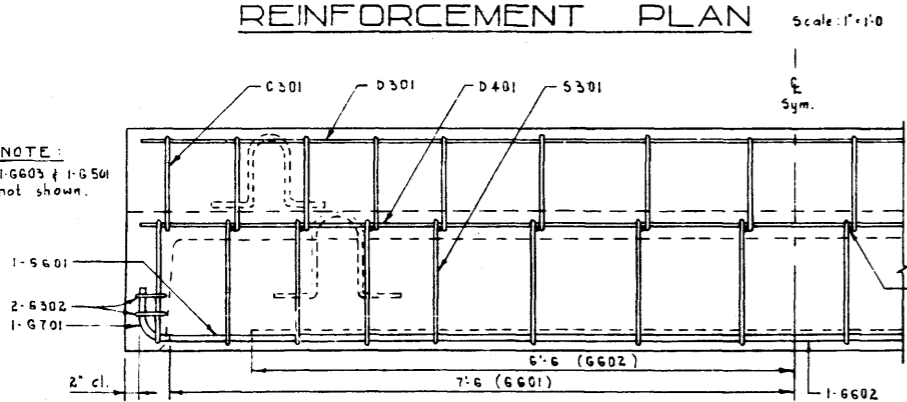
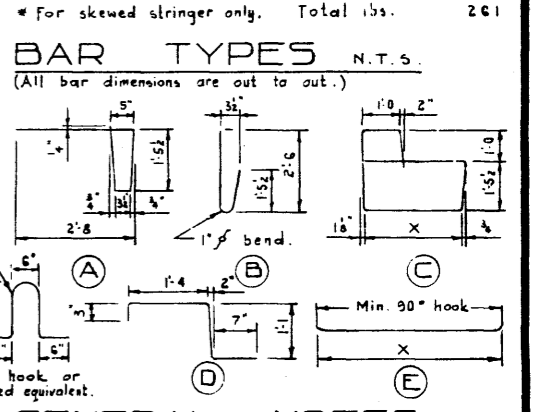
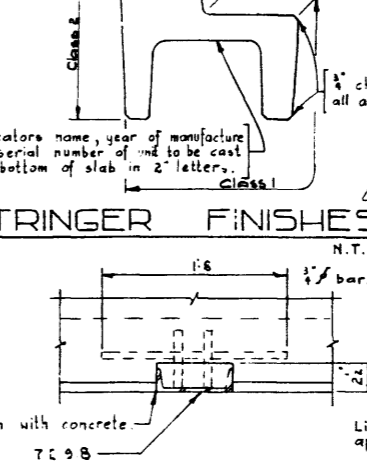
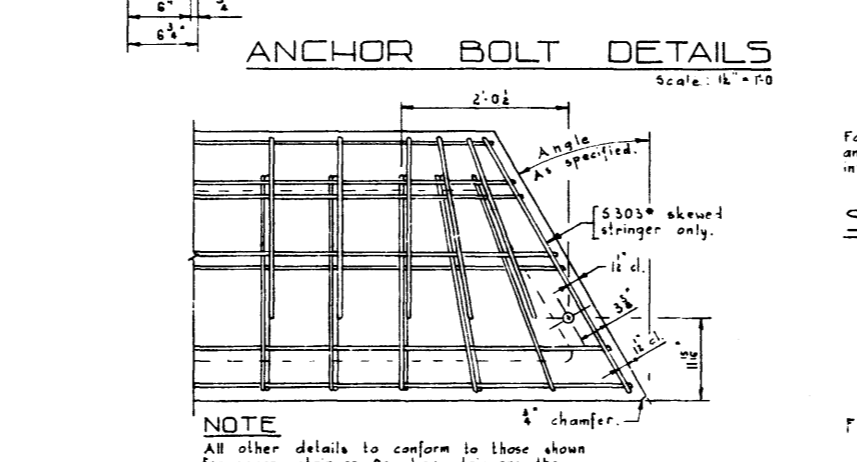
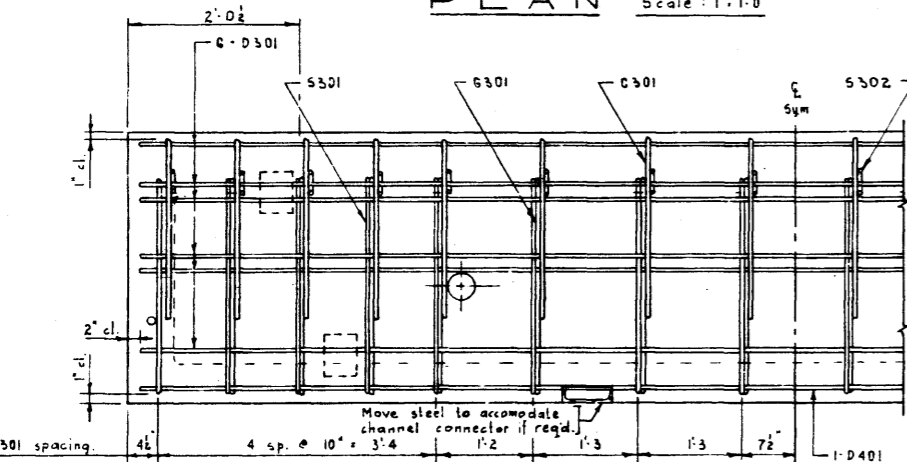


Mark	Size	No.	Type	X	Y	Length	Weight
D 301	3	6	Str.			15'-8"	35
D 401	4	1	Str.			15'-8"	10
S 301	3	16	A.			6'-0"	36
S 302	3	16	B.			4'-1"	25
S 303	3	2	C				
C 301	3	16	D			3'-3"	20
0 301	3	14	Str.			2'-8"	14
G 302	3	4	E	2'-9"		3'-4"	5
G 501	5	1	Str.			13'-6"	14
G 601	6	1	Str.			15'-0"	23
G 602	6	1	Str.			13'-0"	20
G 603	6	1	E	18'-8"		16'-5"	25
G 701	7	1	E	15'-8"		18'-7"	34



GENERAL NOTES DESIGN

Live Load - A.A.S.H.O. H20 - S16 modified as shown.

Dead Load - includes allowance for 2" wearing surface.

Concrete - to be standard weight aggregates with maximum aggregate size of 1/2 inch. Minimum 28 day compressive strength to be 4000 p.s.i.

CONSTRUCTION

Reinforced Air shall be 5/8" x 1/4".

Dimensions of all bars shall conform to the recommended minimums and all hooks, unless otherwise noted shall conform to the recommended sizes detailed in the A.C.I. Manual of Standard Practice for Detailing Reinforced Concrete Structures.

Each stringer shall have a cast camber of 1/2 inch.

All acute angles on skewed stringers shall have 1/2 inch chamfer.

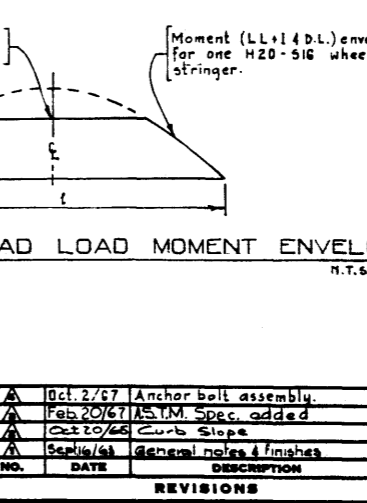
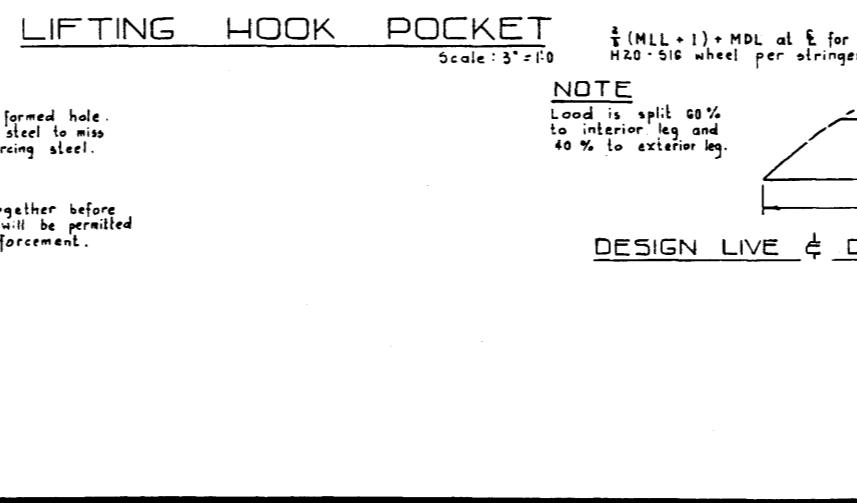
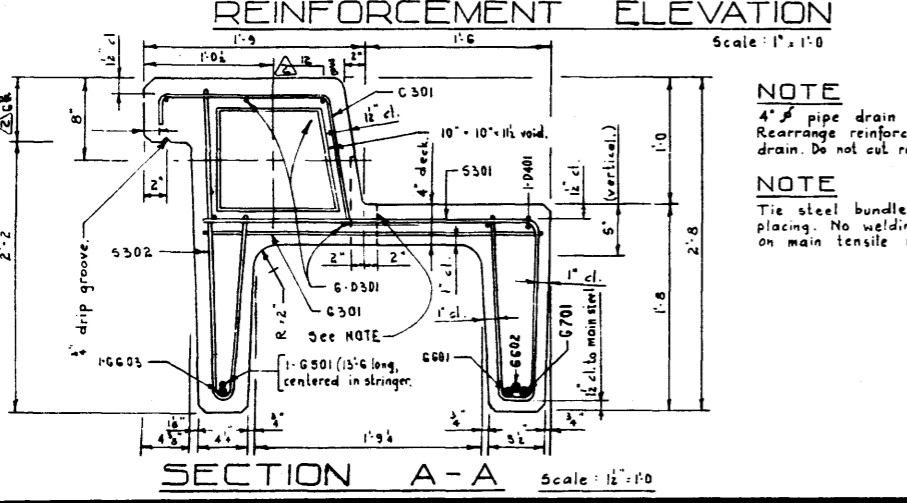
Concrete shall attain at least 30% of the specified 28 day compressive strength before the units are stripped from the forms or lifted.

Each connector is to be supplied with one 1/2" x 2" H.T. bolt, one heavy hex nut and three hardened washers.

Units are to conform to the requirements of the Alberta Government Specification for the Manufacture of Precast Concrete Bridge Units.

ERECTION

Any free space between the connectors shall be filled with washers.



APPROVED: _____ CHIEF BRIDGE ENGINEER

PRECAST CONCRETE
16 FT SPAN TYPE 'HC'
CURB STRINGER

GOVERNMENT OF THE PROVINCE OF ALBERTA
DEPARTMENT OF HIGHWAYS
BRIDGE BRANCH, EDMONTON

NO.	DATE	DESCRIPTION	BY
1	Oct 2/67	Anchor bolt assembly.	B.W.S.
2	Feb 20/67	ASTM Spec. added	D.A.
3	Oct 20/68	Curb Slope	DQ
4	Sept 16/69	General notes & finishes	R.E.

REVISIONS

FILE NO. _____ HWY. NO. _____
LOCATION _____ SCALE Noted.
STREAM _____ SHEET OF 5-833-69

DESIGNED BY Robert E. Bolter.
DATE May 19 63
DRAFTER D.M. Sawicki
DATE June 10 19 63
CHECKED BY _____
DATE 19 63

NOTE
4" pipe drain or formed hole. Rearrange reinforcing steel to miss drain. Do not cut reinforcing steel.

NOTE
Tie steel bundle together before placing. No welding will be permitted on main tensile reinforcement.

NOTE
Load is split 60% to interior leg and 40% to exterior leg.

NOTE
Slots are to be machine made, smooth and to the dimensions shown.

NOTE
1/2 (MLL + 1) + MDL at E for one H20 - S16 wheel per stringer.

NOTE
Moment (LL + 1/4 DL) envelope for one H20 - S16 wheel per stringer.