

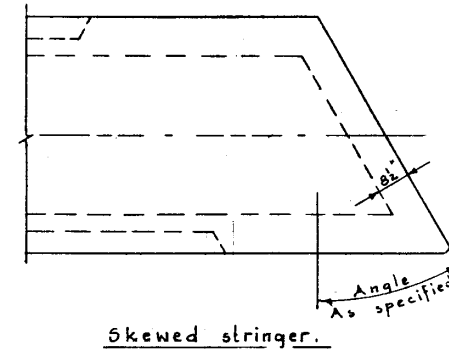
**GENERAL NOTES**

**DESIGN**

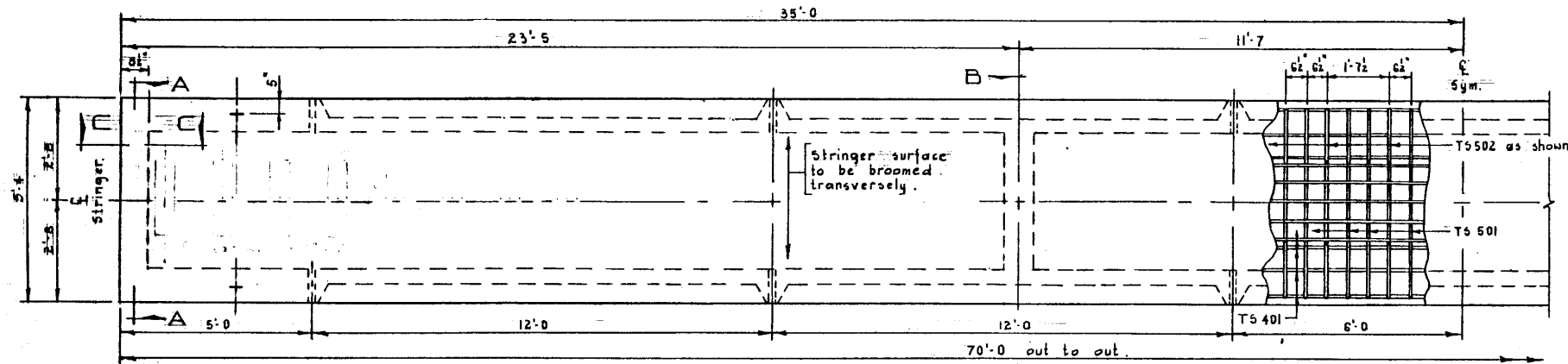
† A.A.S.H.O. 1961, including Interim Specifications.  
 † Dead Load - stringer .851 k/ft./stringer.  
 wearing surface .133 k/ft./stringer.  
 Live Load - 0.97 wheels per stringer.

**MATERIALS**

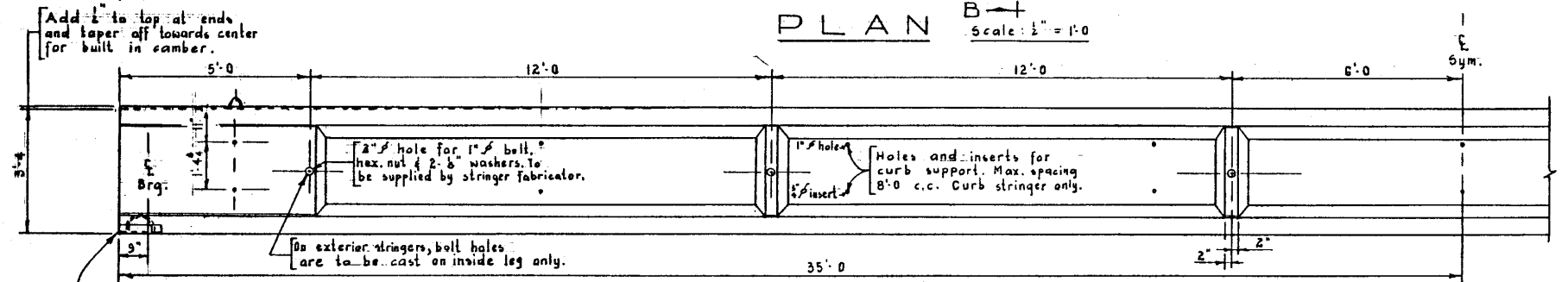
- Concrete shall be of standard weight aggregate with a maximum size of 3". Minimum compressive strength shall be 5000 p.s.i. at 28 days.  
 - Entrained air shall fall between the limits of 4.5% ± 1%.



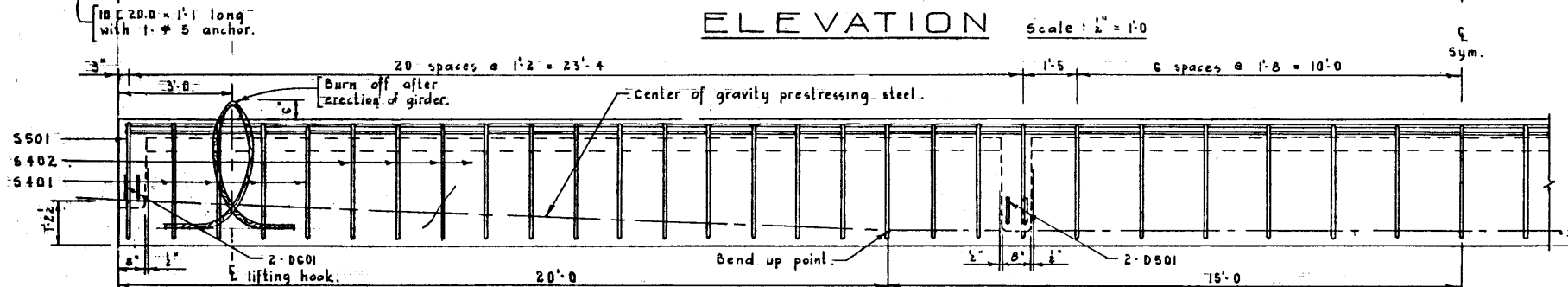
Skewed stringer.



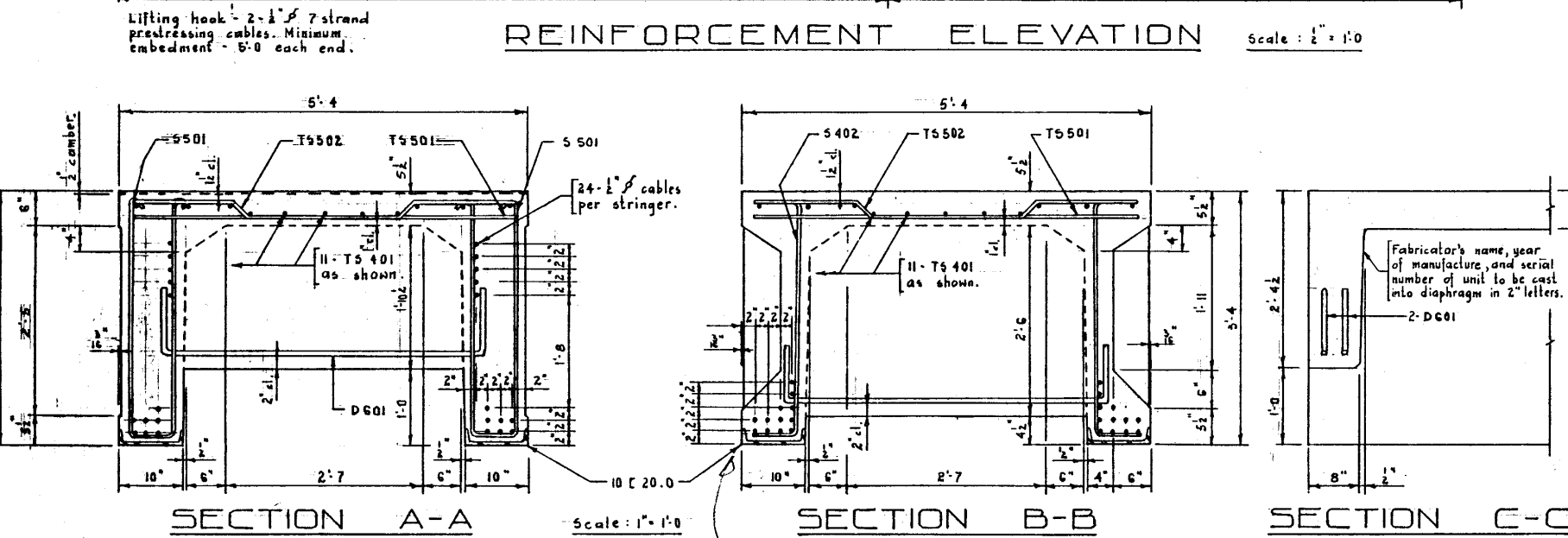
PLAN Scale: 1/2" = 1'-0"



ELEVATION Scale: 1/2" = 1'-0"



REINFORCEMENT ELEVATION Scale: 1/2" = 1'-0"



SECTION A-A Scale: 1" = 1'-0"

SECTION B-B

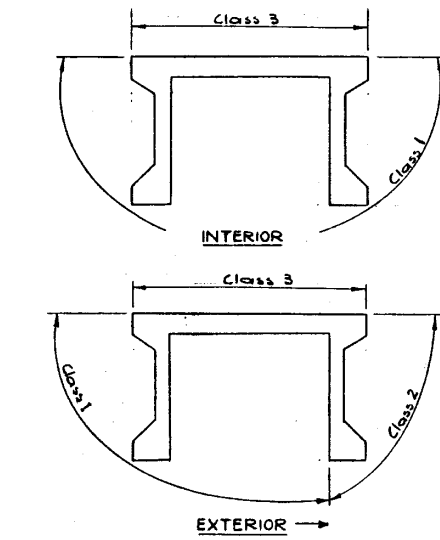
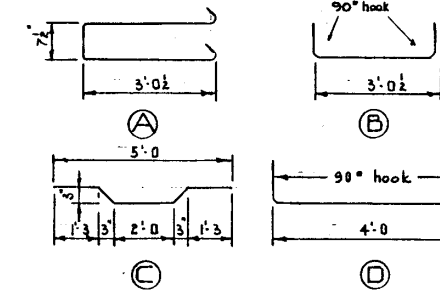
SECTION C-C

**BAR LIST**

Mark.	Size.	No.	Type.	Length.	Weight.
S 401	4	16	A	7'-7"	81
S 402	4	90	B	4'-3"	256
T5 501	5	87	Str.	5'-0"	454
T5 502	5	43	C	5'-2"	232
T6 401	4	22	Str.	35'-0"	522
D 601	6	4	D	5'-0"	35
D 501	5	4	D	5'-0"	23
S 501	5	4	A		32
Total lbs.					1,635

**BAR TYPES N.T.S.**

(All bar dimensions are out to out.)



**CONCRETE FINISHES**

NO.	DATE	DESCRIPTION	BY
REVISIONS			

**FABRICATION**

Reinforcement: Diameters of all bends shall conform to the recommended minimum, and all hooks, unless otherwise noted, shall conform to the recommended sizes detailed in the A.C.I. Manual of Standard Practice for Detailing Reinforced Concrete Structures.  
 Prestressing Steel - Initial tensioning load = 25.2 k/cable. The stringer shall have a cylinder strength of 4000 p.s.i. before the prestressing force is transferred to the stringer.  
 The fabricator shall submit shop drawings and they shall be approved by the Department before fabrication is started. The checking of shop drawings is to be considered as assisting the fabricator and shall not relieve him of responsibility for error or omissions. Units are to conform to the requirements of the Bridge Branch Specifications for Prestressed Concrete Bridge Units.

**ERECTION**

• Lifting for... shall be vertical at all times.  
 • Stringer... shall be vertical at all times.

**OBSOLETE**  
**UNPERSERVED**  
**UNPERSERVED**

**PRESTRESSED CONCRETE 70'-0" CHANNEL TYPE STRINGER**



GOVERNMENT OF THE PROVINCE OF ALBERTA  
 DEPARTMENT OF HIGHWAYS  
 BRIDGE BRANCH, EDMONTON

FILE NO.	HWY. NO.	DWG. NO.
SCALE	Noted.	5-835
STREAM	SHEET	OF

DESIGNED BY Robert L. Deller DATE June 19 63  
 CHECKED BY DATE June 20 63  
 DATE June 20 63

1:10 REINFORCEMENT CENTER  
 0-2-12C