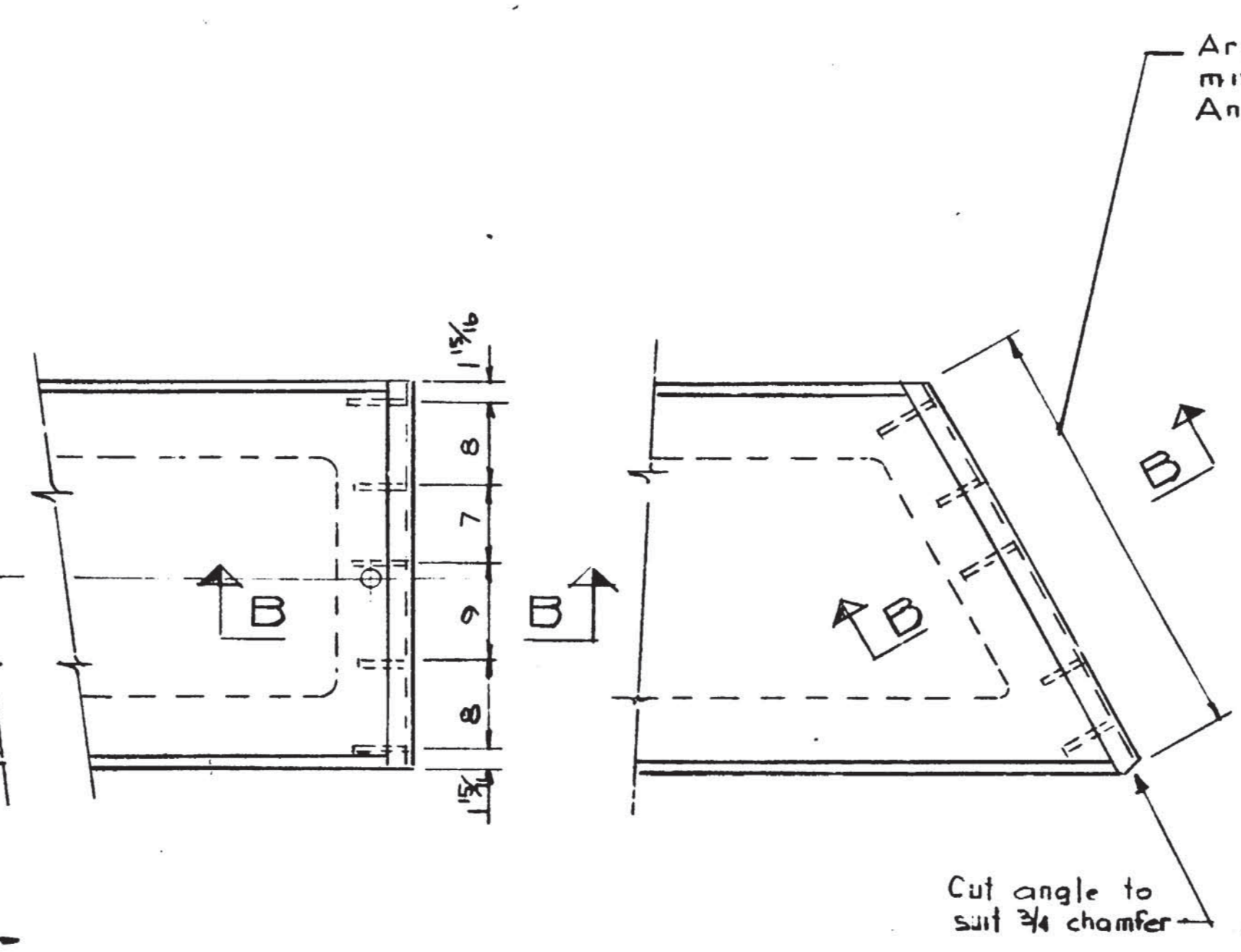
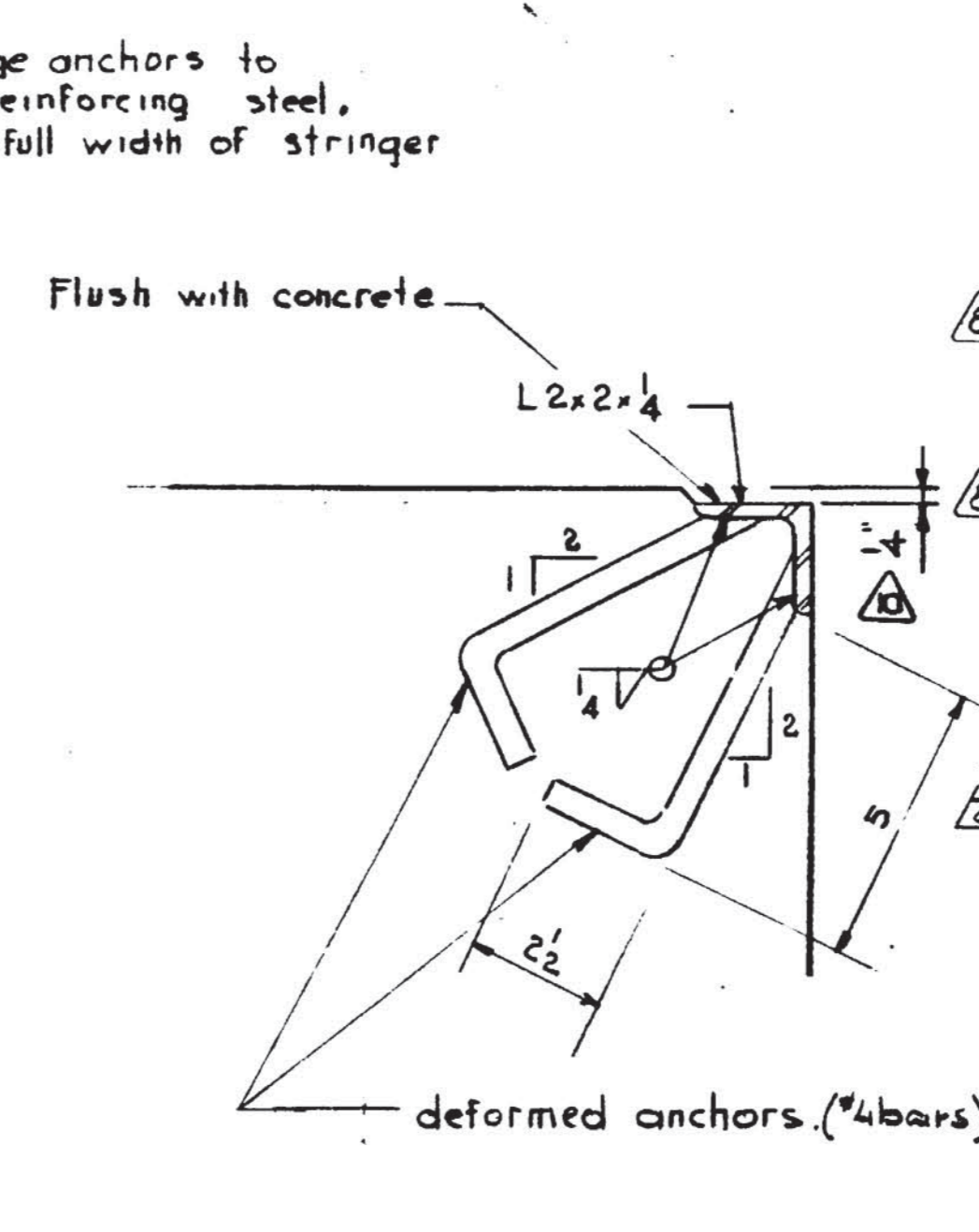


PLAN VIEW
Scale 3/4" = 1'-0"

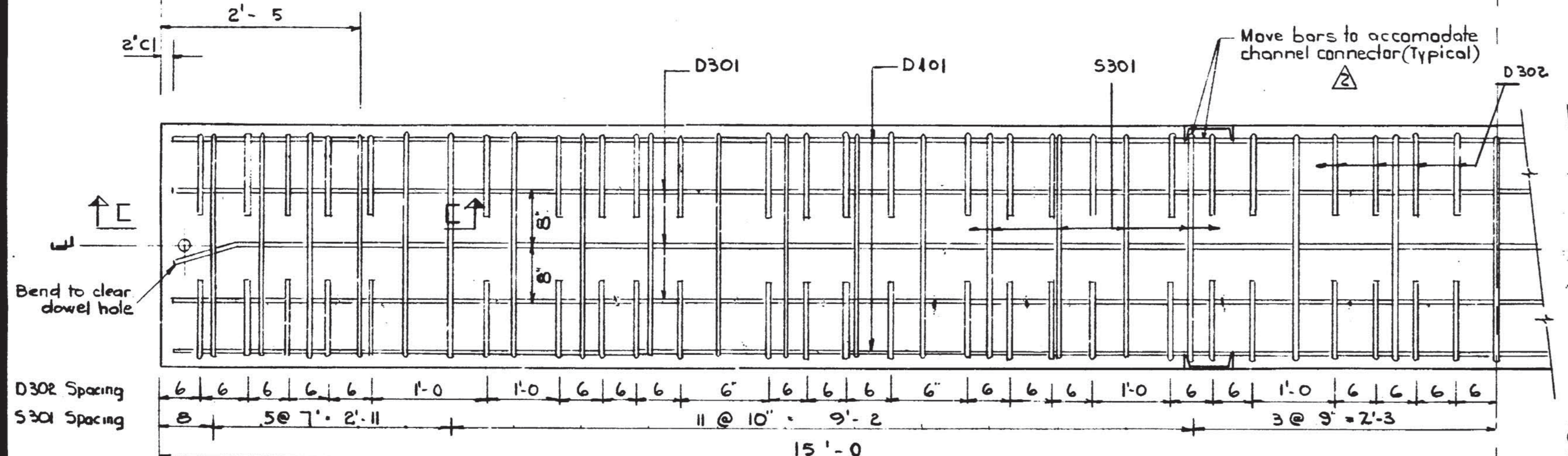


PROTECTION ANGLES
Scale 3/4" = 1'-0"

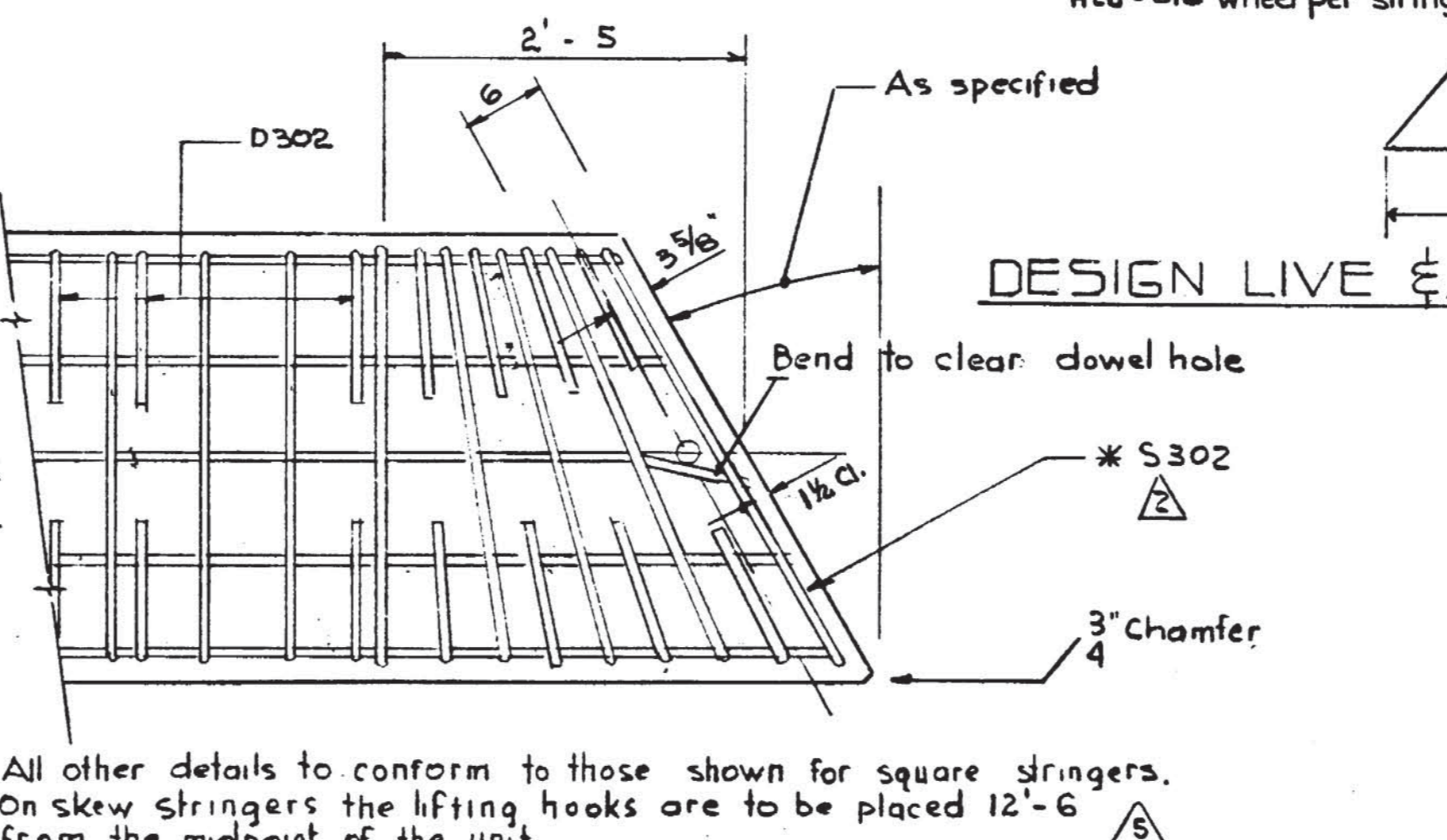


SECTION B-B
Scale 3/4" = 1'-0"

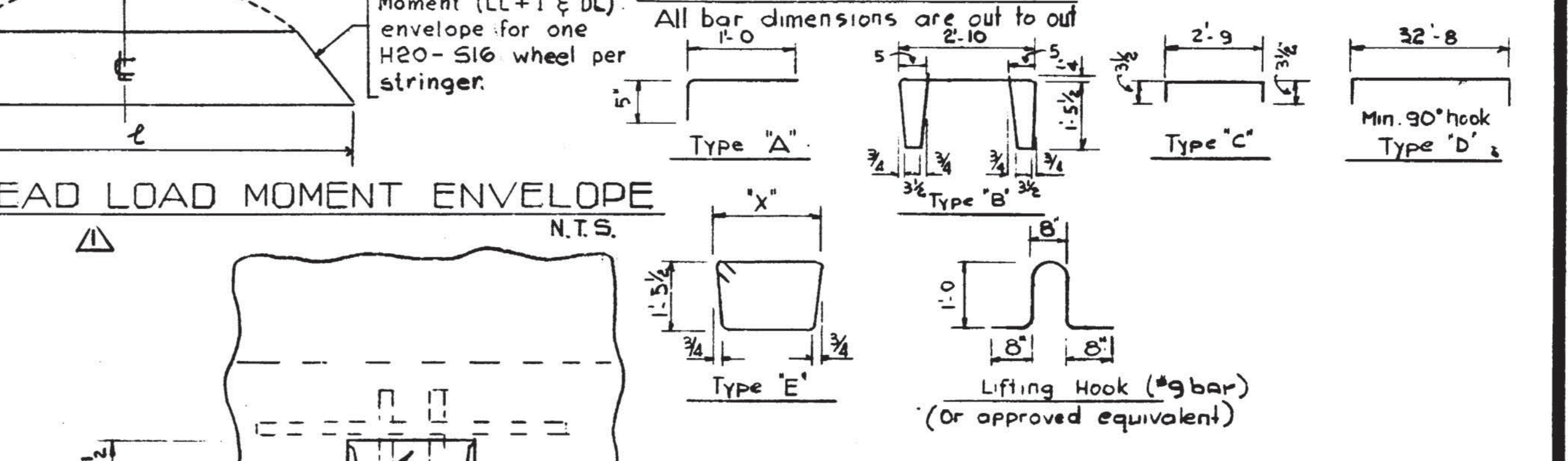
MARK	SIZE	NO	TYPE	X	LENGTH	WEIGHT
D 301	3	3	Str		29' - 8"	33
D 302	3	100	A		1' - 5"	53
S 301	3	39	B		9' - 4"	137
D 401	4	2	Str		29' - 8"	44
D 501	5	30	Str		2' - 8"	83
G 701	7	2	Str		25' - 0"	102
G 1002	10	2	Str		29' - 0"	250
G 1003	10	2	D		31' - 1"	268
S 302	3	2	E	Varies		
G 301	3	4	C		3' - 4"	5
D 303	3	23	Str		2' - 8"	29
Total weight:						1000



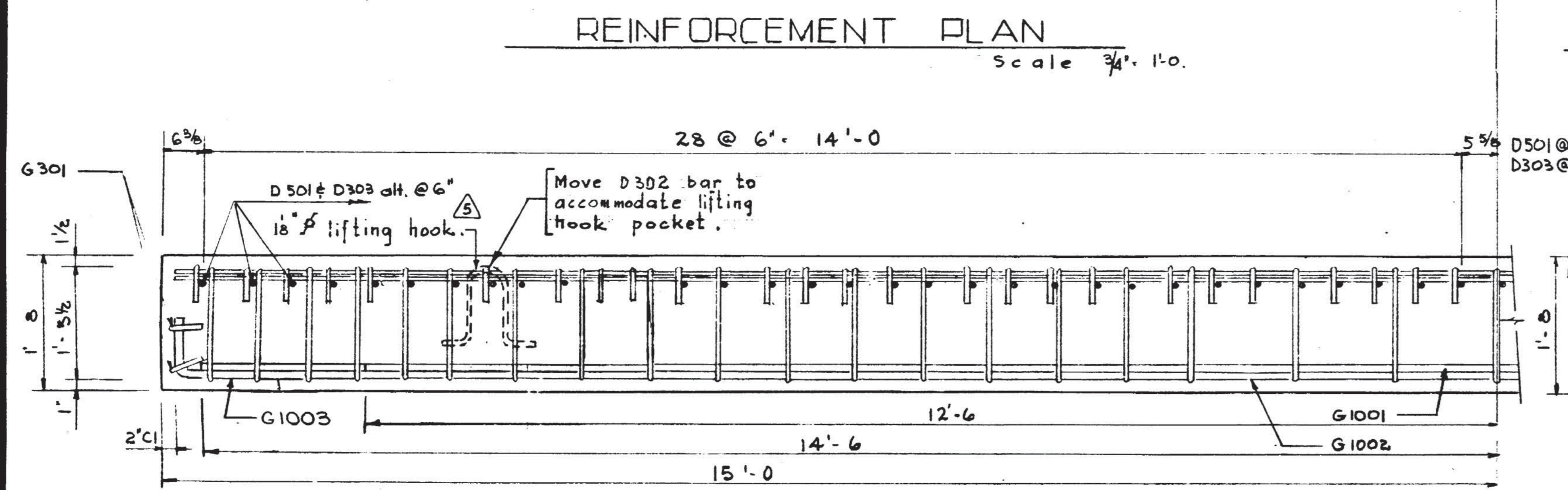
REINFORCEMENT PLAN
Scale 3/4" = 1'-0"



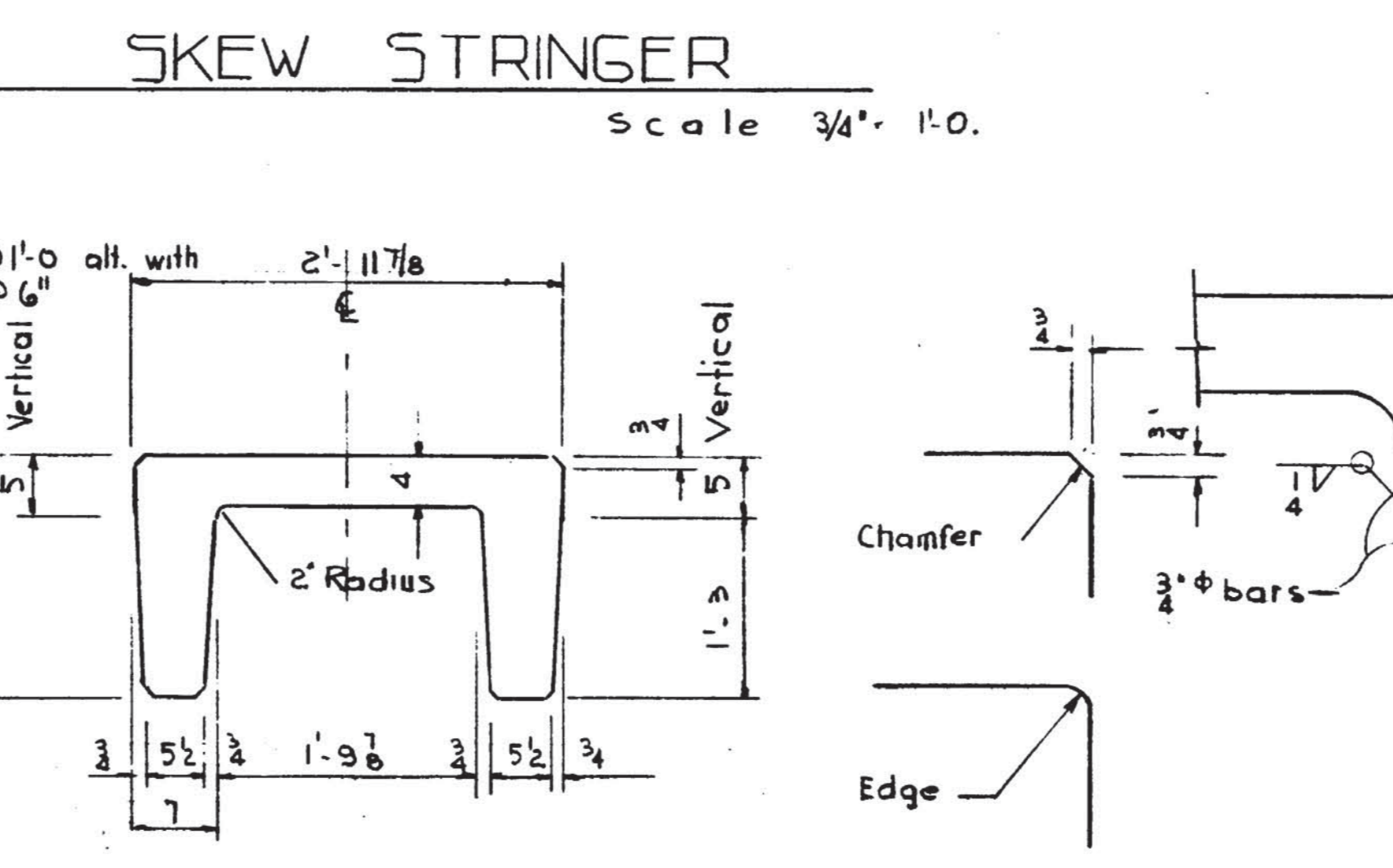
DESIGN LIVE & DEAD LOAD MOMENT ENVELOPE
Scale 3/4" = 1'-0"



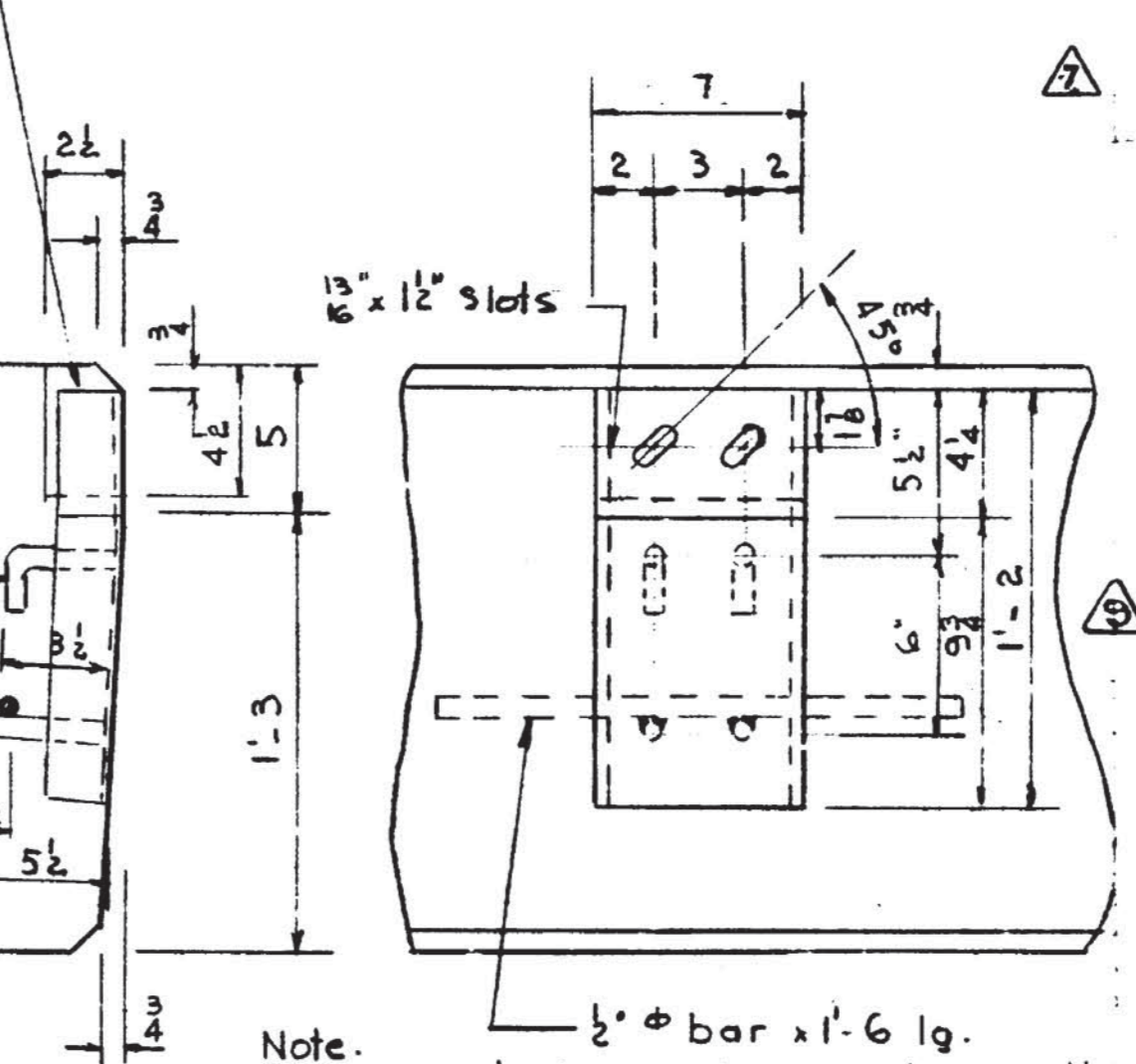
BAR TYPES
All bar dimensions are cut to suit
Min. 90° hook
Type 'D',
Lifting Hook (#9 bar)
(Or approved equivalent)



REINFORCEMENT ELEVATION
Scale 3/4" = 1'-0"

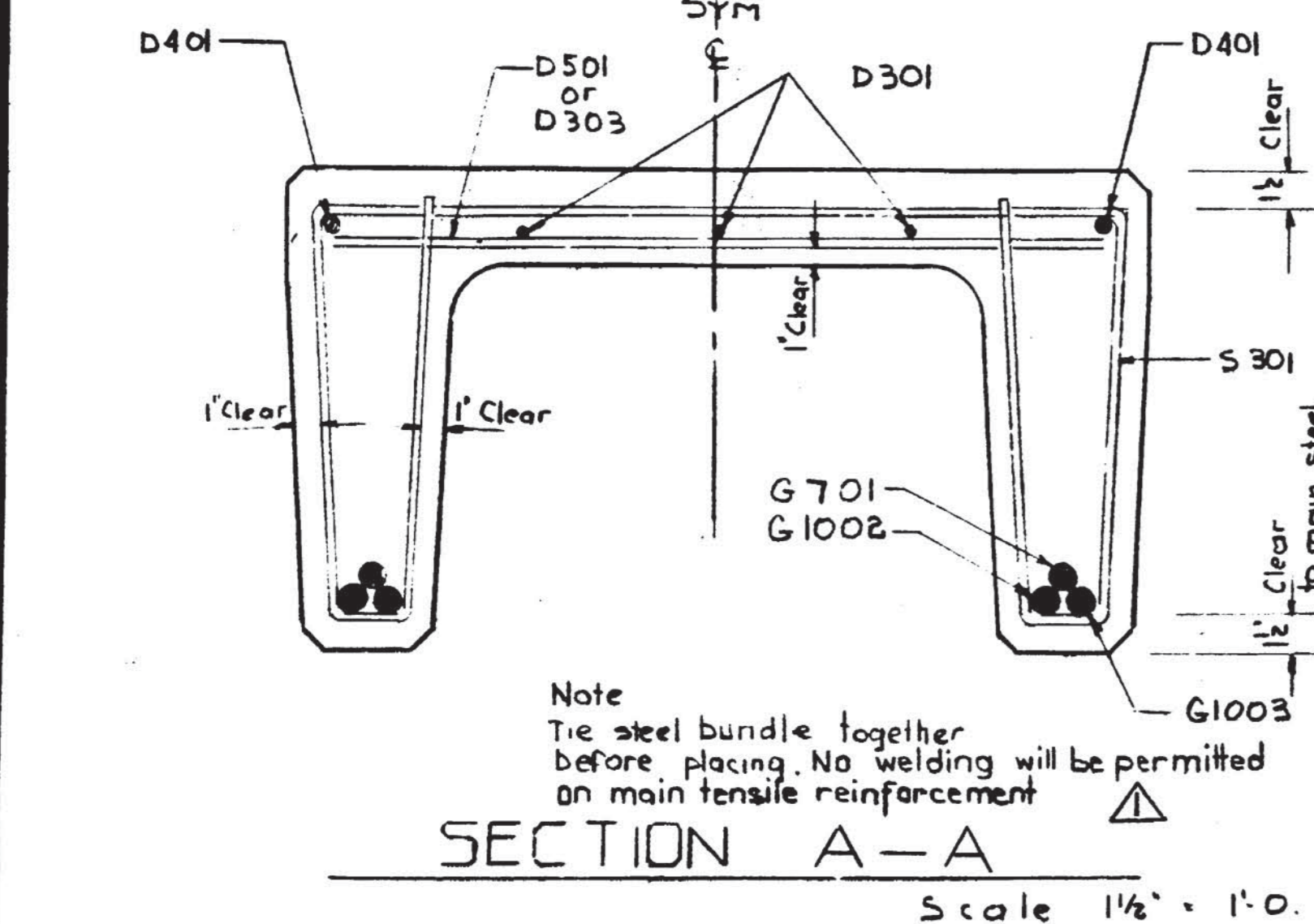


SECTION A-A
Scale 3/4" = 1'-0"

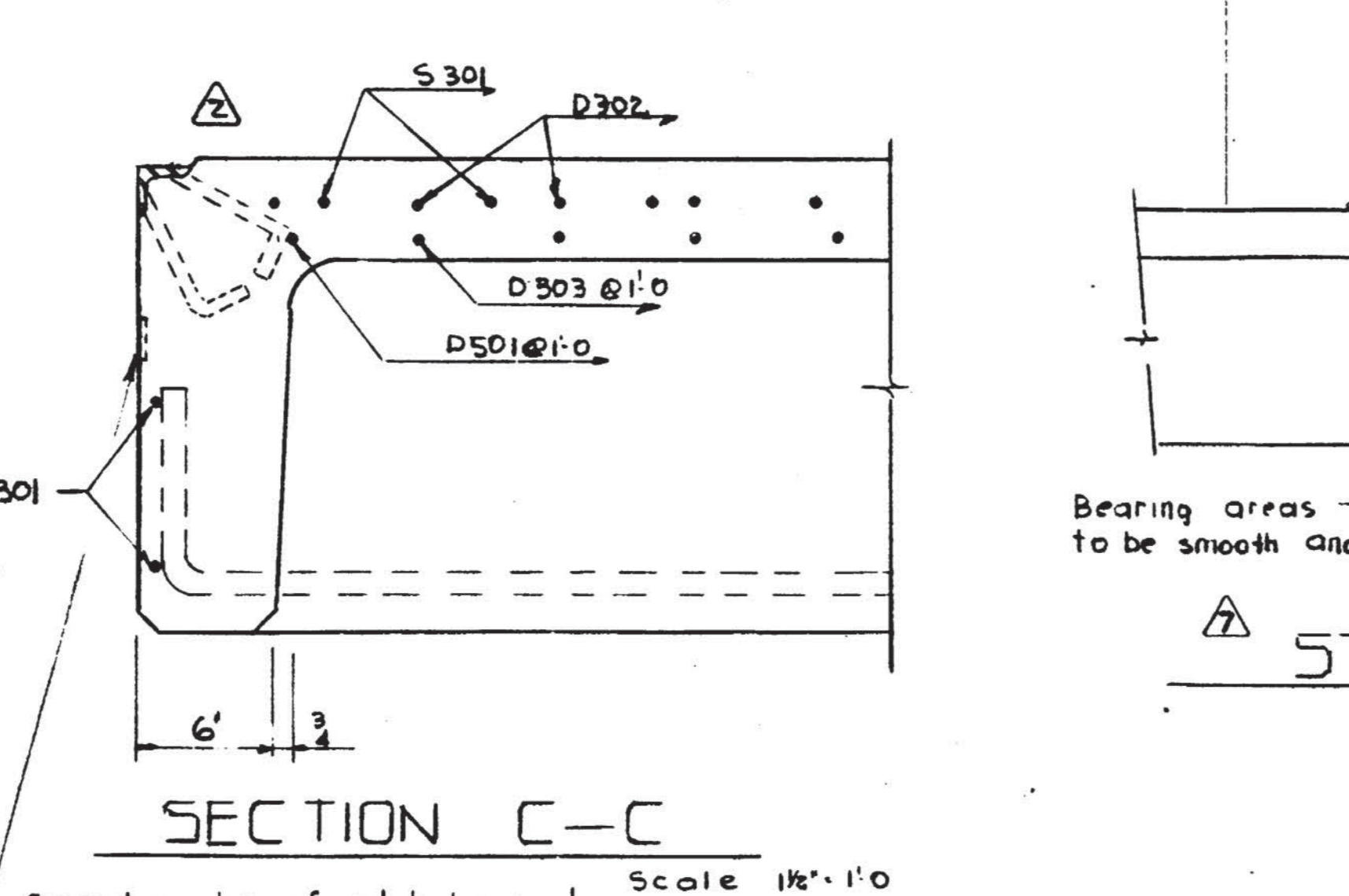


STRINGER CONNECTORS
Scale 1 1/2" = 1'-0"

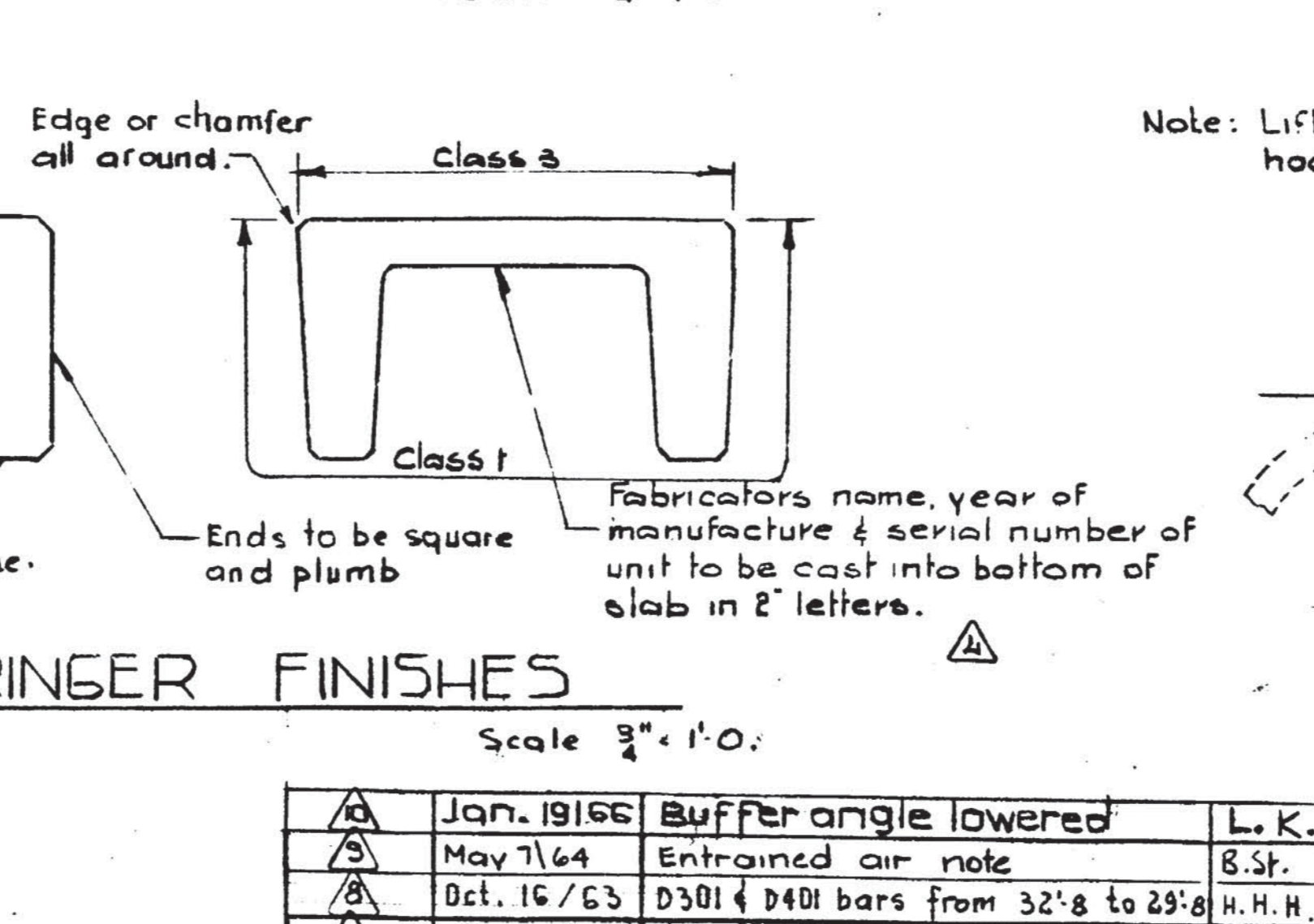
GENERAL NOTES:
DESIGN
Live Load - A.A.S.H.O. H20 - S16 modified as shown.
Dead Load - includes allowance for 2" wearing surface.
Concrete - to be standard weight aggregates with maximum aggregate size of 3/4" inch. Minimum 28 day compressive strength to be 4000 p.s.i.
CONSTRUCTION
Entrained Air shall be not less than 5%.
Diameters of all bars shall conform to the recommended minimums and all hooks, unless otherwise noted shall conform to the recommended sizes detailed in the A.C.I. Manual of Standard Practice for Detailing Reinforced Concrete Structures.
Each stringer shall have a cast camber of 1/2 inch.
All acute angles on skewed stringers shall have 1 inch chamfer.
Concrete shall attain at least 30% of the specified 28 day compressive strength before the units are stripped from the forms or lifted.
Each connector is to be supplied with one 1/2" x 2" H.T. bolt, one heavy hex semi finished nut and three hardened washers.
Units are to conform to the requirements of the Alberta Government Specification for the Manufacture of Precast Concrete Bridge Units.
ERECTION
Any free space between the connectors shall be filled with washers.



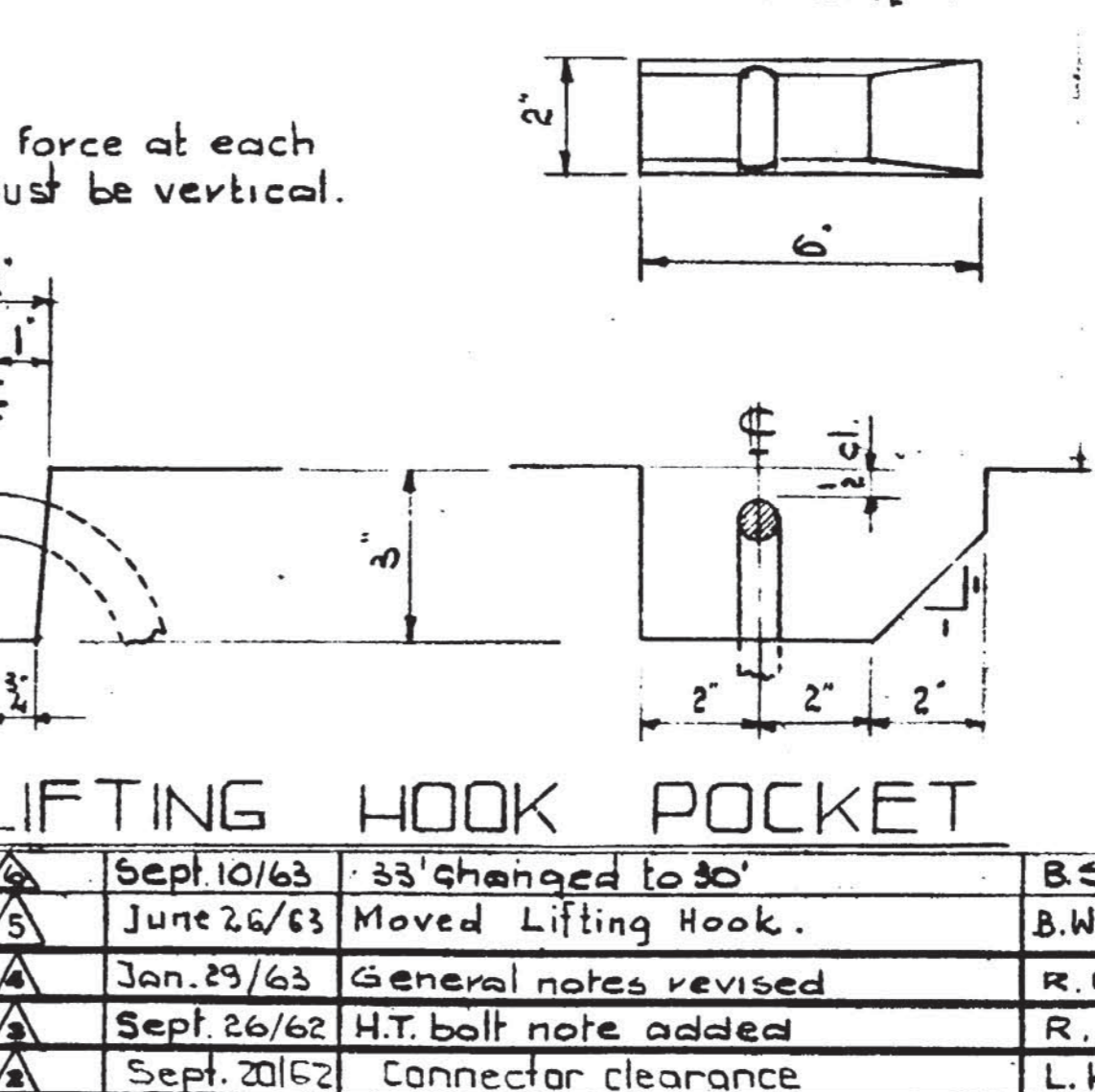
SECTION A-A
Scale 1 1/4" = 1'-0"



SECTION C-C
Scale 1 1/4" = 1'-0"



STRINGER FINISHES
Scale 3/4" = 1'-0"



LIFTING HOOK POCKET
Scale 1 1/2" = 1'-0"

NO.	DATE	DESCRIPTION	BY
1	Jan. 1966	Buffer angle lowered	L. K.
2	May 7/64	Entrained air note	B.S.P.
3	Oct. 16/63	D301 & D401 bars from 32" to 29"	H.H.H.
4	Sept 1963	General notes & finishes	R.E.

NO.	DATE	DESCRIPTION	BY
5	Sept 10/63	33" changed to 30"	B.S.P.
6	June 26/63	Moved Lifting Hook.	B.W.S.
7	Jan. 23/63	General notes revised	R.E.
8	Sept. 26/62	H.T. bolt note added	R.E.
9	Sept. 20/62	Connector clearance	L.K.
10	Aug. 28/62	General revision	L.K.

PRECAST CONCRETE
30 FT. SPAN TYPE "HC"
INTERIOR STRINGER

GOVERNMENT OF THE PROVINCE OF ALBERTA
DEPARTMENT OF HIGHWAYS
BRIDGE BRANCH, EDMONTON

FILE NO.	HWY. NO.	DWG. NO.
LOCATION	SCALE as shown	S 837
STREAM	SHEET OF	

DESIGNED BY: R.E.B. DATE: May 19 62
 CHECKED BY: R.E.B. DATE: May 19 62
 DATE: May 19 62