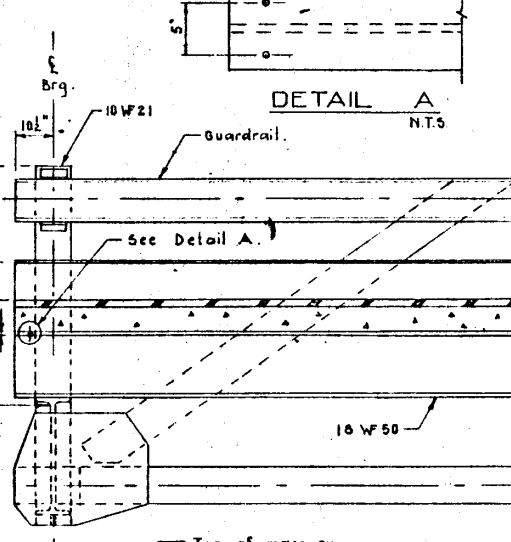
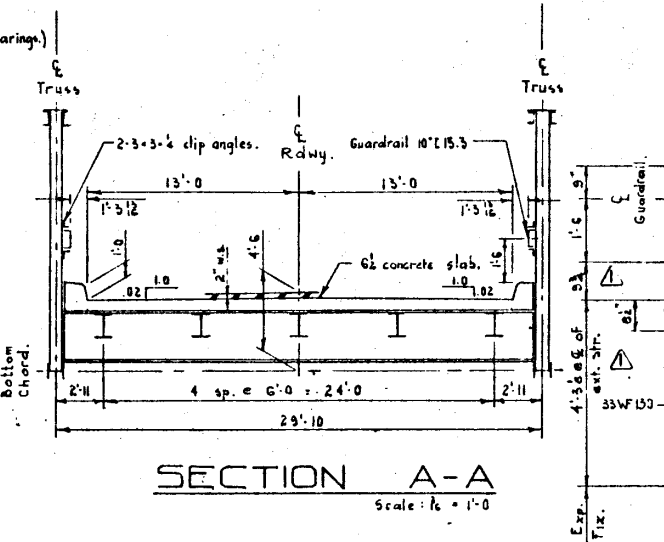
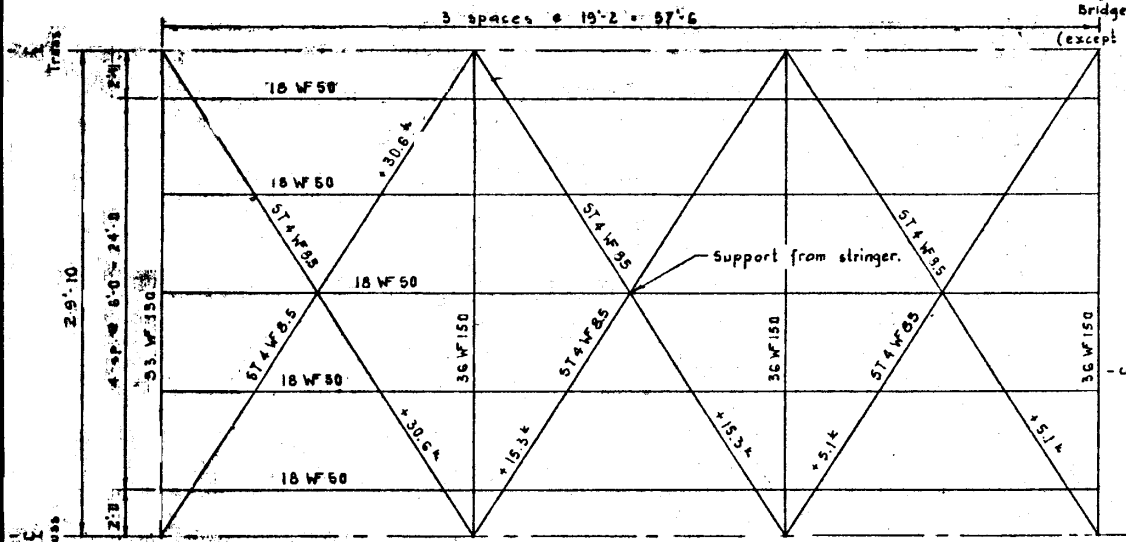
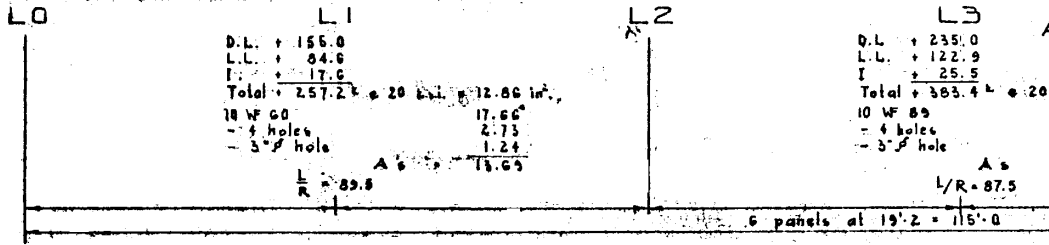


**Reaction**  
 D.L. 131.0 k/line  
 L.L. 72.8  
 I. 76.9  
 Total 280.7  
 18 WF 60  
 4 holes  
 3" hole  
 A s  
 89.8



**INTERIOR FLOOR BEAM**

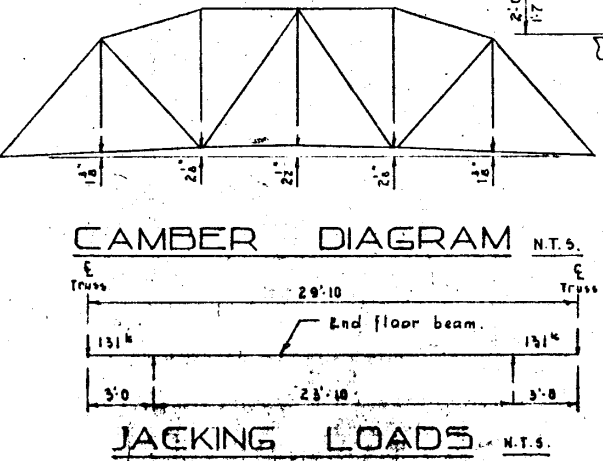
Shear: D.L. 35.7 k
L.L. 81.8
I. 15.4
102.6
Moment: D.L. 276
L.L. 424
I. 127
827 ft.k. 5 req'd = 496 in.
36 WF 158 5 supplied = 582.5 in.

**END FLOOR BEAM**

Shear D.L. 19.1 k
L.L. 49.0
I. 14.7
82.8
Moment D.L. 147
L.L. 401
I. 120
666 ft.k. 5 req'd = 400 in.
33 WF 130 5 supplied = 446.8 in.

**STRINGERS**

Shear D.L. 6.6 k
L.L. 22.1
I. 6.6
35.3 k
Moment D.L. 31.8
L.L. 83.6
I. 25.1
140.5 ft.k. 5 req'd = 84.3 in.
10 WF 50 5 supplied = 89.0 in.



**GENERAL NOTES**  
**DESIGN**  
 • A.A.S.H.O. 1961 including interim specifications.  
 • Loading - H20 - S16 - 44  
 Deck - 6" concrete + 2" asphalt 1.610 k/ft./truss.  
 Floor steel and handrail 286 k/ft./truss.  
 Truss - 379 k/ft./truss.  
 2.275 k/ft./truss.

**MATERIALS**  
 • All structural steel shall conform to A.S.T.M. Specification A36

**CONSTRUCTION**  
 • Bearings to have dome plates to provide for deflection.  
 • All steel surfaces not in contact with steel or concrete to receive one shop coat red lead, iron oxide, oil alkyd type paint conforming to requirements of the Canadian Government Specification Board - Spec. 1-CP-140A.  
 • All main member field connections to be made with 3/4" high tensile bolts and hardened washers and all bracing connections may be made with 1/2" high tensile bolts and hardened washers conforming to the requirements of A.S.T.M. - A325.  
 • Camber: Truss shall be cambered as shown.  
 • All connections are to be considered as "Friction Type."

The Fabricator shall submit shop drawings and they shall be approved by the Department before fabrication is started. The checking of shop drawings is to be considered as assisting the fabricator and shall not relieve him of responsibility for error or omissions.  
 Fabrication is to be in accordance with the A.A.S.H.O. Specifications for Highway Bridges, 1961 edition.  
 All shop splices are to be shown on the shop drawings.  
 The supply of the bridge shall be in accordance with the Province of Alberta, Department of Highways Specification for the Supply of Structural Steel for Bridges. (Specification No. B160-63.)

**Superseded**  
**SUPERSEDED**  
 No. 5-902  
 See Revision No. 2

**STANDARD 115 FT PONY TRUSS  
 26'-0" ROADWAY  
 STRESS SHEET**

GOVERNMENT OF THE PROVINCE OF ALBERTA  
 DEPARTMENT OF HIGHWAYS  
 BRIDGE BRANCH, EDMONTON

FILE NO.	HWY. NO.	Noted	DWG. NO.
LOCATION	SCALE	Sheet	5840
STREAM	SHEET	OF	

NO.	DATE	DESCRIPTION	BY
1	Jan. 6/66	Superseded by dwg. No. 5-902	R.E.B.
2	Oct 21/66	End detail dimensions	B.S.P.

DESIGNED BY Robert J. Miller DATE 5-11-65  
 DRAWN BY G. J. S. Miller DATE 5-25-65  
 CHECKED BY DATE