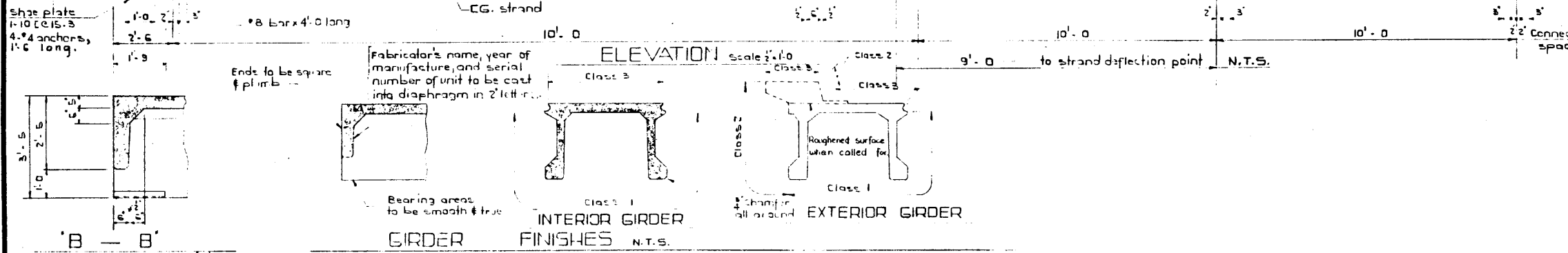
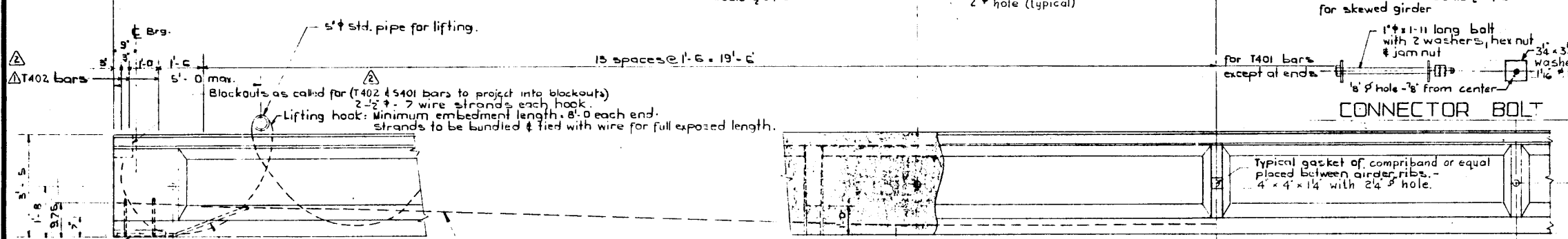
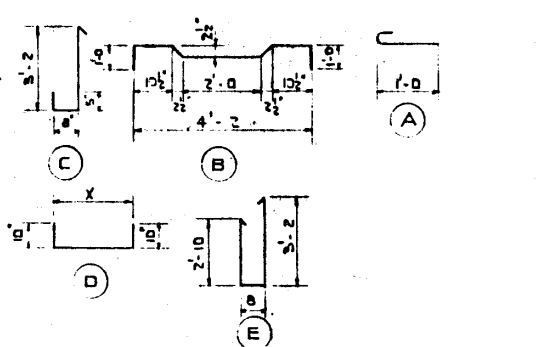


BAR LIST for unskewed girder							
MARK	SIZE	NO	TR	W	L	LENGTH	WEIGHT
S 301	3	144	A			1'-6"	81
S 401	4	14	Str.			23'-0"	215
S 402	4	54	B			6'-4"	228
S 501	5	110	Str.			4'-9"	545
T 401	4	54	C			4'-9"	171
D 601	6	4	D	4'-2"		5'-10"	35
D 602	6	4	D	6'-0"		6'-8"	40
T 402	4	12	E			7'-6"	61
T 601	6	8	Str.			2'-11"	35

Total lbs: 1,370
1,450
1,411



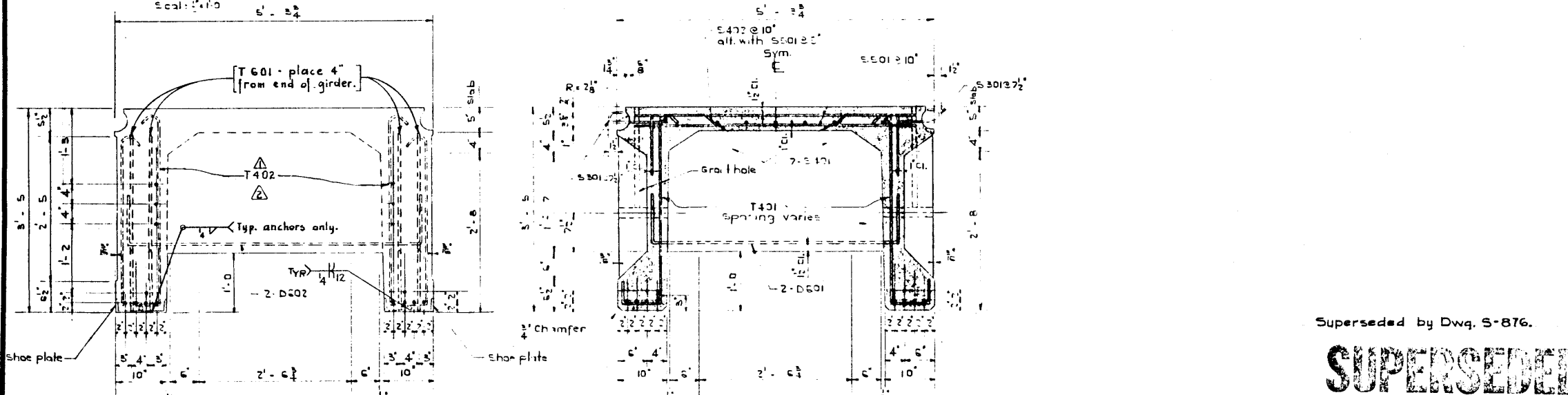
GENERAL NOTES:
DESIGN
A.A.S.H.O. 1961 Specification
Loading: 0.97 of one wheel line of an H20-S16-44 truck plus full dead load plus 2" wearing surface

MATERIALS
Concrete shall be of standard weight aggregate with a maximum size of 3". Minimum compressive strength shall be 5000 p.s.i. at 28 days. Entrained air shall be not less than 5%.
Prestressing steel is 7/16" 7 wire strand.

FABRICATION
Reinforcement: Diameters of all bends shall conform to the recommended sizes and all hooks, unless otherwise noted shall conform to the recommended sizes detailed in the A.C.I. Manual of Standard Practice for Detailing Reinforced Concrete Structures.
Prestressing steel: Initial tensioning load = 25.2 k/strand
Design Load = 20.2 k/strand
Concrete must attain 4000 p.s.i. compressive strength before the prestressing force is transferred

Units are to conform to the requirements of the Alberta Bridge Branch Specifications for the Manufacture of Prestressed Concrete Bridge Piers.

ERECTION
Lifting force at each hook must be vertical at all times.
Girder surface must be level at all times.



NOTE:
18 - 1/2" 7 wire strand, required per girder

Superseded by Dwg. S-876.

SUPERSEDED

NO.	DATE	DESCRIPTION	BY
1	Oct. 2/64	No. of strands added	V.G.B.
2	July 3/64	End block rebars.	D.H.Q.
3	June 2/64	End block rebars	D.H.Q.

PRESTRESSED CONCRETE
45'-0" TYPE FC GIRDER

GOVERNMENT OF THE PROVINCE OF ALBERTA
DEPARTMENT OF HIGHWAYS
BRIDGE BRANCH, EDMONTON

FILE NO. _____ HWY. NO. _____ DWG. NO. **S-849**
LOCATION _____ SCALE _____ SHEET _____ OF _____

DESIGNED BY: L. Kohlmann
DATE: February 1964
CHECKED BY: _____
DATE: _____

SUPERSEDED