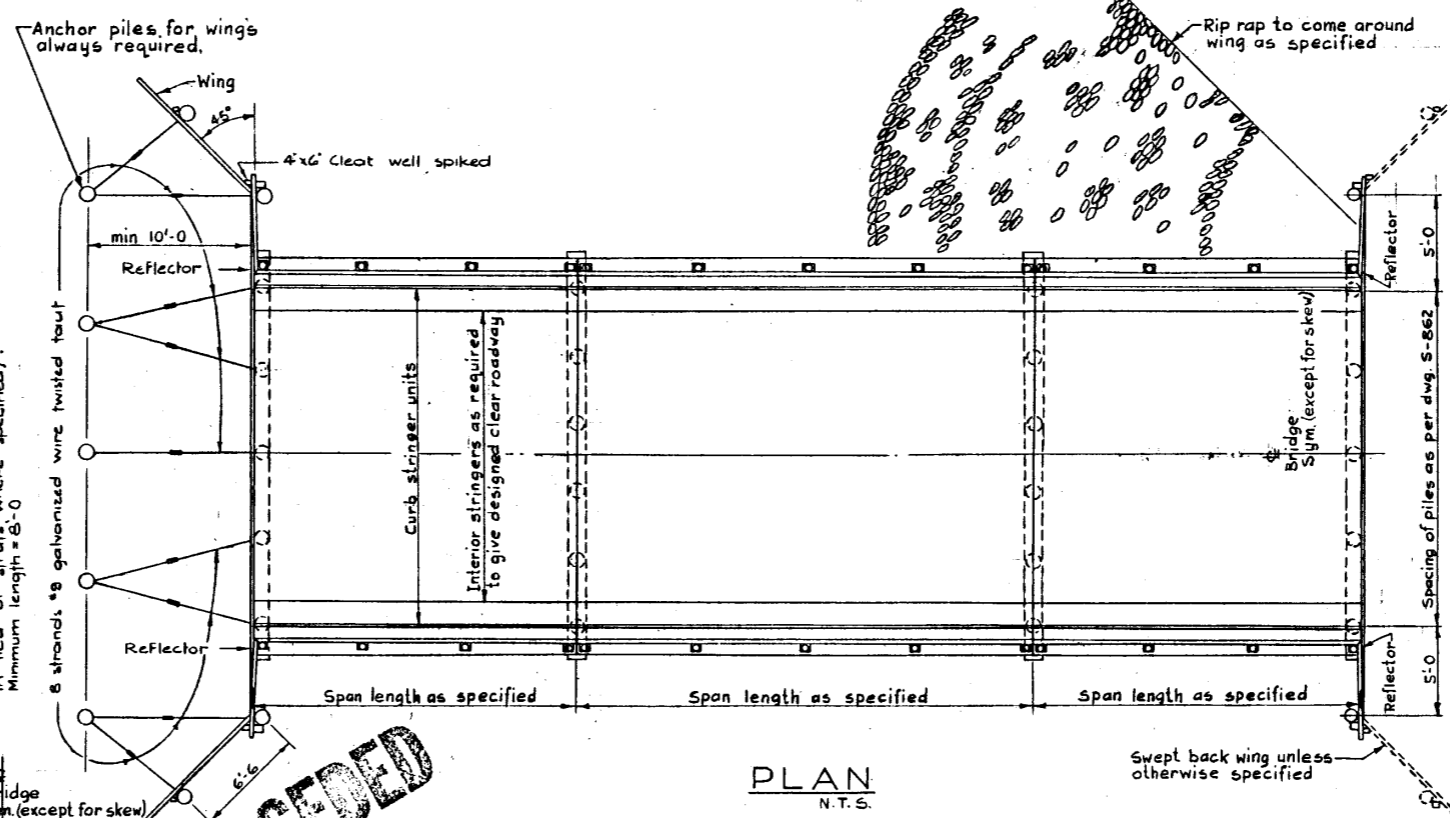


RAIL SPLICES
 28' Spans Only (Not applicable when deep beam type guardrail specified).



MARK	SIZE	TYPE	WASHERS	PLACING #NO REQUIRED
1	3/4"x22	Drifts		Caps & subcaps to piles & bent.
2	3/4"x24	Headless Drifts		Stringers & curbs to caps 2 per stringer, 2 per curb
3	1/2"x8	Carriage Bolts	2-3/8 Flat	Handrail to posts - 2 per post
4	1/2"x32	Carriage Bolts	1-3/8 Flat	Handrail splice - 4 per splice
5	as required	Machine Bolts	2-3/8 O.G.	Cap splice - 4 per splice
6	3/4"x22	Machine Bolts	2-3/8 O.G.	Double sway brace to cap
7	3/4"x20	Machine Bolts	2-3/8 O.G.	Single sway brace to cap
8	3/4"x20	Machine Bolts	2-3/8 O.G.	Tower brace
9	1/2"x8	Machine Bolts	2-1/2 O.G.	Tower brace splice
10	3/4"x8	Dowel		Pile splice - 2 per splice
11	3/8"x16	Machine Bolts		Pile splice - 8 per splice
12	3/8"x16	Machine Bolts	2-3/8 O.G.	Handrail post - 2 per post
13	1/2"x12	Carriage Bolts		Handrail splice - 2 per splice
14	1/2"x12	Carriage Bolts	2-1/2 Flat	Handrail post - 2 per post
15	5"φ	Pipe post		Curb stringer
16	7 1/2"x8 1/2"φ	Splice plate		Timber handrail

GENERAL NOTES

- For details of Standard 20' & 28' Span Precast Units see dwgs: S-780, S-781, S-791, S-792.
- When deep beam type guardrail is specified, ensure that splice lap is in direction of traffic.
- Two reflectors at each end of bridge.
- Pile splices to be driven a min. of 5'-0" below ground level.
- Bottom pile may be untreated.
- A 12"x12" cap may be used for a 20' abutment span with a 21' clear roadway. A 12"x14" cap is used in all other cases.
- Piles to be driven to a min. of 20 tons' bearing capacity.

TREATMENT OF TIMBER - IMPORTANT

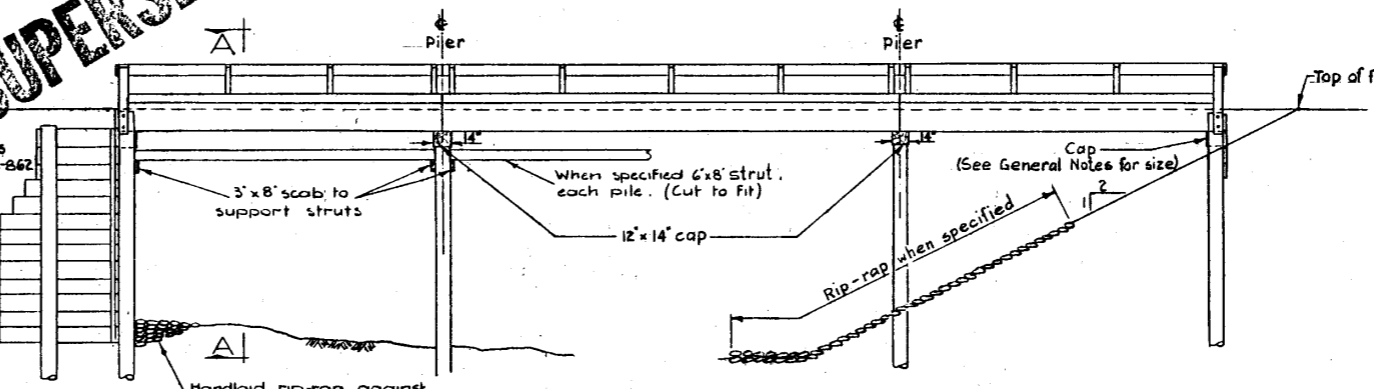
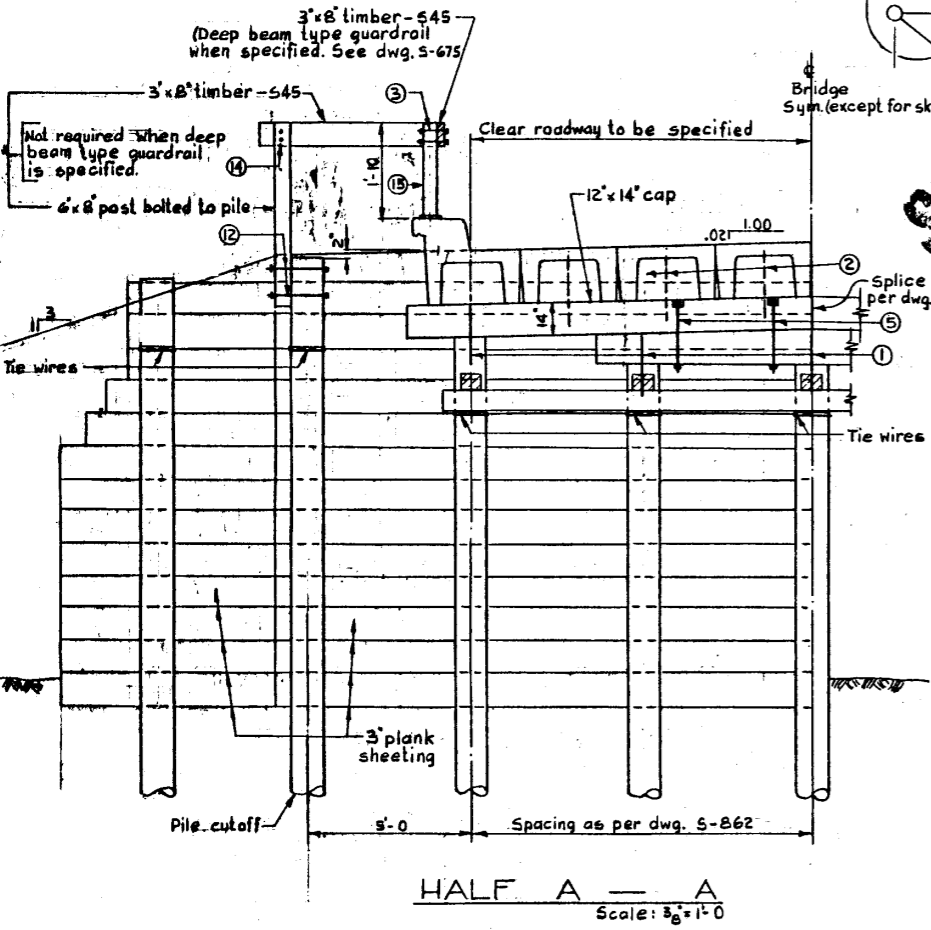
- Pile tops under caps shall be coated with 3 applications of creosote oil and thoroughly covered with roofing pitch.
- Exposed pile tops shall be treated as in (a) and in addition shall be covered with 12 ga. galvanized sheet iron of a size 4" greater in diameter than the pile. Neatly trim iron, bend down, and fasten to pile with galvanized roofing nails.
- Treated timber shall be carefully handled, so as to avoid breaking of outer fibers and bruising or penetrating the surface. Tools to be used only on ends of timber.
- All cuts and abrasions in treated timber, shall after careful trimming be coated with 2 applications of creosote and then be thoroughly covered with hot roofing pitch.
- Treated piles must not be dapped for sway bracing in the field.
- Bolt holes bored after treatment shall be carefully treated with creosote. Any unfilled holes shall be sealed with creosoted plugs.

PRECAST STRINGER CONNECTION (TYPE HC)

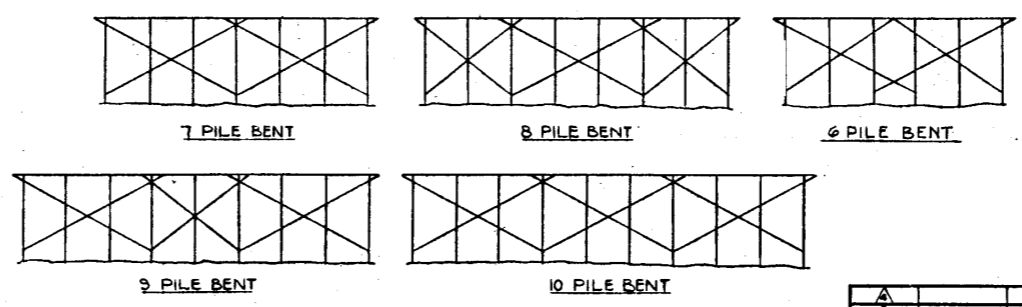
- Bolting** - Hardened washers are to be placed between the channel connections to fill up any space. The 3/4" high tensile bolts are to be tightened to 300 ft. lbs. torque.
- Grouting** - The connector holes are to be grouted with 3 parts sand to 1 part cement.

OTHER DETAILS

- Pile spacing - Dwg. S-862
- Bridge fills - Dwg. S-829
- Precast stringer units:
 - 20' HC - S-780 + S-791
 - 28' HC - S-781 + S-792
 - 33' HC - S-785 + S-785
 - 38' HC - S-786 + S-786



TYPICAL BACKWALL TYPE ABUTMENT
TYPICAL SPILL THROUGH TYPE ABUTMENT
ELEVATION
 N.T.S.



SWAY BRACING LAYOUT
 (Single storey bracing)
 (Double storey bracing to be used when height is over 14'-0")

NO.	DATE	DESCRIPTION	BY

STANDARD PRECAST BRIDGES WITH TREATED TIMBER SUBSTRUCTURE

GOVERNMENT OF THE PROVINCE OF ALBERTA
 DEPARTMENT OF HIGHWAYS
 BRIDGE BRANCH, EDMONTON

FILE NO. _____ HWY. NO. _____ DWS. NO. _____
 LOCATION _____ SCALE _____ SHEET _____ OF _____
 STREAM _____ SHEET _____ OF _____

SUPERSEDED

SUPERSEDED by S-860-69

DESIGNED BY: R. J. Stouffer
 CHECKED BY: _____
 DATE: _____