

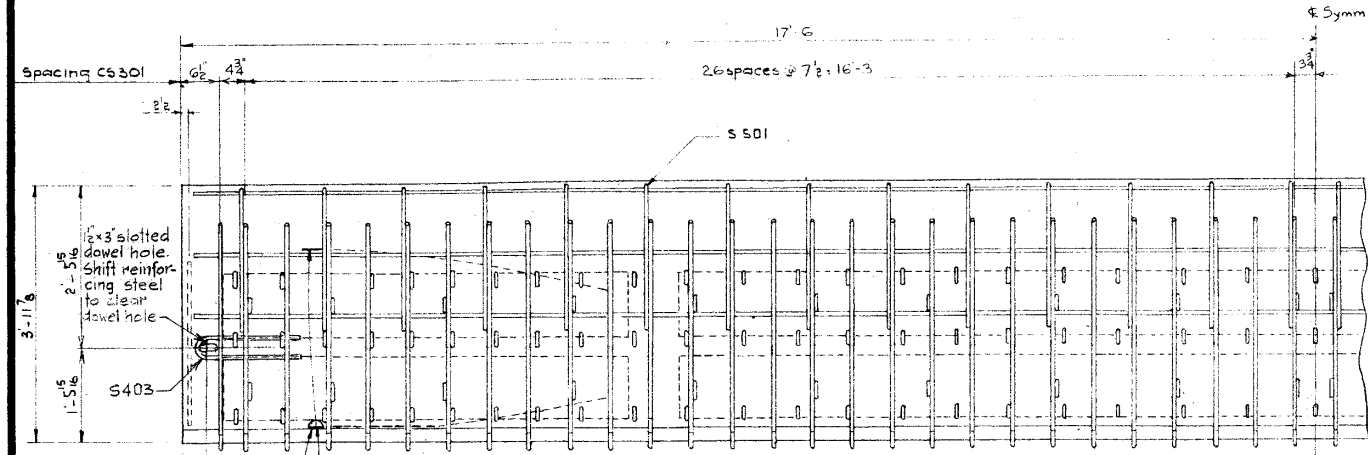
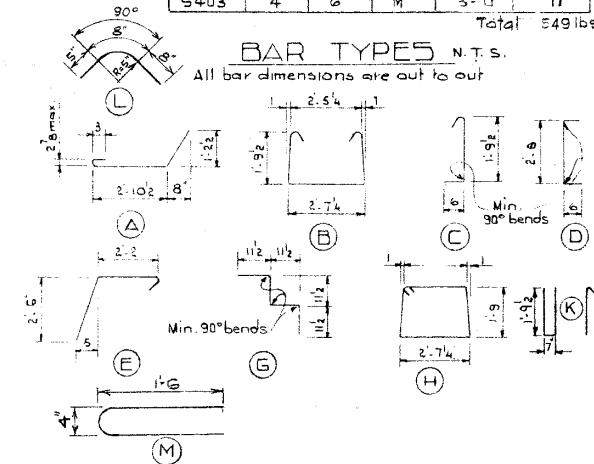
BAR LIST

Mark	Size	No.	Type	Length	Weight
S301	3	56	A	4.7	36
S302	3	43	B	6.10	110
S303	3	43	C	2.7	42
S304	3	20	G	3.10	29
S305	3	4	D	3.8	6
S401	4	2	H	9.4	12
S402	4	3	H	9.4	69
S501	5	26	E	5.2	151
E401	4	4	K	5.2	14
S306	3	14	L	1.9	9
S403	4	6	M	3.0	11

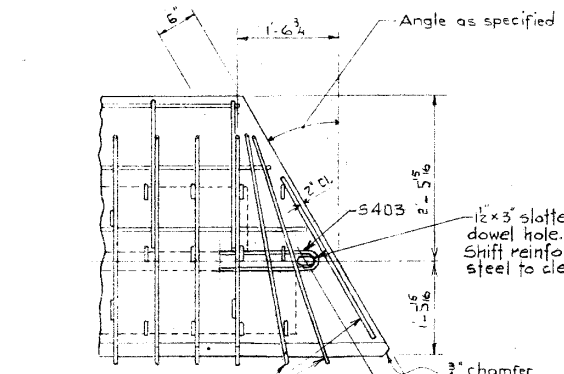
Total 549 lbs.

BAR TYPES N.T.S.

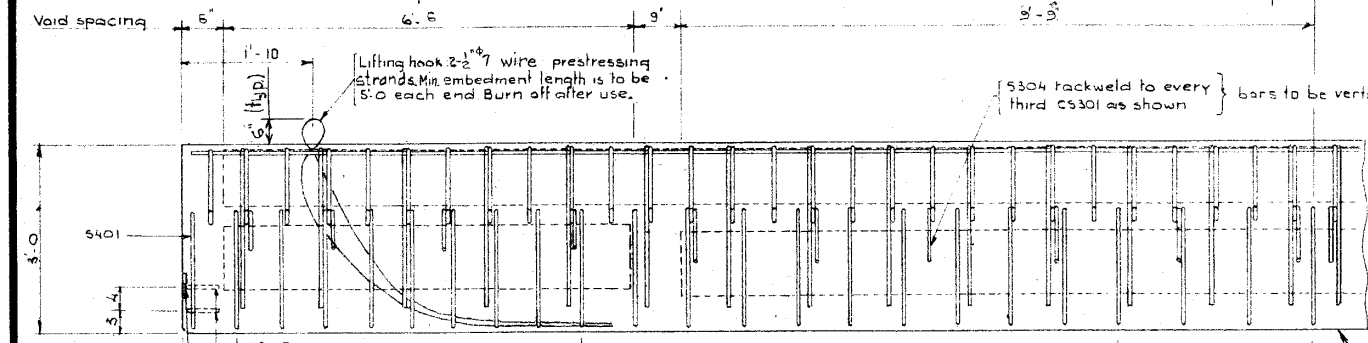
All bar dimensions are out to out



PLAN
Scale: 3/4" = 1'-0"



SKewed END STEEL



ELEVATION
Scale: 3/4" = 1'-0"

Fabricator's name, year of manufacture & serial no. of unit to be cast into bottom of slab in 2 letters.

Serial number of unit to be cast into end of unit in numbers 2" high

GENERAL NOTES

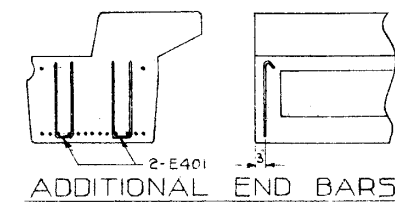
DESIGN
A.A.S.H.O. 1961 Specifications except allowable initial concrete stress = 285 p.s.i. in tension.
Loading: 3/5 of one wheel line of an H20-S16-44 truck plus full dead load plus 2" wearing surface.

MATERIALS
Concrete shall be of standard weight aggregate with a maximum size of 3/4". Minimum compressive strength shall be 5000 p.s.i. at 28 days. Air entrainment shall be not less than 5%.

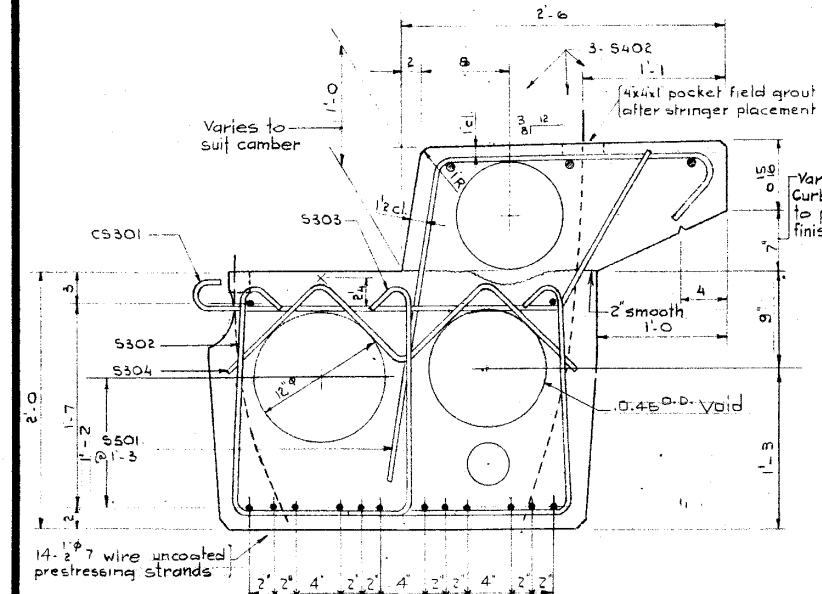
FABRICATION
Reinforcement: Diameters of all bends and details of all hooks unless otherwise noted shall conform to the recommended sizes detailed in the A.C.I. Manual of Standard Practice for Detailing Reinforced Concrete Structures.
Prestressing Steel: Initial tensioning load = 25.2 k/Strand
Design load = 20.16 k/Strand
Concrete must attain 4,000 p.s.i. compressive strength before the prestressing force is transferred.
Anchor bolt assemblies are to be cast in stringer at spacings as required.

Units are to conform to the requirements of the Bridge Branch Specifications for Prestressed Concrete Bridge Units.
The surface of grout keys shall be sandblasted. If end blockouts are called for their surfaces shall be sandblasted.

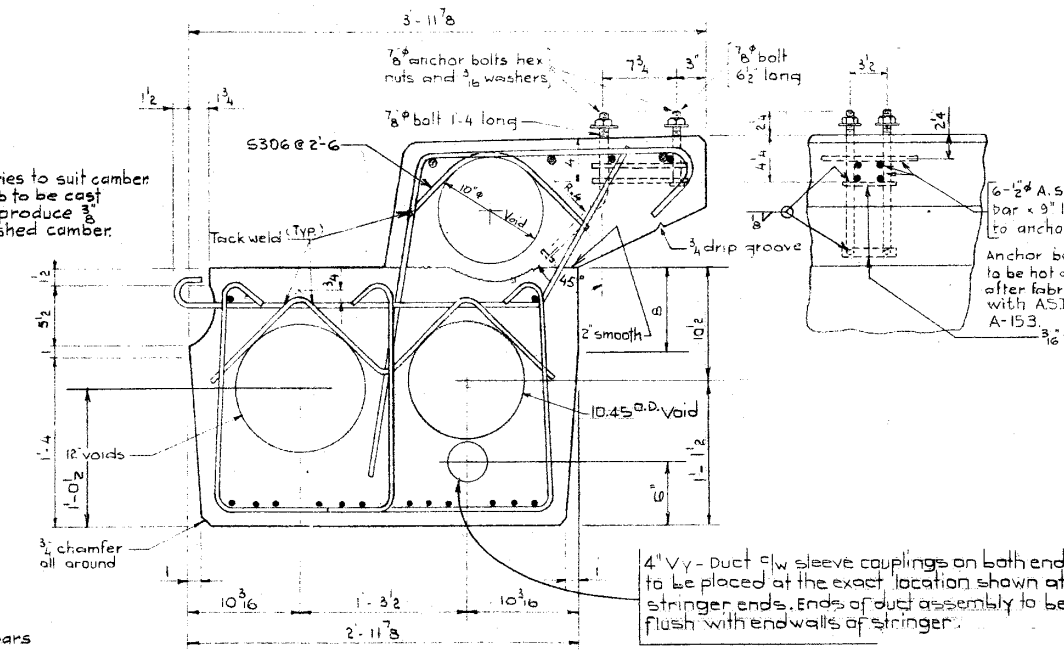
ERECTION
Lifting force at each hook must be not more than 35° from the vertical line at all times. Stringer surface must be level at all times.



ADDITIONAL END BARS

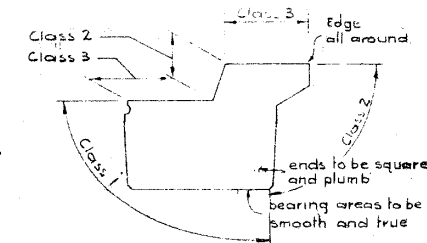


SECTION A-A
Scale: 1/2" = 1'-0"



SECTION B-B
Scale: 1/2" = 1'-0"

Anchor bolt assemblies are to be hot dipped galvanized after fabrication, in accordance with ASTM Specification A-153.
3/16" x 1/2" x 5" bars



STRINGER FINISHES

**SUPERSEDED
DRAWING IN USE
FROM OCT. 15/70 IS
A PHOTOGRAPH OF
TRACING.**

**PRESTRESSED CONCRETE
35 FT SPAN
TYPE M CURB STRINGER**

**GOVERNMENT OF THE PROVINCE OF ALBERTA
DEPARTMENT OF HIGHWAYS
BRIDGE BRANCH, EDMONTON**

NO.	DATE	DESCRIPTION	BY
		Redrawn	S.L.
REVISIONS			

FILE NO.	HWY. NO.	DWG. NO.
LOCATION	SCALE	5-870-70
STREAM	SHEET	OF

DESIGNED BY: R. Wilson
DATE: May 1965
DETAILED BY: R. E. Kenney
DATE: May 1965
CHECKED BY: [Signature]
DATE: [Signature]