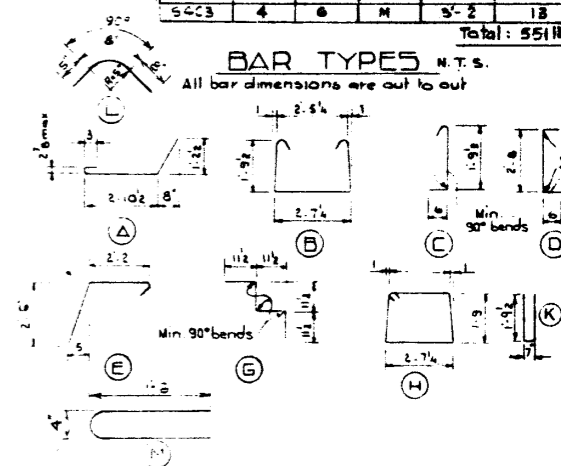


BAR LIST

Mark	Size	No.	Type	Length	Weight
C301	8	56	A	4'-7"	96
S302	3	49	B	6'-10"	110
S303	3	49	C	2'-7"	42
S304	8	20	E	3'-10"	29
S305	3	4	D	3'-8"	6
S401	4	2	H	3'-4"	12
S402	4	3	Sh	34'-8"	65
S501	9	28	E	5'-2"	151
E401	4	4	K	5'-2"	14
S306	3	14	L	1'-9"	9
S403	4	6	M	5'-2"	18
Total:					551 lbs.

BAR TYPES N.T.S.

All bar dimensions are out to out



GENERAL NOTES

DESIGN
A.A.S.H.O. 1961 Specifications except allowable initial concrete stress = 285 p.s.i. in tension.
Loading: 3/5 of one wheel line of an H20-S16-44 truck plus full dead load plus 2" wearing surface.

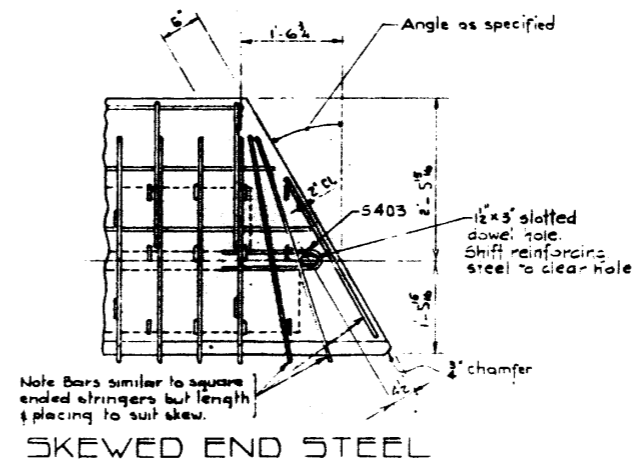
MATERIALS
Concrete shall be of standard weight aggregate with a maximum size of 3/4". Minimum compressive strength shall be 5000 p.s.i. at 28 days. Air entrainment shall be not less than 5%.

FABRICATION
Reinforcement: diameters of all bends and details of all hooks unless otherwise noted shall conform to the recommended sizes detailed in the A.C.I. Manual of Standard Practice for Detailing Reinforced Concrete Structures.

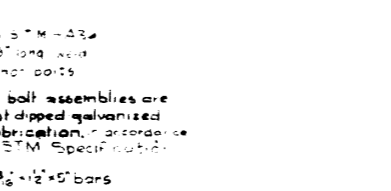
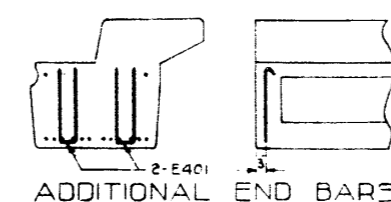
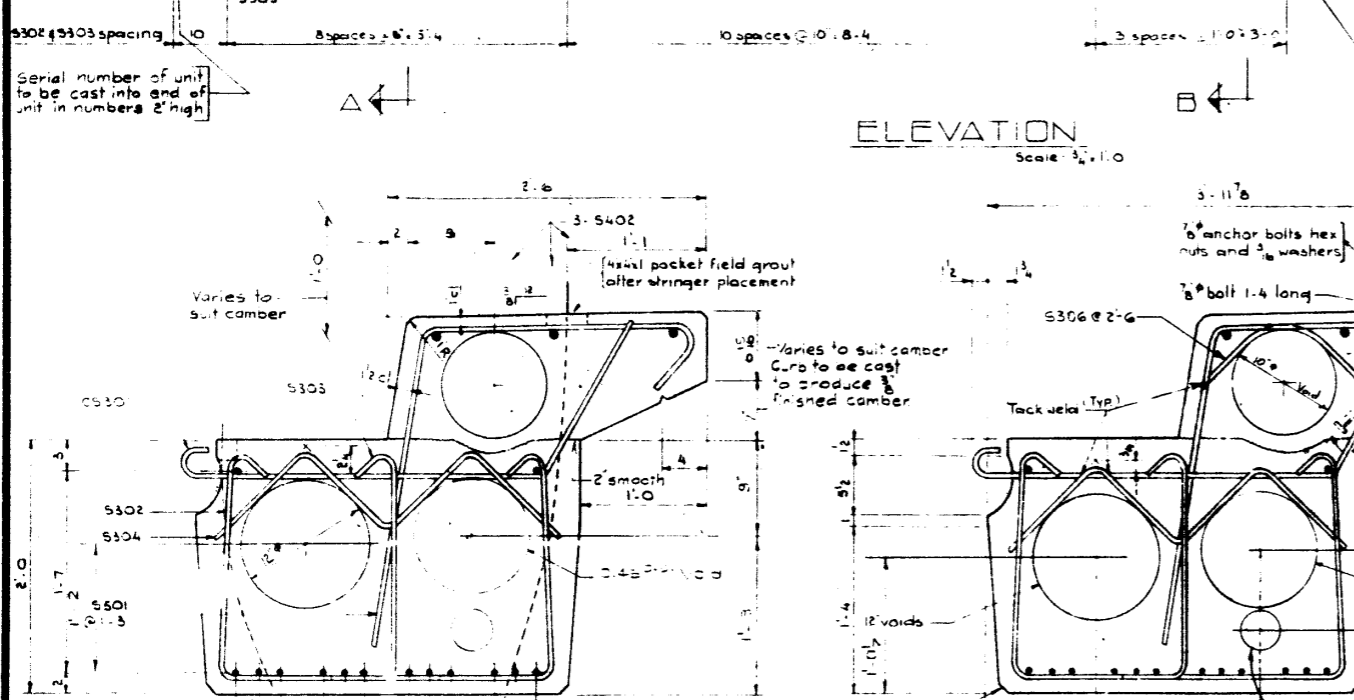
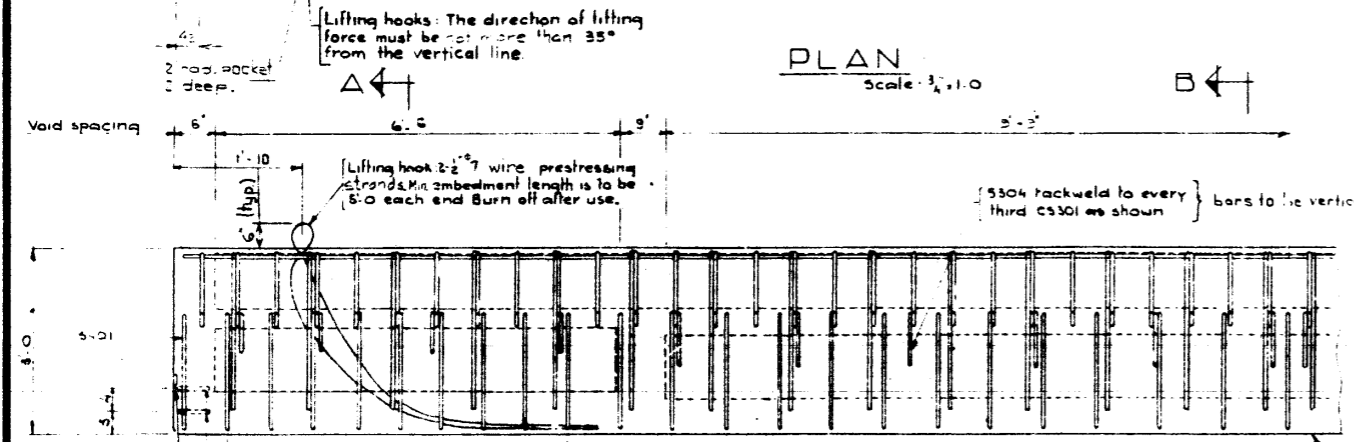
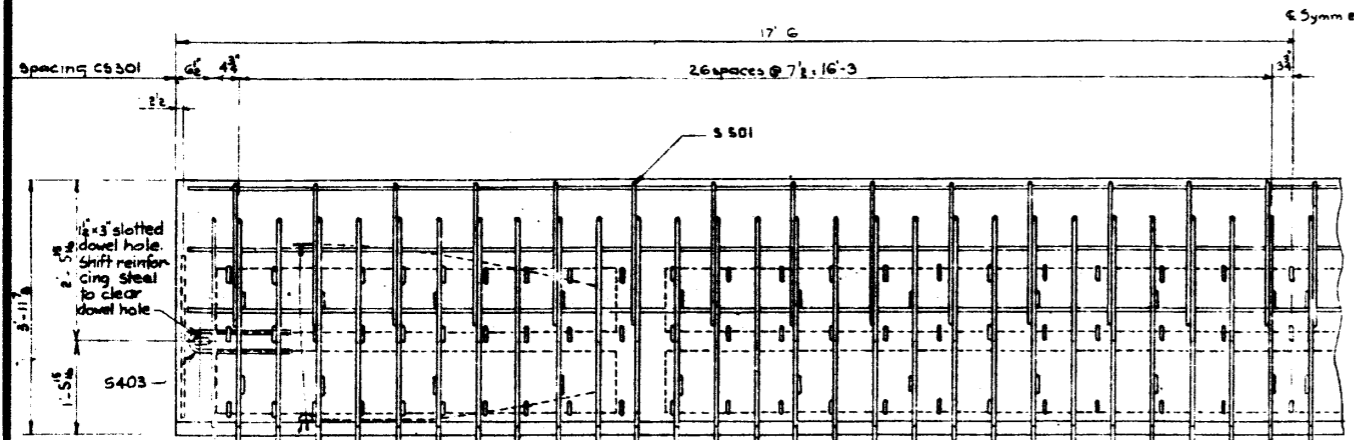
Prestressing Steel: Initial tensioning load = 25.2 x Strand Design Load
Concrete must attain 4,000 p.s.i. compressive strength before the prestressing force is transferred.
Anchor bolt assemblies are to be cast in stringer at spacings as required.

Units are in conform to the requirements of the Bridge Branch Specifications for Prestressed Concrete Bridge Units.
The surface of grout keys shall be sandblasted. If and grout keys are called for their surfaces shall be sandblasted.

ERECTION
Lifting force at each hook must be not more than 30% from the vertical line at all times. Stringer shall be level at all times.



SKewed END STEEL



SUPERSEDED

APPROVED: [Signature] ENGINEER
DATE: Oct 29/70

**PRESTRESSED CONCRETE
35 FT SPAN
TYPE M CURB STRINGER**

GOVERNMENT OF THE PROVINCE OF ALBERTA
DEPARTMENT OF HIGHWAYS
BRIDGE BRANCH, EDMONTON

NO.	DATE	BY	REVISIONS
1	Oct. 28, 1970	Andrews	REVISED

FILE NO. 5-670-70
DRAWN BY: Shaw
CHECKED BY: [Signature]

DESIGNED BY: [Signature] 10/18/65
DATE: May 18/65
CHECKED BY: [Signature] 10/18/65
DATE: May 18/65

Note: Voids to be tied to S304 and S306 bars

4" V-Duct 9" w/ sleeve couplings on both ends to be placed at the exact locat on shown at stringer ends. Ends of duct assembly to be flush with endwalls of stringer.

Anchor bolt assemblies are to be hot dipped galvanized after fabrication, in accordance with ASTM Specification A-153. 3/8" x 1/2" x 5" bars

Lifting hooks: The direction of lifting force must be not more than 35° from the vertical line.

Lifting hook 2x2 7/8 wire prestressing strands. Min embedment length is to be 5'-0" each end. Burn off after use.

Fabricators name, year of manufacture & serial no. of unit to be cast into bottom of slab in 2 letters.

4" x 14" pocket field grout after stringer placement

Varies to suit camber. Curb to be cast to produce finished camber.

Serial number of unit to be cast into end of unit in numbers 2" high

Varies to suit camber

2" smooth 1'-0"

2" smooth 1'-0"

2" smooth 1'-0"

2" smooth 1'-0"

2" smooth 1'-0"

2" smooth 1'-0"

2" smooth 1'-0"

2" smooth 1'-0"

2" smooth 1'-0"

2" smooth 1'-0"

2" smooth 1'-0"

2" smooth 1'-0"

2" smooth 1'-0"

2" smooth 1'-0"

2" smooth 1'-0"

2" smooth 1'-0"

2" smooth 1'-0"

2" smooth 1'-0"

2" smooth 1'-0"