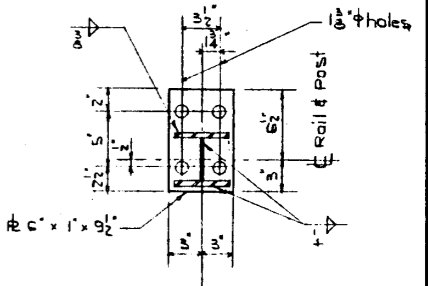
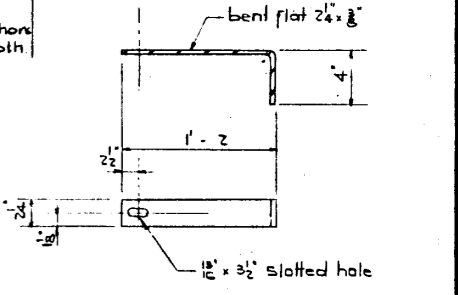


PART ELEVATION  
Scale 1" = 1'-0"



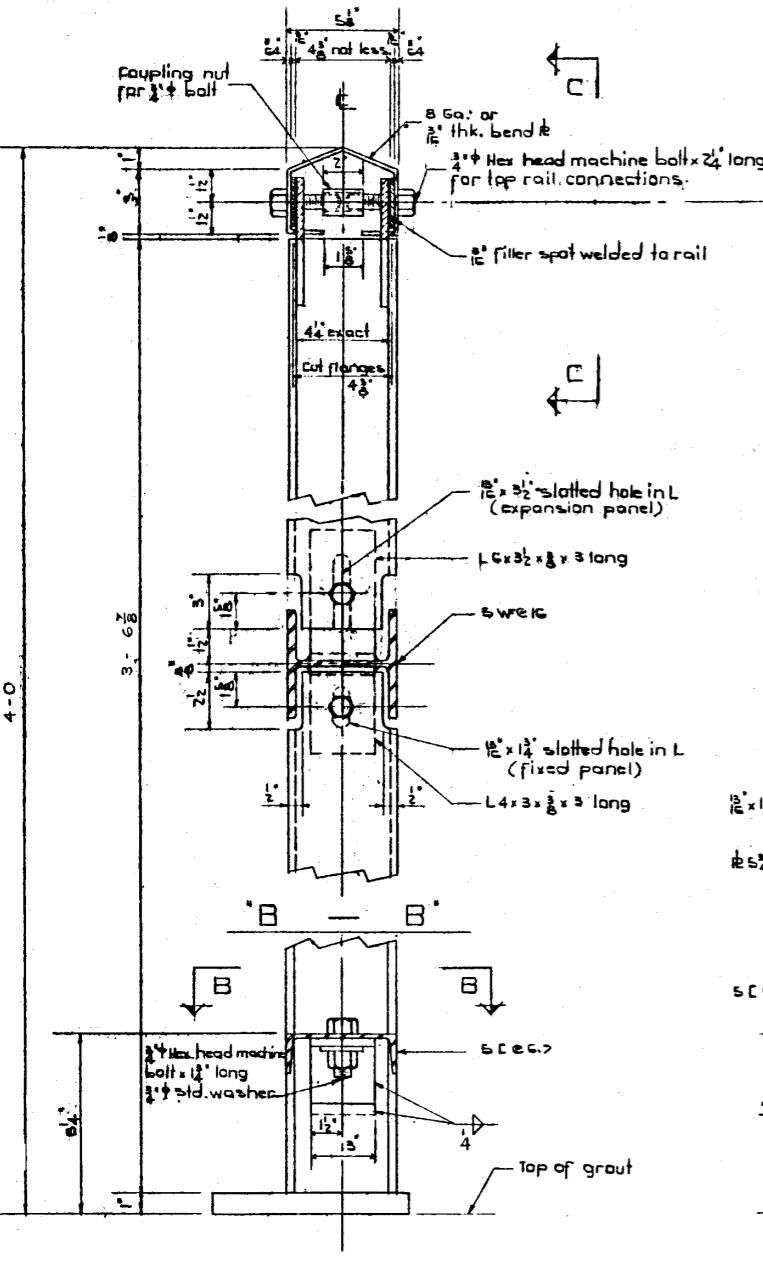
"K - K"  
BASE PLATE  
Typical  
Scale 1/2" = 1'-0"

Note:  
Slotted holes in anchors must be finished smooth and true.



ANCHOR TYPE T  
Scale 1/2" = 1'-0"

Note: Slotted holes in anchors must be finished smooth and true.

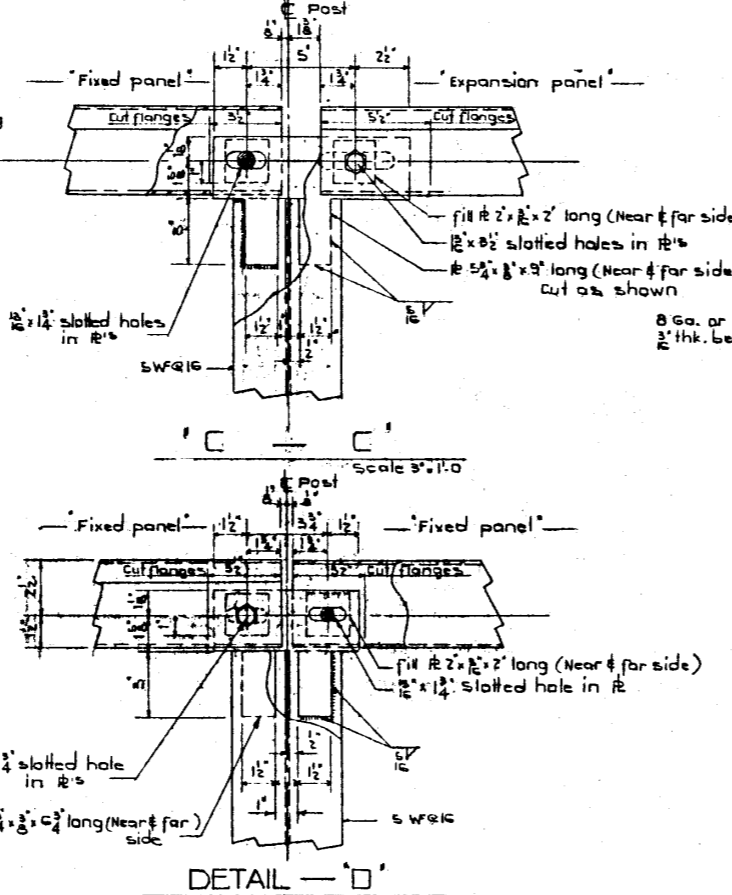


"B - B"  
Scale 3/4" = 1'-0"

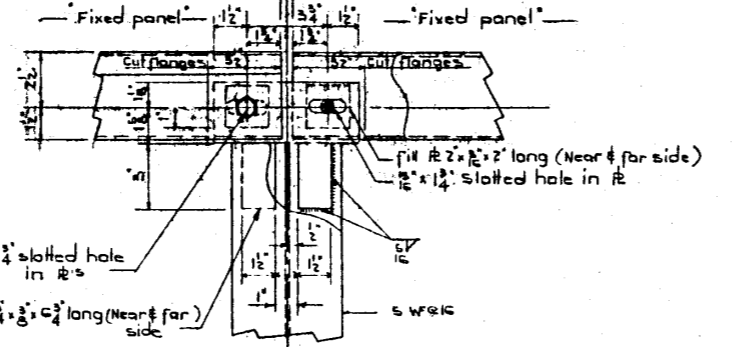
A - A  
Scale 3/4" = 1'-0"

A' - A'  
Scale 3/4" = 1'-0"

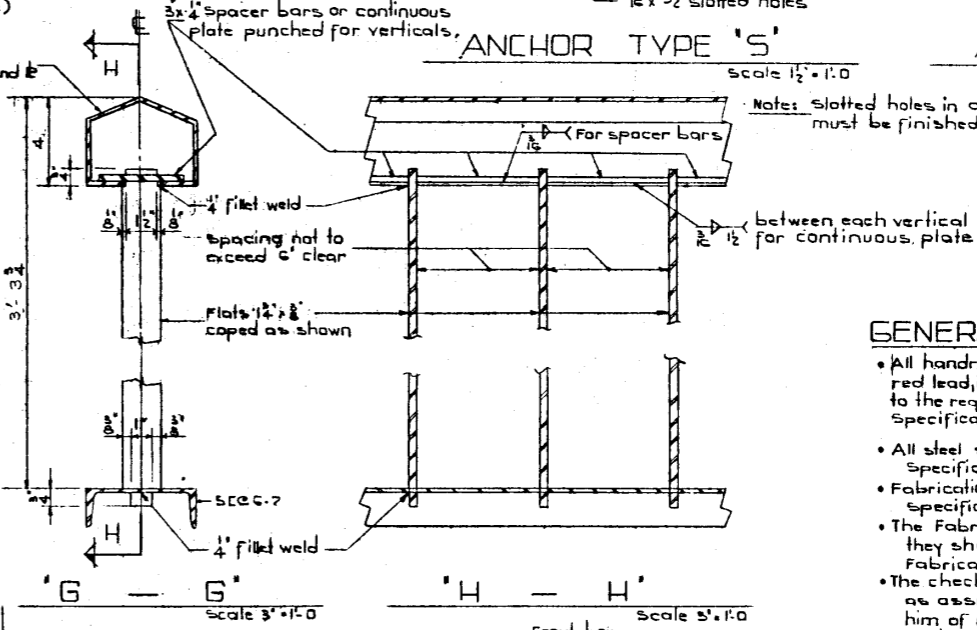
as shown  
same as shown except base projects to the right.



DETAIL D  
Scale 3/4" = 1'-0"



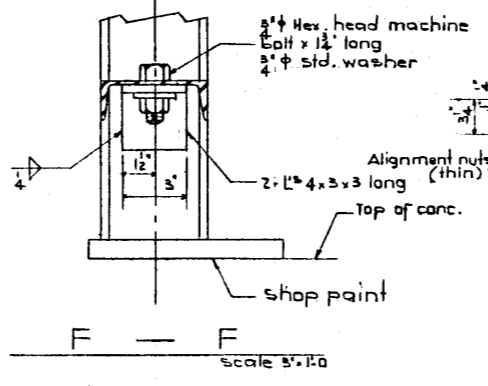
DETAIL E  
Scale 3/4" = 1'-0"



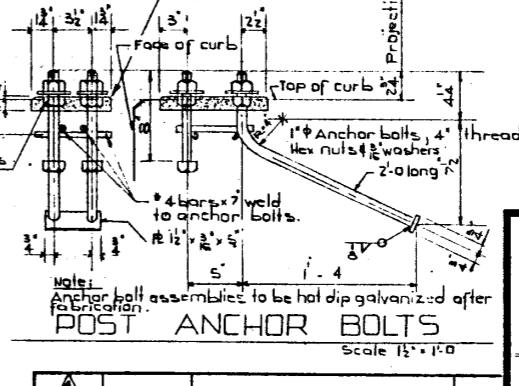
ANCHOR TYPE S  
Scale 1/2" = 1'-0"

"G - G"  
Scale 3/4" = 1'-0"

"H - H"  
Scale 3/4" = 1'-0"



F - F  
Scale 3/4" = 1'-0"



POST ANCHOR BOLTS  
Scale 1/2" = 1'-0"

GENERAL NOTES:

- All handrail and posts to be given one shop coat red lead, iron oxide, oil alkyl type paint conforming to the requirements of the Canadian Government Specification Board, Specification 1-6P-140-A.
- All steel shall conform to the current A.S.T.M. Specification A36.
- Fabrication is to be in accordance with A.A.S.H.O. Specifications for Highway Bridges, 1961 edition.
- The Fabricator shall submit shop drawings and they shall be approved by the Department before fabrication is started.
- The checking of shop drawings is to be considered as assisting the Fabricator and shall not relieve him of responsibility for error or omissions.
- All shop splices are to be shown on the shop drawings.

**SUPERSEDED**  
Superseded by S-933

4'-0 HIGHWAY  
VERTICAL BAR TYPE  
HANDRAIL DETAIL

GOVERNMENT OF THE PROVINCE OF ALBERTA  
DEPARTMENT OF HIGHWAYS  
BRIDGE BRANCH, EDMONTON

NO.	DATE	DESCRIPTION	BY
1	June 8/65	Note added	V.G.B.
2	May 25/65	Redrawn	L.K.

FILE NO. \_\_\_\_\_ HWY. NO. \_\_\_\_\_  
LOCATION \_\_\_\_\_ SCALE \_\_\_\_\_  
STREAM \_\_\_\_\_ SHEET \_\_\_\_\_ OF \_\_\_\_\_  
DWG. NO. S-871

DESIGNED BY L. Kohnmann  
CHECKED BY \_\_\_\_\_  
DATE \_\_\_\_\_