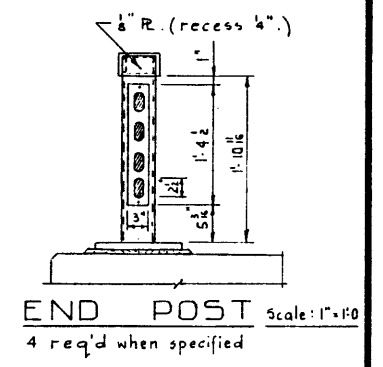
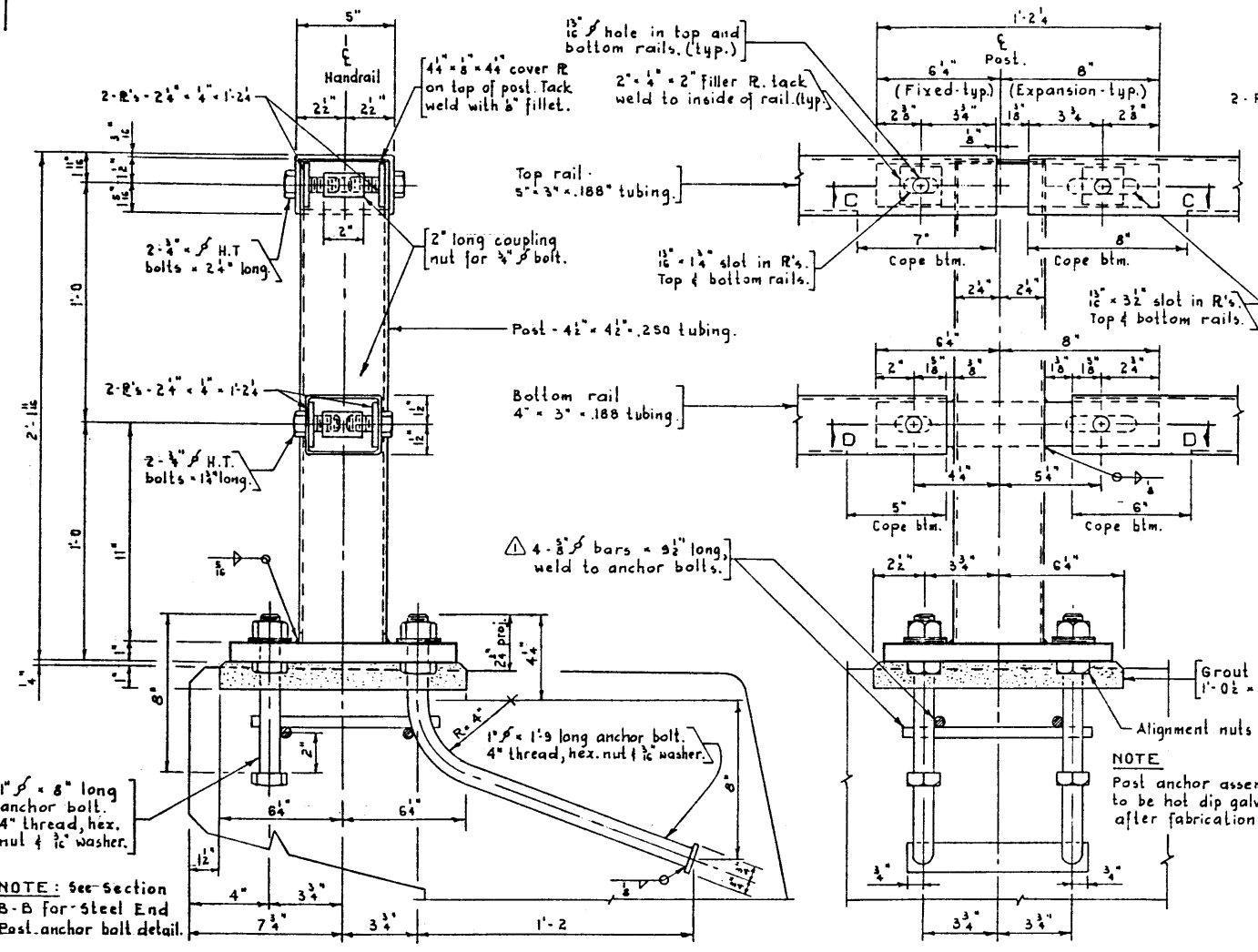


ELEVATION
Scale: 1" = 1'-0"

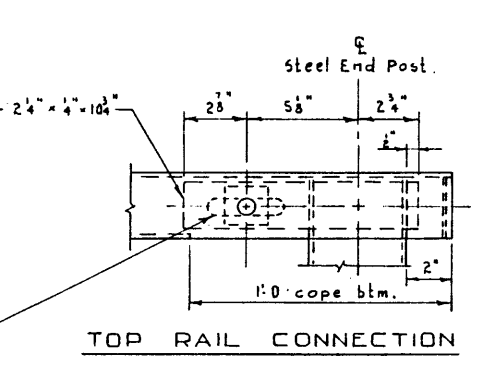
NOTE
Mount Slimsonite 1777 B1 (B4B) 4 No. 15-22 oval reflectors mounted on formed channel housing, or equal on each end post using 1/4" round head plated stove bolts then close driving slot with ball peen hammer.



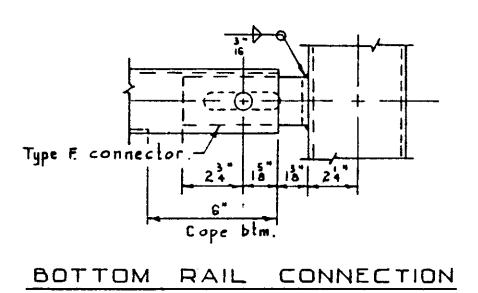
NOTE:
Exact panel lengths will be shown as handrail details in conjunction with another drawing.



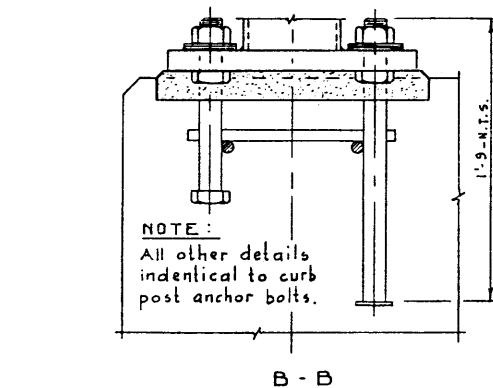
A - A
Scale: 3" = 1'-0"



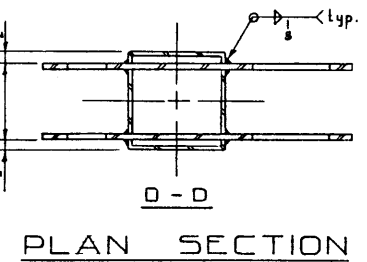
TOP RAIL CONNECTION



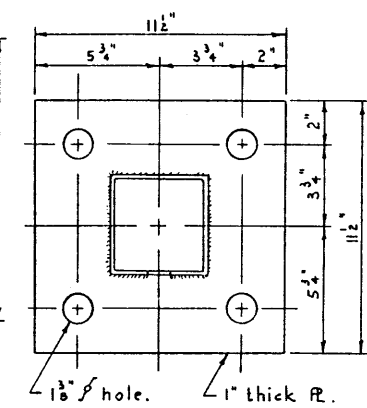
BOTTOM RAIL CONNECTION



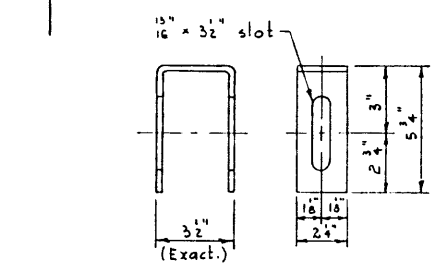
STEEL END POST
Scale: 3" = 1'-0"



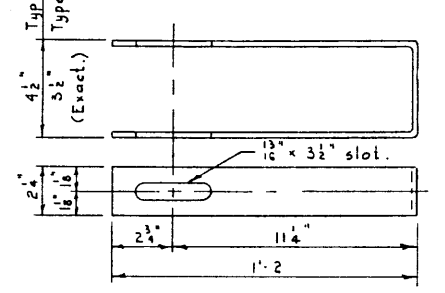
PLAN SECTION



BASE PLATE
Scale: 3" = 1'-0"



TYPE E CONNECTOR
Scale: 3" = 1'-0"



TYPE T & B ANCHORS

- GENERAL NOTES-**
- All requirements of the Bridge Branch Specification for the Supply of Structural Steel for Bridges (Specification No. B187-64) shall be met.
 - Steel shall conform to the current A. S. T. M. Specification A 36
 - Slotted holes in R's and anchors must be finished smooth and true.

DESIGNED BY A.M.J. Keen. DATE July 19 65
 DETAILED BY B.W. Sawicki. DATE July 26 65
 CHECKED BY DATE 10 65

2 FT. RECTANGULAR STEEL TUBE TYPE GUARDRAIL

GOVERNMENT OF THE PROVINCE OF ALBERTA
 DEPARTMENT OF HIGHWAYS
 BRIDGE BRANCH, EDMONTON

NO.	DATE	DESCRIPTION	BY
1	Oct. 2/67	Anchor bolt assembly	B.W.S

REVISIONS

FILE NO. _____ HWY. NO. _____ DWS. NO. _____
 LOCATION _____ SCALE Noted _____
 STREAM _____ SHEET OF 5-873