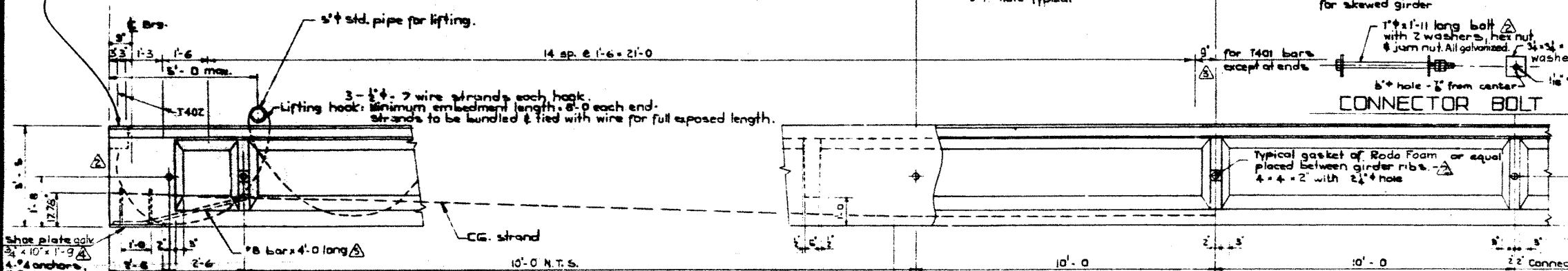
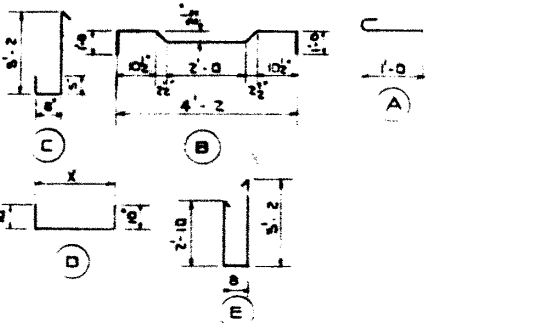
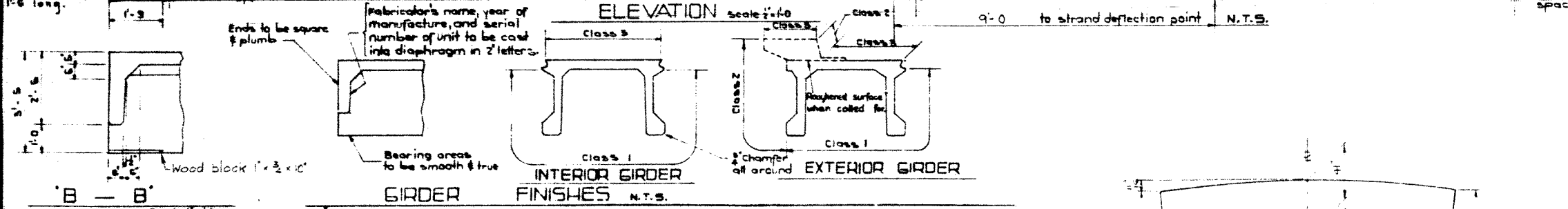


BAR LIST For unskewed Girder						
BAR	NO.	SIZE	TYPE	LENGTH	WEIGHT	
S 301	3	160	A	7	7'-6"	90
S 401	4	14	Str.		25'-6"	238
S 402	4	60	B		2'-4"	234
S 501	5	22	Str.		4'-9"	604
T 401	4	60	C		4'-9"	190
D 601	4	4	D	4'-2"	5'-10"	36
D 602	4	4	D	6'-0"	6'-8"	46
T 402	4	12	E		7'-6"	67
T 601	8	24	Str.		2'-11"	105
						Total Bars 1,647

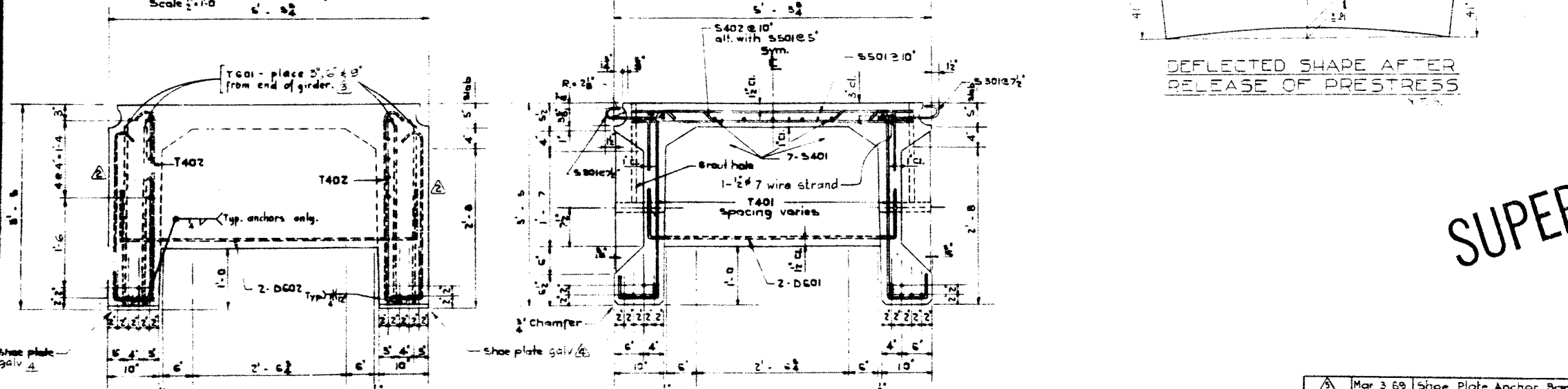
**BAR TYPES:**  
(All bar dimensions are out to out)



**GENERAL NOTES:**  
**DESIGN**  
A.A.S.H.O. 1961 Specification  
Loading: 0.90 of one wheel line of an H20-S16-44 truck plus full dead load plus 2" wearing surface



**MATERIALS**  
Concrete shall be of standard weight aggregate with a maximum size of 3/4". Minimum compressive strength shall be 5000 p.s.i. at 28 days. Entrained air shall be not less than 5%.  
Prestressing steel is 1/2" x 7 wire strand  
**FABRICATION**  
Reinforcement: Diameters of all bends shall conform to the recommended sizes and all hooks, unless otherwise noted, shall conform to the recommended sizes detailed in the A.C.I. Manual of Standard Practice for Detailing Reinforced Concrete Structures.  
Prestressing steel: Initial tensioning load: 25.2% strand Design Load: 20.2% strand  
Concrete must attain 4000 p.s.i. compressive strength before the prestressing force is transferred.  
Galvanizing shall be in accordance with A.S.T.M.-Spec A153  
units are to conform to the requirements of the Alberta Bridge Branch Specification B190-64 for the Manufacture of Prestressed Concrete Bridge Units.



DEFLECTED SHAPE AFTER RELEASE OF PRESTRESS

**SUPERSEDED**  
DEC. 8, 1978  
BY 3-877-78

PRESTRESSED CONCRETE  
50'-0" TYPE FC GIRDER

NO.	DATE	DESCRIPTION	BY
1	Mar 3 69	Shoe Plate Anchor Bar	T.B.
2	Nov 12 68	1" hole & galy. shoe B	R.C.H.
3	Apr 25 68	T401 bars quantity, dimension	R.S.Z.
4	Nov 29 67	General Revisions	J.C.
5	Nov 5 65	Drawn from Dwg. S-850	R.C.

GOVERNMENT OF THE PROVINCE OF ALBERTA  
DEPARTMENT OF HIGHWAYS  
BRIDGE BRANCH, EDMONTON  
FILE NO. \_\_\_\_\_ REV. NO. \_\_\_\_\_ SHEET NO. 5-677  
LOCATION \_\_\_\_\_ SCALE \_\_\_\_\_ SHEET OF \_\_\_\_\_