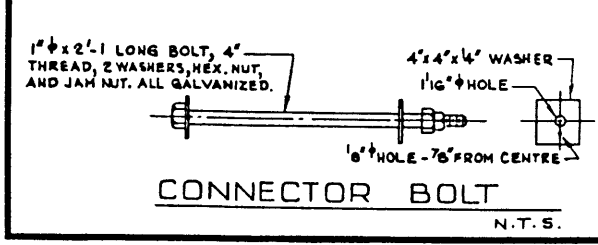
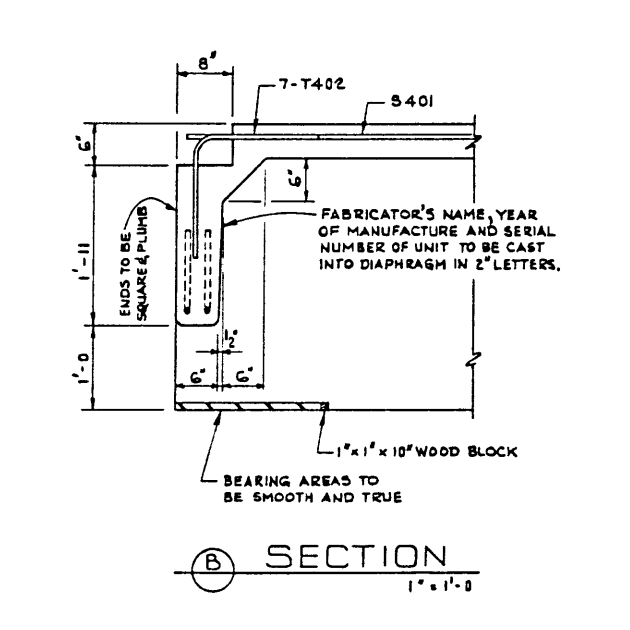
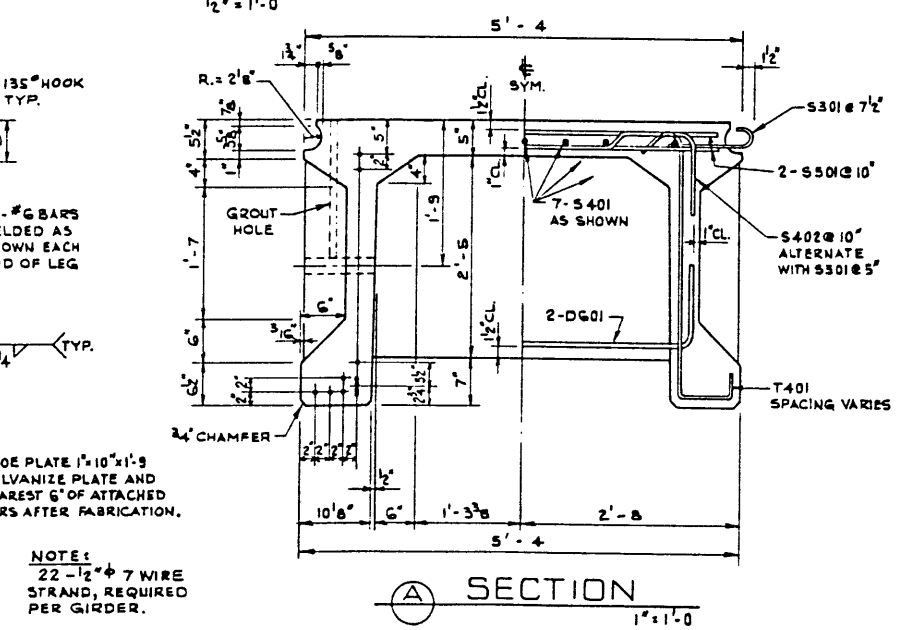
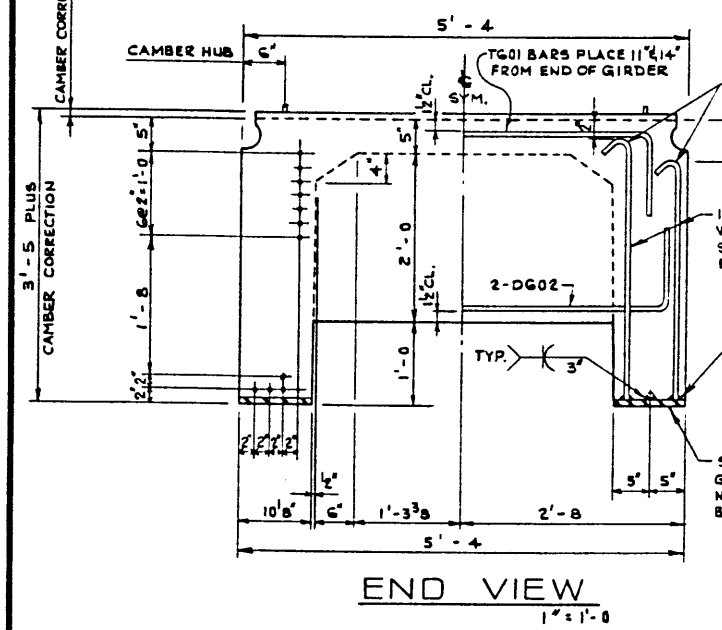
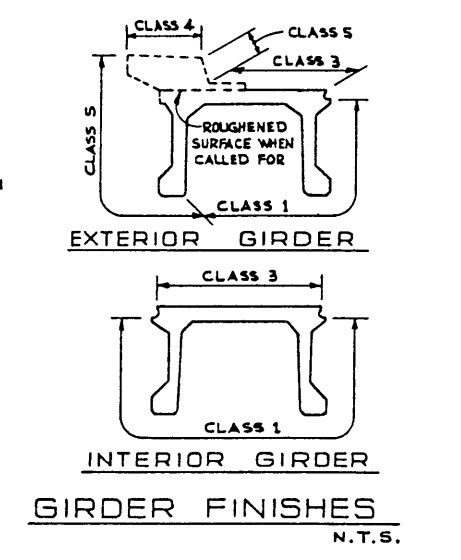
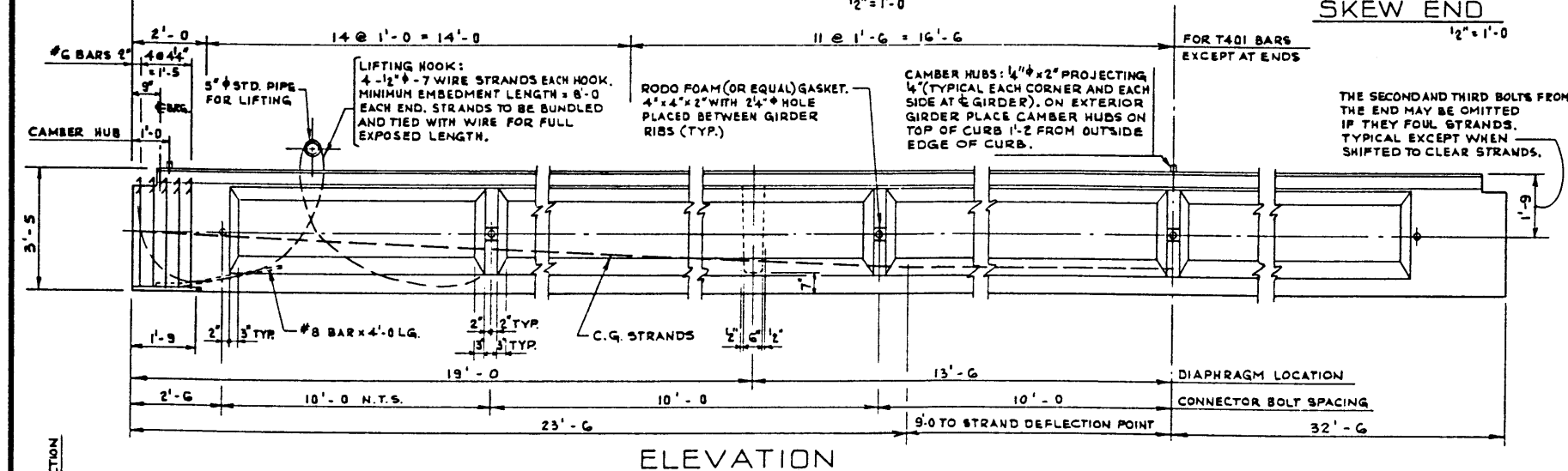
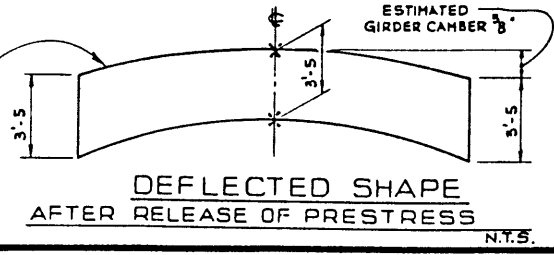


BAR LIST: FOR UNSKEWED GIRDER							
MARK	SIZE	NO.	TYPE	X	Y	LENGTH	WEIGHT
S 301	3	204	C			1'-6	115
S 401	4	14	STR.			32'-10	307
S 402	4	76	B			6'-4	322
S 501	5	154	STR.			4'-9	763
T 401	4	102	A			4'-8	316
T 402	4	14	E			3'-0	28
T 601	6	4	D	4'-6		6'-6	39
D 601	6	4	D	4'-2		6'-2	37
D 602	6	4	D	5'-0		7'-0	42
TOTAL LBS: 1,971							



NOTES:
22 - 1/2" x 7 WIRE STRAND, REQUIRED PER GIRDER.

CAMBER CORRECTION VARIES FROM 0" AT CENTRE TO 0" AT ENDS. CAMBER CORRECTION IS SUCH AS TO PRODUCE A GIRDER CAMBER EQUAL TO THE SPAN/1000 AND MAY BE VARIED TO SUIT GRADELINE.



APPROVED

[Signature]
CHIEF BRIDGE ENGINEER

PROVINCE OF ALBERTA
DEPARTMENT OF HIGHWAYS AND TRANSPORT
BRIDGE BRANCH

PRESTRESSED CONCRETE
65'-0 TYPE FC-41" GIRDER

NO. 8/1/73 REDRAWN FROM S-880 E.B.J.

NO. DATE DESCRIPTION BY

DESIGNED DRAWN BY DATE CHECKED BY DATE STREAM LOCATION HWY. NO. SCALE FILE NO. SHEET DWG. NO.

E. B. J. V. G. B. JAN. /73 APR. 73. S-880-73