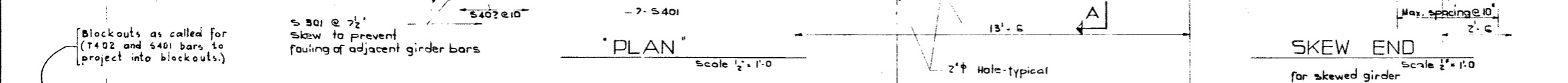
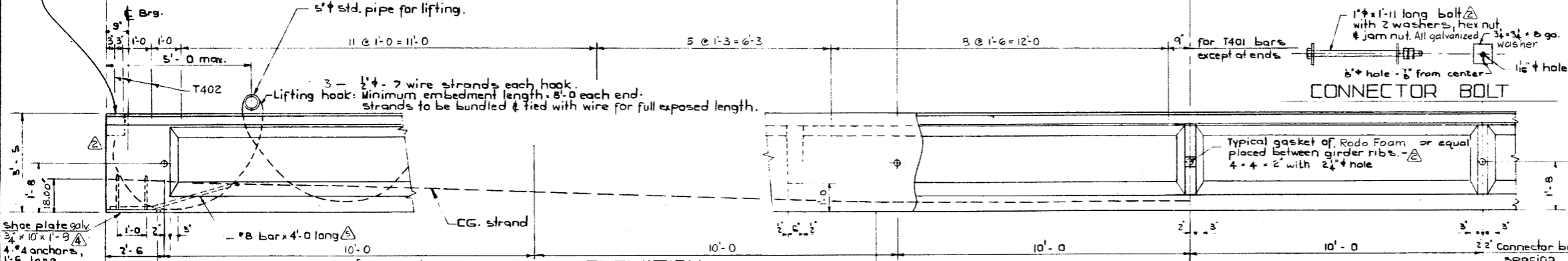
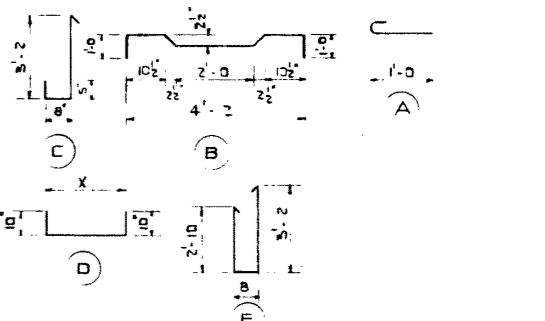


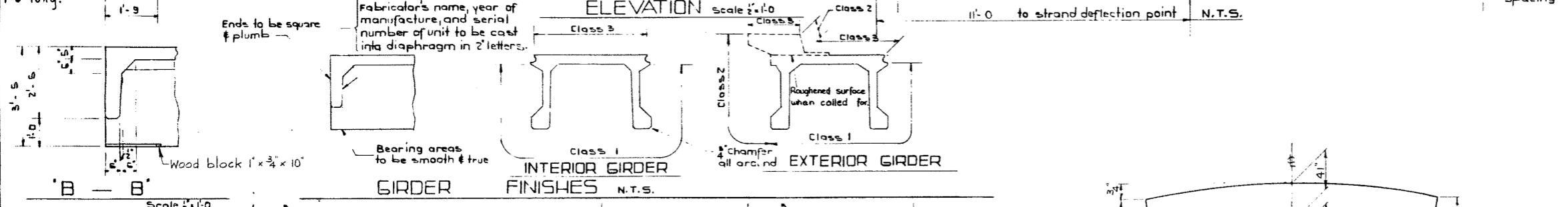
BAR LIST For unskewed Girder						
MARK	SIZE	NO.	TYPE	LENGTH	WEIGHT	
S 301	3	208	A	1'-6"	11.7	
S 401	4	14	Str.	35'-0"	30.9	
S 402	4	78	B	6'-4"	3.30	
S 501	5	158	Str.	4'-9"	7.83	
T 401	4	100	C	4'-9"	3.17	
D 601	6	4	D	4'-2"	5'-10"	35
D 602	6	4	D	5'-0"	6'-8"	40
T 402	4	12	E	7'-6"	61	
T 601	6	24	Str.	2'-11"	10.5	



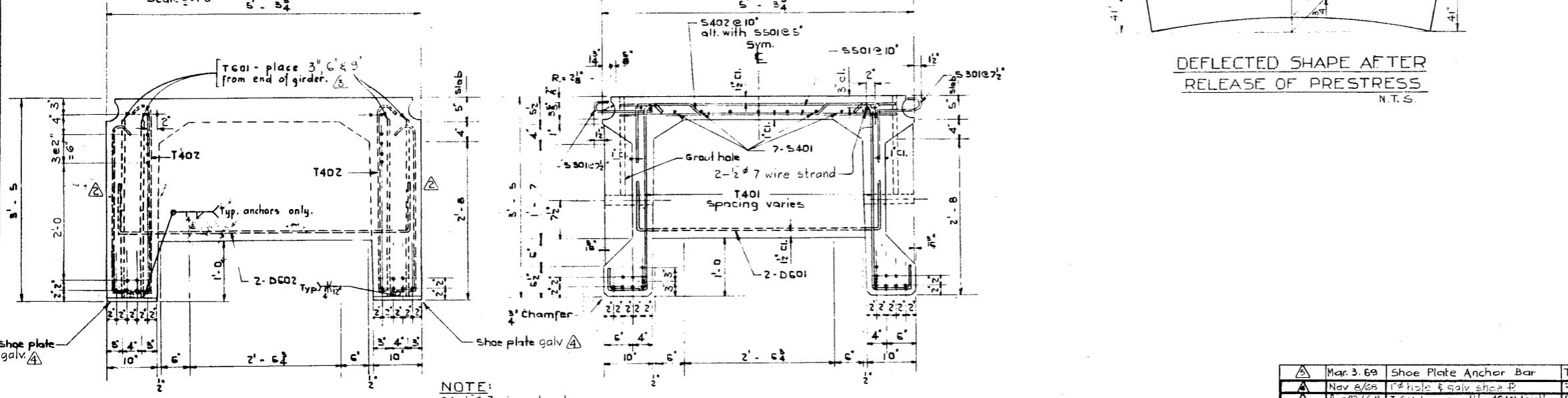
BAR TYPES:  
(All bar dimensions are out to out)



GENERAL NOTES:  
DESIGN  
A.A.S.H.O. 1961 Specification  
Loading: 0.90 of one wheel line of an H20-S16-44 truck plus full dead load plus 2" wearing surface



MATERIALS  
Concrete shall be of standard weight aggregate with a maximum size of 3/4". Minimum compressive strength shall be 5000 p.s.i. at 28 days. Entrained air shall be not less than 5%.  
Prestressing steel is 1/2" 7 wire strand.  
FABRICATION  
Reinforcement: Diameters of all bends shall conform to the recommended sizes and all hooks, unless otherwise noted, shall conform to the recommended sizes detailed in the A.C.I. Manual of Standard Practice for Detailing Reinforced Concrete Structures.  
Prestressing steel: Initial tensioning load = 25.2% strand Design Load = 20.2% strand  
Concrete must attain 4000 p.s.i. compressive strength before the prestressing force is transferred.  
Galvanizing shall be in accordance with A.S.T.M. Spec A153



Units are to conform to the requirements of the Alberta Bridge Branch Specification 3190 for the Manufacture of Prestressed Concrete Bridge Units

ERECTOR  
Lifting force at each hook must be vertical at all times.  
Girder surface must be level at all times.  
**SUPERSEDED** APR 9 - 1973  
By 5-880-73

PRESTRESSED CONCRETE  
65'-0" TYPE FC GIRDER

FILE NO.		HWY. NO.		DWA. NO.	
LOCATION		SCALE		SHEET	
STREAM		OF		5-880	

NO.	DATE	DESCRIPTION	BY
1	Mar. 3/69	Shoe Plate Anchor Bar	T.B.
2	Nov. 2/68	1" hole & galv. shoe P	R.Ch
3	Apr. 23/68	T 601 bars quantity & S401 length	P.Sz
4	Nov. 28/67	General Revisions	J.C.
5	Nov. 3/65	Drawn from Dwg. S-853	R.C.

DESIGNED BY L. Kohlmann  
DATE February 19, 1969  
CHECKED BY  
DATE

NOTE:  
24-1/2" 7 wire strand required per girder.