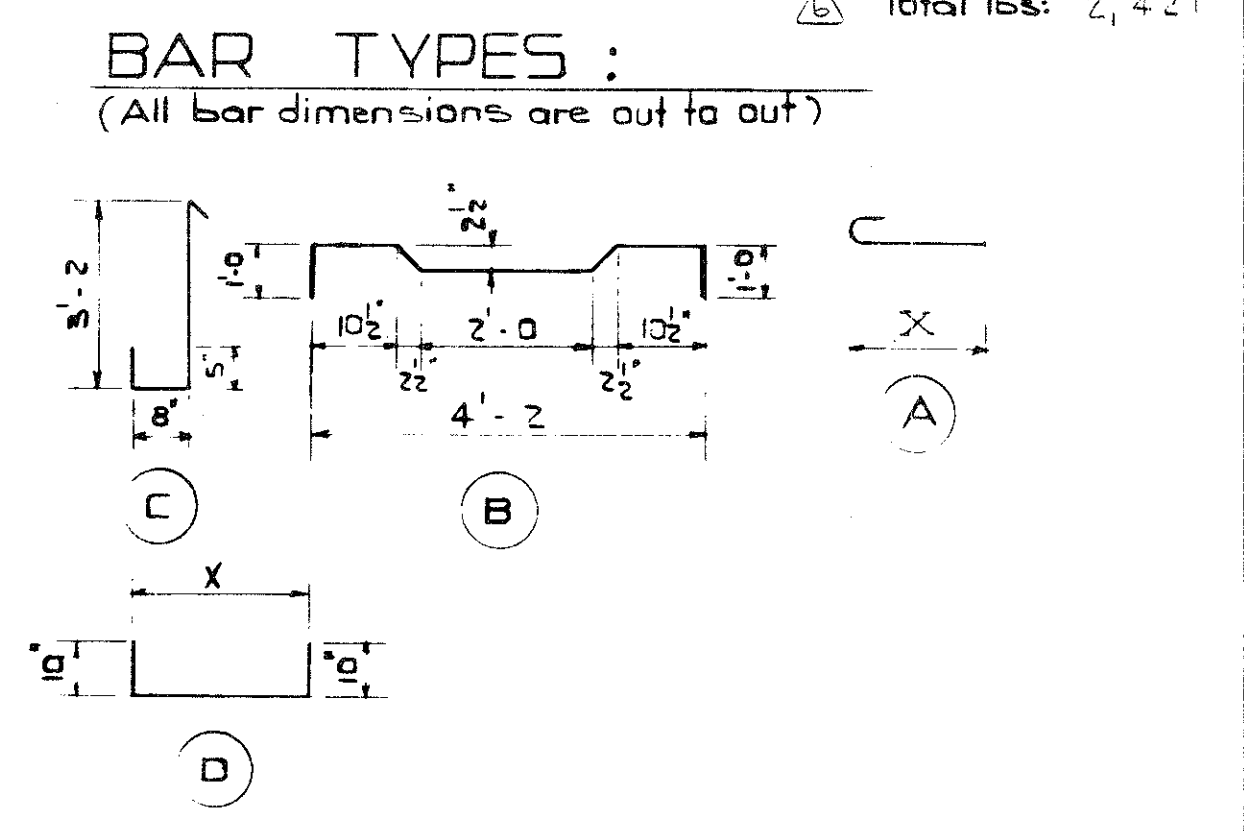
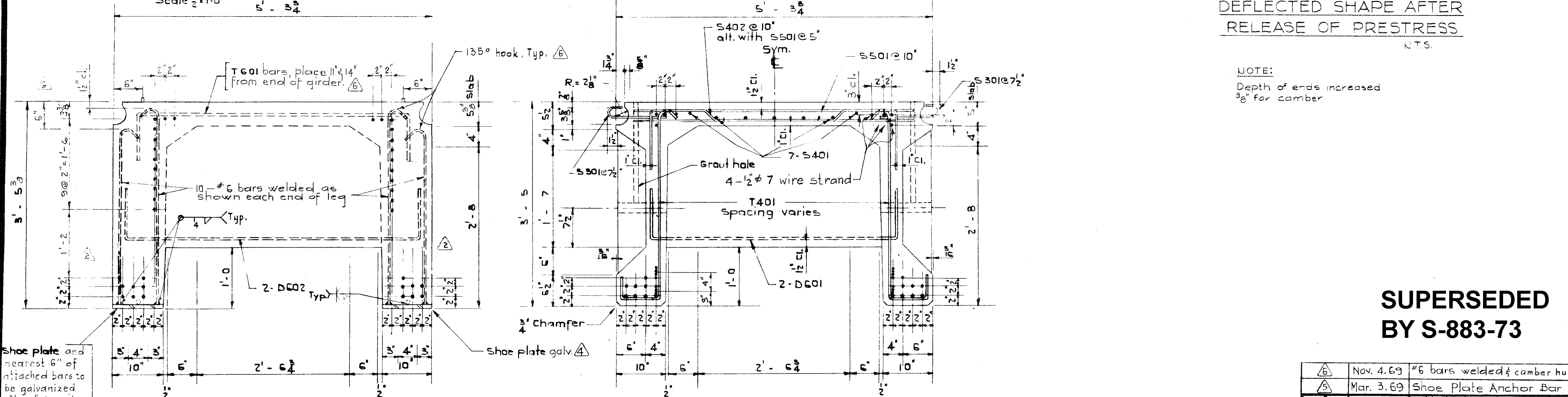
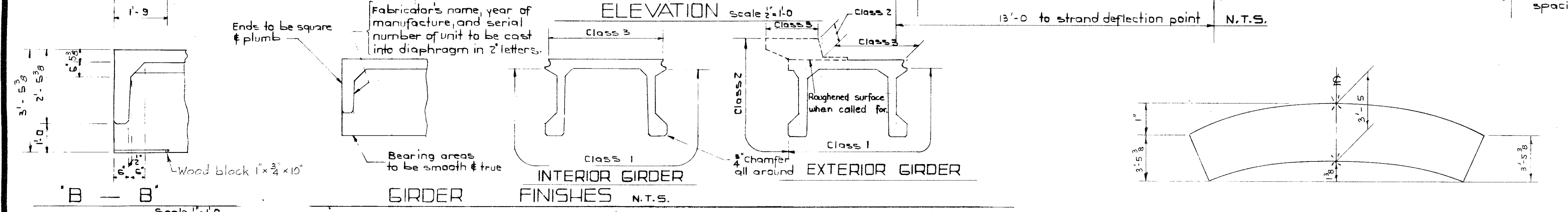
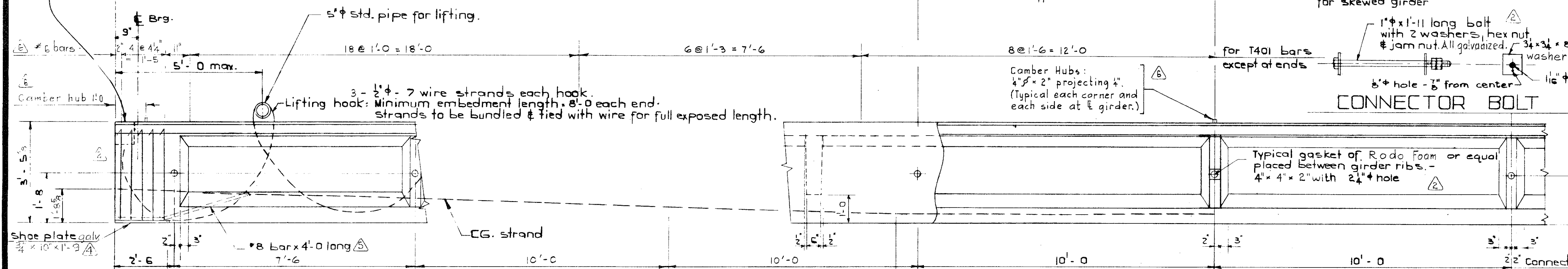
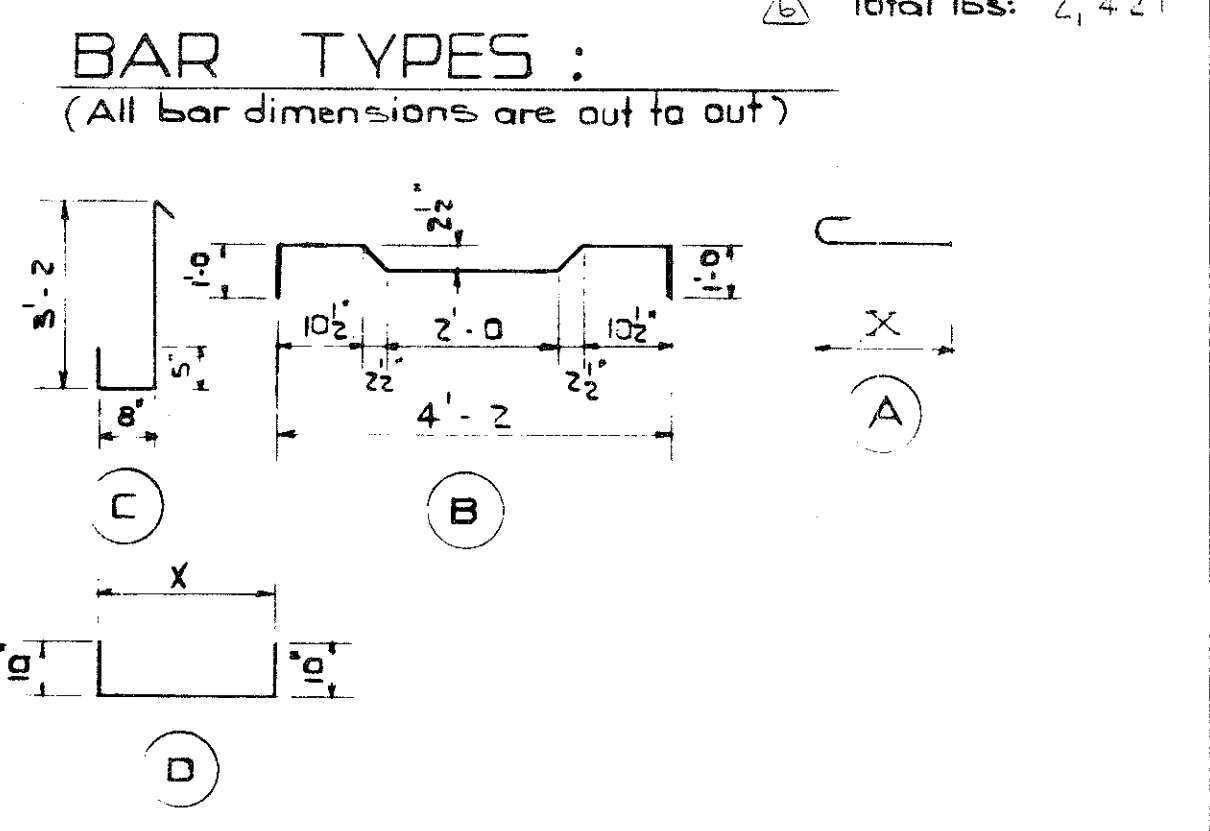


BAR LIST For unskewed Girder							
MARK	SIZE	NO	TYPE	'X'	'Y'	LENGTH	WEIGHT
S 301	3	256	A	1'-0"		1'-6"	144
S 401	4	21	Str.			27'-6"	336
S 402	4	96	B			5'-4"	408
S 501	5	194	Str.			4'-9"	961
T 401	4	130	C			4'-9"	412
D 601	6	4	D	4'-2"		5'-10"	35
D 602	6	4	D	5'-0"		6'-8"	40
T 601	6	4	D	4'-6"		6'-2"	37
							Total lbs: 2,421

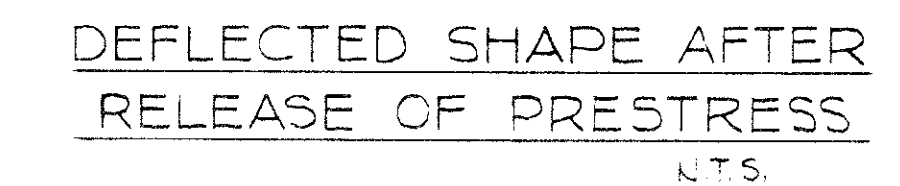


GENERAL NOTES:
DESIGN
 A.A.S.H.O. 1961 Specification
 Loading: 0.90 of one wheel line of an H20-S16-44 truck plus full dead load plus 2" wearing surface

MATERIALS
 Concrete shall be of standard weight aggregate with a maximum size of 2". Minimum compressive strength shall be 5000 p.s.i. at 28 days. Entrained air shall be not less than 5%.
 Prestressing steel is 2" - 7 wire strand.

FABRICATION
 Reinforcement: Diameters of all bends shall conform to the recommended sizes and all hooks, unless otherwise noted, shall conform to the recommended sizes detailed in the A.C.I. Manual of Standard Practice for Detailing Reinforced Concrete Structures.
 Prestressing steel: Initial tensioning load = 25.2% strand Design Load
 Concrete must attain 4000 p.s.i. compressive strength before the prestressing force is transferred.
 Galvanizing shall be in accordance with A.S.T.M. Spec. A153.

ERECTION
 Lifting force at each hook must be vertical at all times.
 Girder surface must be level at all times.



NOTE:
 Depth of ends increased 3/8" for camber

SUPERSEDED BY S-883-73

NO.	DATE	DESCRIPTION	BY
1	Nov. 4/69	#6 bars welded & camber hubs.	C.N.P.
2	Mar. 3/69	Shoe Plate Anchor Bar	T.B.
3	Nov. 2/68	1" hole & galv. shoe #	R.Ch.
4	Nov. 24/67	General	J.C.
5	Oct. 20/65	Drawn from Dwg. No. S-856	V.B.

PRESTRESSED CONCRETE
80'-0 TYPE FC GIRDER

GOVERNMENT OF THE PROVINCE OF ALBERTA
 DEPARTMENT OF HIGHWAYS
 BRIDGE BRANCH, EDMONTON

FILE NO. _____ HWY. NO. _____ DWS. NO. _____
 LOCATION _____ SCALE _____ S-883-69
 STREAM _____ SHEET _____ OF _____

DESIGNED BY _____
 CHECKED BY _____
 DATE February 16, 64