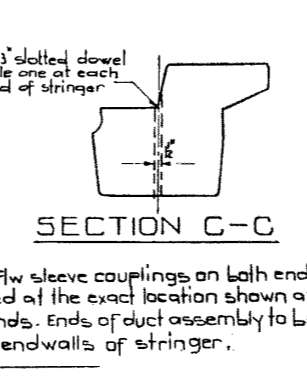
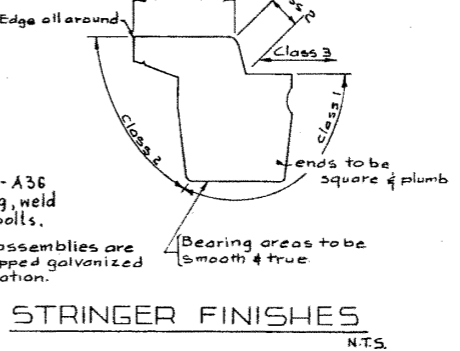
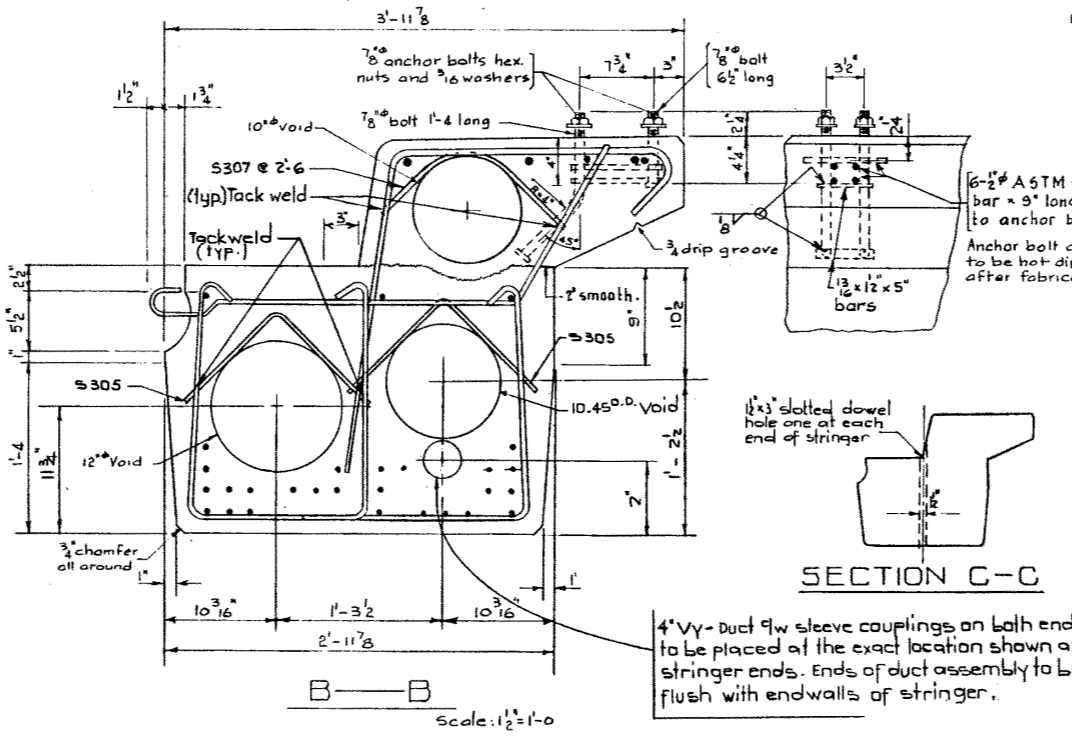
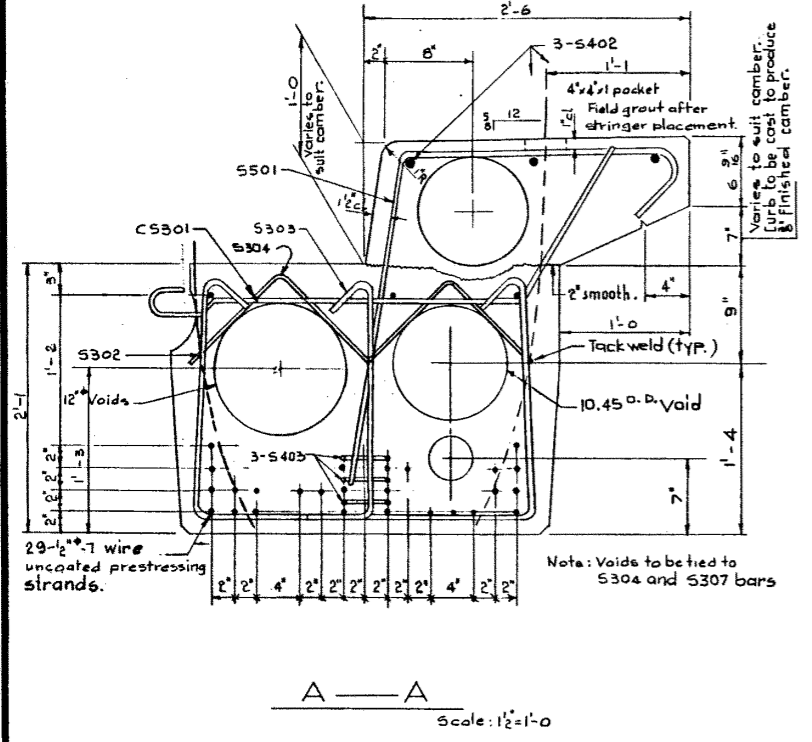
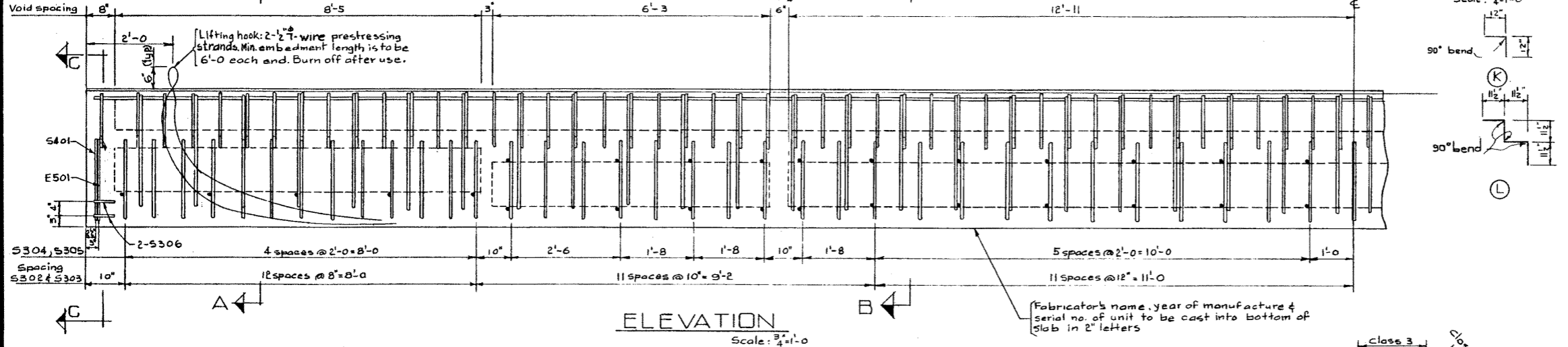
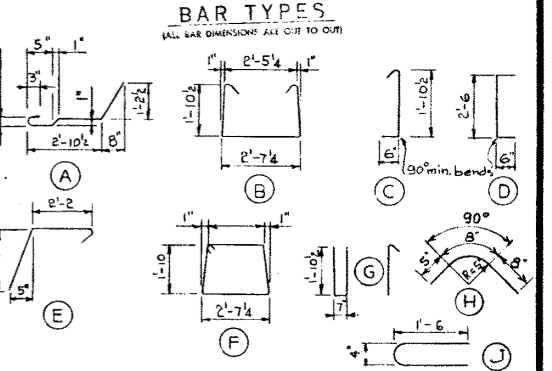


MARK	SIZE	NO	TYPE	WEIGHT	TOTAL
C5301	3	92	A	4.7	1.58
S302	3	70	B	7.0	1.84
S303	3	70	C	2.8	7.0
S304	3	10	K	3.10	15
S305	3	46	L	2.0	34
S306	3	4	D	3.8	6
S401	4	2	F	9.6	1.3
S402	4	6	5H	29.6	1.8
S501	5	48	E	5.2	25.9
E501	5	4	G	5.4	2.2
S307	3	24	H	1.9	16
S403	4	6	J	2.7	10
					Total Lbs.: 905



GENERAL NOTES

DESIGN
A.A.S.H.O. 1961 Specifications except allowable initial concrete stress = 285 p.s.i. in tension.
Loading: 3/5 of one wheel line of an H20-S16-44 truck plus full dead load plus 2" wearing surface.

MATERIALS
Concrete shall be of standard weight aggregate with a maximum size of 3/4". Minimum compressive strength shall be 5000 p.s.i. at 28 days. Air entrainment shall be not less than 5%.

FABRICATION
Reinforcement: Diameters of all bends and details of all hooks unless otherwise noted shall conform to the recommended sizes detailed in the A.C.I. Manual of Standard Practice for Detailing Reinforced Concrete Structures.
Prestressing Steel: Initial tensioning load = 25.2 k/strand
Design load = 20.16 k/strand
Concrete must attain 4,000 p.s.i. compressive strength before the prestressing force is transferred.
Anchor bolt assemblies are to be cast in stringer at spacings as required.
Units are to conform to the requirements of the Bridge Branch Specifications for Prestressed Concrete Bridge Units.
The surface of grout keys shall be sandblasted. If end blockouts are called for their surfaces shall be sandblasted.

ERECTION
Lifting force at each hook must be not more than 35° from the vertical line at all times. Stringer surface must be level at all times.

SUPERSEDED
SUPERSEDED
DRAWING IN USE
FROM OCT. 15th/70 IS
A PHOTOGRAPH OF
TRACING.

PRESTRESSED CONCRETE
58 FT SPAN
25" TYPE M CURB STRINGER

GOVERNMENT OF THE PROVINCE OF ALBERTA
DEPARTMENT OF HIGHWAYS
BRIDGE BRANCH, EDMONTON

FILE NO.	HWY. NO.	DRWG. NO.
LOCATION	SCALE	5-886-70
STREAM	SHOWN OF	

NO.	DATE	DESCRIPTION	BY
		Redrawn.	S.L.
REVISIONS			

DESIGNED BY R.W. Karmelien
DATE March 19 66
CHECKED BY F.Y.U.
DATE April 19 66