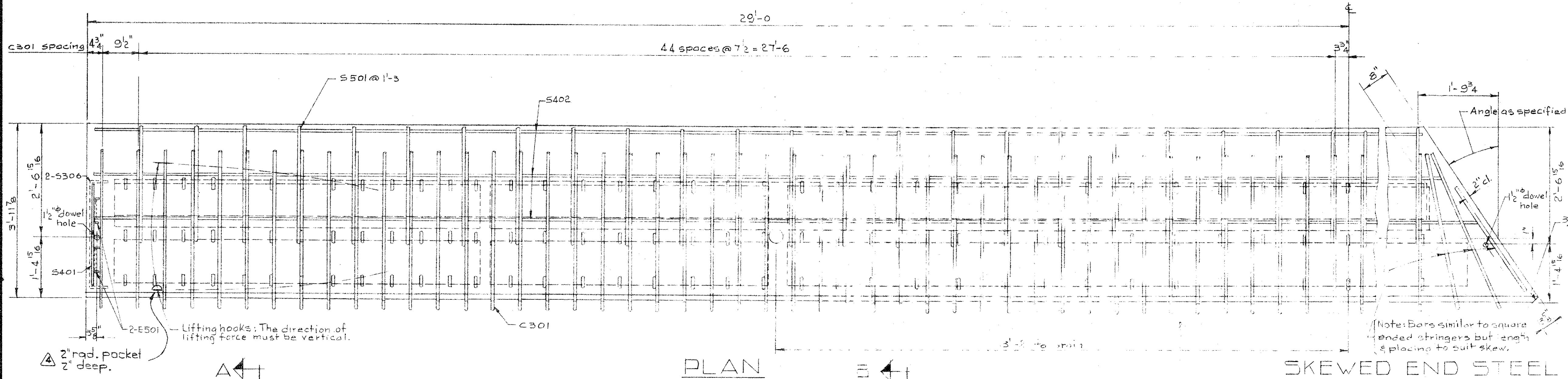
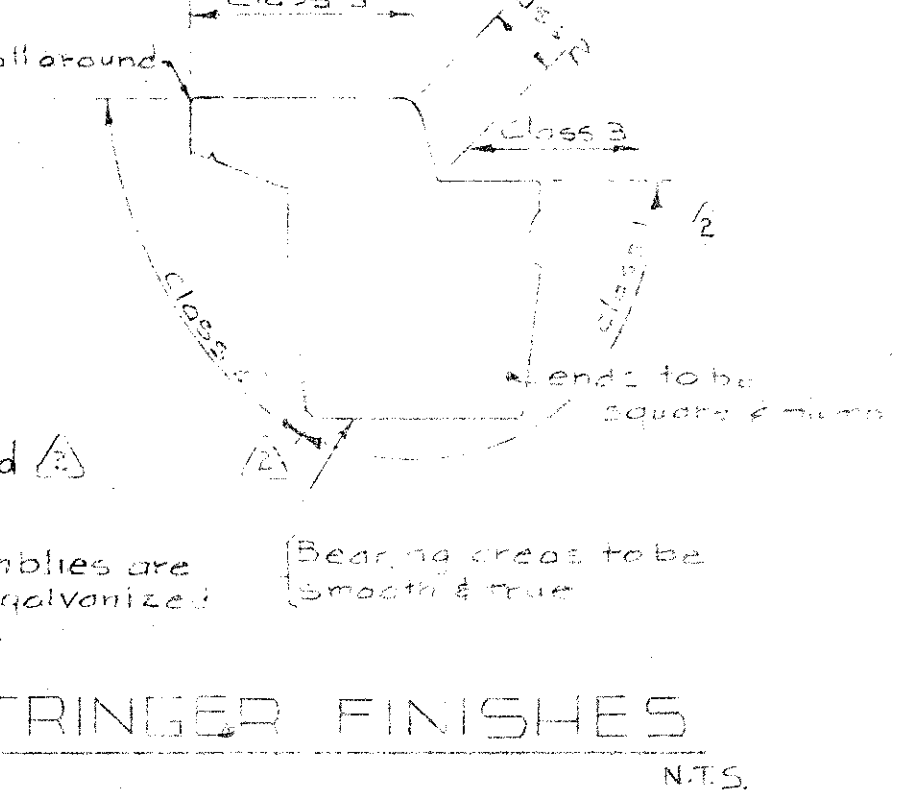
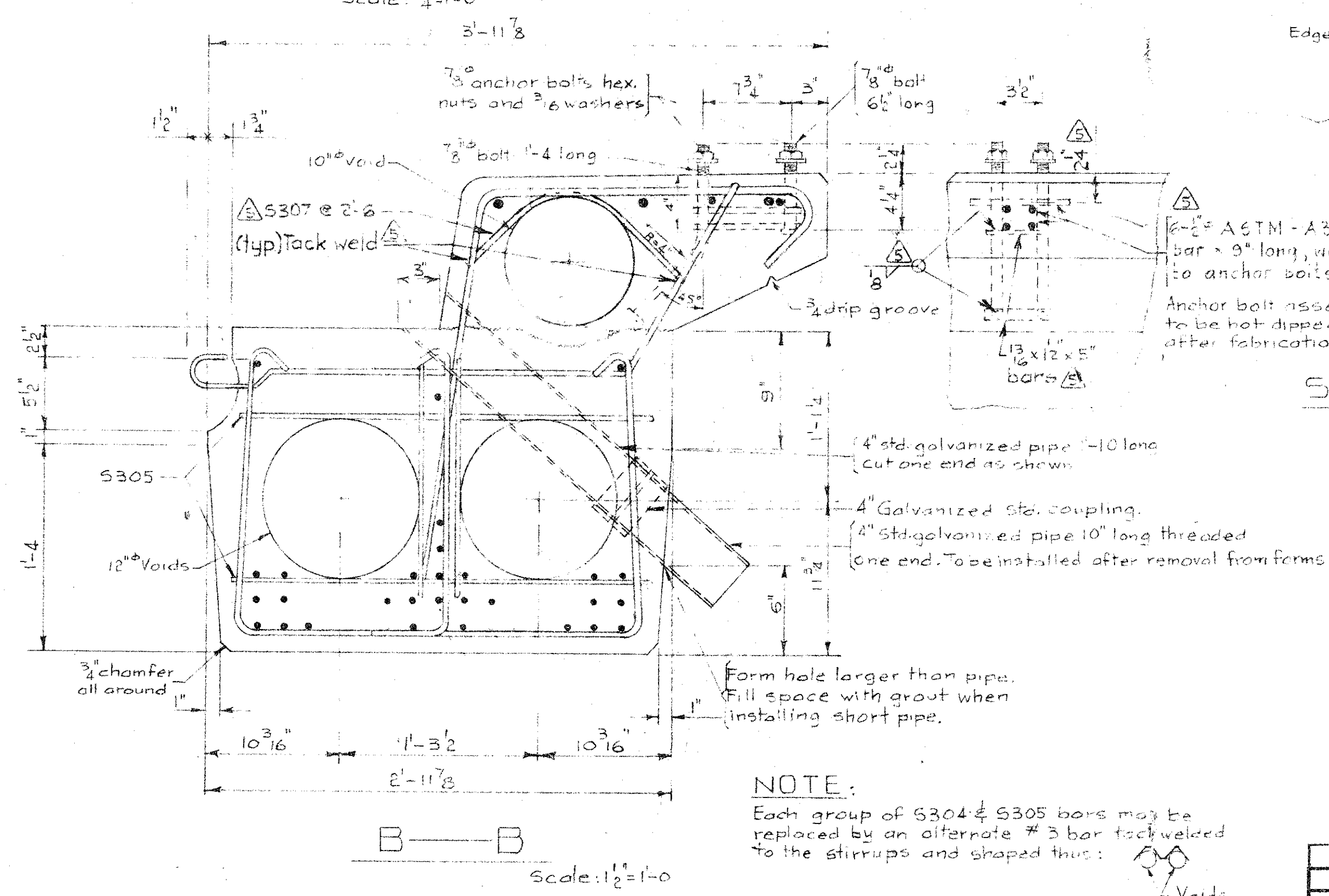
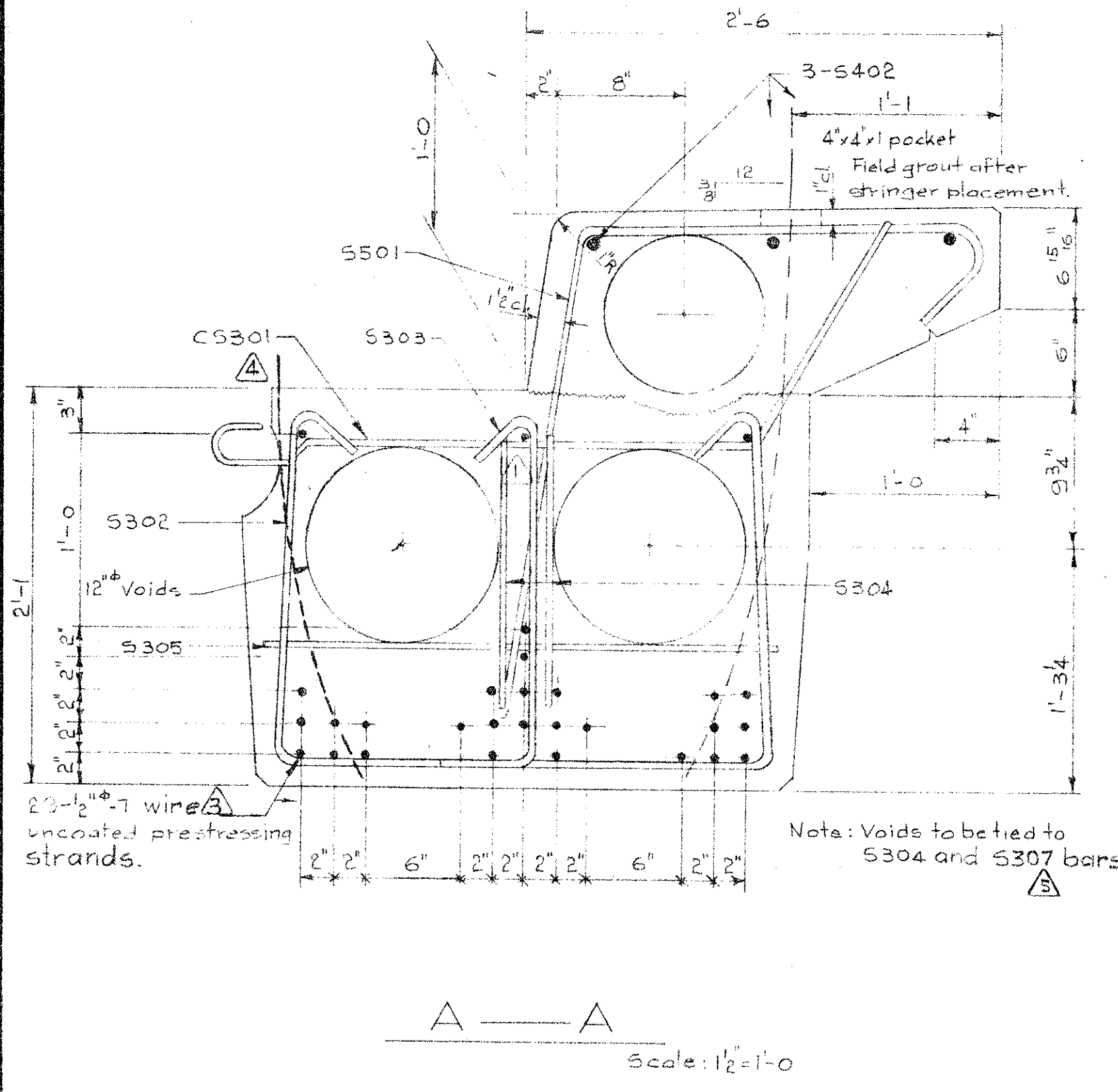
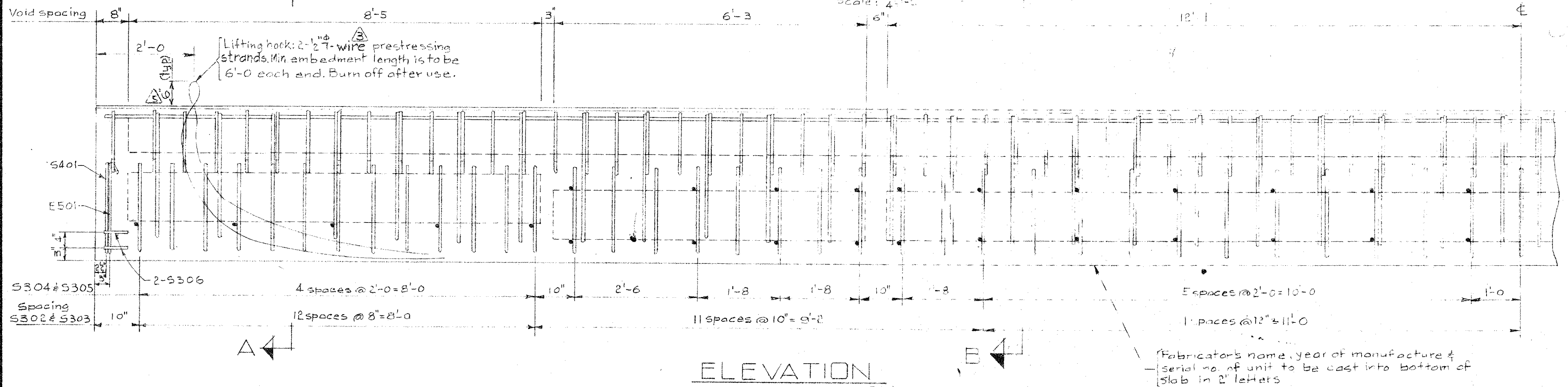
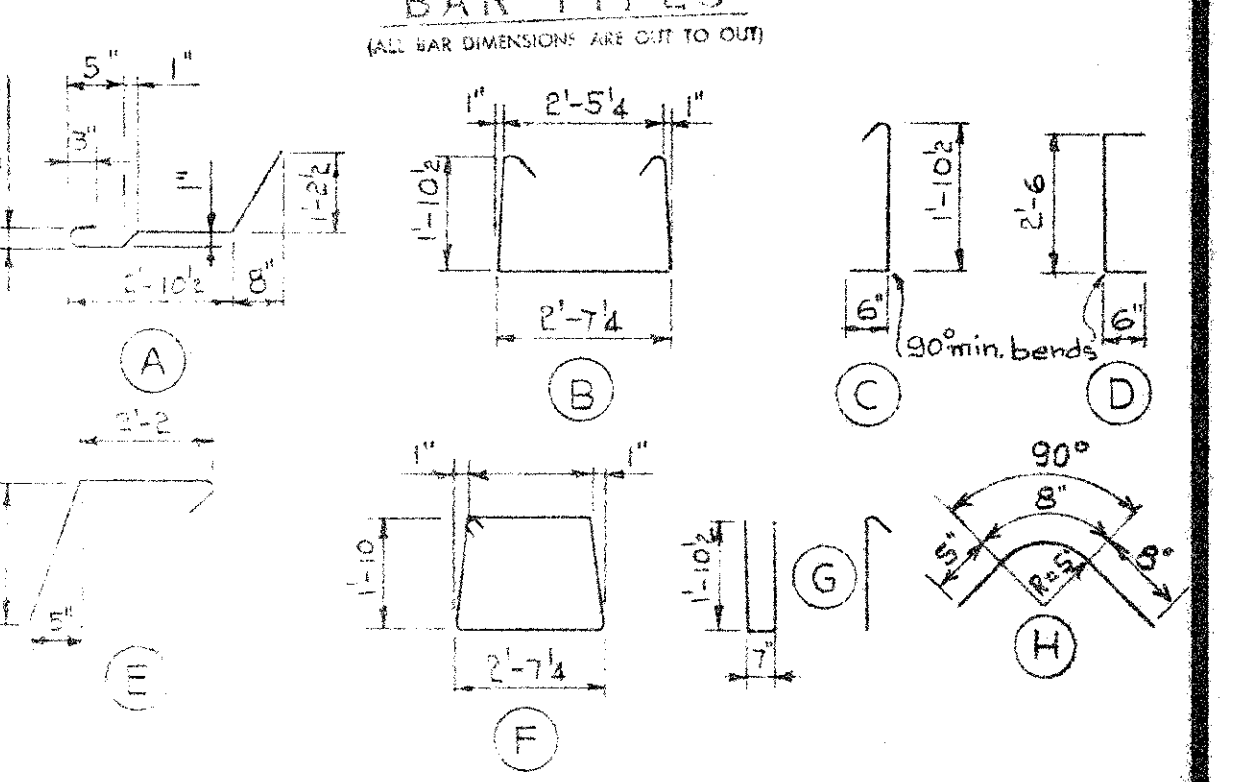


DESIGNED BY R.W. KORNELSEN DATE March 19 66
 CHECKED BY F.Y. DATE April 19 66



BAR LIST	NO.	SIZE	TYPE	LENGTH	WEIGHT
S301	3	9/2"	A	4'-7"	15.8
S302	3	7/0"	B	7'-0"	18.4
S303	3	7/0"	C	2'-8"	7.0
S304	3	6/4"	Str.	1'-4"	3.2
S305	3	5/4"	Str.	2'-8"	5.4
S306	3	4"	D	3'-8"	6
S401	4	2"	F	9'-6"	1.3
S402	4	6"	Str.	29'-6"	11.8
E501	5	4/8"	E	5'-2"	25.9
S307	3	24"	H	1'-9"	2.2
Total					916 lbs



NOTE:
 Each group of S304 & S305 bars may be replaced by an alternate #3 bar tack welded to the stirrups and shaped thus:

GENERAL NOTES

1. All steel shall be of standard weight except allowable initial yield stress = 36,000 p.s.i. in tension.

2. All steel shall be of standard weight except allowable initial yield stress = 36,000 p.s.i. in tension.

3. All steel shall be of standard weight except allowable initial yield stress = 36,000 p.s.i. in tension.

4. All steel shall be of standard weight except allowable initial yield stress = 36,000 p.s.i. in tension.

5. All steel shall be of standard weight except allowable initial yield stress = 36,000 p.s.i. in tension.

6. All steel shall be of standard weight except allowable initial yield stress = 36,000 p.s.i. in tension.

7. All steel shall be of standard weight except allowable initial yield stress = 36,000 p.s.i. in tension.

8. All steel shall be of standard weight except allowable initial yield stress = 36,000 p.s.i. in tension.

9. All steel shall be of standard weight except allowable initial yield stress = 36,000 p.s.i. in tension.

10. All steel shall be of standard weight except allowable initial yield stress = 36,000 p.s.i. in tension.

SUPERSEDED
 BY 5-886-70

NO.	DATE	DESCRIPTION	BY
1	Oct. 20/69	Bars, anchor bolts, notes, etc.	R.W.K.
2	Feb. 11/68	Lifting hook	L.K.
3	Feb. 27/68	Prestressing strands	R.Ch.
4	Oct. 2/67	Anchor bolt assembly & finishes	B.W.S.
5	Aug. 22/66	Moved top centre bar up 2"	V.B.

PRESTRESSED CONCRETE
 58 FT SPAN
 25" TYPE M CURB STRINGER

GOVERNMENT OF THE PROVINCE OF ALBERTA
 DEPARTMENT OF HIGHWAYS
 BRIDGE BRANCH, EDMONTON

FILE NO. _____ HWY. NO. _____ DWG. NO. _____
 LOCATION _____ SCALE shown _____
 STREAM _____ SHEET OF 5-886