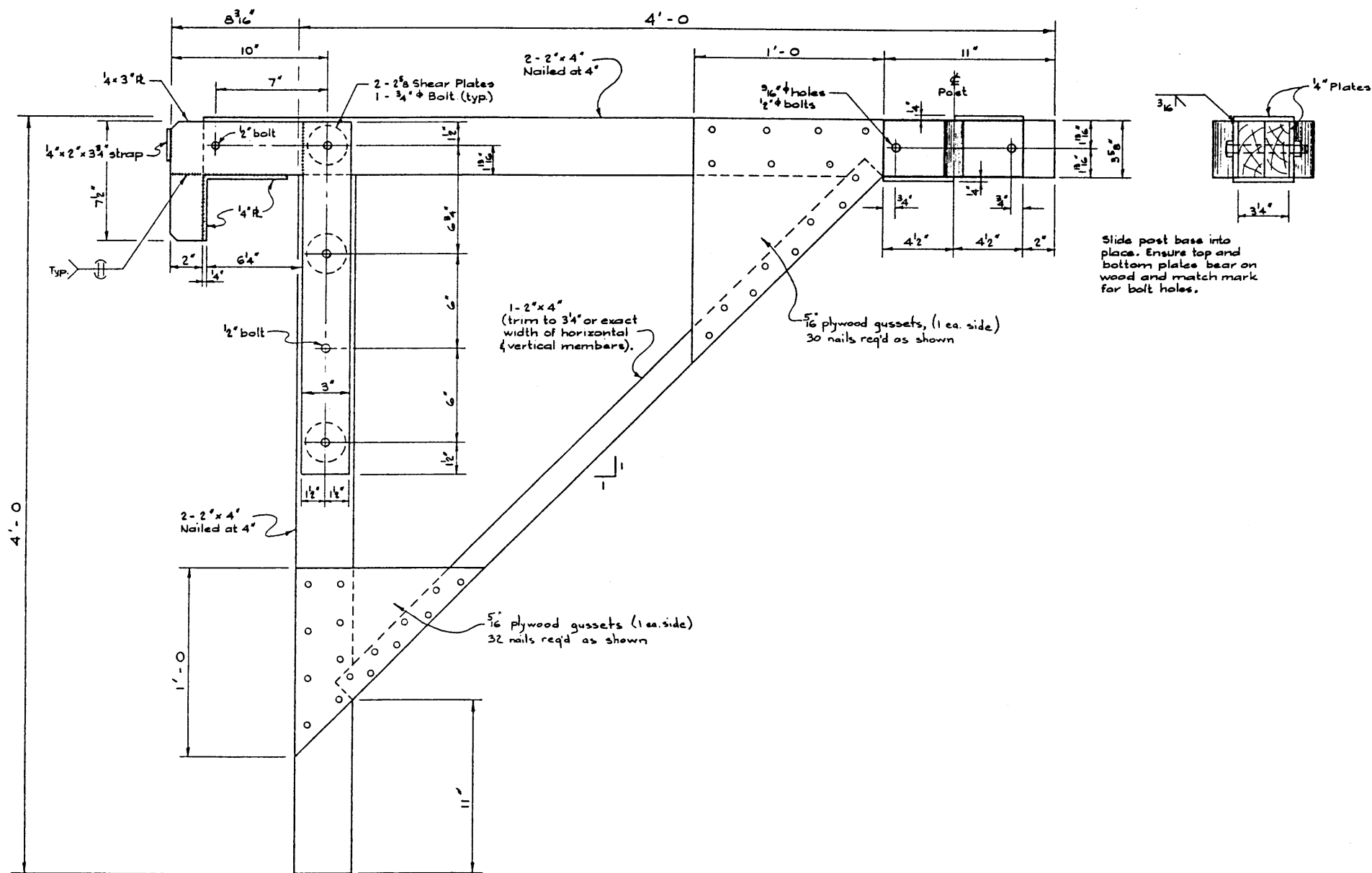


PLAN
Scale: 3" = 1'-0"



Slide post base into place. Ensure top and bottom plate bear on wood and match mark for bolt holes.

NOTES

- All lumber shall be hand selected construction grade spruce or better.
- All nails are 2 1/2" coated common wire nails.
- Bracket spacing shall not exceed 10'-0" C/C.
- Allowable Loading (For platform width of 3'-0"):
 - For spacing of 10'-0", allowable load = 45 lbs./sq. ft.
 - For spacing of 6'-0", allowable load = 75 lbs./sq. ft.
 - Concentrated load at outer end - 800 lbs. (not simultaneous with uniform loading).
- Top guardrails shall be not less than 36" nor more than 42" in height above platform level. In addition the scaffold is to have a guardrail between the top guardrail and the platform.
- The bracket is designed for National Building Code allowable stresses.
- The scaffold is to be used in conjunction with safety lines.

SPECIAL NOTE

The allowable loads given do not imply that the supporting formwork and in particular the walers are necessarily adequate in all cases to support these loads.

DESIGNED BY: R. L. Lyase
 DETAILED BY: V. Beychuk
 CHECKED BY: D. P. [Signature]

DATE: April 1966
 DATE: April 1966
 DATE: May 1966

SCAFFOLD BRACKET

GOVERNMENT OF THE PROVINCE OF ALBERTA
 DEPARTMENT OF HIGHWAYS
 BRIDGE BRANCH, EDMONTON

FILE NO. _____ HWY. NO. _____ DWG. NO. _____
 LOCATION _____ SCALE 3" = 1'-0" SHEET 1 OF 1 S-887
 STREAM _____

NO.	DATE	DESCRIPTION	BY

①

