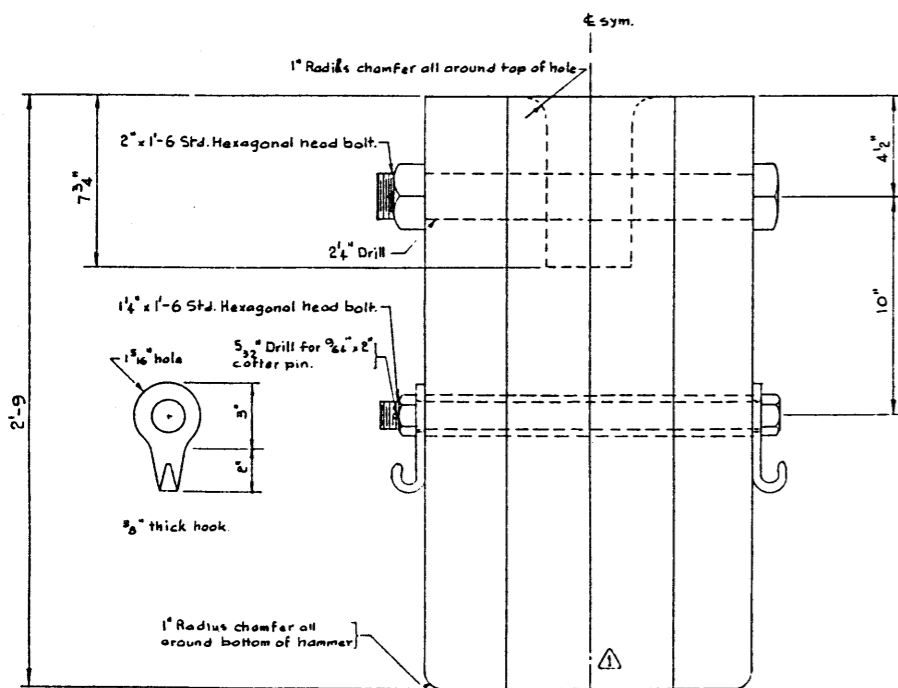
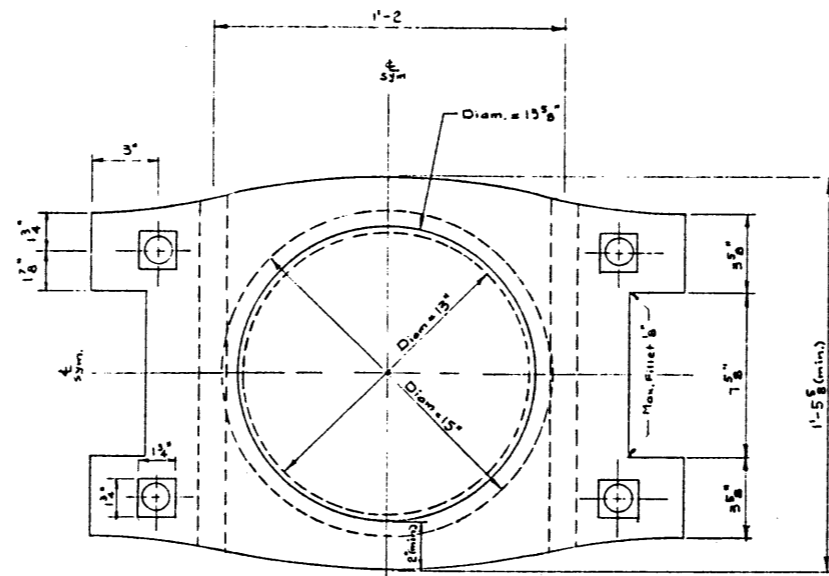


PLAN
Scale: 3"=1'-0"

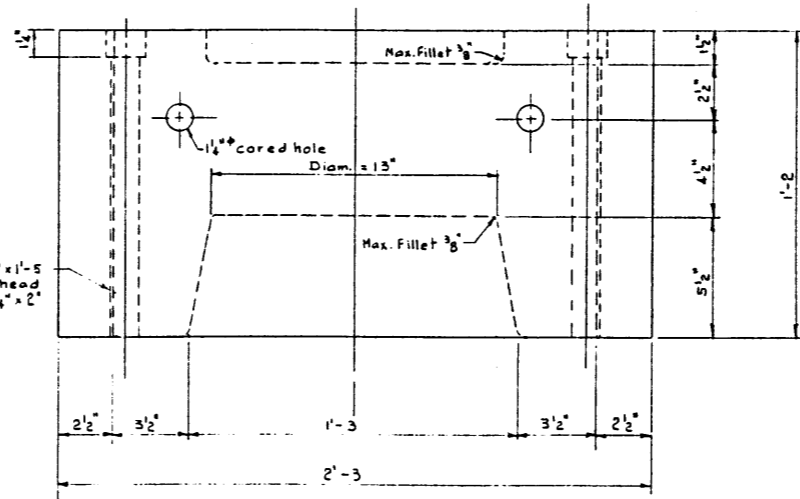


ELEVATION
Scale: 3"=1'-0"

PILE HAMMER

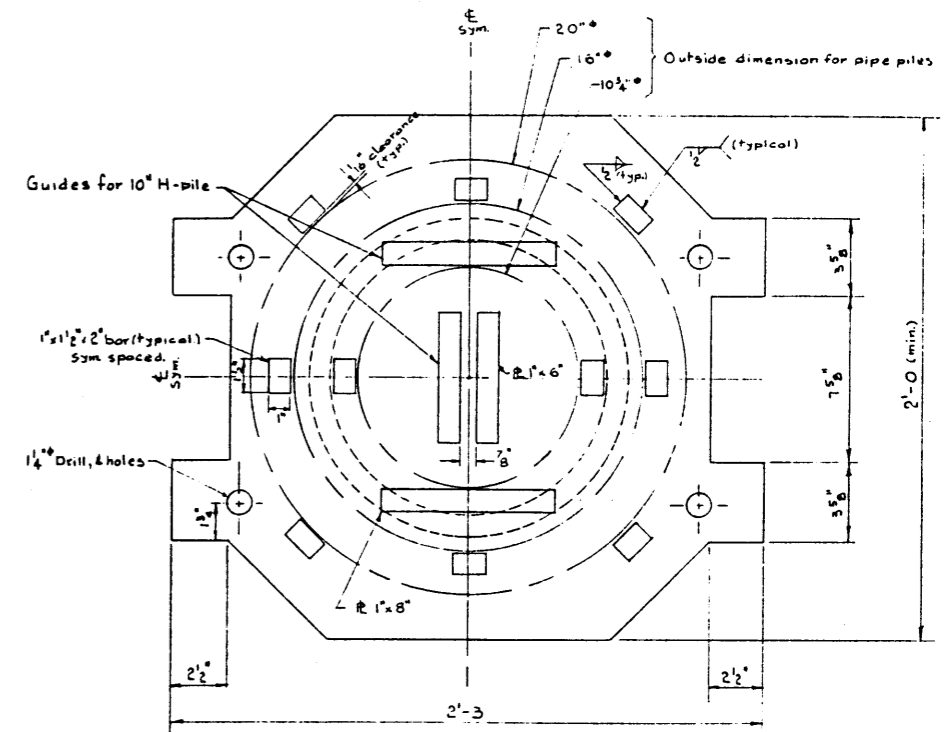


PLAN
Scale: 3"=1'-0"

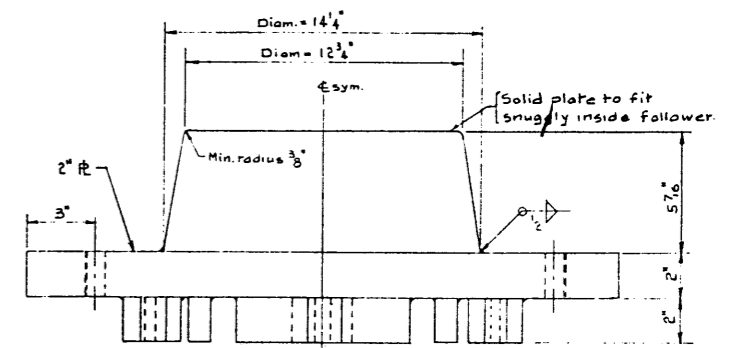


ELEVATION
Scale: 3"=1'-0"

FOLLOWER



BOTTOM VIEW
Scale: 3"=1'-0"



ELEVATION
Scale: 3"=1'-0"
FOLLOWER ADAPTER

-GENERAL NOTES-

- Pile Hammer and follower are to be cast in single pours. No other way will be accepted.
- Plate to be preheated to 95°C for 3" either side of the weld before the weld is made.
- Steel for follower adapter shall meet C.S.A. Spec. G40.21 Grade 44W.
- Pile Hammer and Follower are to be cast of ductile iron meeting A.S.T.M. A 536-71 Grade 60-40-18.

APPROXIMATE WEIGHTS
 • Pile Hammer: 3400 lbs.
 • Follower: 1250 lbs.
 • Follower Adapter: 550 lbs.

DESIGNED BY _____ DATE April 19 66.
 CHECKED BY _____ DATE April 19 66.
 F. Y. L.

NO.	DATE	DESCRIPTION	BY
1	DEC. 2, 1976	1/8" bolts omitted, note changes	R.V.K.

STANDARD
 PILE HAMMER
 FOLLOWER &
 FOLLOWER ADAPTER

GOVERNMENT OF THE PROVINCE OF ALBERTA
 DEPARTMENT OF HIGHWAYS
 BRIDGE BRANCH, EDMONTON

FILE NO. _____ HWY. NO. _____ DWG. NO. _____
 LOCATION _____ SCALE 3"=1'-0" SHEET 5-888
 STREAM _____ SHEET _____ OF _____