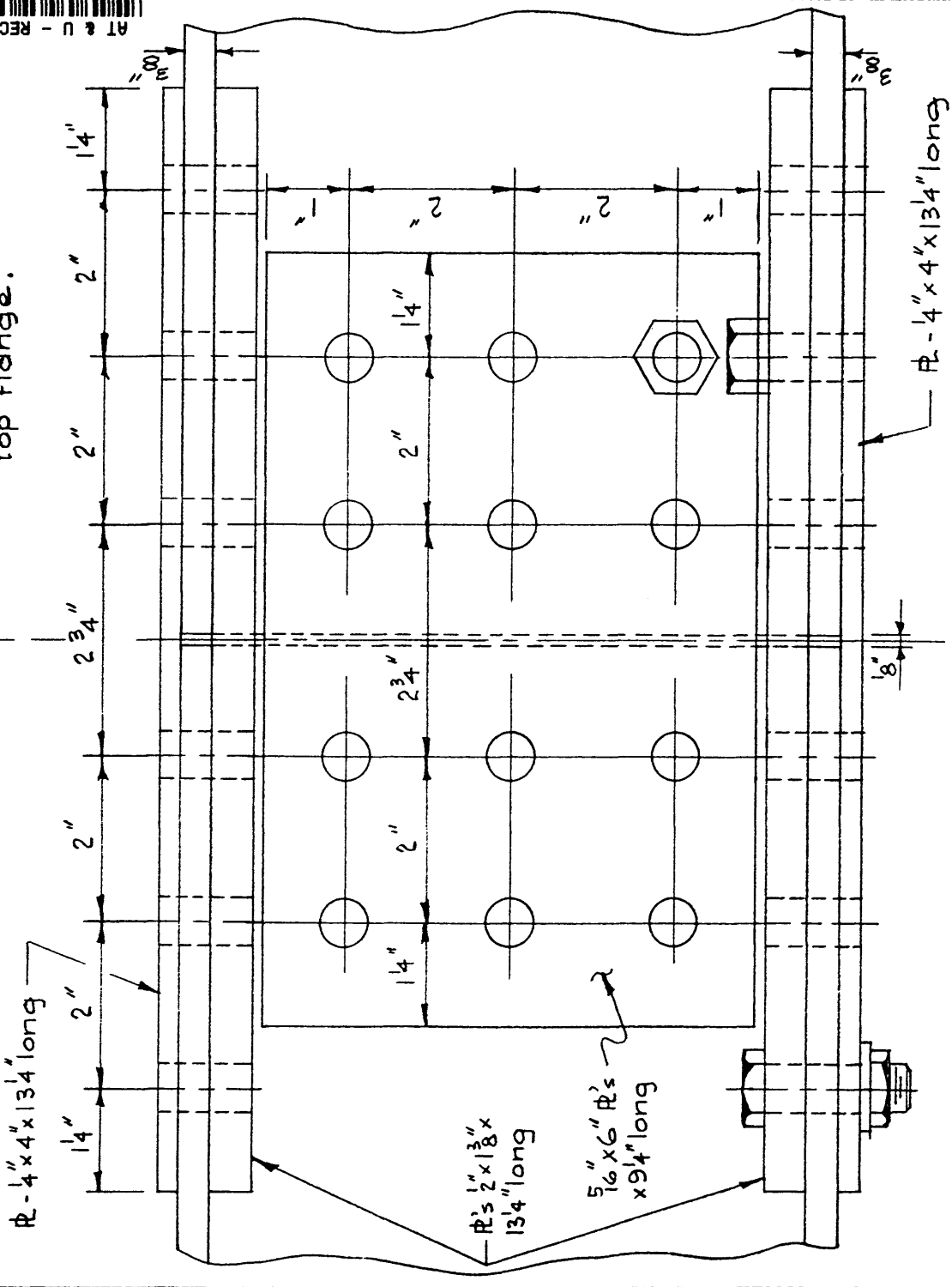
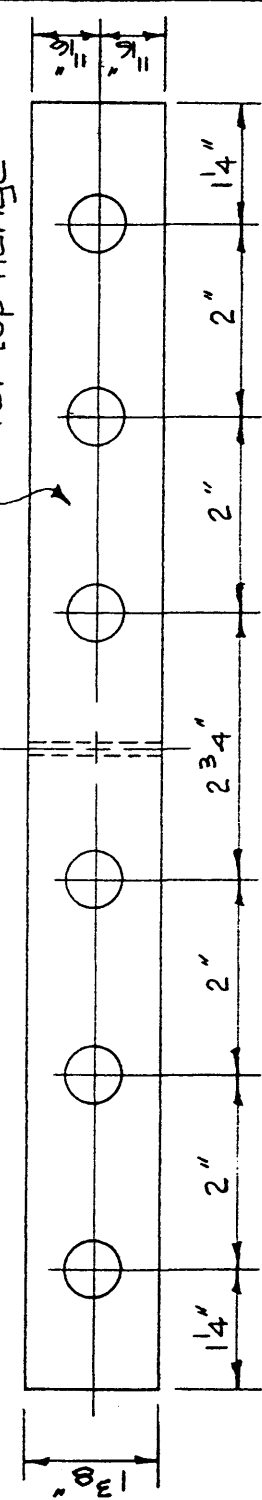


NOTE:  
Bottom flange similar to top flange.



NOTE:  
All holes to be  $2\frac{1}{32}$ "  $\phi$ .  
Use  $5/8$ "  $\phi$  bolts, 65ST6 or galvanized steel.



NOTE:  
All material 65ST6 Aluminum.

NEEDLE BEAM SPLICE  
8" ALUMINUM I SHAPE NO. 28012

Scale: Half Size

S - 903

①