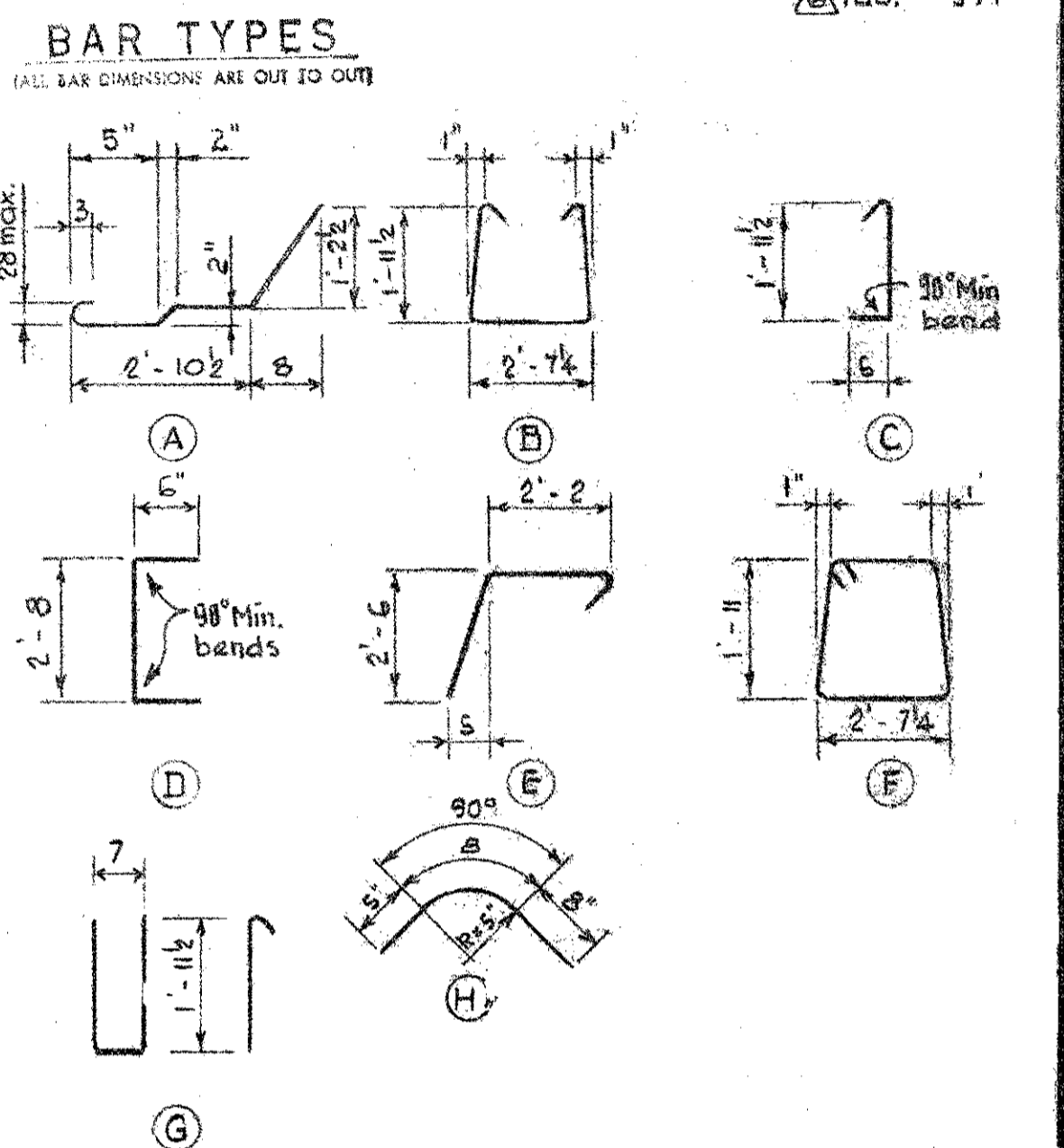


BAR LIST						
MARK	QTY	NO.	TYPE	LEN. (ft)	WEIGHT (lbs)	
SC 301	3	96	A	4'-8"	165	
S 302	3	71	B	7'-2"	121	
S 303	3	71	C	2'-9"	73	
S 304	3	64	Str.	1'-6"	56	
S 305	3	64	Str.	2'-8"	64	
S 306	3	4	D	3'-8"	6	
S 401	4	2	F	9'-8"	13	
S 402	4	6	Str.	30'-6"	122	
S 501	5	48	E	5'-2"	159	
E 501	5	4	G	5'-6"	23	
S 307	3	24	H	1'-9"	16	
					Total lbs.	855
						971



GENERAL NOTES-

DESIGN
 A.A.S.H.O. 1911 Specifications except allowable initial concrete stress = 205 p.s.i. in tension.

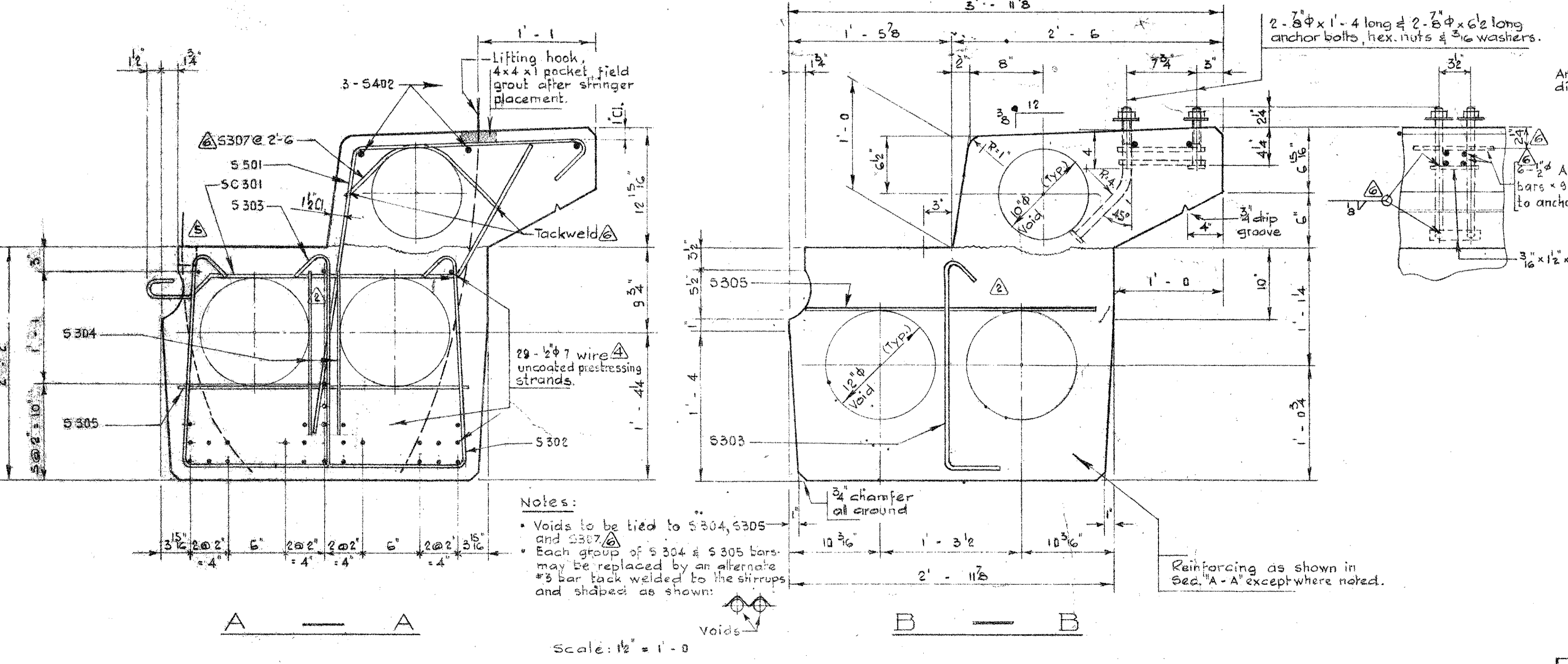
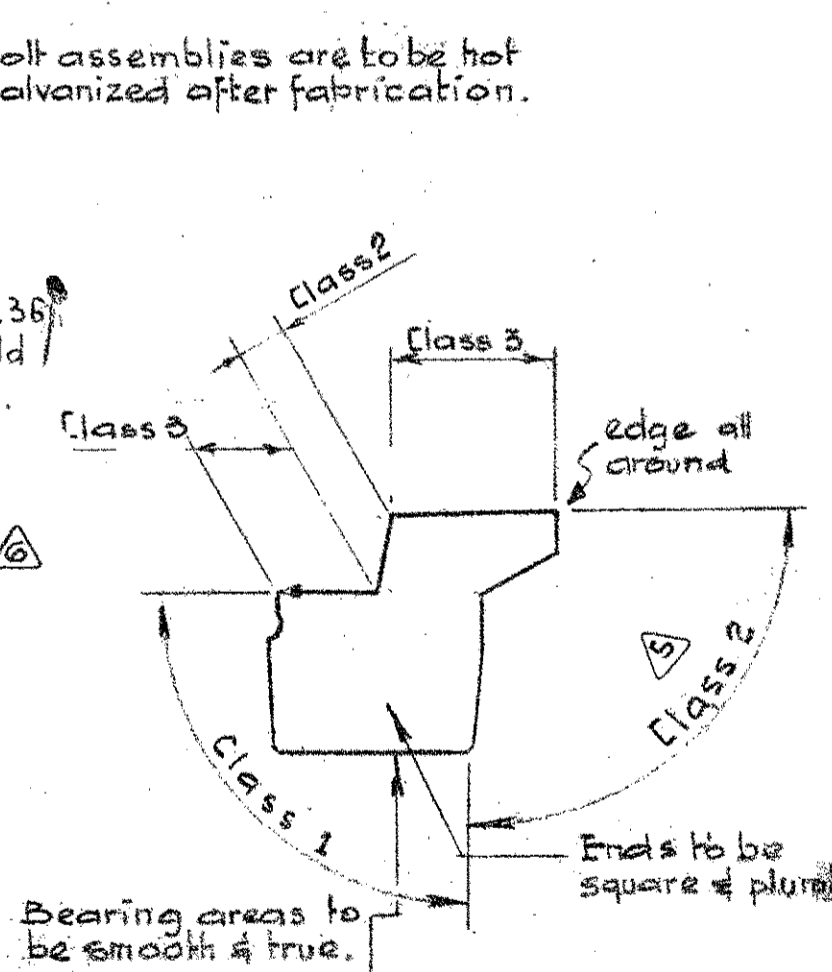
LOADING
 3/5 of one wheel line of an H20-S16-44 truck plus full dead load plus 2" wearing surface.

MATERIALS
 Concrete shall be of standard weight aggregate with a maximum size of 2". Minimum compressive strength shall be 5000 p.s.i. at 28 days. Air entrainment to be not less than 5%.

FABRICATION
 Reinforcement: Diameters of all bends shall conform to the recommended sizes and all hooks, unless otherwise noted shall conform to the recommended sizes detailed in the A.C.I. Manual of Standard Practice for Detailing Reinforced Concrete Structures.
 Prestressing steel: Initial tensioning load = 25.2 k/cable
 Design load = 20.16 k/cable
 Concrete must attain 4000 p.s.i. compressive strength before the prestressing force is transferred.
 Anchor bolt assemblies are to be cast in stringer at spacings as required.
 Units are to conform to the requirements of the Bridge Branch Specifications for Prestressed Concrete Bridge Girders.

The surface of grout keys shall be sandblasted.
 If end blockouts are called for their surfaces shall be sandblasted.

ERECTION
 Lifting force at each hook must be vertical at all times.
 Stringer surface must be level at all times.



NO.	DATE	DESCRIPTION	BY
1	Sep. 16/69	Bars, anchor bolts, notes, etc.	R.W.K.
2	Feb. 11/69	Lifting hook & surface finish	L.K.
3	Feb. 23/68	Prestressing strands	R.C.H.
4	Oct. 28/67	Anchor bolt assembly	S.M.S.
5	Aug. 17, 1966	Removed drains - re-lasted strand	V.B.
6	May 26, 1966	Redrawn	P.S.

SUPERSEDED
 BY 5-908-70

PRESTRESSED CONCRETE
 60 FT SPAN
 26" TYPE M CURB STRINGER

GOVERNMENT OF THE PROVINCE OF ALBERTA
 DEPARTMENT OF HIGHWAYS
 BRIDGE BRANCH, EDMONTON

FILE NO. _____ HWY. NO. _____ DWS. NO. _____
 LOCATION _____ SCALE _____
 STREAM _____ SHEET _____ OF _____ 5-908-69

DESIGNED BY: R.W. KENNEDY
 CHECKED BY: R.E.P.
 DATE: MAY 1969