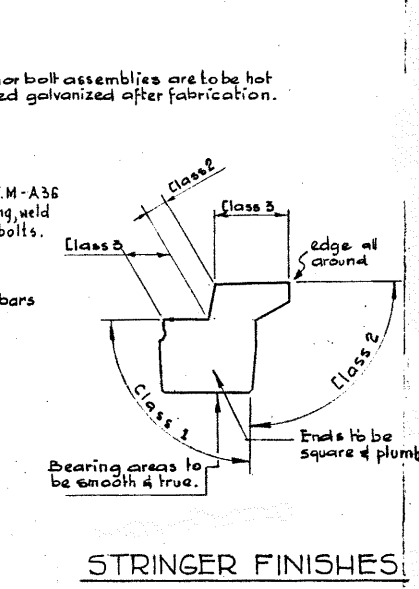
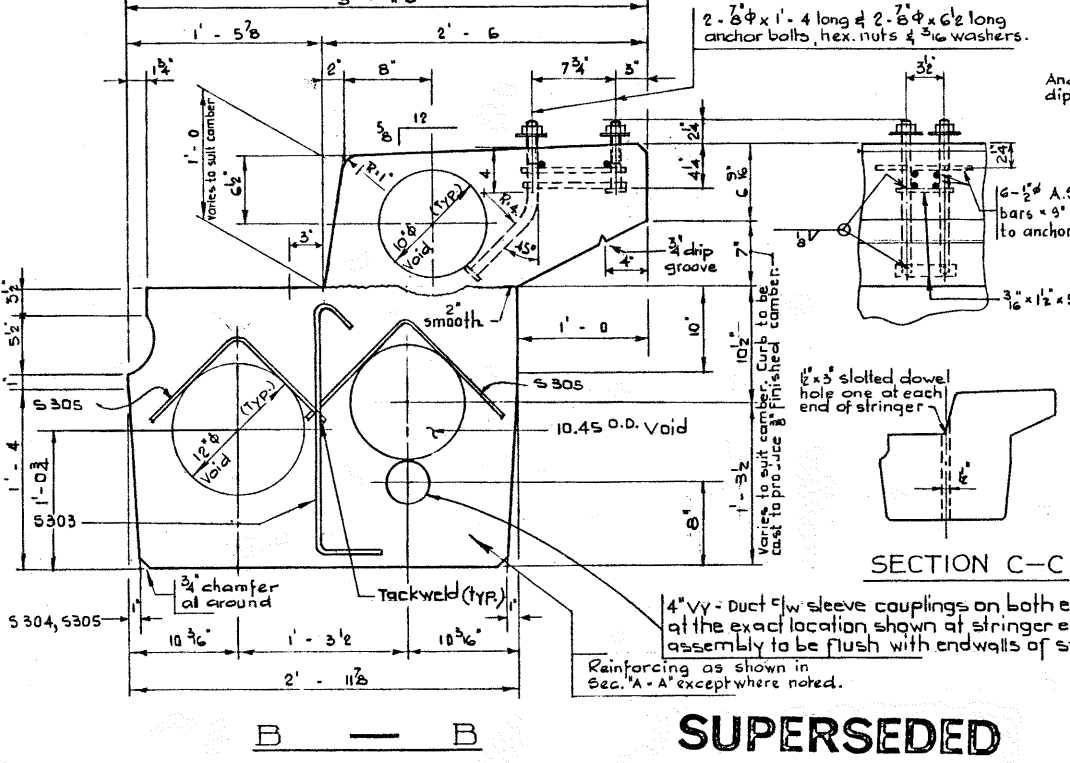
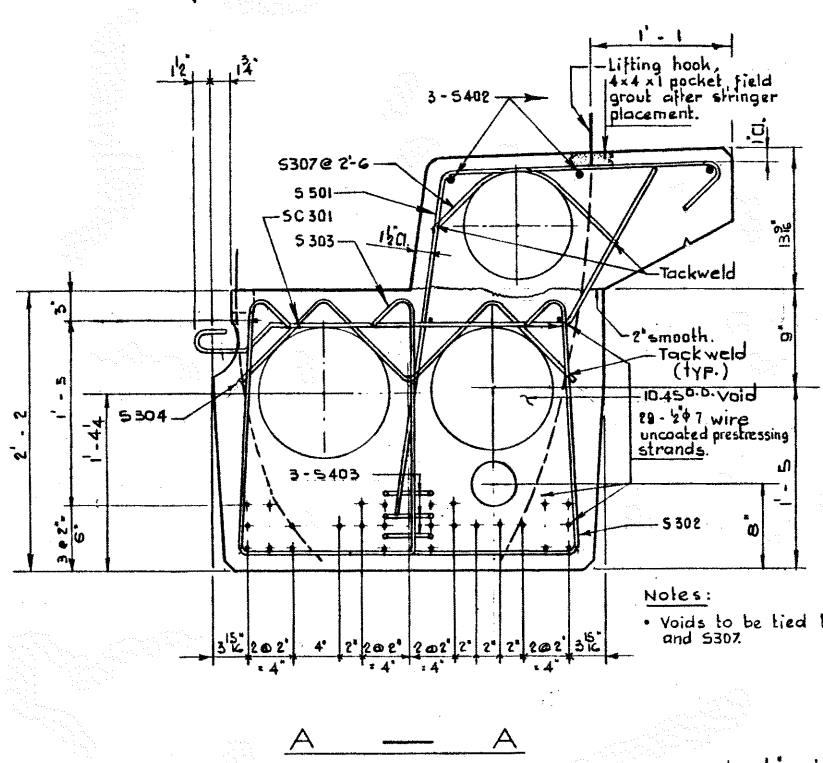
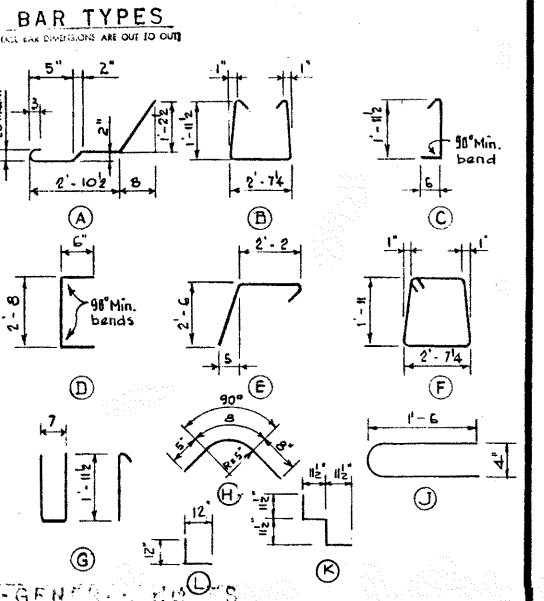


BAR LIST	NO.	QTY	TYPE	UNIT	WT.
SC 301	3	96	A	4'-8"	125
S 302	3	71	B	7'-2"	121
S 303	3	71	C	2'-9"	73
S 304	3	50	L	2'-0"	36
S 305	3	10	K	3'-10"	15
S 306	3	4	D	3'-8"	6
S 401	4	2	F	9'-8"	13
S 402	4	6	shr	30'-6"	122
S 501	5	48	E	5'-2"	159
S 502	5	4	G	5'-6"	23
S 503	3	24	H	1'-9"	16
S 504	4	6	J	3'-0"	11
Total lbs. :					933



GENERAL NOTES

DESIGN: A.A.S.H.O. 1961 Specifications, except allowable initial concrete stress = 285 p.s.i. in tension. Loading: 3/5 of one wheel line of an H20-S16-44 truck plus full dead load plus 2" wearing surface.

MATERIALS: Concrete shall be of standard weight aggregate with a maximum size of 3/4". Minimum compressive strength shall be 5000 p.s.i. at 28 days. Air entrainment shall be not less than 5%.

FABRICATION: Reinforcement: Diameters of all bends and details of all hooks unless otherwise noted shall conform to the recommended sizes detailed in the A.C.I. Manual of Standard Practice for Detailing Reinforced Concrete Structures. Prestressing Steel: Initial tensioning load = 35.2 k/strand. Design load = 20.16 k/strand. Concrete must attain 4,000 p.s.i. compressive strength before the prestressing force is transferred. Anchor bolt assemblies are to be cast in stringer at spacings as required. Units are to conform to the requirements of the Bridge Branch Specifications for Prestressed Concrete Bridge Units. The surface of grout keys shall be sandblasted. If end blockouts are called for their surfaces shall be sandblasted.

ERECTION: Lifting force at each hook must be not more than 1/3 of the vertical line at all times. Stringer face must be level at all times.

DESIGNED BY: R.W. Komelssen
 DATE: Apr 1966
 CHECKED BY: R.E.B.
 DATE: May 1966

Notes:
 • Voids to be tied to S 304, S 305 and S 307.

SUPERSEDED
 DRAWING IN USE
 FROM OCT. 15th/70 IS
 A PHOTOGRAPH OF
 TRACING.

APPROVED: _____ CHIEF, BRIDGE ENGINEER

NO.	DATE	DESCRIPTION	BY
		Redrawn.	S.L.
REVISIONS			

SUPERSEDED (3)

PRESTRESSED CONCRETE
 60 FT. SPAN
 26" TYPE M CURB STRINGER

GOVERNMENT OF THE PROVINCE OF ALBERTA
 DEPARTMENT OF HIGHWAYS
 BRIDGE BRANCH, EDMONTON

FILE NO. _____ HWY. NO. _____ DWG. NO. _____
 LOCATION _____ SCALE as shown _____
 STREAM _____ SHEET _____ OF 5-908-70