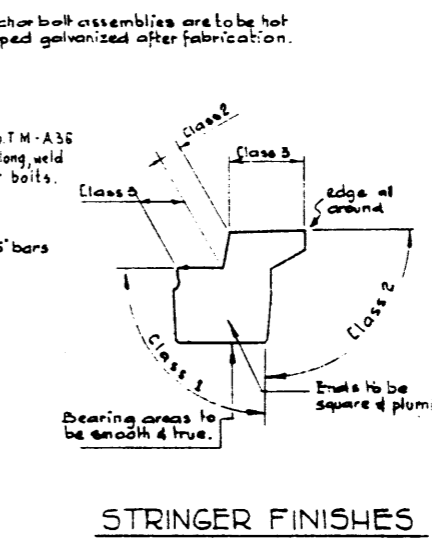
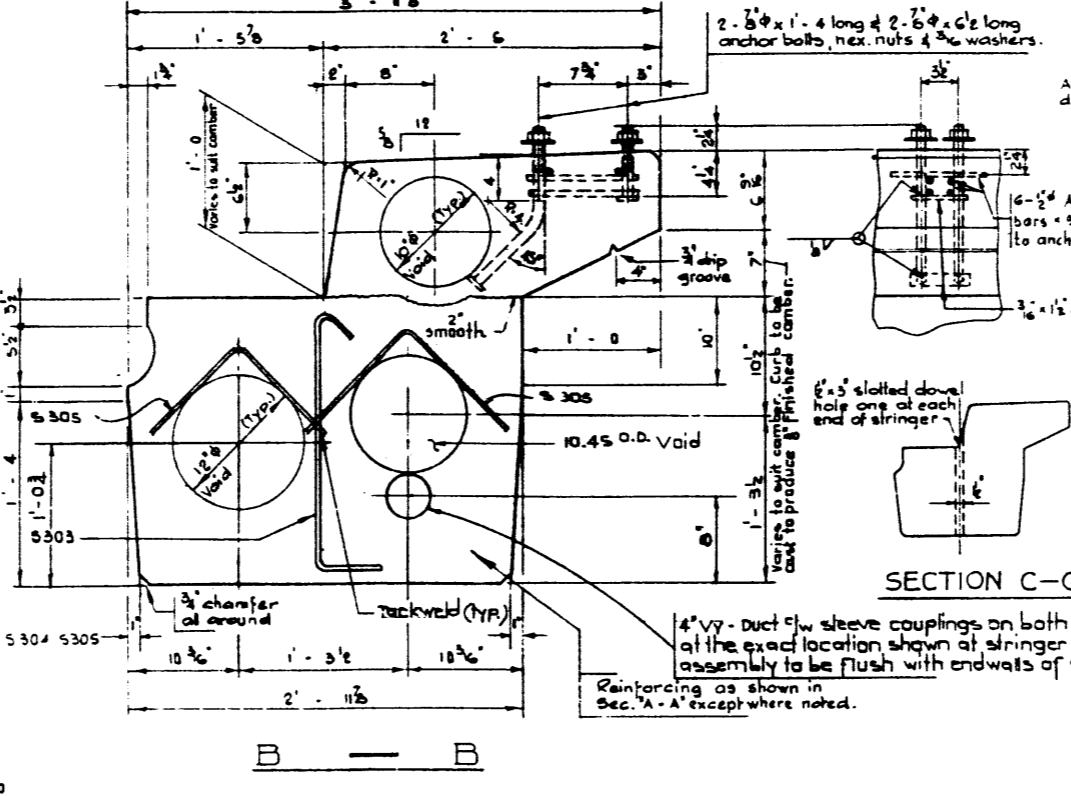
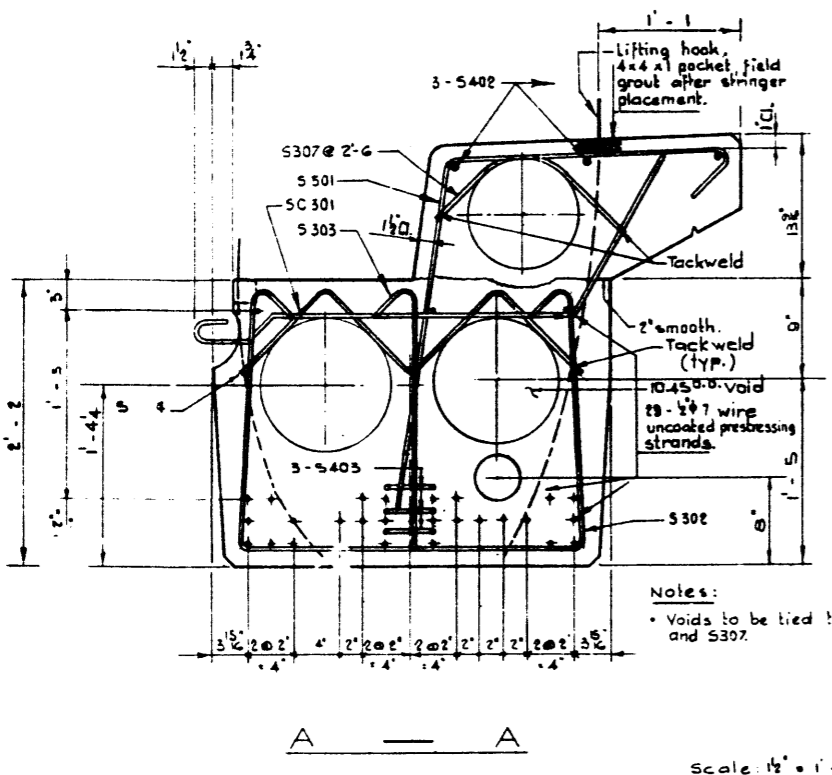
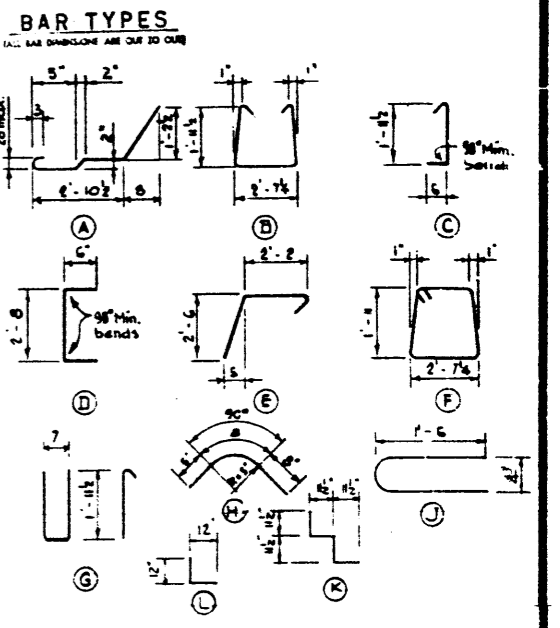


BAR	NO.	TYPE	QTY	WEIGHT
SC 301	3	85	A	4-8
S 501	3	71	B	7-2
S 502	3	71	C	7-9
S 503	3	60	L	2-0
S 504	3	10	K	3-10
S 505	3	4	D	3-8
S 506	4	2	F	9-8
S 507	4	6	str	30-6
S 508	5	48	B	5-2
S 509	5	4	G	5-6
S 510	3	84	H	1-9
S 511	4	6	J	3-2
Total lbs.:				937



**GENERAL NOTES**

DESIGN  
A.A.S.W.O. 1961 Specifications except allow an initial concrete stress = 285 p.s.i. in tension.  
Loading: 3/5 of one wheel line of an H20-S16-44 truck plus full dead load plus 2" wearing surface.

MATERIAL  
Concrete shall be of standard weight aggregate with a maximum size of 3/4". Minimum compressive strength shall be 5000 p.s.i. at 28 days. Air entrainment shall be not less than 5%.

FABRICATION  
Reinforcement: Diameters of all bends and details of all hooks unless otherwise noted shall conform to the recommended sizes detailed in the A.C.I. Manual of Standard Practice for Detailing Reinforced Concrete Structures.  
Prestressing Steel: Initial tensioning load = 25.2 k/Strand  
Design load = 20.16 k/Strand  
Concrete must attain 4,000 p.s.i. compressive strength before the prestressing force is transferred.  
Anchor bolt assemblies are to be cast in stringer as spacings as required.  
Units are to conform to the requirements of the Bridge Branch Specification for Prestressed Concrete Bridge Units.  
The surface of grout keys shall be sandblasted. If end blockouts are called for their surfaces shall be sandblasted.

ERECTION  
Lifting force at each hook must be not more than 35° from the vertical line at all times. Stringer surface must be level at all times.

DESIGNED BY P.W. Hornelsen DATE Apr. 1966  
 CHECKED BY R.E.B. DATE Apr. 1966  
 DATE May 1966

APPROVED: *[Signature]* BRIDGE ENGINEER  
 Oct 29/70

**PRESTRESSED CONCRETE  
 60 FT. SPAN  
 26" TYPE M CURB STRINGER**

GOVERNMENT OF THE PROVINCE OF ALBERTA  
 DEPARTMENT OF HIGHWAYS  
 BRIDGE BRANCH, EDMONTON

FILE NO. \_\_\_\_\_ HWY. NO. \_\_\_\_\_ BRIDGE NO. \_\_\_\_\_  
 LOCATION \_\_\_\_\_ SCALE AS SHOWN \_\_\_\_\_  
 SHEET \_\_\_\_\_ OF \_\_\_\_\_ 5-908-70

NO.	DATE	DESCRIPTION	BY
1	Oct. 28, 1970	Redrawn	S.L.

REVISIONS