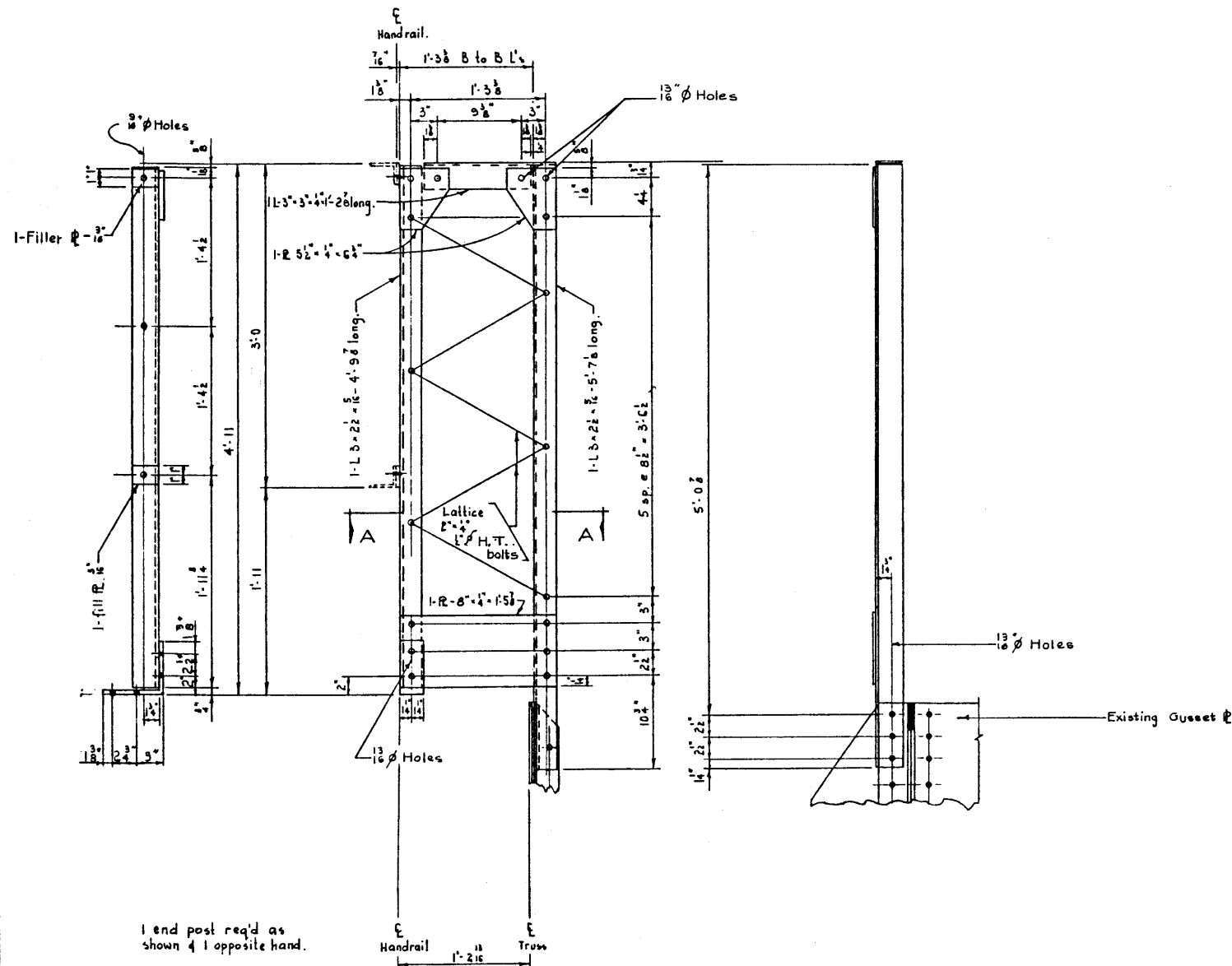
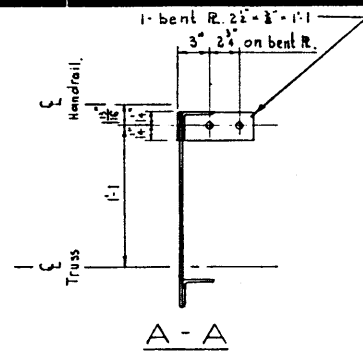


DESIGNED BY: DATE: 19-
 DETAILED BY: D. W. Sawicki (D.A.) DATE: April 20, 1966
 CHECKED BY: DATE: 19-66

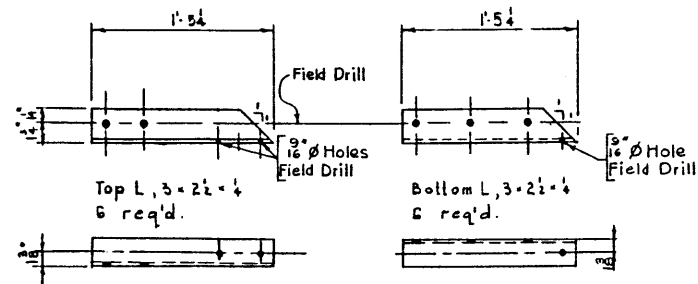


1 end post req'd as shown & 1 opposite hand.

END HANDRAIL SUPPORT POST
 Scale: 1/8" = 1'-0"

-GENERAL NOTES-

- These members are for deleting the sidewalk and reinstalling the sidewalk handrail on the inside of the Truss on the sidewalk side.
- These details are for a single span of the existing Bow River bridge in Canmore. (File No. 167)
- The steel plan number is A 43
- All connections to be made with 3/4" or 1/2" High Tensile Steel bolts conforming to A.S.T.M. Specification A-325.
- All surfaces shall receive one coat of red lead iron oxide paint conforming to Canadian Government Specification Board Specification 1-GP-140.
- All steel to meet A.S.T.M. Specification A-36.



ALSO SUPPLY H.T.S. BOLTS
 30 - 3/4" ϕ x 2" long
 18 - 3/4" ϕ x 3" long
 18 - 1/2" ϕ x 2" long
 18 - 1/2" ϕ x 3" long
 Complete with hex nuts and washers.

**STANDARD 100' PONY TRUSS
 HANDRAIL CONNECTION MEMBERS**



GOVERNMENT OF THE PROVINCE OF ALBERTA
 DEPARTMENT OF HIGHWAYS
 BRIDGE BRANCH, EDMONTON

NO.	DATE	DESCRIPTION	BY
REVISIONS			

FILE NO. _____ HWY. NO. _____ DWG. NO. _____
 LOCATION _____ SCALE _____ Noted _____
 STREAM _____ SHEET _____ OF _____
 5-909

1

AT L U RECORDS CENTRE