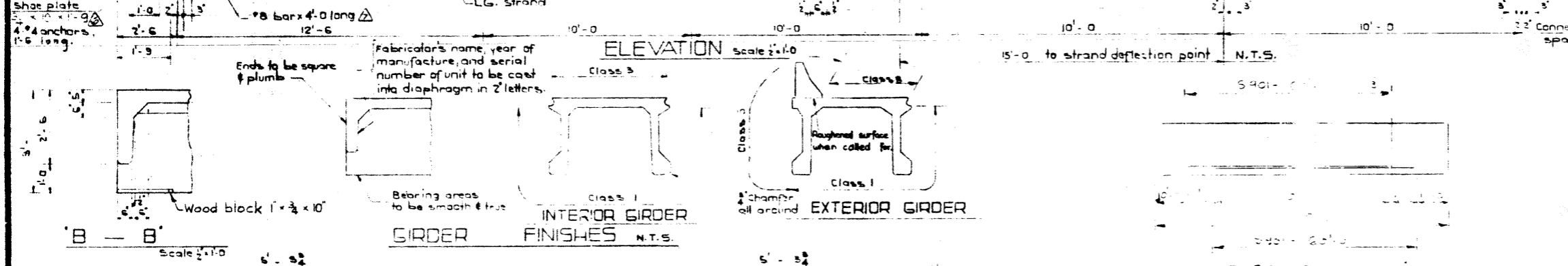
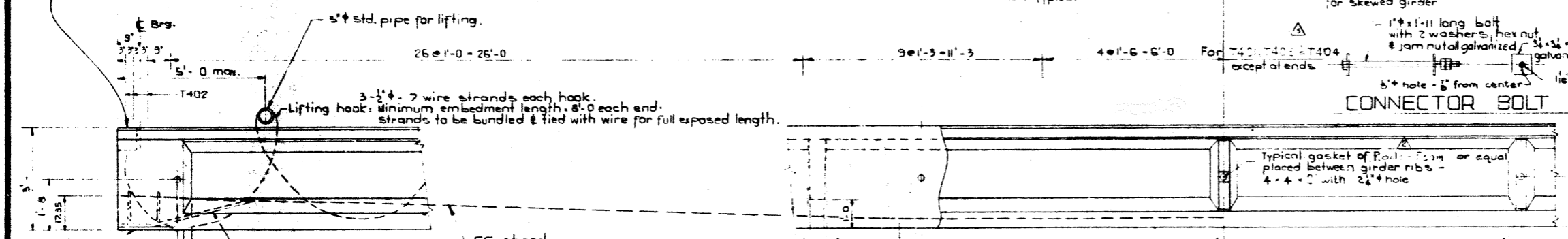
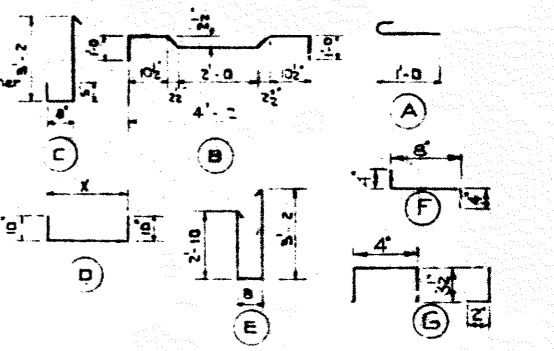


**BAR LIST - For skewed 90'**

BAR	NO	SIZE	TYPE	LENGTH	WEIGHT
S 301	3	280	A	1'-5"	162
S 401	4	21	Str.	30'-8"	430
S 402	4	100	B	6'-4"	426
S 501	5	210	Str.	4'-9"	1050
T 401	4	150	C	4'-9"	501
D 601	6	4	D	4'-2"	36
D 602	6	4	D	6'-0"	40
T 402	4	12	E	7'-6"	61
T 403	8	24	Str.	2'-11"	185
T 404	4	122	F	1'-4"	109
T 405	4	122	G	1'-3"	102
S 901	9	4	shr	60'-0"	87

Total lbs: 3,827

**BAR TYPES:**  
(All bar dimensions are out to out)



**GENERAL NOTES:**  
**DESIGN**  
A.A.S.M.O. 1961 Specification  
Loading: 0.90 of one wheel line of an HS 20-44 truck plus full dead load plus 2" wearing surface

**MATERIALS**  
Concrete shall be of standard weight aggregate with a maximum size of 3". Minimum compressive strength shall be 6000 p.s.i. at 28 days. Entrained air shall be not less than 5%.  
Prestressing steel is 7-wire strand 270 ksi.

**FABRICATION**  
Reinforcement: Diameters of all bars shall conform to the recommended sizes and all hooks, unless otherwise noted shall conform to the recommended sizes detailed in the A.C.I. Manual of Standard Practice for Building Reinforced Concrete Structures.  
Prestressing steel: Initial tensioning load 29.0 kips; design load 23.75 kips.  
Concrete: maximum 5000 p.s.i. compressive strength at 28 days.  
Before the prestressing force is transferred, the prestressing cables shall be 3'-6" 7-wire strand conforming to ASTM Spec. A421, Class B, 270 ksi.  
Units are to conform to the requirements of the Alberta Bridge Branch Specifications for the Manufacture of Prestressed Concrete Bridge Units.  
All work shall be done in accordance with the specifications.

**ERECTION**  
Lifting force of each hook shall be at least 20 kips.  
**SUPERSEDED**  
**SUPERSEDED**  
BY 5-96-73

**PRESTRESSED CONCRETE**  
**90'-0 TYPE FC GIRDER**

GOVERNMENT OF THE PROVINCE OF ALBERTA  
DEPARTMENT OF HIGHWAYS  
BRIDGE BRANCH, EDMONTON

FILE NO. 76024  
LOCATION 14-C-3  
SCALE AS NOTED  
BY S-916

DESIGNED BY L. Kohnmann  
DATE February 19, 63  
CHECKED BY  
DATE

**REVISIONS**

NO.	DATE	DESCRIPTION	BY
1	Mar 3 69	Shoe Plate Anchor Bar	T.B.
2	Nov 8/68	1" hole & giv. shoe	R.Ch.
3	Apr 26/68	Bar List	J.R.C.
4	Apr 23/68	T401 - 3/4" dia. change	P.S.
5	Mar 2/68	Bar length correction	V.R.
6	Nov 3/67	Note and text change	P.S.
7	Oct 23/67	Comments/rebar spaced	R.C.

