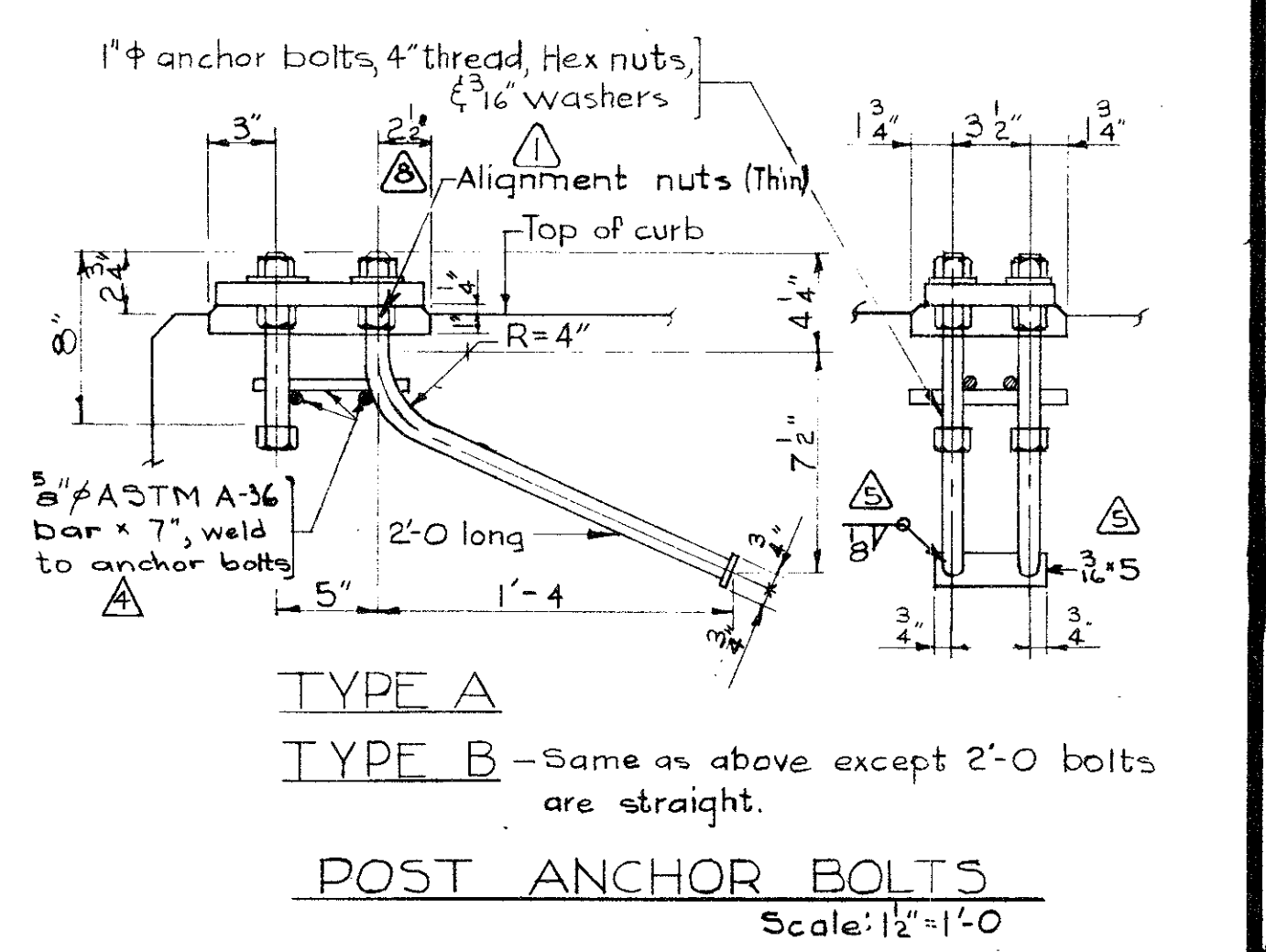
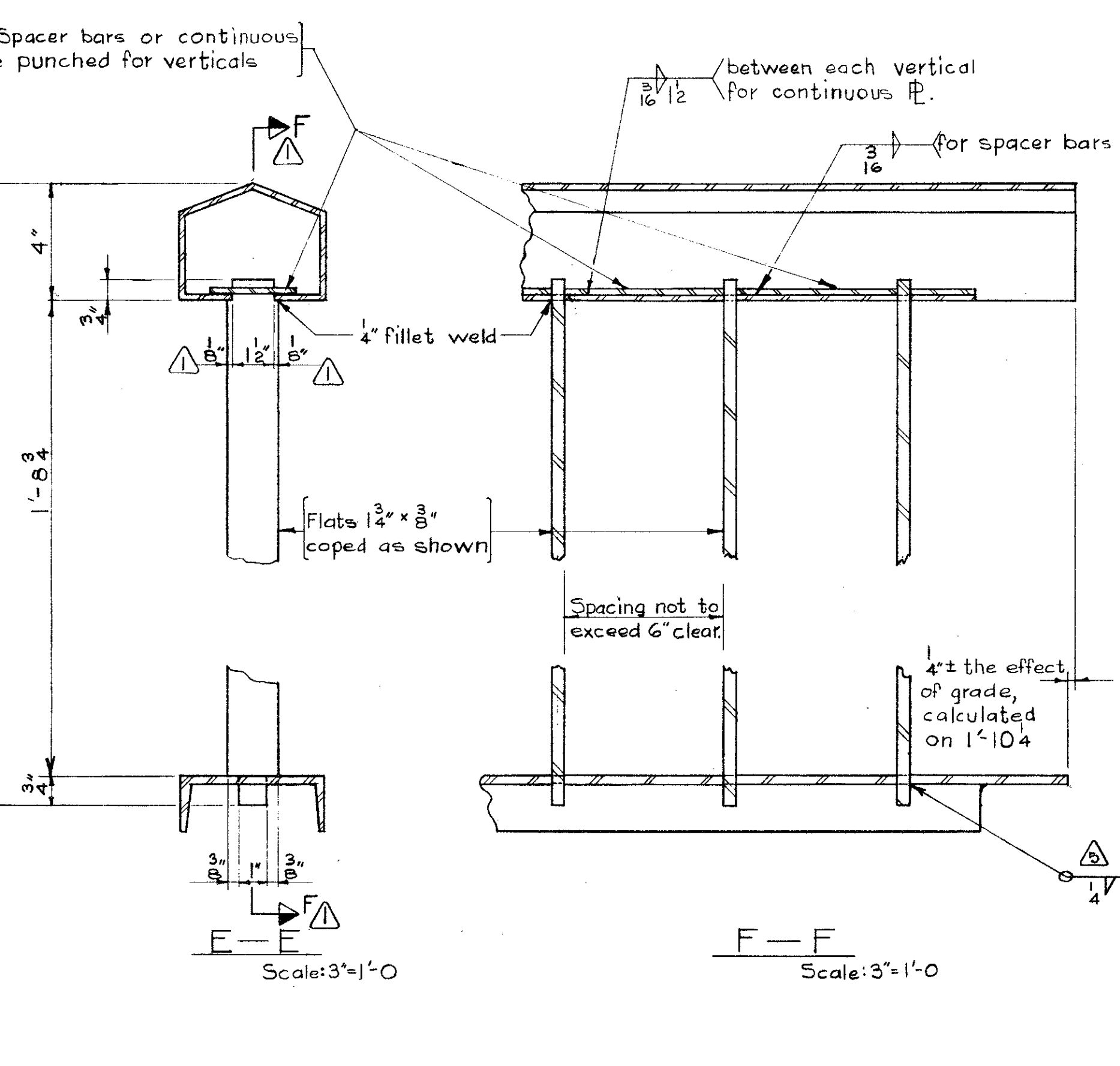
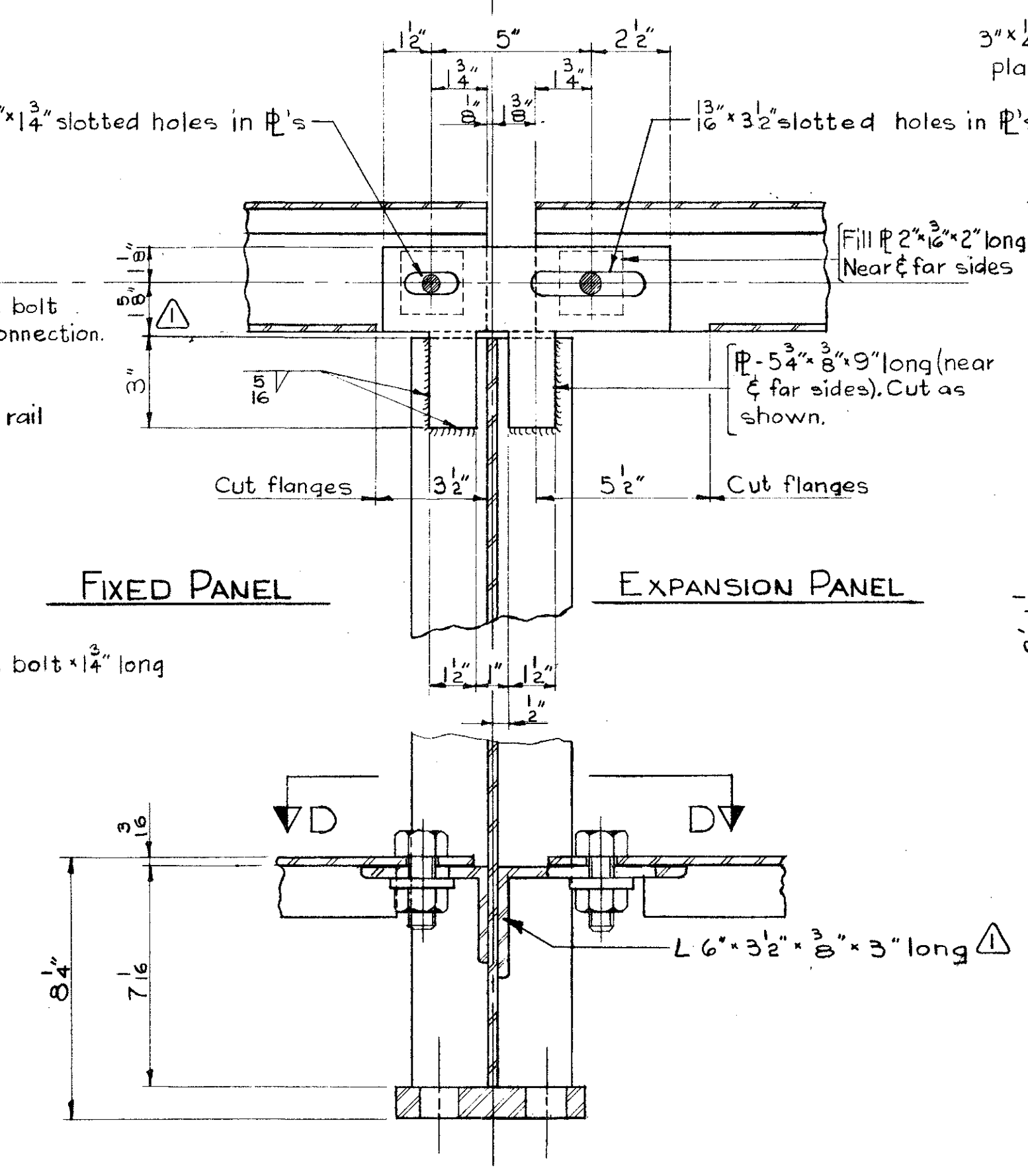
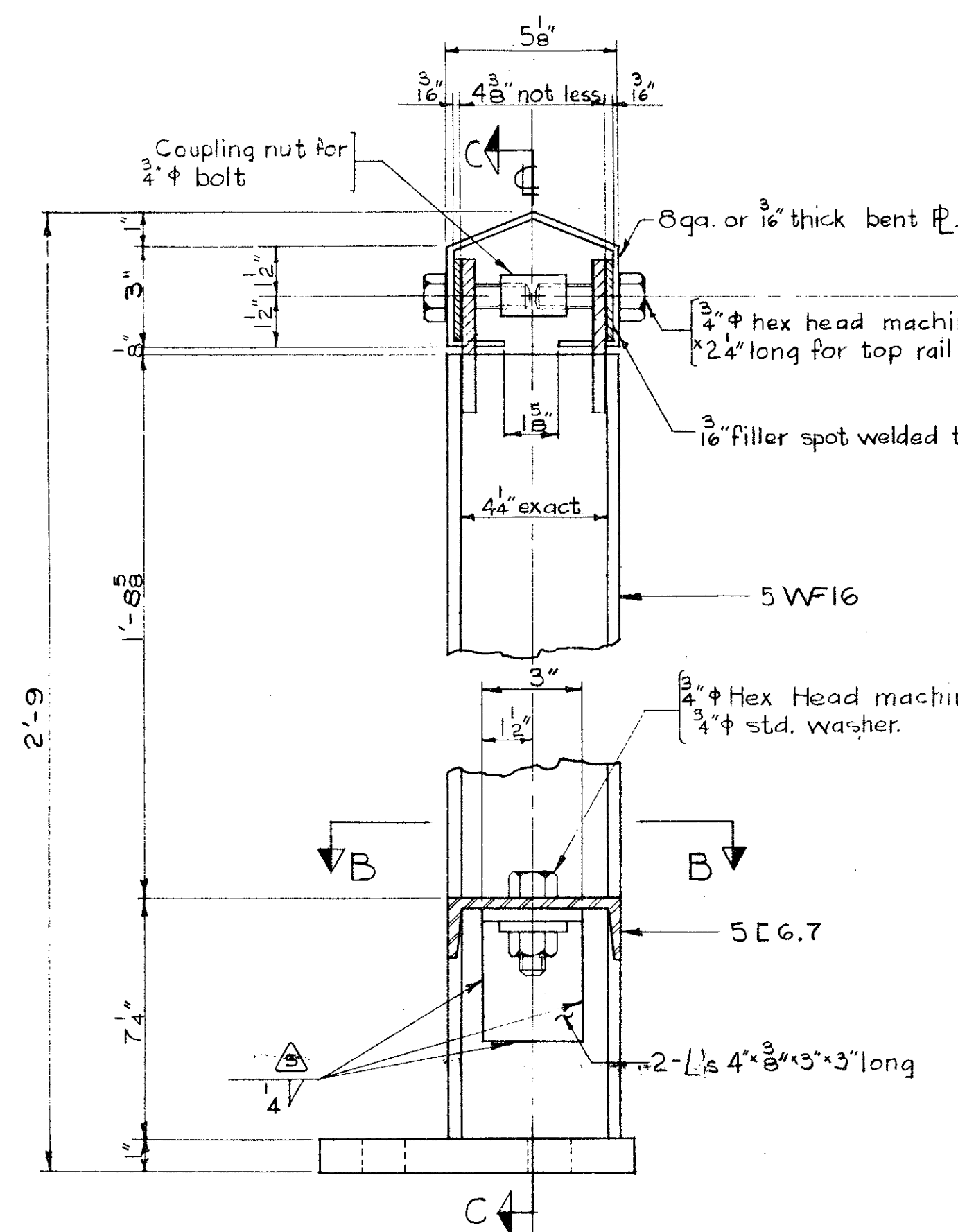
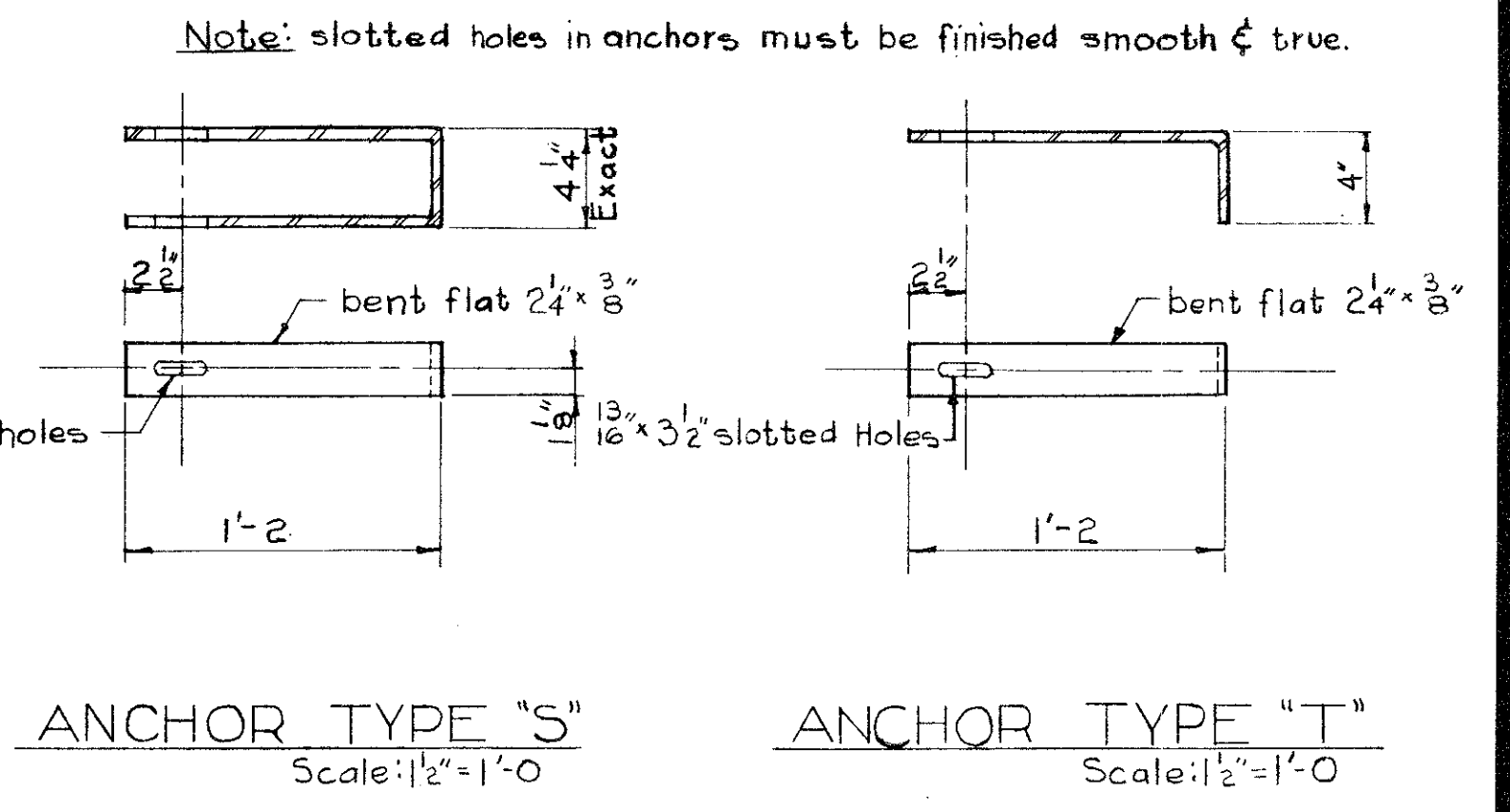
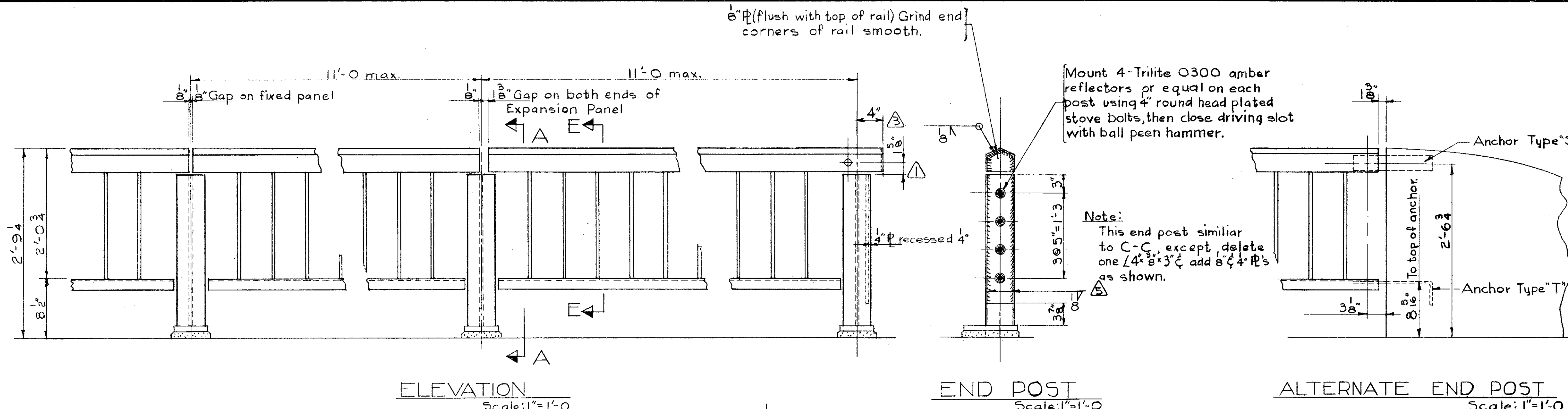
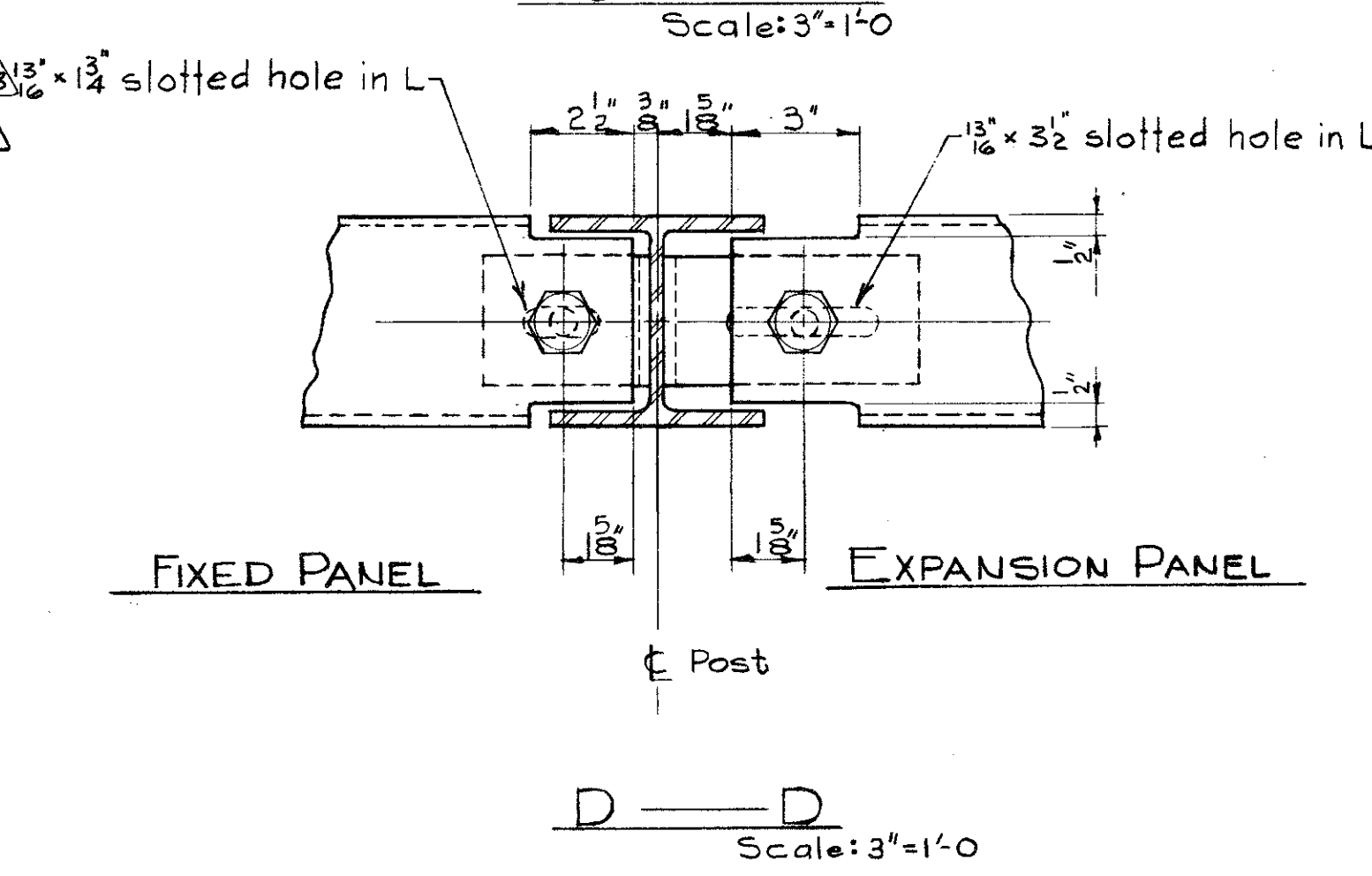
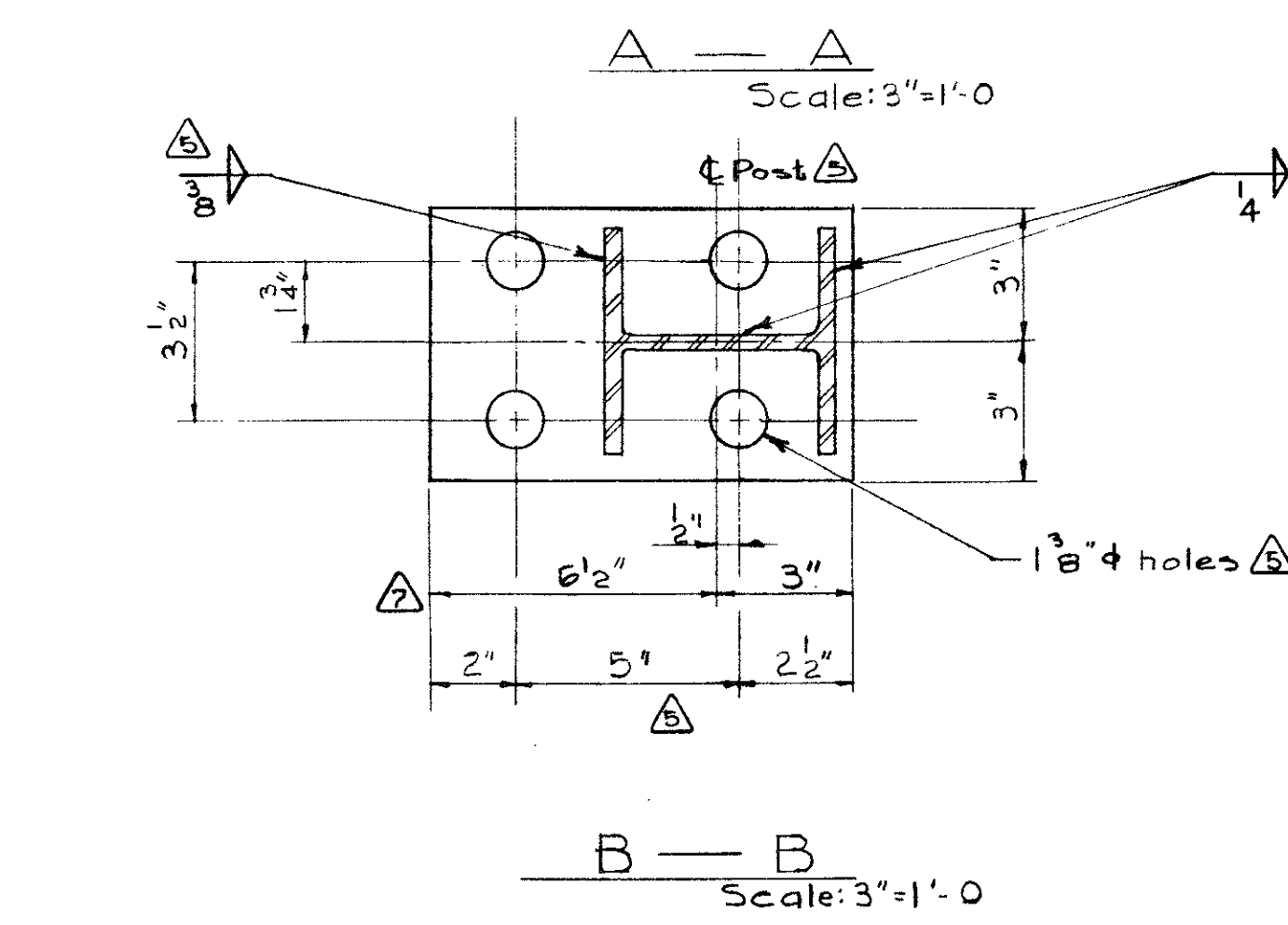


DESIGNED BY _____ DATE _____ 19____
 DETAILED BY C.D. Audley DATE Feb. 10 1967
 CHECKED BY _____ DATE _____ 19____



TYPE A
 TYPE B - Same as above except 2'-0" bolts are straight.
 POST ANCHOR BOLTS
 Scale: 1/2" = 1'-0"



GENERAL NOTES

- All handrail and posts to be given one shop coat of red lead, iron oxide, oil alkylid. type paint conforming to the Canadian Government Specification Board: Specification 1-GP-140-B, & having a minimum dry thickness of 15 mils and a maximum dry thickness of 25 mils.
- All steel shall conform to the current A.S.T.M. Specification A36.
- Fabrication is to be in accordance with Bridge Branch Specification B187-64.
- The fabricator shall submit shop drawings and they shall be approved by the Department before fabrication is started. The checking of shop drawings is to be considered as assisting the fabricator and shall not relieve him of responsibility for error or omissions.
- All shop splices are to be shown on the shop drawings.
- Anchor bolt assemblies shall be hot dip galvanized after fabrication, in accordance with A.S.T.M. Specification A153.
- Before shop painting, all structural steel components shall be blast cleaned in accordance with Specification No. SSPC-SP6-52T. Painting shall not commence until approval of the clearing has been obtained from the Engineer.

Redrawn from S-752

SUPERSEDED BY S-986-69

NO.	DATE	DESCRIPTION	BY
1	Nov. 29/68	Dimensions	J.R.C.
2	March 22/68	Base Plate Dimensions	F.B.
3	Jan 10/68	Note added	V.B.
4	Sept. 27/67	Weld Symbols	T.B.
5	Sept. 1/67	Anchor Bolt Note	R.L.F.
6	Aug. 30/67	End post overhang dimension	R.K.
7	July 19, 1967	Revision General Notes	W.R.H.
8	July 7/67	General Revision	D.A.

2'-9 HIGHWAY
 VERTICAL BAR TYPE
 HANDRAIL DETAIL

GOVERNMENT OF THE PROVINCE OF ALBERTA
 DEPARTMENT OF HIGHWAYS
 BRIDGE BRANCH, EDMONTON

FILE NO. _____ HWY. NO. _____ DWG. NO. S-917
 LOCATION SCALE as shown
 STREAM SHEET OF