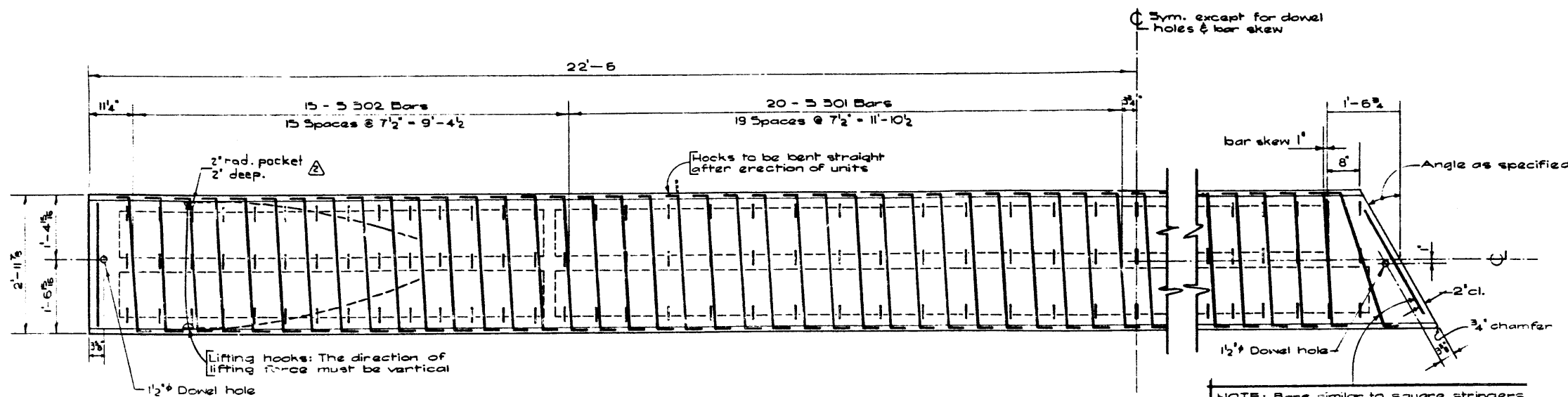


BAR LIST

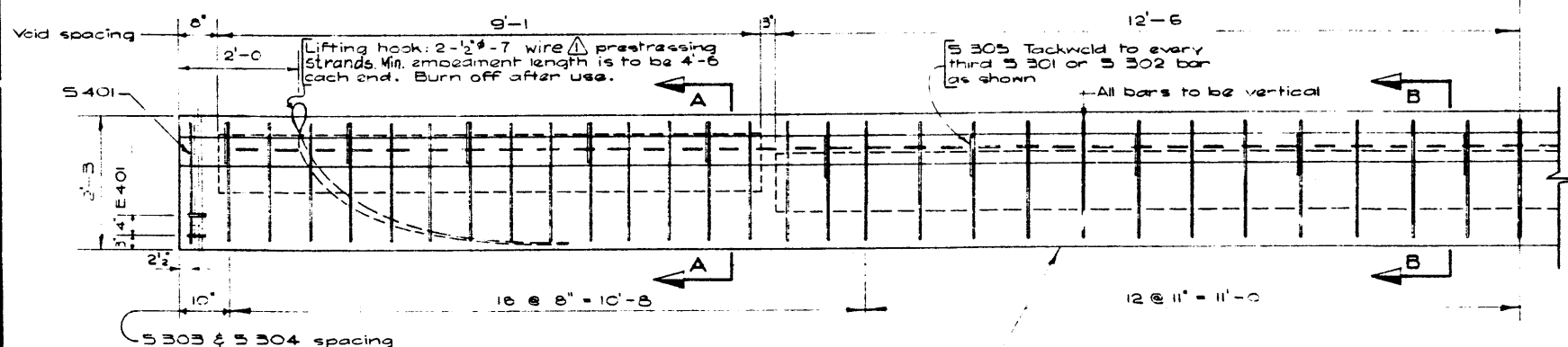
Mark	Size	No.	Type	Length	Weight
S301	3	40	A	3'-5"	51
S302	3	30	B	3'-8"	41
S303	3	57	C	7'-4"	157
S304	3	57	D	2'-10"	61
S305	3	20	E	3'-10"	29
S401	4	2	F	9'-10"	13
E401	4	4	G	3'-8"	10
E402	4	4	H	5'-6"	15
Total lbs.:					577



PLAN
Scale: 3/4" = 1'-0"

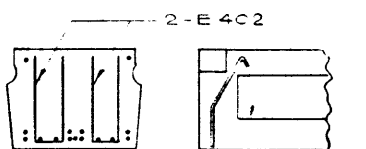
NOTE: Bars similar to square stringers but length & placing to suit skew.

SKewed END STEEL

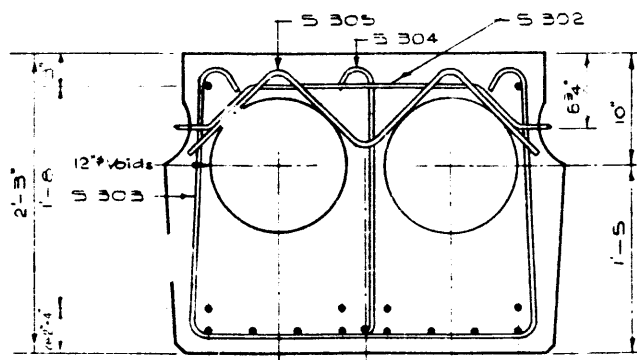


ELEVATION
Scale: 3/4" = 1'-0"

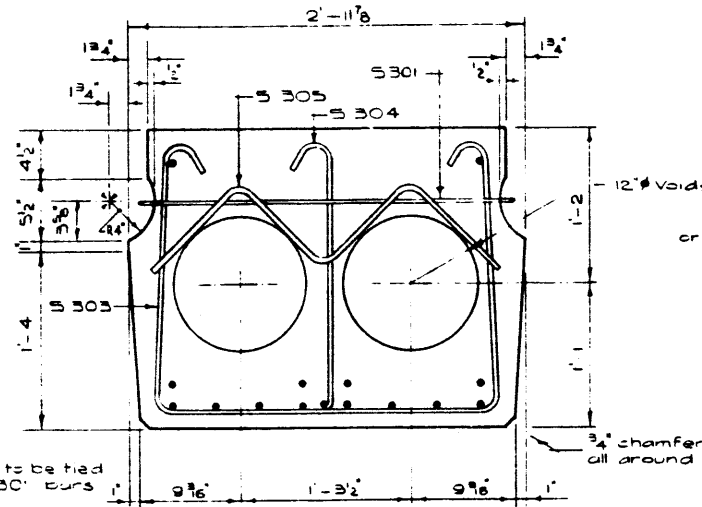
Fabricators name, year of manufacture & serial no. of unit to be cast into bottom of slab in 2" letters.



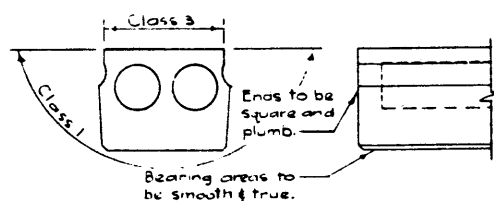
ADDITIONAL END BARS
Scale: 1/2" = 1'-0"



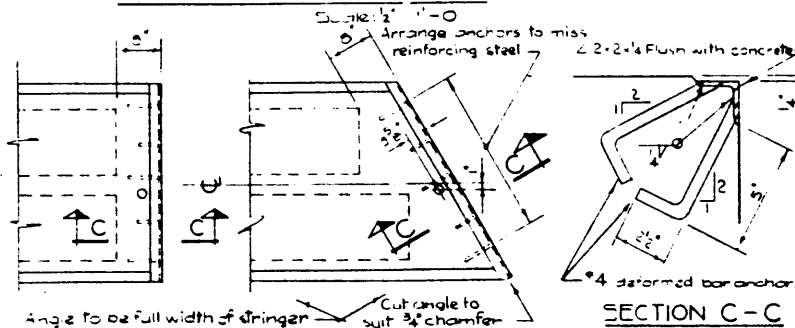
SECTION A-A
Scale: 1/2" = 1'-0"



SECTION B-B
Scale: 1/2" = 1'-0"



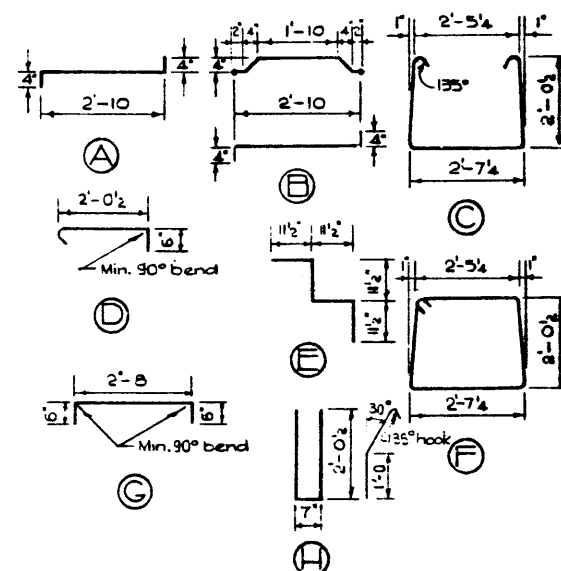
STRINGER FINISHES



PROTECTION ANGLE
Provide when called for. Scale: 3/4" = 1'-0"

SECTION C-C
Scale: 3" = 1'-0"

BAR TYPES N.T.S.
(All bar dimensions are out to out)



GENERAL NOTES

- DESIGN:** A.S.T.M. 1961 Specifications. Loading: 3/5 of one wheel line of an H-20-44 truck plus full dead load plus 2" wearing surface.
- MATERIALS:** Concrete shall be of standard weight aggregate with a maximum size of 3/4". Minimum compressive strength shall be 5000 p.s.i. at 28 days. Air entrainment to be not less than 5%.
- FABRICATION:** Reinforcement: Diameters of all bars shall conform to the recommended sizes and all hooks, unless otherwise noted, shall conform to the recommended sizes detailed in the A.C.I. Manual of Standard Practice for Detailing Reinforced Concrete Structures. Prestranding steel: Initial tensioning load = 25.2 k/Cable. Design load = 20.18 k/Cable. Concrete must attain 4,000 p.s.i. compressive strength before the prestranding force is transferred. Units are to conform to the requirements of the Bridge Branch Specifications for Prestressed Concrete Bridge Units.
- ERECTION:** Lifting force at each hook must be vertical at all times. Stringer surface must be level at all times.

PRESTRESSED CONCRETE
45 FT. SPAN
27" TYPE "M" STRINGER

GOVERNMENT OF THE PROVINCE OF ALBERTA
DEPARTMENT OF HIGHWAYS
BRIDGE BRANCH, EDMONTON

FILE NO. _____ HWY. NO. _____ SWS. NO. _____
LOCATION SCALE AS SHOWN SHEET OF 5-92E

NO.	DATE	DESCRIPTION	BY
1	Feb. 10/69	Lifting hook	L.K.
2	March 25/69	Prestranding strands	R.CH.
REVISIONS			

DESIGNED BY W.J. Hamilton DATE March 19 1967
CHECKED BY E.W. Budd DATE April 18 1967