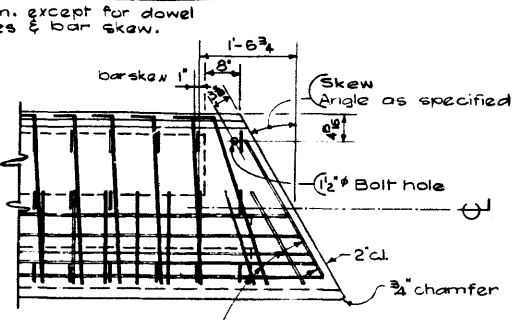
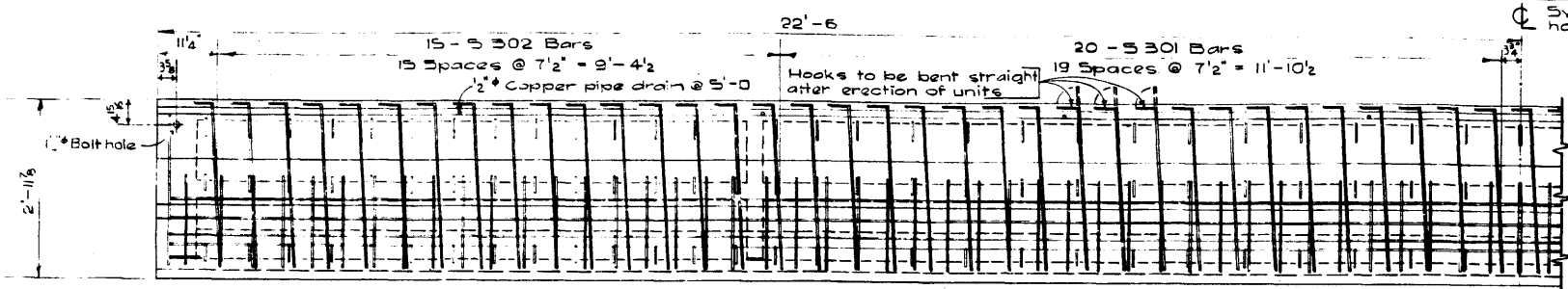
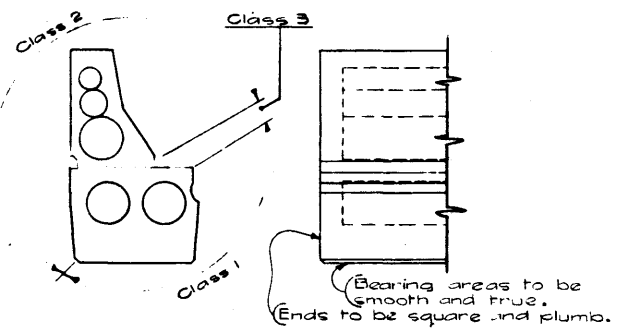
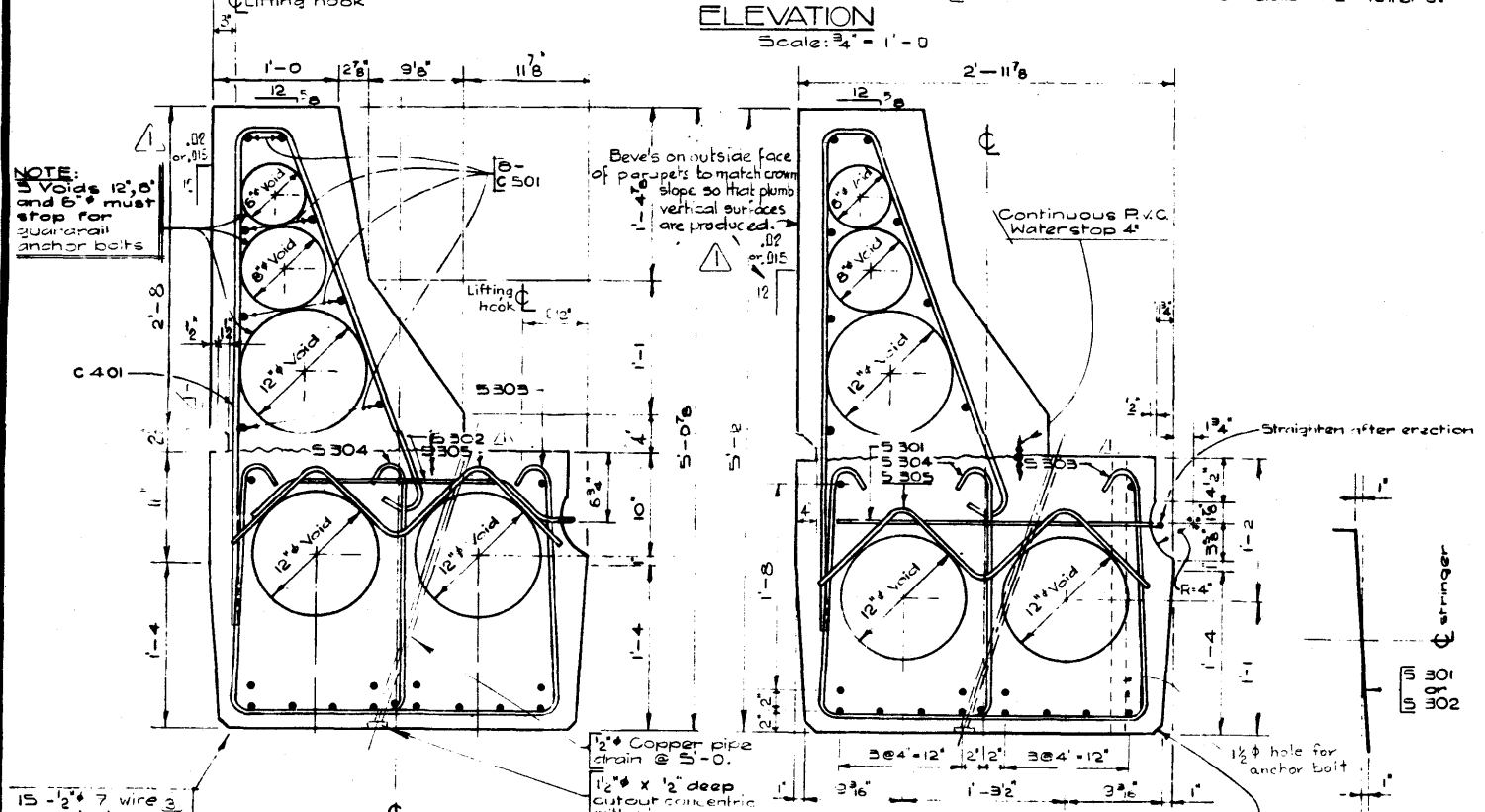
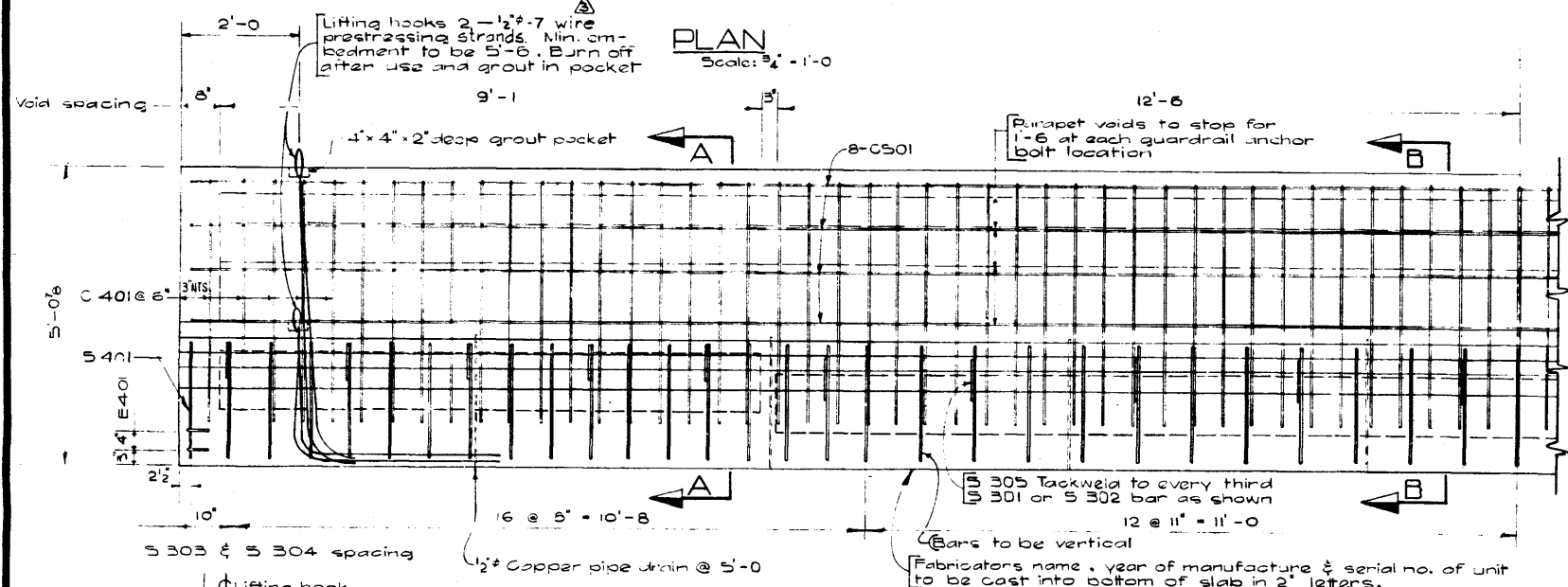


DESIGNED BY W.J. Hamilton DATE March 19 67
 CHECKED BY E.W. Buda DATE April 19 67

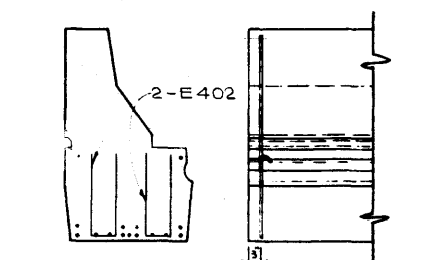


NOTE: Bars similar to square stringers but length & placing to suit skew
SKewed END STEEL
 N.T.S.

BAR LIST					
Mark	Size	No.	Type	Length	Weight
S 301	3	40	A	3'-0	45
S 302	3	30	B	3'-3	37
S 303	3	37	C	7'-4	157
S 304	3	37	D	2'-10	61
S 305	3	20	E	3'-10	29
S 401	4	2	F	9'-10	13
E 401	4	4	G	3'-8	10
E 402	4	4	H	5'-6	15
C 401	4	90	J	8'-1	486
C 501	5	16	str.	23'-3	388
				Total lbs:	1187
				Δ lbs	1241

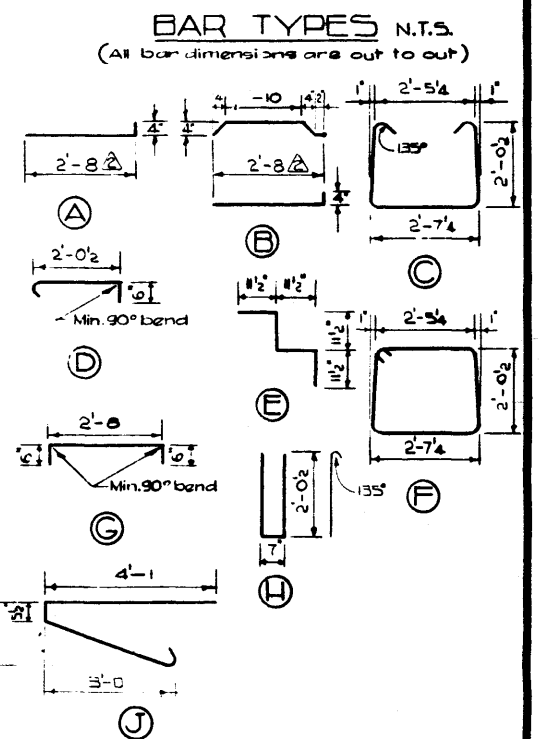


STRINGER FINISHES
 Scale: 1/2" = 1'-0"



ADDITIONAL END BARS
 Scale: 1/2" = 1'-0"

BAR SKEW
 Scale: 1" = 1'-0"



GENERAL NOTES

DESIGN A.A.S.H.O. 1961 Specifications
 Loading: 3/5 of one wheel line of an HS 20-44 truck plus full dead load plus 2" wearing surface.

MATERIALS Concrete shall be of standard weight aggregate with a maximum size of 3/4". Minimum compressive strength shall be 5000 p.s.i. at 28 days. Air entrainment to be not less than 5%.

FABRICATION Reinforcement: Diameters of all bends shall conform to the recommended sizes and all hooks, unless otherwise noted, shall conform to the recommended sizes detailed in the A.C.I. Manual of Standard Practice for Detailing Reinforced Concrete Structures.
 Prestressing steel: Initial tensioning load = 25.2 k/Cable
 Design load = 20.16 k/Cable
 Concrete must attain 4,000 p.s.i. compressive strength before the prestressing force is transferred. Units are to conform to the requirements of the Bridge Branch Specifications for Prestressed Concrete Bridge Units.

ERECTION Lifting force at each hook must be vertical at all times. Stringer surface must be level at all times.

PRESTRESSED CONCRETE
 45 FT. SPAN
 27" TYPE "M" CURB STRINGER

GOVERNMENT OF THE PROVINCE OF ALBERTA
 DEPARTMENT OF HIGHWAYS
 BRIDGE BRANCH, EDMONTON

FILE NO. _____ HWY. NO. _____ BRIDGE NO. _____
 LOCATION _____ SCALE OF SHEET _____ SHEET 7 OF 12
 5-927

NO.	DATE	DESCRIPTION	BY
1	March 25/66	Prestressing strands	R.Ch.
2	Feb 21/69	Bar length	R.Ch.
3	Dec 4/66	Parapet bevel added. Flange lip removed.	P.S.