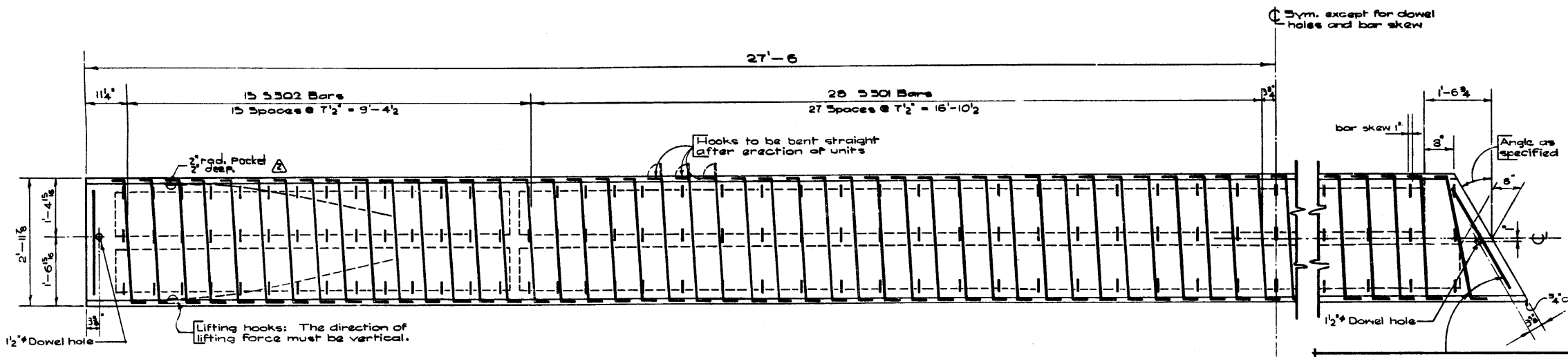
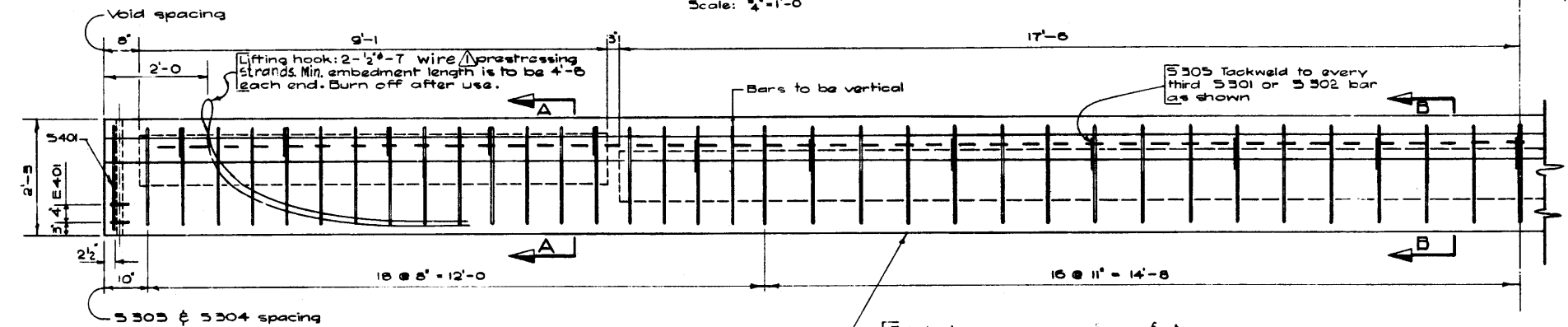


BAR LIST

Mark	Size	No.	Type	Length	Weight
S301	3	56	A	3'-5"	72
S302	3	30	B	3'-8"	41
S303	3	69	C	7'-4"	190
S304	3	69	D	2'-10"	74
S305	3	23	E	3'-10"	33
S401	4	2	F	9'-10"	13
E401	4	4	G	3'-8"	10
E501	5	4	H	5'-6"	23
Total lbs:					456



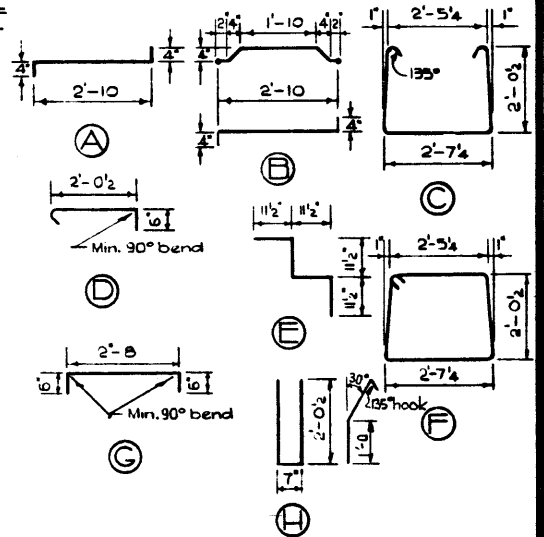
PLAN
Scale: 3/4" = 1'-0"



ELEVATION
Scale: 3/4" = 1'-0"

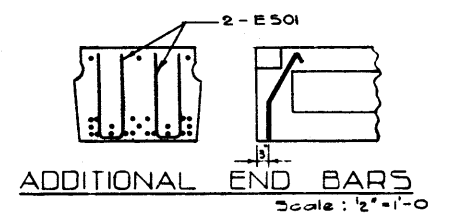
SKewed END STEEL
Scale: N.T.S.
NOTE: Bars similar to square stringer but length and placing to suit skew

BAR TYPES N.T.S.
(All bar dimensions are out to out)

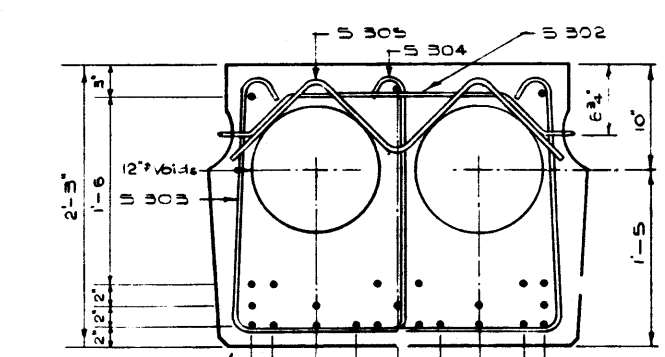


GENERAL NOTES

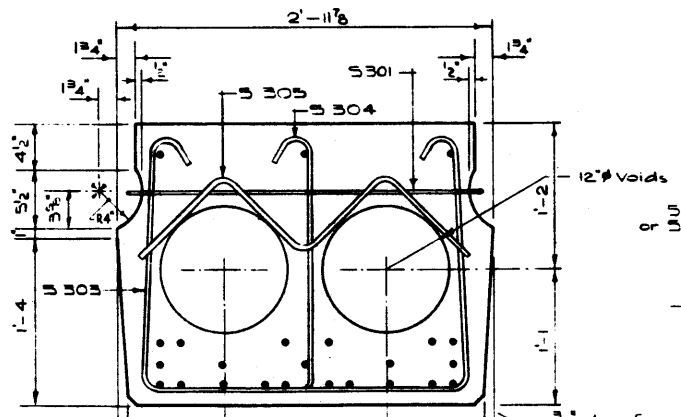
- DESIGN:** A.A.S.H.O. 1961 Specifications Loading: 3/5 of one steel line of an HS 20-44 truck plus full dead load plus 2" wearing surface.
- MATERIALS:** Concrete shall be of standard weight aggregate with a maximum size of 3/4". Minimum compressive strength shall be 5000 p.s.i. at 28 days. Air entrainment to be not less than 5%.
- FABRICATION:** Reinforcement: Diameters of all bends shall conform to the recommended sizes and all hooks, unless otherwise noted, shall conform to the recommended sizes detailed in the A.C.I. Manual of Standard Practice for Detailing Reinforced Concrete Structures. Prestressing steel: Initial tensioning load = 25.2 k/Cable Design load = 20.16 k/Cable Concrete must attain 4,000 p.s.i. compressive strength before the prestressing force is transferred. Units are to conform to the requirements of the Bridge Branch Specifications for Prestressed Concrete Bridge Units.
- ERECTOR:** Lifting force at each hook must be vertical at all times. Stringer surface must be level at all times.



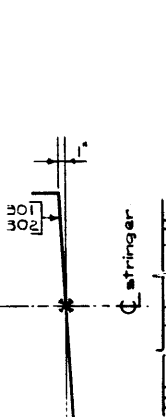
ADDITIONAL END BARS
Scale: 1/2" = 1'-0"



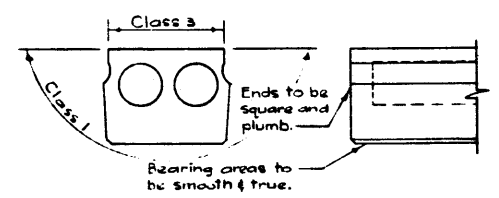
SECTION A-A
Scale: 1/2" = 1'-0"



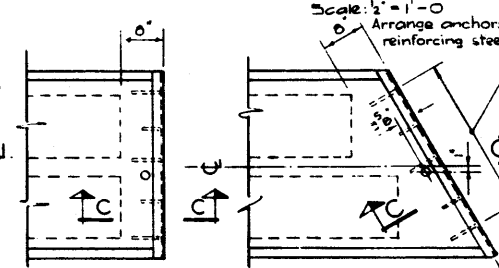
SECTION B-B
Scale: 1/2" = 1'-0"



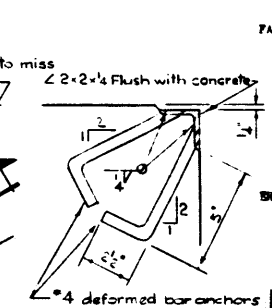
BAR SKEW
Scale: 1" = 1'-0"



STRINGER FINISHES
Scale: 1/2" = 1'-0"



PROTECTION ANGLE
Provide when called for. Scale: 3/4" = 1'-0"



SECTION C-C
Scale: 3" = 1'-0"

DESIGNED BY W. J. Hamilton
 DATE March 19 67
 CHECKED BY E. W. Buda
 DATE April 19 67

NO.	DATE	DESCRIPTION	BY
1	Feb. 10/67	Lifting hook	L.K.
2	March 21/67	Prestressing strands	R.Ch.

PRESTRESSED CONCRETE
55 FT. SPAN
27" TYPE "M" STRINGER

GOVERNMENT OF THE PROVINCE OF ALBERTA
DEPARTMENT OF HIGHWAYS
BRIDGE BRANCH, EDMONTON

FILE NO. _____ HWY. NO. _____ DRAW. NO. _____
 LOCATION _____ SCALE 25' SHOWN 5-928
 SHEET _____ OF _____